



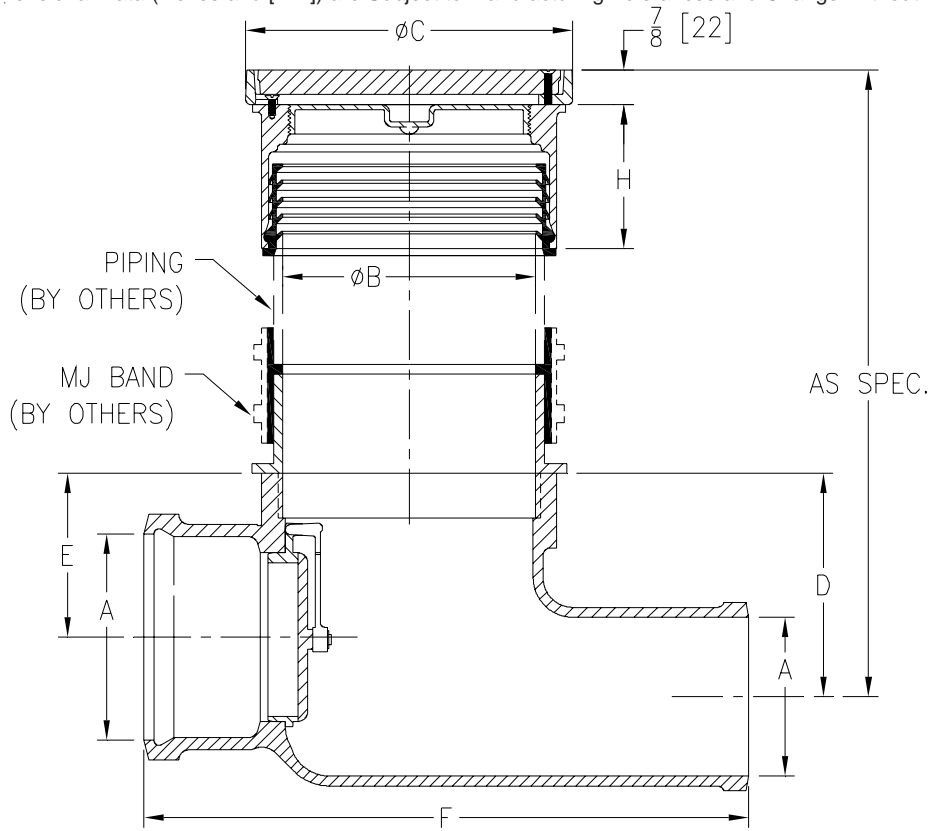
**Z1095-15  
BACKWATER VALVE  
W/FLOOR LEVEL CLEANOUT**

**SPECIFICATION SHEET**

**TAG** \_\_\_\_\_



Dimensional Data (inches and [mm]) are Subject to Manufacturing Tolerances and Change Without Notice



Dimensions In Inches							Approx. Wt. Lbs. [kg]
Pipe Size		C	D	E	F	H	
A	B						
2 [51]	6 [152]	8 1/4 [210]	4 5/16 [110]	2 13/16 [71]	12 [305]	2 3/4 [70]	33 [15]
3 [76]	6 [152]	8 1/4 [210]	5 1/8 [130]	3 5/8 [92]	14 [356]	3 5/8 [92]	45 [20]
4 [102]	6 [152]	8 1/4 [210]	5 5/8 [143]	4 1/8 [105]	15 1/4 [387]	3 5/8 [92]	51 [23]
6 [152]	6 [152]	8 1/4 [210]	7 [178]	5 1/2 [140]	17 3/4 [451]	3 5/8 [92]	79 [36]

**ENGINEERING SPECIFICATION:** ZURN Z1095-15 Backwater Valve, Dura-Coated cast iron body, hub inlet and offset spigot outlet, automatic PVC (3 [76] and 4 [102] only) flapper type backwater valve with o-ring, complete with non-adjustable floor cleanout with Dura-Coated cast iron body, gas and watertight ABS tapered thread plug and round scoriated secured cover and frame.

**CONNECTIONS** (Check/specify appropriate options)

**PIPE SIZE**

2, 3, 4, 6 [51, 76, 102, 152]

(Specify size) **CONNECTION**

\_\_\_\_\_ HB X SP    Hub x Spigot

**PREFIXES**

\_\_\_\_\_ Z    D.C.C.I. Body\*  
\_\_\_\_\_ ZN    D.C.C.I. Body with Polished Nickel Bronze Top (Deduct 1/2 [13] from 7/8 [22] dim.)

**SUFFIXES**

\_\_\_\_\_ -BC    Bolted Cover  
\_\_\_\_\_ -BP    Bronze Plug  
\_\_\_\_\_ -BV    Bronze Flapper Valve (3 [76] and 4 [102] Sizes)  
\_\_\_\_\_ -G    Galvanized Cast Iron  
\_\_\_\_\_ -X    Round Top Recessed for 1/8 [3] Tile (ZN only)

\*REGULARLY FURNISHED UNLESS OTHERWISE SPECIFIED

**REV. B    DATE: 2/1/06    C.N. NO. 94631**

**DWG. NO. 63655    PRODUCT NO. Z1095-15**