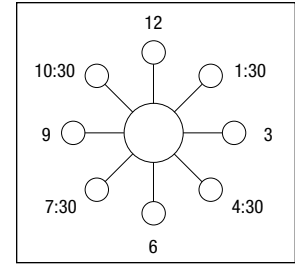
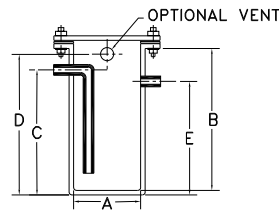


## Z9A-NT NEUTRALIZATION TANK

### Engineering Specification:

ZURN Z9A-NT NEUTRALIZATION TANK – \_\_\_\_\_ gallon capacity, having \_\_\_\_\_ inlet, outlet and \_\_\_\_\_ inch vent connections with seamless construction is manufactured from a high-density polyethylene. The top is complete with gasketed, bolt-down cover.



**Important:** Tank connection must be mechanical joint or threaded connection; **cannot be fusion.**

**Tanks are non-cancelable and non-returnable, NFA.**

Specify Inlet (I), Outlet (O), and Vent (V) if applicable.

Model No.	Dimensions in Inches [mm]							
	Std. Inlet/Outlet	Outlet Type	Vent	A	B	C	D	E
Z9A-NT-05	2 [51]	Plain End	2 [51]	11 [279]	14 [356]	11 [279]	12 [305]	8 [203]
Z9A-NT-15	2 [51]	Plain End	2 [51]	18 [457]	15 [381]	11 [279]	12 [305]	8 [203]
Z9A-NT-30	3 [76]	Plain End	2 [51]	18 [457]	29 [737]	23 [584]	25 [635]	19 [483]
Z9A-NT-55	3 [76]	Plain End	2 [51]	22 [559]	36 [914]	27 [686]	31 [787]	23 [584]
Z9A-NT-100	4 [102]	Plain End	3 [76]	28 [711]	42 [1067]	35 [889]	37 [940]	31 [787]
Z9A-NT-150	4 [102]	Plain End	3 [76]	31 [787]	48 [1219]	38 [965]	42 [1067]	34 [864]
Z9A-NT-175	4 [102]	Plain End	3 [76]	30 [762]	57 [1448]	49-1/2 [1257]	53-1/2 [1359]	46-1/2 [1181]
Z9A-NT-200	4 [102]	Plain End	3 [76]	36 [914]	48 [1219]	38 [965]	42 [1067]	34 [864]
Z9A-NT-275	4 [102]	Plain End	3 [76]	42 [1067]	48 [1219]	38 [965]	42 [1067]	34 [864]
Z9A-NT-350	4 [102]	Plain End	3 [76]	48 [1219]	48 [1219]	38 [965]	42 [1067]	34 [864]
Z9A-NT-500	4 [102]	Plain End	3 [76]	52 [1321]	60 [1524]	52 [1321]	54 [1372]	46 [1168]
Z9A-NT-1200	4 [102]	Plain End	3 [76]	69 [1753]	84 [2134]	74 [1880]	78 [1981]	68 [1727]

**Note:** Unless otherwise specified, all tanks will be supplied with above sized inlet, outlet and vent. If your installation requires a variation in size, contact your Representative for pricing. Please specify the location of your inlet, outlet and vent connections.

Options	Description
Z9-MAC-24	24" x 24" [610 x 610] Manhole Access Cover – Use with NT-05
Z9-MAC-30	30" x 30" [762 x 762] Manhole Access Cover – Use with NT-15 to NT-30
Z9-MAC-36	36" x 36" [914 x 914] Manhole Access Cover – Use with NT-55
Z9-MAC-42	42" x 42" [1067 x 1067] Manhole Access Cover – Use with NT-100 to NT-175
Z9-MAC-48	48" x 48" [1219 x 1219] Manhole Access Cover – Use with NT-200 to NT-300
Z9-MAC-54	54" x 54" [1372 x 1372] Manhole Access Cover – Use with NT-275
Z9-MAC-60	60" x 60" [1524 x 1524] Manhole Access Cover – Use with NT-350, NT-550, NT-650
Z9-LIME-CHIPS	50 lb. [23 kg] bag Standard Limestone Chips (See previous page for proper quantity.)

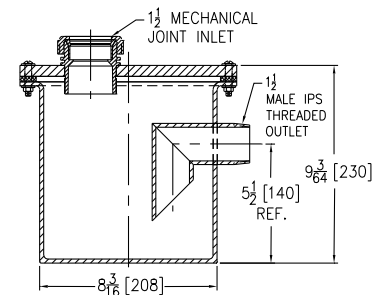
**Note:** pH monitoring system is available upon request. Contact local Zurn representative for further information.

## Z9A-DT 1.5 GALLON DILUTION TANK

### Engineering Specification:

ZURN Z9A-DT 1.5 GALLON DILUTION TANK – Removable, bolted gasket cover. Tank is constructed of high-density polyethylene.

**Note:** Neutralization tanks and dilution traps are non-cancelable and non-returnable.



Model No.	Dimensions in Inches [mm]	
	Inlet	Outlet
Z9A-DT1-112	1-1/2 [38]	1-1/2 [38]
Z9A-DT1-2	2 [51]	2 [51]