

## MODELS

Z5654, Z5655, Z5665, Z5675 Series

## FLOOR MOUNTED BOTTOM OUTLET WATER CLOSET INSTALLATION INSTRUCTIONS



### RECOMMENDED INSTALLATION TOOLS AND SUPPLIES

- |                       |                     |                        |
|-----------------------|---------------------|------------------------|
| • Large Sponge        | • Hacksaw           | • Ink Marker or Pencil |
| • Basin or Bucket     | • Setting Compound  | • Drop Cloth           |
| • Screwdriver         | • Tape Measure      | • Level                |
| • Scraper/Putty Knife | • Adjustable Wrench | • Wax Ring Gasket      |

### STEP 1 - REMOVE OLD TOILET (FOR RETROFIT ONLY)

1. Turn off the water supply, then flush. Use a sponge & basin to soak up any water left in the bowl.
2. Disconnect the flush valve.
3. Pry off the bolt caps, remove nuts that secure the toilet to the floor. Use a rocking motion to remove the old toilet from the floor.
4. Scrape the old wax gasket from the floor flange.

### STEP 2 - DETERMINE T-BOLT LENGTH & INSTALL T-BOLTS

1. TEMPORARILY install flange T-bolts, set toilet on floor, and place discs and nuts onto bolts.
2. Mark bolt length needed for bolt cap clearance.
3. Remove bolts from toilet and cut the bolts to length with hacksaw.
4. Install the two pre-cut T-bolts in the floor flange.

### STEP 3 - INSTALL NEW WAX RING GASKET

1. Carefully turn the toilet bowl onto dropcloth to protect the finish. Place a new wax gasket on toilet outlet.
2. A bead of setting compound may be applied to the base/foot if desired.

### STEP 4 - SET THE BOWL

**WARNING: Breaking or chipping of china may result in physical injury.**

1. Carefully lower toilet so the T-bolts will protrude through holes in bowl base (Two-person handling is recommended to prevent injury).
2. Apply full body weight to rim of bowl for proper gasket seal.
3. Place discs (bevel side up) and nuts onto T-bolts and tighten nuts. **DO NOT OVERTIGHTEN** as it may result in breaking or chipping of china.
4. Press bolt caps onto discs.

### STEP 5 - INSTALL FLUSH VALVE AND TOILET SEAT

1. Install manual or sensor flush valve onto spud according to the manufacturer's instructions.
2. Install toilet seat to the toilet bowl using included mounting bolts. If using an extra heavy duty plastic seat, install with the self-sustaining feature and check hinges to avoid damage to the rim of the bowl from slamming of seat onto china.

### CARE AND CLEANING INSTRUCTIONS

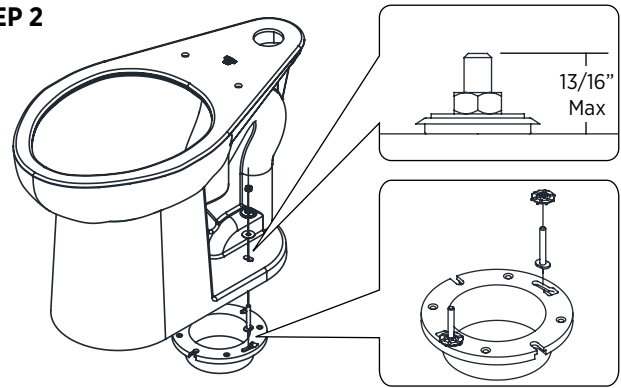
Zurn's vitreous china products are finished with a glaze that is nonporous, acid-resistant, scratch-resistant and sanitary. The glossy luster will last for years without discoloring, fading, or staining if the proper cleaning methods described below are followed.

**Bowl:** Use TOILET BOWL CLEANERS THAT ARE APPLIED TO THE TOILET BOWL and a nylon brush when necessary. Use of a metal brush will create metal marks in the bowl. To remove metal marks in the bowl, we recommend a household cleaner which contains oxalic acid, such as BarKeeper's Friend® or Zud® and a nylon brush.

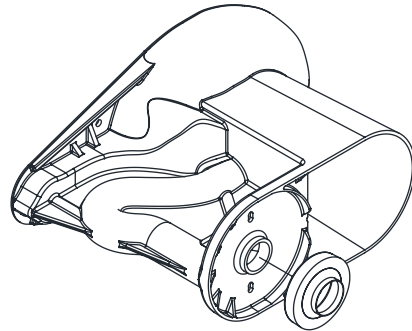
**China Surface Areas:** Everyday cleaning of Zurn china products may be accomplished by using an antibacterial liquid dishwashing soap and water. Rinse thoroughly with plenty of water and dry the fixture. To remove lime build-up, KRC-7® liquid cleaner may be used. Read and follow all label directions.

**Toilet Seat:** Some of the newer detergents and household bathroom cleansers have a damaging affect on seat materials. We suggest that to keep your toilet seat sparkling clean and new-looking, use only mild soap and water for cleaning. Thoroughly rinse the cleaned surface with plenty of water and then dry the surface. Cleaners containing silica or sand will be abrasive and should not be used.

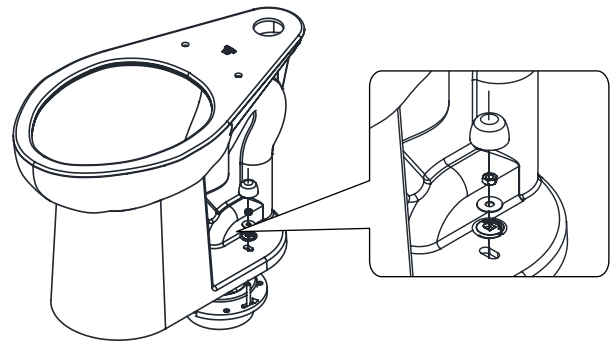
### STEP 2



### STEP 3



### STEP 4



### STEP 5

