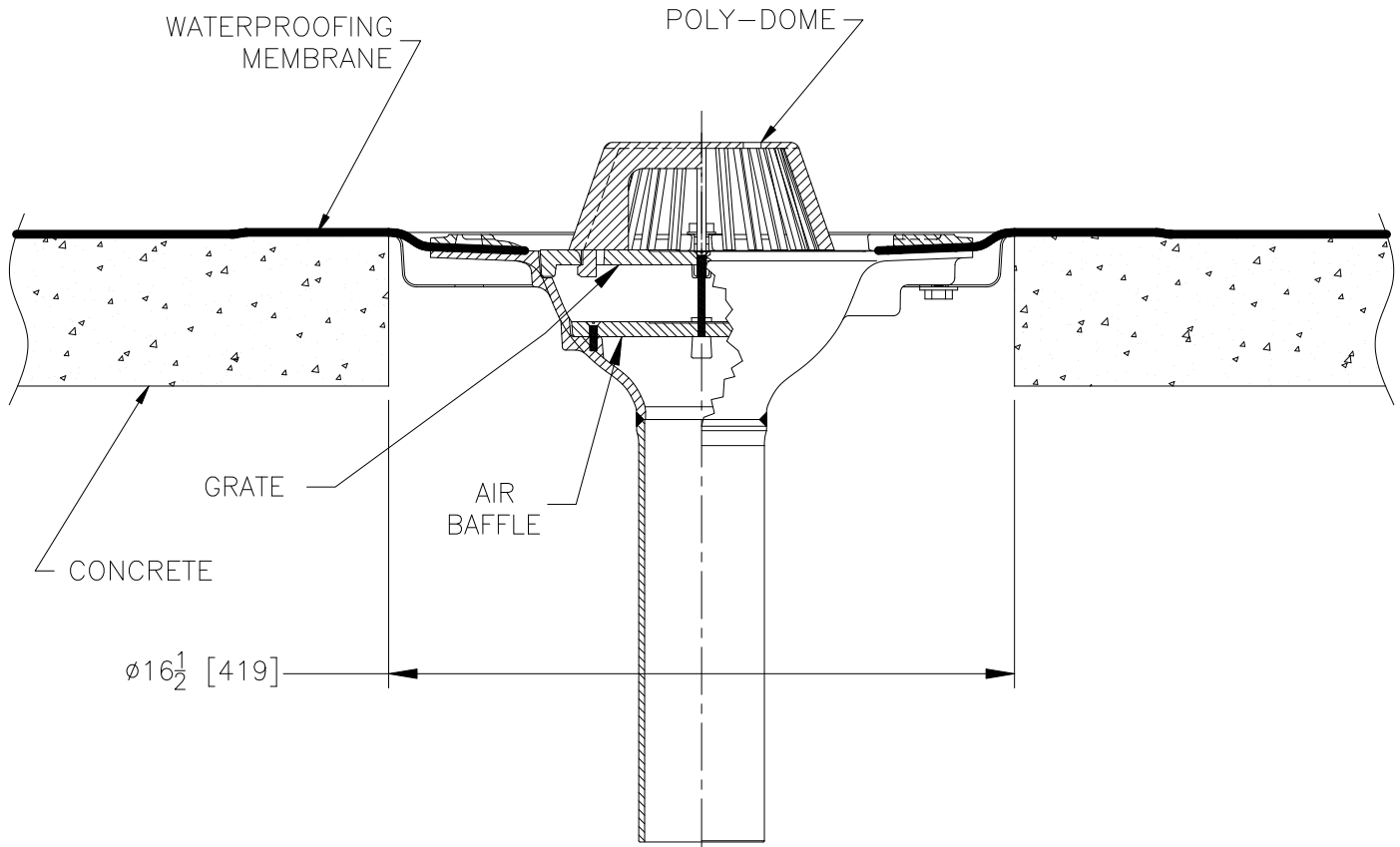




Z130

TYPICAL INSTALLATION FOR SIPHONIC ROOF DRAIN

Dimensional Data (inches and [mm]) are Subject to Manufacturing Tolerances and Change Without Notice



Z130

CONCRETE DECK WITH WATERPROOFING MEMBRANE

Siphonic roof drain is typically installed in a precast concrete deck with a liquid or sheet applied waterproofing membrane. Drain is illustrated with a Top-set Deck Plate, which should be secured to the concrete deck through slots in the plate, using Tapcons or other suitable fasteners. Securing the drain to the deck prevents movement that could damage the membrane. Dome may be removed, as the siphonic drain will flush most debris through the system due to its high velocity flow. Grate should be cleared of any excess roofing material prior to initial use. Failure to do so may result in excessive water buildup due to restriction of flow.

⚠ **WARNING:** Cancer and Reproductive Harm - www.P65Warnings.ca.gov

⚠ **ADVERTENCIA:** Cáncer y daño reproductivo - www.P65Warnings.ca.gov

⚠ **AVERTISSEMENT:** Cancer et effets néfastes sur la reproduction - www.P65Warnings.ca.gov

Zurn Industries, LLC | Specification Drainage Operation
1801 Pittsburgh Avenue, Erie, PA U.S.A. 16502 · Ph. 855-663-9876, Fax 814-454-7929
In Canada | Zurn Industries Limited
3544 Nashua Drive, Mississauga, Ontario L4V 1L2 · Ph. 905-405-8272, Fax 905-405-1292
www.zurn.com

Rev. A
Date: 6/4/2018
C.N. No. 140093
Prod. | Form. No. RD104