



# Z886

## PERMA TRENCH TEE FABRICATION INSTRUCTIONS

Dimensional data (inches and [mm]) are subject to manufacturing tolerances and change without notice.

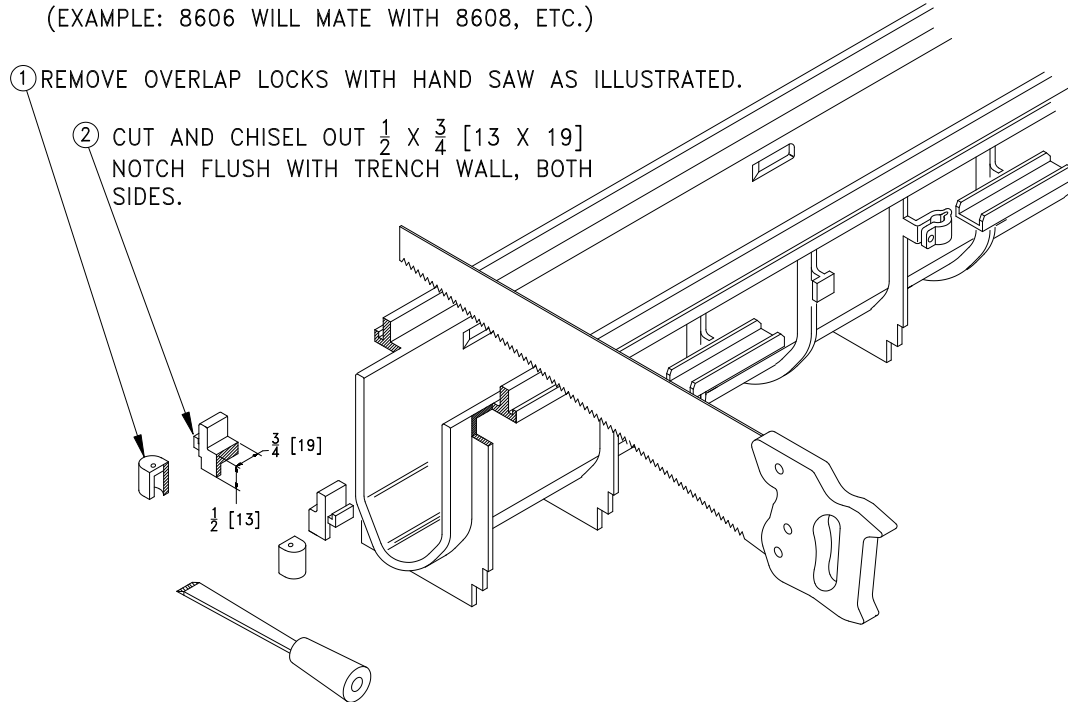
**NOTE:**

INCOMING TRENCH MUST BE AT LEAST 2 TRENCH SECTION SHALLOWER THAN MATING TRENCH.

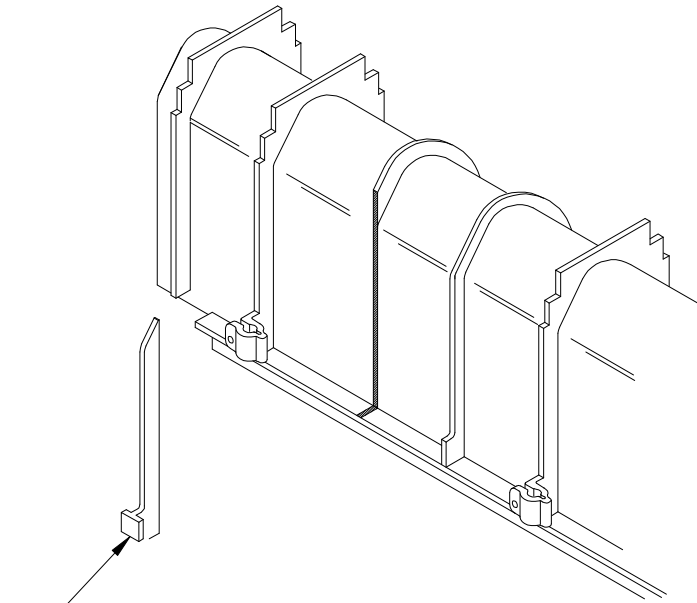
(EXAMPLE: 8606 WILL MATE WITH 8608, ETC.)

① REMOVE OVERLAP LOCKS WITH HAND SAW AS ILLUSTRATED.

② CUT AND CHISEL OUT  $\frac{1}{2} \times \frac{3}{4}$  [13 X 19] NOTCH FLUSH WITH TRENCH WALL, BOTH SIDES.



③ CUT OUT RIBS FLUSH WITH TRENCH WALL WHERE REQUIRED ON INCOMING TRENCH.



**⚠ WARNING:** Cancer and Reproductive Harm - [www.P65Warnings.ca.gov](http://www.P65Warnings.ca.gov)

**⚠ ADVERTENCIA:** Cáncer y daño reproductivo - [www.P65Warnings.ca.gov](http://www.P65Warnings.ca.gov)

**⚠ AVERTISSEMENT:** Cancer et effets néfastes sur la reproduction - [www.P65Warnings.ca.gov](http://www.P65Warnings.ca.gov)

**Zurn Industries, LLC | Light Commercial**

1801 Pittsburgh Avenue, Erie, PA U.S.A. 16502 · Ph. 855-663-9876, Fax 814-454-7929

In Canada | **Zurn Industries Limited**

3544 Nashua Drive, Mississauga, Ontario L4V 1L2 · Ph. 905-405-8272, Fax 905-405-1292

[www.zurn.com](http://www.zurn.com)

Rev. B  
Date: 5/15/2018  
C.N. No. 140024  
Form No. FT288

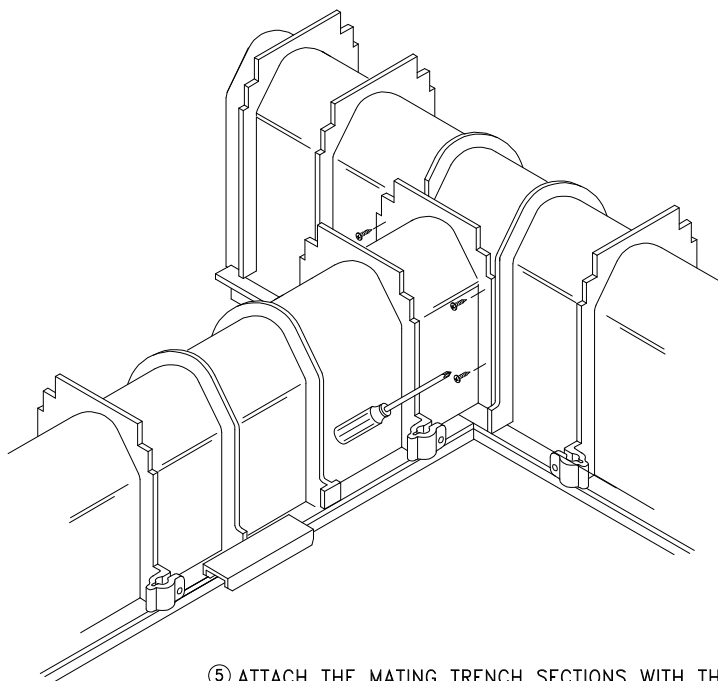
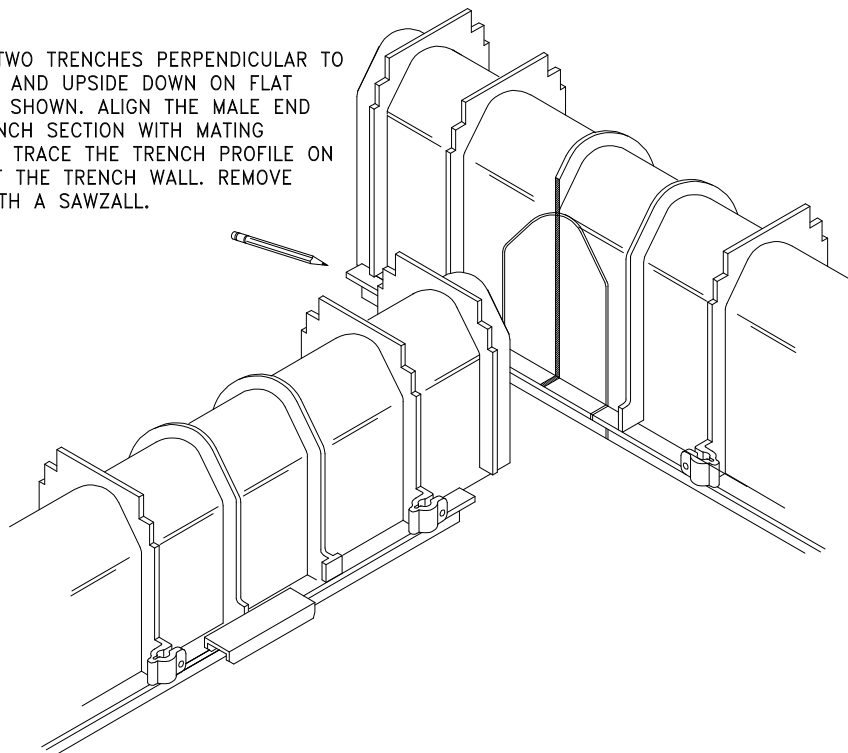


# Z886

## PERMA TRENCH TEE FABRICATION INSTRUCTIONS

Dimensional data (inches and [mm]) are subject to manufacturing tolerances and change without notice.

- ④ PLACE THE TWO TRENCHES PERPENDICULAR TO EACH OTHER AND UPSIDE DOWN ON FLAT SURFACE AS SHOWN. ALIGN THE MALE END OF THE TRENCH SECTION WITH MATING TRENCH AND TRACE THE TRENCH PROFILE ON THE SIDE OF THE TRENCH WALL. REMOVE MATERIAL WITH A SAWZALL.



- ⑤ ATTACH THE MATING TRENCH SECTIONS WITH THE HARDWARE PROVIDED TO COMPLETE THE CONNECTION. SILICONE CAULKING CAN BE USED TO MAKE THE CONNECTION WATER TIGHT.