

Commercial Drainage

COD0425 Customer Guide – CANADA



ZURN.CA US 1.855.ONE.ZURN CANADA 1.877.892.5216



Effective April 15, 2025
Replaces All Previous Price Lists

INTRODUCTION

UPDATE NOTIFICATION	2
TABLE OF CONTENTS - BY SECTION	2

UPDATE NOTIFICATION

We updated and renamed our Light Commercial Customer Guide (ZMKTG230-01). Please reference the Commercial Drainage Customer Guide (230-001) for the latest product line and information.

TABLE OF CONTENTS - BY SECTION

EZ1™

EZ-5 5" TOP ASSEMBLY ADJUSTABLE ON GRADE FLOOR DRAIN WITH EZ1™ TECHNOLOGY	6
EZ-6 6" TOP ASSEMBLY ADJUSTABLE ON GRADE FLOOR DRAIN WITH EZ1™ TECHNOLOGY	7
EZ1™ 5" TOP ASSEMBLY ADJUSTABLE FLOOR DRAIN WITH EZ1 TECHNOLOGY	8
EZ1-6 6" TOP ASSEMBLY ADJUSTABLE FLOOR DRAIN WITH DECK PLATE AND EZ1™ TECHNOLOGY	9
EZ2 5" TOP ASSEMBLY ADJUSTABLE FLOOR DRAIN WITH DECK PLATE AND EZ1™ TECHNOLOGY	10
EZC 5" TOP ASSEMBLY ADJUSTABLE FLOOR CLEANOUT WITH EZ1™ TECHNOLOGY	11
EZC-6 6" TOP ASSEMBLY ADJUSTABLE FLOOR CLEANOUT WITH EZ1™ TECHNOLOGY	12
EZC2 5" TOP ASSEMBLY ADJUSTABLE FLOOR CLEANOUT WITH DECK PLATE AND EZ1™ TECHNOLOGY	13
FD2 5" TOP ASSEMBLY ADJUSTABLE FLOOR DRAIN WITH DECK PLATE	14
CO2 5" TOP ASSEMBLY ADJUSTABLE FLOOR CLEANOUT WITH DECK PLATE	15

FLOOR DRAINS

FD 3" X 4" ADJUSTABLE FLOOR DRAIN	18
FD1 ROUND TOPS	19
FD1 SQUARE TOPS	20
FD2 5" TOP ASSEMBLY ADJUSTABLE FLOOR DRAIN WITH DECK PLATE	21
FD2210 ADJUSTABLE FLOOR DRAIN	21
FD2240 WOOD DECK DRAIN CAST IRON NO-HUB CONNECTION	22
FD2283 SQUARE TOP DECORATIVE FLOOR DRAIN	22
FD2330 HEAVY-DUTY ADJUSTABLE FLOOR DRAIN	22
FD2340 MEDIUM-DUTY ADJUSTABLE FLOOR DRAIN	23
FD2350 HEAVY-DUTY FLOOR DRAIN	23
FD2360 LARGE CAPACITY FLOOR DRAIN	24
FD2200 SMALL AREA FLOOR DRAIN PVC OR ABS SOLVENT WELD CONNECTION	24
FD2200-NT SMALL AREA FLOOR DRAIN CAST IRON NO-HUB CONNECTION	25
FD2201 GENERAL PURPOSE FLOOR DRAIN 2" X 3" PVC OR ABS CONNECTION	25
FD2202 GENERAL PURPOSE FLOOR DRAIN 3" X 4" PVC OR ABS CONNECTION	26
FD2220 MEDIUM-DUTY FLOOR DRAIN	26
FD2254 SHOWER DRAIN – ROUND	27
FD2254 SHOWER DRAIN – SQUARE	28

FD2260 SHOWER STALL DRAIN	29
FD2270 SOLVENT WELD SHOWER STALL DRAIN	29
FD2275 PVC OR ABS NO-CAULK SHOWER STALL DRAIN	30
FD2275 BRASS NO-CAULK SHOWER STALL DRAIN	30
FD2380 6" X 6" BELL TRAP DRAIN	31
FD2381 9" X 9" BELL TRAP DRAIN	31
FS8 PVC FLOOR SINK	32
FS12 PVC FLOOR SINK	32
FD2375 12" X 12" A.R.E. FLOOR SINK – 6" SUMP DEPTH	33
FD2376 12" X 12" A.R.E. FLOOR SINK – 8" SUMP DEPTH	33
FD2377 12" X 12" A.R.E. FLOOR SINK – 10" SUMP DEPTH	34
FD2378 8" X 8" A.R.E. FLOOR SINK – 6" SUMP DEPTH	34
JP2210 PVC OR ABS DRAIN ADAPTOR – USED IN FD2208, FD2209, AND FD2210 MODELS	35
JP2211 PVC OR ABS 3" X 4" DRAIN ADAPTOR – USED IN FD2211, FD2212, AND FD2213 MODELS	35
JP2321 LOW-PROFILE CAST IRON DRAIN ADAPTOR WITH CLAMPING COLLAR – USED IN MODELS FD2321	36
JP2322 LOW-PROFILE CAST IRON DRAIN ADAPTOR – USED IN FD2322 MODELS	36

CLEANOUTS

CO 3" X 4" ADJUSTABLE FINISHED AREA CLEANOUT	38
CO1 ADJUSTABLE FLOOR CLEANOUT	39
CO2 5" TOP ASSEMBLY ADJUSTABLE FLOOR CLEANOUT WITH DECK PLATE	40
CO2450 ADJUSTABLE FLOOR CLEANOUT	41
CO2490 CLEANOUT PLUG – ABS OR PVC	41
CO2521 FINISHED AREA FLOOR ACCESS HOUSING	42
CO2530 ROUND ACCESS COVER	42

ROOF DRAINS

RD2120 MAIN AREA ROOF DRAIN – PVC OR ABS	44
RD2130 CAST IRON, COMBINATION ROOF DRAIN AND OVERFLOW	44
RD2150 REPLACEMENT ROOF DRAIN	45
RD2190 UNIVERSAL MEMBRANE CLAMP KIT	45

TABLE OF CONTENTS - BY SECTION

HYDRANTS

Z1320-CXL LEAD-FREE ECOLOTROL® WALL HYDRANT	48
Z1320-CXL-BFP LEAD-FREE ECOLOTROL® WALL HYDRANT	48
Z1321-CXL LEAD-FREE ECOLOTROL® WALL HYDRANT	49
Z1330-C MODERATE CLIMATE ECOLOTROL WALL HYDRANT	49
Z1330-C-BFP MODERATE CLIMATE ECOLOTROL WALL HYDRANT	50
Z1333-C MODERATE CLIMATE ECOLOTROL WALL HYDRANT	50
Z1341XL LEAD-FREE WALL FAUCET	51
Z1341 WALL FAUCET BOX	51
Z1343 LAWN FAUCET	52
Z1344 WALL FAUCET	52
Z1345 WALL FAUCET	53
Z1346 WALL FAUCET	54
Z1348-BFP WALL FAUCET	55
Z1349 NARROW WALL HYDRANT	55
Z1361 ENCASED GROUND HYDRANT	56
Z1391 POST HYDRANT	56
Z1396XL LEAD-FREE YARD HYDRANT	57
Z1399XL-BFP LEAD-FREE BACKFLOW PREVENTER	57
Z1399-HG HYDRANT GUARD	57
Z1399-HGS HYDRANT GUARD STEM	57
Z1399XL-VB VACUUM BREAKER	58
Z1320-CXL/Z1320-CXL-BFP/Z1321-CXL - REPAIR KIT	58
Z1330-C/Z1330-C-BFP/Z1333-C - REPAIR KIT	58
Z1341XL/Z1343 REPAIR KIT	59
Z1345 REPAIR KIT	59
Z1348 REPAIR KIT	59
Z1350 REPAIR KIT	60
Z1361 REPAIR KIT	60
Z1396XL REPAIR KIT	60

INTERCEPTORS

GT2700 GREASE INTERCEPTOR	62
GT2700-EXT GREASE INTERCEPTOR EXTENSIONS - 6"	62
GT2701 LOW-PROFILE GREASE INTERCEPTOR	63
GT2702 POLYETHYLENE GREASE INTERCEPTOR	64
GT2702-6-EXT GREASE INTERCEPTOR - 6" EXTENSION	64

BASINS & SINKS

Z843M1 SERVICE SINK FAUCET	66
MS2624 COUNTERTOP DROP-IN SINK	66
Z1996 MOP SERVICE BASIN	67

MISCELLANEOUS

TS2900 TRAP STANDARD	70
BW2930 BACKWATER VALVE	70
WH2950-XL LEAD-FREE WATER HAMMER ARRESTOR	71
WM2960 WASHING MACHINE VALVE	72
WM2961 ENCASED WASHING MACHINE VALVE	72
UF2970 HORIZONTAL URINAL FLANGE KIT	73
UF2971 SPIGOT FIT URINAL FLANGE KIT	73
CF2988 INSIDE 3" PIPE CLOSET FLANGE	73
CF2988 INSIDE 3" PIPE CLOSET FLANGE	74
CF2991 ZURN FLO-BOWL™ JR.	75
CD4P SPEEDFLEX AIR GAP	76

Zurn Commercial Drainage prides itself on offering our customers a wide variety of quality plumbing products and exceptional technical support, through a staff of qualified engineers, knowledgeable inside sales personnel, and the best known sales rep organizations in the industry.

It is our daily goal to provide the most efficient, cost effective plumbing products by giving traditional plumbing distributors the resources to service plumbing and mechanical contractors with labor-saving products, while maintaining superior quality.

At Zurn, our customer is our driver. We focus our efforts on our customers to earn their trust and repeat business. Without this our company would not exist.

PLASTIC EZ1™ NOMENCLATURE DECODER

SHIM KIT

Shims built into the rough-in cover for tilt adjustment, screws included.

ROUGH-IN COVER

Designed to stand up to rigorous jobsites with 3,000 lbs load rating.

PROTECTIVE LABEL

Keeps grate/cover finish intact until the job is complete.

COVER OPTIONS

EZ1-R6 = Round 6" Top
EZ1-S6 = Square 6" Top
EZ-R6 = Round 6" Top
EZ-S6 = Square 6" Top
EZ-ST = Square 5" Top
EZ2-ST = Square Top

BODY OPTIONS

PV = PVC Body Material
AB = ABS Body Material

OUTLET SIZES

2" = 2"x3" outlet
3" = 3"x4" outlet
4" = 4" outlet



A Whole Family of Product

EZ = Slab on grade adjustable drain
EZ1 = Floor drain with clamping collar
EZ2 = Floor drain with deck plate
FD2 = Floor drain with deck plate and no post-pour adjustment

Model Number Example

[EZ]-[PV][2]-[R][6]-[SS]

EZ = Denotes post-pour adjustability
PV = Outlet material
2 = Denotes outlet size

R = Cover type (round or square)
6 = Cover size
SS = Cover material

**Comes standard with 5" nickel bronze cover unless otherwise noted.*

Form No. 230-029-2, 10/17 | Patent zurn.ca/patents

ZURN.CA US 1.855.ONE.ZURN **CANADA** 1.877.892.5216

Learn more at zurn.ca/ez1

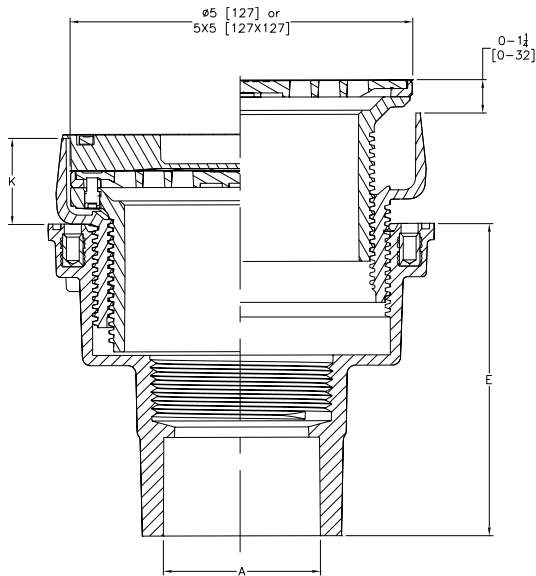
EZ-5 5" TOP ASSEMBLY ADJUSTABLE ON GRADE FLOOR DRAIN WITH EZ1™ TECHNOLOGY	6
EZ-6 6" TOP ASSEMBLY ADJUSTABLE ON GRADE FLOOR DRAIN WITH EZ1™ TECHNOLOGY	7
EZ1™ 5" TOP ASSEMBLY ADJUSTABLE FLOOR DRAIN WITH EZ1 TECHNOLOGY	8
EZ1-6 6" TOP ASSEMBLY ADJUSTABLE FLOOR DRAIN WITH DECK PLATE AND EZ1™ TECHNOLOGY	9
EZ2 5" TOP ASSEMBLY ADJUSTABLE FLOOR DRAIN WITH DECK PLATE AND EZ1™ TECHNOLOGY	10
EZC 5" TOP ASSEMBLY ADJUSTABLE FLOOR CLEANOUT WITH EZ1™ TECHNOLOGY	11
EZC-6 6" TOP ASSEMBLY ADJUSTABLE FLOOR CLEANOUT WITH EZ1™ TECHNOLOGY	12
EZC2 5" TOP ASSEMBLY ADJUSTABLE FLOOR CLEANOUT WITH DECK PLATE AND EZ1™ TECHNOLOGY	13
FD2 5" TOP ASSEMBLY ADJUSTABLE FLOOR DRAIN WITH DECK PLATE	14
CO2 5" TOP ASSEMBLY ADJUSTABLE FLOOR CLEANOUT WITH DECK PLATE	15

EZ-5 5" TOP ASSEMBLY ADJUSTABLE ON GRADE FLOOR DRAIN WITH EZ1™ TECHNOLOGY



- Zurn EZ1 floor and shower drain, PVC or ABS solvent weld body with bottom outlet and 1/2" [13 mm] trap primer connection knock-out plug and top assembly.
- EZ1 drainage series is engineered to simplify product installation, comprised of concrete shield, up to 1" [25 mm] of vertical post pour adjustment, pre-packaged shims for tilt correction and integrated self-contained round nickel bronze light duty strainer with rough-in cover for protection during the concrete pour.

BODY TYPE	MODEL NUMBER	DIM. IN INCHES [MM]				APPROX. WT. LB [KG]	STRAINER OPEN AREA	STRAINER TYPE	LIST PRICE EACH
		A	E	MIN	MAX				
PVC	EZ-PV2	2-3 [51-76]	4-3/4 [121]	1-5/8 [41]	2-23/32 [69]	3 [1]	6-1/4 [40]	Round Nickel Bronze	97.00
	EZ-PV3	3-4 [76-102]	3-3/4 [95]	1-5/8 [41]	2-23/32 [69]	3 [1]	6-1/4 [40]	Round Nickel Bronze	97.00
	EZ-PV4	4 [102]	3-15/16 [100]	1-5/8 [41]	2-23/32 [69]	3 [1]	6-1/4 [40]	Round Nickel Bronze	97.00
	EZ-PV2-ST	2-3 [51-76]	4-3/4 [121]	1-27/32 [47]	2-7/8 [75]	4 [2]	9 [58]	Square Nickel Bronze	124.00
	EZ-PV3-ST	3-4 [76-102]	3-3/4 [95]	1-27/32 [47]	2-7/8 [75]	4 [2]	9 [58]	Square Nickel Bronze	124.00
	EZ-PV4-ST	4 [102]	3-15/16 [100]	1-27/32 [47]	2-7/8 [75]	4 [2]	9 [58]	Square Nickel Bronze	124.00
	EZ-PV2-SS	2-3 [51-76]	4-3/4 [121]	1-5/8 [41]	2-23/32 [69]	3 [1]	6-1/4 [40]	Round Stainless Steel	97.00
	EZ-PV3-SS	3-4 [76-102]	3-3/4 [95]	1-5/8 [41]	2-23/32 [69]	3 [1]	6-1/4 [40]	Round Stainless Steel	97.00
	EZ-PV4-SS	4 [102]	3-15/16 [100]	1-5/8 [41]	2-23/32 [69]	3 [1]	6-1/4 [40]	Round Stainless Steel	97.00
	EZ-PV2-ST-SS	2-3 [51-76]	4-3/4 [121]	1-27/32 [47]	2-7/8 [75]	4 [2]	9 [58]	Square Stainless Steel	124.00
	EZ-PV3-ST-SS	3-4 [76-102]	3-3/4 [95]	1-27/32 [47]	2-7/8 [75]	4 [2]	9 [58]	Square Stainless Steel	124.00
	EZ-PV4-ST-SS	4 [102]	3-15/16 [100]	1-27/32 [47]	2-7/8 [75]	4 [2]	9 [58]	Square Stainless Steel	124.00



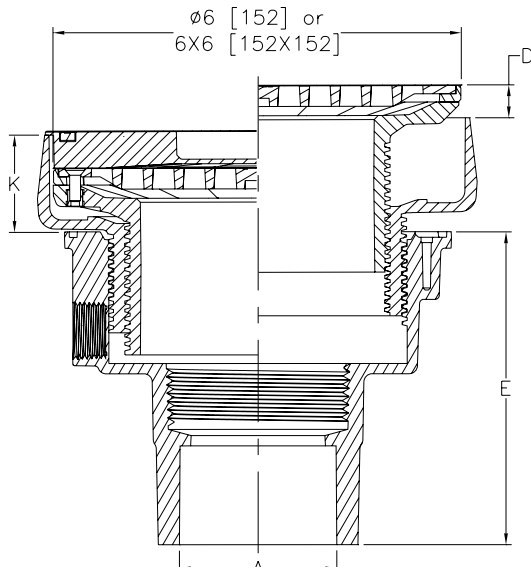
SUFFIX	DESCRIPTION	ADD
-EF	3/4" [19] Extension Frame	107.00
-TSP	Trap Seal Protection Device (Size Matches Drain Outlet Selected, Not Available in 4") (See Z1072)	POA
-U	2"-3-1/4" [51-83] High Extension Adapter	42.00
-UP	1-3/4" [44] Pre-Pour Adjustment Extension Adapter	POA
-VP	Vandal-Proof Secured Top	11.00
-Y	Sediment Bucket	29.00

EZ-6 6" TOP ASSEMBLY ADJUSTABLE ON GRADE FLOOR DRAIN WITH EZ1™ TECHNOLOGY



- Zurn EZ1 floor and shower drain, PVC or ABS solvent weld body with bottom outlet and 1/2" [13] trap primer connection knock-out plug and top assembly.
- EZ1 drainage series is engineered to simplify product installation, comprised of concrete shield, up to 1-13/16" [46] of vertical post pour adjustment, pre-packaged shims for tilt correction and integrated self-contained square or round light duty strainer in nickel bronze or stainless steel with rough-in cover for protection during the concrete pour.

BODY TYPE	MODEL NUMBER	DIM. IN INCHES [MM]						APPROX. WT. LB [KG]	STRAINER OPEN AREA	STRAINER TYPE	LIST PRICE EACH
		A	E	D		K					
				MIN	MAX	MIN	MAX				
PVC	EZ-PV2-R6	2-3 [51-76]	4-3/4 [121]	0	13/16 [21]	1-3/4 [44]	2-13/16 [71]	4 [2]	9 [58]	Round Nickel Bronze	131.00
	EZ-PV3-R6	3-4 [76-102]	3-3/4 [95]	0	13/16 [21]	1-3/4 [44]	2-13/16 [71]	4 [2]	9 [58]	Round Nickel Bronze	131.00
	EZ-PV4-R6	4 [102]	3 -15/16 [100]	0	13/16 [21]	1-3/4 [44]	2-13/16 [71]	4 [2]	9 [58]	Round Nickel Bronze	131.00
	EZ-PV2-S6	2-3 [51-76]	4-3/4 [121]	0	3/4 [19]	2 [51]	3-1/32 [77]	5 [2]	13 [84]	Square Nickel Bronze	177.00
	EZ-PV3-S6	3-4 [76-102]	3-3/4 [95]	0	3/4 [19]	2 [51]	3-1/32 [77]	5 [2]	13 [84]	Square Nickel Bronze	177.00
	EZ-PV4-S6	4 [102]	3 -15/16 [100]	0	3/4 [19]	2 [51]	3-1/32 [77]	5 [2]	13 [84]	Square Nickel Bronze	177.00
	EZ-PV2-R6-SS	2-3 [51-76]	4-3/4 [121]	0	13/16 [21]	1-3/4 [44]	2-13/16 [71]	4 [2]	9 [58]	Round Stainless Steel	259.00
	EZ-PV3-R6-SS	3-4 [76-102]	3-3/4 [95]	0	13/16 [21]	1-3/4 [44]	2-13/16 [71]	4 [2]	9 [58]	Round Stainless Steel	259.00
	EZ-PV4-R6-SS	4 [102]	3 -15/16 [100]	0	13/16 [21]	1-3/4 [44]	2-13/16 [71]	4 [2]	9 [58]	Round Stainless Steel	259.00
	EZ-PV2-S6-SS	2-3 [51-76]	4-3/4 [121]	0	3/4 [19]	2 [51]	3-1/32 [77]	5 [2]	13 [84]	Square Stainless Steel	177.00
	EZ-PV3-S6-SS	3-4 [76-102]	3-3/4 [95]	0	3/4 [19]	2 [51]	3-1/32 [77]	5 [2]	13 [84]	Square Stainless Steel	177.00
	EZ-PV4-S6-SS	4 [102]	3 -15/16 [100]	0	3/4 [19]	2 [51]	3-1/32 [77]	5 [2]	13 [84]	Square Stainless Steel	177.00



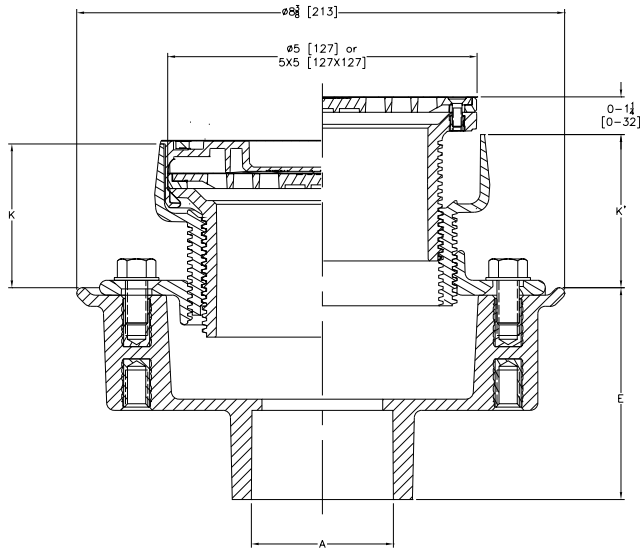
SUFFIX	DESCRIPTION	ADD
-EF	3/4" [19] Extension Frame	107.00
-TSP	Trap Seal Protection Device (Size Matches Drain Outlet Selected, Not Available in 4") (See Z1072)	POA
-U	2"-3-1/4" [51-83] High Extension Adapter	42.00
-UP	1-3/4" [44] Pre-Pour Adjustment Extension Adapter	POA
-VP	Vandal-Proof Secured Top	11.00
-Y	Sediment Bucket	29.00

EZ1™ 5" TOP ASSEMBLY ADJUSTABLE FLOOR DRAIN WITH EZ1 TECHNOLOGY



- Zurn EZ1 floor and shower drain, PVC or ABS solvent weld body with bottom outlet and 1/2" [13 mm] trap primer connection knock-out plug, combination invertible membrane clamp and adjustable collar with seepage slots and top assembly.
- EZ1 drainage series is engineered to simplify product installation, comprised of concrete shield, up to 1" [25 mm] of vertical post pour adjustment, prepackaged shims for tilt correction and integrated self-contained square or round light duty strainer in nickel bronze or stainless steel with rough-in cover for protection during concrete pour.
- **Note:** Minimum K dimension is only possible with -LR option when using square strainer

BODY TYPE	MODEL NUMBER	DIM. IN INCHES [MM]						APPROX. WT. LB [KG]	STRAINER OPEN AREA	STRAINER TYPE	LIST PRICE EACH
		A	E	K		K'					
				MIN	MAX	MIN	MAX				
PVC	EZ1-PV2	2-3 [51-76]	3-9/16 [91]	1-25/32 [45]	2-31/32 [75]	2-9/32 [58]	3-15/32 [88]	5 [2]	6-1/4 [40]	Round Nickel Bronze	127.00
	EZ1-PV3	3-4 [76-102]	3-9/16 [91]	1-25/32 [45]	2-31/32 [75]	2-9/32 [58]	3-15/32 [88]	5 [2]	6-1/4 [40]	Round Nickel Bronze	208.00
	EZ1-PV4	4 [102]	3-13/16 [97]	1-25/32 [45]	2-31/32 [75]	2-9/32[58]	3-15/32 [88]	5 [2]	6-1/4 [40]	Round Nickel Bronze	127.00
	EZ1-PV2-ST	2-3 [51-76]	3-9/16 [91]	1-31/32 [50]	3-1/8 [79]	2-15/32 [63]	3-5/8 [92]	6 [3]	9 [58]	Square Nickel Bronze	154.00
	EZ1-PV3-ST	3-4 [76-102]	3-9/16 [91]	1-31/32 [50]	3-1/8 [79]	2-15/32 [63]	3-5/8 [92]	6 [3]	9 [58]	Square Nickel Bronze	154.00
	EZ1-PV4-ST	4 [102]	3-13/16 [97]	1-31/32 [50]	3-1/8 [79]	2-15/32 [63]	3-5/8 [92]	6 [3]	9 [58]	Square Nickel Bronze	154.00
	EZ1-PV2-SS	2-3 [51-76]	3-9/16 [91]	1-25/32 [45]	2-31/32 [75]	2-9/32 [58]	3-15/32 [88]	5 [2]	6-1/4 [40]	Round Stainless Steel	127.00
	EZ1-PV3-SS	3-4 [76-102]	3-9/16 [91]	1-25/32 [45]	2-31/32 [75]	2-9/32 [58]	3-15/32 [88]	5 [2]	6-1/4 [40]	Round Stainless Steel	127.00
	EZ1-PV4-SS	4 [102]	3-13/16 [97]	1-25/32 [45]	2-31/32 [75]	2-9/32[58]	3-15/32 [88]	5 [2]	6-1/4 [40]	Round Stainless Steel	127.00
	EZ1-PV2-ST-SS	2-3 [51-76]	3-9/16 [91]	1-31/32 [50]	3-1/8 [79]	2-15/32 [63]	3-5/8 [92]	6 [3]	9 [58]	Square Stainless Steel	154.00
	EZ1-PV3-ST-SS	3-4 [76-102]	3-9/16 [91]	1-31/32 [50]	3-1/8 [79]	2-15/32 [63]	3-5/8 [92]	6 [3]	9 [58]	Square Stainless Steel	154.00
	EZ1-PV4-ST-SS	4 [102]	3-13/16 [97]	1-31/32 [50]	3-1/8 [79]	2-15/32 [63]	3-5/8 [92]	6 [3]	9 [58]	Square Stainless Steel	154.00
ABS	EZ1-AB2	2-3 [51-76]	3-9/16 [91]	1-25/32 [45]	2-31/32 [75]	2-9/32 [58]	3-15/32 [88]	5 [2]	6-1/4 [40]	Round Nickel Bronze	127.00
	EZ1-AB3	3-4 [76-102]	3-9/16 [91]	1-25/32 [45]	2-31/32 [75]	2-9/32 [58]	3-15/32 [88]	5 [2]	6-1/4 [40]	Round Nickel Bronze	127.00
	EZ1-AB4	4 [102]	3-13/16 [97]	1-25/32 [45]	2-31/32 [75]	2-9/32[58]	3-15/32 [88]	5 [2]	6-1/4 [40]	Round Nickel Bronze	127.00
	EZ1-AB2-ST	2-3 [51-76]	3-9/16 [91]	1-31/32 [50]	3-1/8 [79]	2-15/32 [63]	3-5/8 [92]	6 [3]	9 [58]	Square Nickel Bronze	154.00
	EZ1-AB3-ST	3-4 [76-102]	3-9/16 [91]	1-31/32 [50]	3-1/8 [79]	2-15/32 [63]	3-5/8 [92]	6 [3]	9 [58]	Square Nickel Bronze	154.00
	EZ1-AB4-ST	4 [102]	3-13/16 [97]	1-31/32 [50]	3-1/8 [79]	2-15/32 [63]	3-5/8 [92]	6 [3]	9 [58]	Square Nickel Bronze	154.00
	EZ1-AB2-SS	2-3 [51-76]	3-9/16 [91]	1-25/32 [45]	2-31/32 [75]	2-9/32 [58]	3-15/32 [88]	5 [2]	6-1/4 [40]	Round Stainless Steel	127.00
	EZ1-AB3-SS	3-4 [76-102]	3-9/16 [91]	1-25/32 [45]	2-31/32 [75]	2-9/32 [58]	3-15/32 [88]	5 [2]	6-1/4 [40]	Round Stainless Steel	127.00
	EZ1-AB4-SS	4 [102]	3-13/16 [97]	1-25/32 [45]	2-31/32 [75]	2-9/32[58]	3-15/32 [88]	5 [2]	6-1/4 [40]	Round Stainless Steel	127.00
	EZ1-AB2-ST-SS	2-3 [51-76]	3-9/16 [91]	1-31/32 [50]	3-1/8 [79]	2-15/32 [63]	3-5/8 [92]	6 [3]	9 [58]	Square Stainless Steel	154.00
	EZ1-AB3-ST-SS	3-4 [76-102]	3-9/16 [91]	1-31/32 [50]	3-1/8 [79]	2-15/32 [63]	3-5/8 [92]	6 [3]	9 [58]	Square Stainless Steel	154.00
	EZ1-AB4-ST-SS	4 [102]	3-13/16 [97]	1-31/32 [50]	3-1/8 [79]	2-15/32 [63]	3-5/8 [92]	6 [3]	9 [58]	Square Stainless Steel	154.00



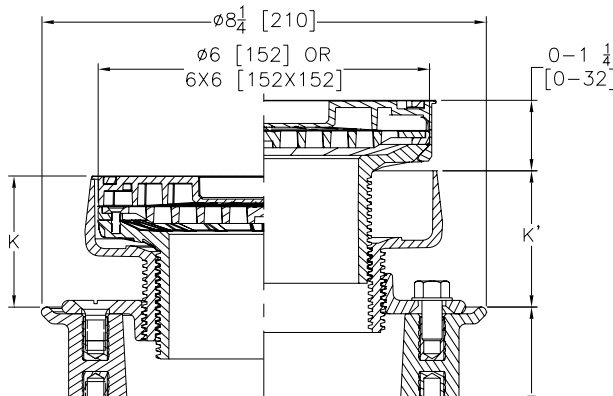
SUFFIX	DESCRIPTION	ADD
-EF	3/4" [19] Extension Frame	107.00
-LR	Low Rough-In (Square Only)	N/C
-SA	Stabilizer Assembly (See Z1035)	63.00
-SQ	Stabilizer Q-Deck (See Z1035-Q)	79.00
-TSP	Trap Seal Protection Device (Size Matches Drain Outlet Selected) (See Z1072)	POA
-U	2"-3-1/4" [51-83] High Extension Adapter	42.00
-UP	1-3/4" [44] Pre-Pour Adjustment Extension Adapter	POA
-VP	Vandal-Proof Secured Top	11.00
-Y	Sediment Bucket	29.00

EZ1-6 6" TOP ASSEMBLY ADJUSTABLE FLOOR DRAIN WITH DECK PLATE AND EZ1™ TECHNOLOGY



- Zurn EZ1 floor and shower drain, PVC or ABS solvent weld body with bottom outlet and 1/2" trap primer connection knock-out plug, combination invertible membrane clamp and adjustable collar with seepage slots and top assembly.
- EZ1 drainage series is engineered to simplify product installation, comprised of concrete shield, up to 1" [25] of vertical post pour adjustment, pre-packaged shims for tilt correction and integrated self-contained square or round light duty strainer in nickel bronze or stainless steel with rough-in cover for protection during concrete pour.
- **Note:** Minimum K dimension is only possible with -LR option

BODY TYPE	MODEL NUMBER	DIM. IN INCHES [MM]						APPROX. WT. LB [KG]	STRAINER OPEN AREA	STRAINER TYPE	LIST PRICE EACH
		A	E	K		K'					
				MIN	MAX	MIN	MAX				
PVC	EZ1-PV2-R6	2-3 [51-76]	3-9/16 [90]	1-7/8 [48]	3-1/16 [78]	2-3/8 [60]	3-9/16 [90]	5 [2]	9 [58]	Round Nickel Bronze	161.00
	EZ1-PV3-R6	3-4 [76-102]	3-9/16 [90]	1-7/8 [48]	3-1/16 [78]	2-3/8 [60]	3-9/16 [90]	5 [2]	9 [58]	Round Nickel Bronze	161.00
	EZ1-PV4-R6	4 [102]	3-11/16 [94]	1-7/8 [48]	3-1/16 [78]	2-3/8 [60]	3-9/16 [90]	5 [2]	9 [58]	Round Nickel Bronze	161.00
	EZ1-PV2-S6	2-3 [51-76]	3-9/16 [90]	2-1/8 [54]	3-9/32 [83]	2-5/8 [67]	3-25/32 [96]	6 [3]	13 [84]	Square Nickel Bronze	207.00
	EZ1-PV3-S6	3-4 [76-102]	3-9/16 [90]	2-1/8 [54]	3-9/32 [83]	2-5/8 [67]	3-25/32 [96]	6 [3]	13 [84]	Square Nickel Bronze	207.00
	EZ1-PV4-S6	4 [102]	3-11/16 [94]	2-1/8 [54]	3-9/32 [83]	2-5/8 [67]	3-25/32 [96]	6 [3]	13 [84]	Square Nickel Bronze	207.00
	EZ1-PV2-R6-SS	2-3 [51-76]	3-9/16 [90]	1-7/8 [48]	3-1/16 [78]	2-3/8 [60]	3-9/16 [90]	5 [2]	10 [65]	Round Stainless Steel	161.00
	EZ1-PV3-R6-SS	3-4 [76-102]	3-9/16 [90]	1-7/8 [48]	3-1/16 [78]	2-3/8 [60]	3-9/16 [90]	5 [2]	10 [65]	Round Stainless Steel	161.00
	EZ1-PV4-R6-SS	4 [102]	3-11/16 [94]	1-7/8 [48]	3-1/16 [78]	2-3/8 [60]	3-9/16 [90]	5 [2]	10 [65]	Round Stainless Steel	161.00
	EZ1-PV2-S6-SS	2-3 [51-76]	3-9/16 [90]	2-1/8 [54]	3-9/32 [83]	2-5/8 [67]	3-25/32 [96]	6 [3]	13 [84]	Square Stainless Steel	207.00
	EZ1-PV3-S6-SS	3-4 [76-102]	3-9/16 [90]	2-1/8 [54]	3-9/32 [83]	2-5/8 [67]	3-25/32 [96]	6 [3]	13 [84]	Square Stainless Steel	207.00
	EZ1-PV4-S6-SS	4 [102]	3-11/16 [94]	2-1/8 [54]	3-9/32 [83]	2-5/8 [67]	3-25/32 [96]	6 [3]	13 [84]	Square Stainless Steel	207.00
ABS	EZ1-AB2-R6	2-3 [51-76]	3-9/16 [90]	1-7/8 [48]	3-1/16 [78]	2-3/8 [60]	3-9/16 [90]	5 [2]	9 [58]	Round Nickel Bronze	161.00
	EZ1-AB3-R6	3-4 [76-102]	3-9/16 [90]	1-7/8 [48]	3-1/16 [78]	2-3/8 [60]	3-9/16 [90]	5 [2]	9 [58]	Round Nickel Bronze	161.00
	EZ1-AB4-R6	4 [102]	3-11/16 [94]	1-7/8 [48]	3-1/16 [78]	2-3/8 [60]	3-9/16 [90]	5 [2]	9 [58]	Round Nickel Bronze	161.00
	EZ1-AB2-S6	2-3 [51-76]	3-9/16 [90]	2-1/8 [54]	3-9/32 [83]	2-5/8 [67]	3-25/32 [96]	6 [3]	13 [84]	Square Nickel Bronze	207.00
	EZ1-AB3-S6	3-4 [76-102]	3-9/16 [90]	2-1/8 [54]	3-9/32 [83]	2-5/8 [67]	3-25/32 [96]	6 [3]	13 [84]	Square Nickel Bronze	207.00
	EZ1-AB4-S6	4 [102]	3-11/16 [94]	2-1/8 [54]	3-9/32 [83]	2-5/8 [67]	3-25/32 [96]	6 [3]	13 [84]	Square Nickel Bronze	207.00
	EZ1-AB2-R6-SS	2-3 [51-76]	3-9/16 [90]	1-5/8 [41]	3-1/16 [78]	2-3/8 [60]	3-9/16 [90]	5 [2]	10 [65]	Round Stainless Steel	161.00
	EZ1-AB3-R6-SS	3-4 [76-102]	3-9/16 [90]	1-5/8 [41]	3-1/16 [78]	2-3/8 [60]	3-9/16 [90]	5 [2]	10 [65]	Round Stainless Steel	161.00
	EZ1-AB4-R6-SS	4 [102]	3-11/16 [94]	1-5/8 [41]	3-1/16 [78]	2-3/8 [60]	3-9/16 [90]	5 [2]	10 [65]	Round Stainless Steel	161.00
	EZ1-AB2-S6-SS	2-3 [51-76]	3-9/16 [90]	1-13/16 [46]	3-9/32 [83]	2-5/8 [67]	3-25/32 [96]	6 [3]	13 [84]	Square Stainless Steel	207.00
	EZ1-AB3-S6-SS	3-4 [76-102]	3-9/16 [90]	1-13/16 [46]	3-9/32 [83]	2-5/8 [67]	3-25/32 [96]	6 [3]	13 [84]	Square Stainless Steel	207.00
	EZ1-AB4-S6-SS	4 [102]	3-11/16 [94]	1-13/16 [46]	3-9/32 [83]	2-5/8 [67]	3-25/32 [96]	6 [3]	13 [84]	Square Stainless Steel	207.00



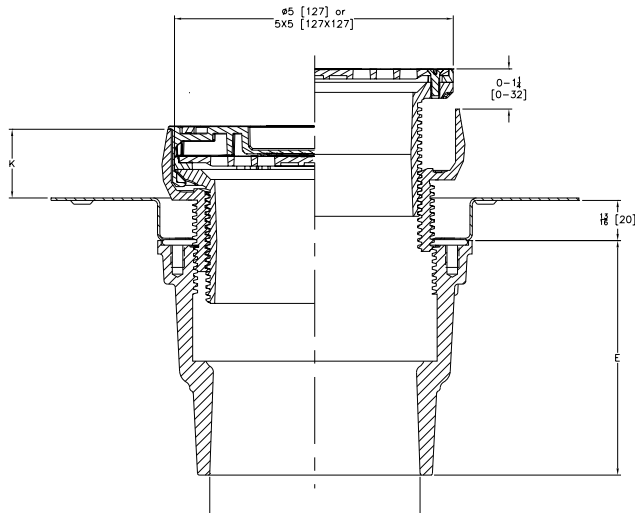
SUFFIX	DESCRIPTION	ADD
-EF	3/4" [19] Extension Frame	107.00
-LR	Low Rough-In	N/C
-SA	Stabilizer Assembly (See Z1035)	63.00
-SQ	Stabilizer Q-Deck (See Z1035-Q)	79.00
-TSP	Trap Seal Protection Device (Size Matches Drain Outlet Selected) (See Z1072)	POA
-U	2"-3-1/4" [51-83] High Extension Adapter	42.00
-UP	1-3/4" [44] Pre-Pour Adjustment Extension Adapter	POA
-VP	Vandal-Proof Secured Top	11.00
-Y	Sediment Bucket	29.00

EZ2 5" TOP ASSEMBLY ADJUSTABLE FLOOR DRAIN WITH DECK PLATE AND EZ1™ TECHNOLOGY



- Zurn EZ1 floor and shower drain, PVC or ABS solvent weld body with bottom outlet and 1/2" [13 mm] trap primer connection knock-out plug, deck plate, and top assembly.
- EZ1 drainage series is engineered to simplify product installation, comprised of concrete shield, up to 1" [25 mm] of vertical post pour adjustment, pre-packaged shims for tilt correction and integrated self-contained square or round light duty strainer in nickel bronze or stainless steel with rough-in cover for protection during the concrete pour.

BODY TYPE	MODEL NUMBER	DIM. IN INCHES [MM]				APPROX. WT. LB [KG]	STRAINER OPEN AREA	STRAINER TYPE	LIST PRICE EACH
		A	E	K					
				MIN	MAX				
PVC	EZ2-PV2	2-3 [51-76]	4-3/4 [121]	7/8 [22]	1-13/16 [46]	5 [2]	6-1/4 [40]	Round Nickel Bronze	139.00
	EZ2-PV3	3-4 [76-102]	3-3/4 [95]	7/8 [22]	1-13/16 [46]	5 [2]	6-1/4 [40]	Round Nickel Bronze	139.00
	EZ2-PV4	4 [102]	3-15/16 [100]	7/8 [22]	1-13/16 [46]	5 [2]	6-1/4 [40]	Round Nickel Bronze	139.00
	EZ2-PV2-ST	2-3 [51-76]	4-3/4 [121]	1-27/32 [47]	1-31/32 [50]	6 [3]	9 [58]	Square Nickel Bronze	456.00
	EZ2-PV3-ST	3-4 [76-102]	3-3/4 [95]	1-27/32 [47]	1-31/32 [50]	6 [3]	9 [58]	Square Nickel Bronze	456.00
	EZ2-PV4-ST	4 [102]	3-15/16 [100]	1-27/32 [47]	1-31/32 [50]	5 [2]	9 [58]	Square Nickel Bronze	456.00
	EZ2-PV2-SS	2-3 [51-76]	4-3/4 [121]	7/8 [22]	1-13/16 [46]	5 [2]	6-1/4 [40]	Round Stainless Steel	139.00
	EZ2-PV3-SS	3-4 [76-102]	3-3/4 [95]	7/8 [22]	1-13/16 [46]	5 [2]	6-1/4 [40]	Round Stainless Steel	139.00
	EZ2-PV4-SS	4 [102]	3-15/16 [100]	7/8 [22]	1-13/16 [46]	5 [2]	6-1/4 [40]	Round Stainless Steel	139.00
	EZ2-PV2-ST-SS	2-3 [51-76]	4-3/4 [121]	1-27/32 [47]	1-31/32 [50]	6 [3]	9 [58]	Square Stainless Steel	456.00
	EZ2-PV3-ST-SS	3-4 [76-102]	3-3/4 [95]	1-27/32 [47]	1-31/32 [50]	6 [3]	9 [58]	Square Stainless Steel	456.00
	EZ2-PV4-ST-SS	4 [102]	3-15/16 [100]	1-27/32 [47]	1-31/32 [50]	7 [3]	9 [58]	Square Stainless Steel	456.00



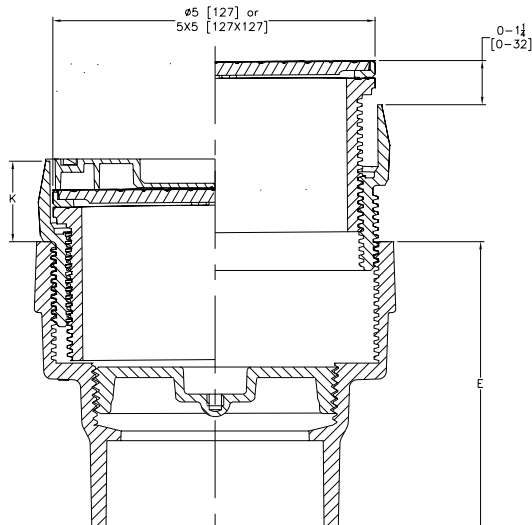
SUFFIX	DESCRIPTION	ADD
-CC	Stainless Steel Clamp Collar	28.00
-EF	3/4" [19] Extension Frame	107.00
-TSP	Trap Seal Protection Device (Size Matches Drain Outlet Selected, Not Available in 4") (See Z1072)	POA
-U	2"-3-1/4" [51-83] High Extension Adapter	42.00
-UP	1-3/4" [44] Pre-Pour Adjustment Extension Adapter	POA
-VP	Vandal-Proof Secured Top	11.00
-Y	Sediment Bucket	29.00

EZC 5" TOP ASSEMBLY ADJUSTABLE FLOOR CLEANOUT WITH EZ1™ TECHNOLOGY



- Zurn EZ1 Floor Cleanout, PVC or ABS solvent weld body, with gas and water tight ABS threaded tapered plug and top assembly.
- EZ1 cleanout series is engineered to simplify product installation, comprised of concrete shield, up to 1" [25 mm] of vertical post pour adjustment, pre-packaged shims for tilt correction, and integrated self contained square or round light duty scoriated cover in nickel bronze or stainless steel with rough-in cover for protection during the concrete pour.
- Cleanout is designed in accordance with ASME A112.36.2M.

BODY TYPE	DIM. IN INCHES [MM]						LIST PRICE EACH	
	MODEL NUMBER	A	E	K		APPROX. WT. LB [KG]		STRAINER TYPE
				MIN	MAX			
PVC	EZC-PV2	2-3 [51-76]	4-3/4 [121]	1-5/8 [41]	2-23/32 [69]	4 [2]	Round Nickel Bronze	145.00
	EZC-PV3	3-4 [76-102]	4-3/4 [121]	1-3/4 [44]	2-23/32 [69]	4 [2]	Round Nickel Bronze	145.00
	EZC-PV4	4 [102]	4-3/4 [121]	1-3/4 [44]	2-23/32 [69]	4 [2]	Round Nickel Bronze	145.00
	EZC-PV2-ST	2-3 [51-76]	4-3/4 [121]	1-27/32 [46]	2-7/8 [73]	5 [2]	Square Nickel Bronze	178.00
	EZC-PV3-ST	3-4 [76-102]	4-3/4 [121]	1-27/32 [46]	2-7/8 [73]	5 [2]	Square Nickel Bronze	178.00
	EZC-PV4-ST	4 [102]	4-3/4 [121]	1-27/32 [46]	2-7/8 [73]	5 [2]	Square Nickel Bronze	178.00
	EZC-PV2-SS	2-3 [51-76]	4-3/4 [121]	1-5/8 [41]	2-23/32 [69]	4 [2]	Round Stainless Steel	145.00
	EZC-PV3-SS	3-4 [76-102]	4-3/4 [121]	1-3/4 [44]	2-23/32 [69]	4 [2]	Round Stainless Steel	145.00
	EZC-PV4-SS	4 [102]	4-3/4 [121]	1-3/4 [44]	2-23/32 [69]	4 [2]	Round Stainless Steel	145.00
	EZC-PV2-ST-SS	2-3 [51-76]	4-3/4 [121]	1-27/32 [46]	2-7/8 [73]	5 [2]	Square Stainless Steel	178.00
	EZC-PV3-ST-SS	3-4 [76-102]	4-3/4 [121]	1-27/32 [46]	2-7/8 [73]	5 [2]	Square Stainless Steel	178.00
	EZC-PV4-ST-SS	4 [102]	4-3/4 [121]	1-27/32 [46]	2-7/8 [73]	5 [2]	Square Stainless Steel	178.00

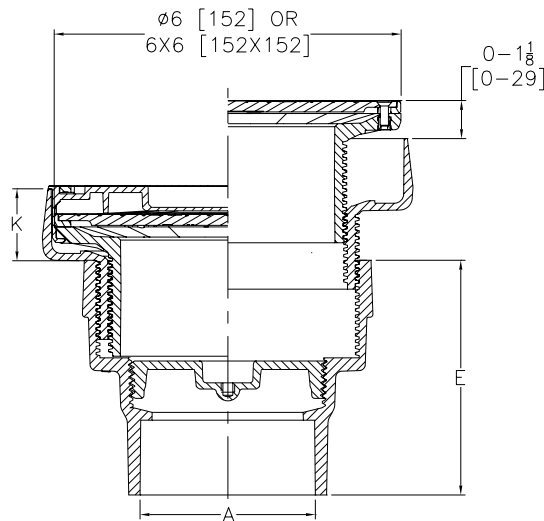


EZC-6 6" TOP ASSEMBLY ADJUSTABLE FLOOR CLEANOUT WITH EZ1™ TECHNOLOGY



- Zurn EZ1 Floor Cleanout, PVC or ABS solvent weld body, with gas and water tight ABS threaded tapered plug and top assembly.
- EZ1 cleanout series is engineered to simplify product installation, comprised of concrete shield, up to 7/8" [22] of vertical post pour adjustment, pre-packaged shims for tilt correction, and integrated self contained square or round light duty scoriated cover in nickel bronze or stainless steel with rough-in cover for protection during the concrete pour.
- Cleanout is designed in accordance with ASME A112.36.2M.

BODY TYPE	MODEL NUMBER	DIM. IN INCHES [MM]				APPROX. WT. LB [KG]	STRAINER TYPE	LIST PRICE EACH
		A	E	MIN	MAX			
PVC	EZC-PV3-R6	3-4 [76-102]	4-3/4 [121]	1-15/32 [37]	2-19/32 [66]	6 [3]	Round Nickel Bronze	161.00
	EZC-PV4-R6	4 [102]	4-3/4 [121]	1-15/32 [37]	2-19/32 [66]	6 [3]	Round Nickel Bronze	161.00
	EZC-PV3-S6	3-4 [76-102]	4-3/4 [121]	1-11/16 [43]	2-23/32 [69]	7 [3]	Square Nickel Bronze	196.00
	EZC-PV4-S6	4 [102]	4-3/4 [121]	1-11/16 [43]	2-23/32 [69]	7 [3]	Square Nickel Bronze	196.00
	EZC-PV3-R6-SS	3-4 [76-102]	4-3/4 [121]	1-15/32 [37]	2-19/32 [66]	6 [3]	Round Stainless Steel	161.00
	EZC-PV4-R6-SS	4 [102]	4-3/4 [121]	1-15/32 [37]	2-19/32 [66]	6 [3]	Round Stainless Steel	161.00
	EZC-PV3-S6-SS	3-4 [76-102]	4-3/4 [121]	1-11/16 [43]	2-23/32 [69]	7 [3]	Square Stainless Steel	196.00
	EZC-PV4-S6-SS	4 [102]	4-3/4 [121]	1-11/16 [43]	2-23/32 [69]	7 [3]	Square Stainless Steel	196.00
ABS	EZC-AB3-R6	3-4 [76-102]	4-3/4 [121]	1-15/32 [37]	2-19/32 [66]	6 [3]	Round Nickel Bronze	161.00
	EZC-AB4-R6	4 [102]	4-3/4 [121]	1-15/32 [37]	2-19/32 [66]	6 [3]	Round Nickel Bronze	161.00
	EZC-AB3-S6	3-4 [76-102]	4-3/4 [121]	1-11/16 [43]	2-23/32 [69]	7 [3]	Square Nickel Bronze	196.00
	EZC-AB4-S6	4 [102]	4-3/4 [121]	1-11/16 [43]	2-23/32 [69]	7 [3]	Square Nickel Bronze	196.00
	EZC-AB3-R6-SS	3-4 [76-102]	4-3/4 [121]	1-15/32 [37]	2-19/32 [66]	6 [3]	Round Stainless Steel	161.00
	EZC-AB4-R6-SS	4 [102]	4-3/4 [121]	1-15/32 [37]	2-19/32 [66]	6 [3]	Round Stainless Steel	161.00
	EZC-AB3-S6-SS	3-4 [76-102]	4-3/4 [121]	1-11/16 [43]	2-23/32 [69]	7 [3]	Square Stainless Steel	196.00
	EZC-AB4-S6-SS	4 [102]	4-3/4 [121]	1-11/16 [43]	2-23/32 [69]	7 [3]	Square Stainless Steel	196.00



EZC2 5" TOP ASSEMBLY ADJUSTABLE FLOOR CLEANOUT WITH DECK PLATE AND EZ1™ TECHNOLOGY



- Zurn EZ1 Floor Cleanout, PVC or ABS solvent weld body, with gas and water tight cleanout plug, stainless steel deck plate and top assembly.
- EZ1 cleanout series is engineered to simplify product installation, comprised of concrete shield, up to 1" [25 mm] of vertical post pour adjustment, pre-packaged shims for tilt correction, and integrated self contained square or round light duty scoriated cover in nickel bronze or stainless steel with rough-in cover for protection during the concrete pour.
- Cleanout is designed in accordance with ASME A112.36.2M.

EZ1™

FLOOR DRAINS

CLEANOUTS

ROOF DRAINS

HYDRANTS

INTERCEPTORS

BASINS & SINKS

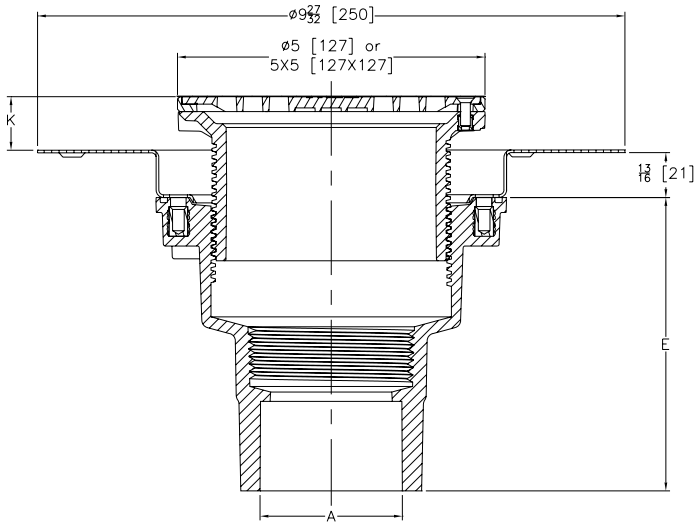
MISCELLANEOUS

FD2 5" TOP ASSEMBLY ADJUSTABLE FLOOR DRAIN WITH DECK PLATE



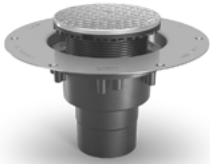
- Zurn FD2 floor and shower drain, PVC or ABS solvent weld body with bottom outlet and 1/2" [13] trap primer connection knock-out plug, stainless steel deck plate, and top assembly.
- FD2 drainage series is available with a square or round light duty strainer in nickel bronze or stainless steel.

BODY TYPE	MODEL NUMBER	DIM. IN INCHES [MM]						LIST PRICE EACH
		A	E	K		APPROX. WT. LB [KG]	STRAINER TYPE	
				MIN	MAX			
PVC	FD2-PV2	2-3 [51-76]	4-15/16 [125]	0	1-7/16 [37]	5 [2]	Round Nickel Bronze	106.00
	FD2-PV3	3-4 [76-102]	3-25/32 [96]	0	1-7/16 [37]	5 [2]	Round Nickel Bronze	106.00
	FD2-PV2-ST	2-3 [51-76]	4-15/16 [125]	7/16 [11]	1-11/16 [43]	6 [3]	Square Nickel Bronze	281.00
	FD2-PV3-ST	3-4 [76-102]	3-25/32 [96]	7/16 [11]	1-11/16 [43]	6 [3]	Square Nickel Bronze	281.00
	FD2-PV2-SS	2-3 [51-76]	4-15/16 [125]	0	1-7/16 [37]	5 [2]	Round Stainless Steel	102.00
	FD2-PV3-SS	3-4 [76-102]	3-25/32 [96]	0	1-7/16 [37]	5 [2]	Round Stainless Steel	102.00
	FD2-PV2-ST-SS	2-3 [51-76]	4-15/16 [125]	7/16 [11]	1-11/16 [43]	6 [3]	Square Stainless Steel	129.00
	FD2-PV3-ST-SS	3-4 [76-102]	3-25/32 [96]	7/16 [11]	1-11/16 [43]	6 [3]	Square Stainless Steel	129.00



SUFFIX	DESCRIPTION	ADD
-CC	Stainless Steel Clamp Collar	28.00
-EF	3/4" [19] Extension Frame	107.00
-FI	Floor Insert (For Round Top Assembly Only)	POA
-TSP	Trap Seal Protection Device (Size Matches Drain Outlet Selected) (See Z1072)	POA
-U	2"-3-1/4" [51-83] High Extension Adapter	42.00
-VP	Vandal-Proof Secured Top	11.00
-Y	Sediment Bucket	29.00

CO2 5" TOP ASSEMBLY ADJUSTABLE FLOOR CLEANOUT WITH DECK PLATE



- Zurn CO2 Floor Cleanout PVC or ABS solvent weld body with gas and watertight cleanout plug, stainless steel deckplate, and top assembly.
- CO2 cleanout series is available with a square or round light duty cover in nickel bronze or stainless steel.
- Cleanout is designed in accordance with ASME A112.36.2M.

NOTES	
EZT™	
FLOOR DRAINS	
CLEANOUTS	
ROOF DRAINS	
HYDRANTS	
INTERCEPTORS	
BASINS & SINKS	
MISCELLANEOUS	

FLOOR DRAINS

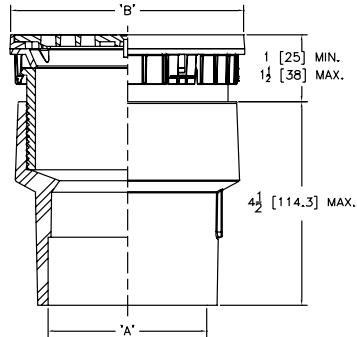
FD 3" X 4" ADJUSTABLE FLOOR DRAIN	18	FD2260 SHOWER STALL DRAIN	29
FD1 ROUND TOPS	19	FD2270 SOLVENT WELD SHOWER STALL DRAIN	29
FD1 SQUARE TOPS	20	FD2275 PVC OR ABS NO-CAULK SHOWER STALL DRAIN	30
FD2 5" TOP ASSEMBLY ADJUSTABLE FLOOR DRAIN WITH DECK PLATE	21	FD2275 BRASS NO-CAULK SHOWER STALL DRAIN	30
FD2210 ADJUSTABLE FLOOR DRAIN	21	FD2380 6" X 6" BELL TRAP DRAIN	31
FD2240 WOOD DECK DRAIN CAST IRON NO-HUB CONNECTION	22	FD2381 9" X 9" BELL TRAP DRAIN	31
FD2283 SQUARE TOP DECORATIVE FLOOR DRAIN	22	FS8 PVC FLOOR SINK	32
FD2330 HEAVY-DUTY ADJUSTABLE FLOOR DRAIN	22	FS12 PVC FLOOR SINK	32
FD2340 MEDIUM-DUTY ADJUSTABLE FLOOR DRAIN	23	FD2375 12" X 12" A.R.E. FLOOR SINK – 6" SUMP DEPTH	33
FD2350 HEAVY-DUTY FLOOR DRAIN	23	FD2376 12" X 12" A.R.E. FLOOR SINK – 8" SUMP DEPTH	33
FD2360 LARGE CAPACITY FLOOR DRAIN	24	FD2377 12" X 12" A.R.E. FLOOR SINK – 10" SUMP DEPTH	34
FD2200 SMALL AREA FLOOR DRAIN PVC OR ABS SOLVENT WELD CONNECTION	24	FD2378 8" X 8" A.R.E. FLOOR SINK – 6" SUMP DEPTH	34
FD2200-NT SMALL AREA FLOOR DRAIN CAST IRON NO-HUB CONNECTION	25	JP2210 PVC OR ABS DRAIN ADAPTOR – USED IN FD2208, FD2209, AND FD2210 MODELS	35
FD2201 GENERAL PURPOSE FLOOR DRAIN 2" X 3" PVC OR ABS CONNECTION	25	JP2211 PVC OR ABS 3" X 4" DRAIN ADAPTOR – USED IN FD2211, FD2212, AND FD2213 MODELS	35
FD2202 GENERAL PURPOSE FLOOR DRAIN 3" X 4" PVC OR ABS CONNECTION	26	JP2321 LOW-PROFILE CAST IRON DRAIN ADAPTOR WITH CLAMPING COLLAR – USED IN MODELS FD2321	36
FD2220 MEDIUM-DUTY FLOOR DRAIN	26	JP2322 LOW-PROFILE CAST IRON DRAIN ADAPTOR – USED IN FD2322 MODELS	36
FD2254 SHOWER DRAIN – ROUND	27		
FD2254 SHOWER DRAIN – SQUARE	28		

FD 3" X 4" ADJUSTABLE FLOOR DRAIN



- Recommended for finished floor areas.
- Designed for foot traffic and light duty applications.
- Consists of a PVC or ABS body with an adjustable nickel head and heel-proof grate.
- Fits over 3" [76 mm] or inside 4" [102 mm] Schedule 40 DWV pipe.
- Slab on grade drain.

BODY TYPE	MODEL NUMBER	DIM. IN INCHES [MM]		APPROX. WT. LB [KG]	BOX QTY.	LIST PRICE EACH
		A	B			
PVC	FD-PV3	3" [76 mm] x 4" [102 mm] Solvent Weld	5-3/16" [132 mm]	4 lb [2 kg]	8	93.00
	FD-PV3-R6	3" [76 mm] x 4" [102 mm] Solvent Weld	6" [152 mm]	5 lb [2 kg]	8	107.00
	FD-PV3-ST	3" [76 mm] x 4" [102 mm] Solvent Weld	5-3/16" [132 mm]	4 lb [2 kg]	8	121.00
	FD-PV3-S6	3" [76 mm] x 4" [102 mm] Solvent Weld	6" [152 mm]	5 lb [2 kg]	8	152.00
	FD-PV3-SS	3" [76 mm] x 4" [102 mm] Solvent Weld	5-3/16" [132 mm]	4 lb [2 kg]	8	89.00
	FD-PV3-R6-SS	3" [76 mm] x 4" [102 mm] Solvent Weld	6" [152 mm]	5 lb [2 kg]	8	107.00
	FD-PV3-ST-SS	3" [76 mm] x 4" [102 mm] Solvent Weld	5-3/16" [132 mm]	4 lb [2 kg]	8	115.00
	FD-PV3-S6-SS	3" [76 mm] x 4" [102 mm] Solvent Weld	6" [152 mm]	5 lb [2 kg]	8	237.00
	FD-PV3-DI	3" [76 mm] x 4" [102 mm] Solvent Weld	5-3/16" [132 mm]	4 lb [2 kg]	8	79.00
ABS	FD-AB3	3" [76 mm] x 4" [102 mm] Solvent Weld	5-3/16" [132 mm]	4 lb [2 kg]	8	89.00
	FD-AB3-R6	3" [76 mm] x 4" [102 mm] Solvent Weld	6" [152 mm]	5 lb [2 kg]	8	107.00
	FD-AB3-ST	3" [76 mm] x 4" [102 mm] Solvent Weld	5-3/16" [132 mm]	4 lb [2 kg]	8	121.00
	FD-AB3-S6	3" [76 mm] x 4" [102 mm] Solvent Weld	6" [152 mm]	5 lb [2 kg]	8	152.00
	FD-AB3-SS	3" [76 mm] x 4" [102 mm] Solvent Weld	5-3/16" [132 mm]	4 lb [2 kg]	8	89.00
	FD-AB3-R6-SS	3" [76 mm] x 4" [102 mm] Solvent Weld	6" [152 mm]	5 lb [2 kg]	8	107.00
	FD-AB3-ST-SS	3" [76 mm] x 4" [102 mm] Solvent Weld	5-3/16" [132 mm]	4 lb [2 kg]	8	115.00
	FD-AB3-S6-SS	3" [76 mm] x 4" [102 mm] Solvent Weld	6" [152 mm]	5 lb [2 kg]	8	152.00
	FD-AB3-DI	3" [76 mm] x 4" [102 mm] Solvent Weld	5-3/16" [132 mm]	4 lb [2 kg]	8	79.00

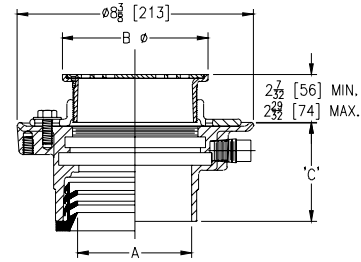


SUFFIX	DESCRIPTION	ADD
-DI	Ductile Iron Top	N/C
-P	1/2" [13 mm] Trap Primer Connection	N/C
-PB	Polished Brass 5" Round	44.00
-VP	Vandal Proof	10.00

FD1 ROUND TOPS



- Recommended for foot traffic and light duty applications.
- Integral 1/2" trap primer with plug.
- Comes with clamp collar for applications where a water proofing membrane is present.



BODY TYPE	MODEL NUMBER	DIM. IN INCHES [MM]			APPROX. WT. LB [KG]	BOX QTY.	LIST PRICE EACH
		A	B	C			
PVC	FD1-PV2	2 [51]	5-3/16 [132]	3 [76]	5 [2]	8	139.00
	FD1-PV2-R6	2 [51]	6 [152]	3 [76]	5 [2]	8	159.00
	FD1-PV2-SS	2 [51]	5-3/16 [132]	3 [76]	5 [2]	8	139.00
	FD1-PV2-R6-SS	2 [51]	6 [152]	3 [76]	5 [2]	8	159.00
	FD1-PV2-DI	2 [51]	5-3/16 [132]	3 [76]	5 [2]	8	126.00
	FD1-PV3	3 [76]	5-3/16 [132]	3-3/4 [95]	5 [2]	8	139.00
	FD1-PV3-R6	3 [76]	6 [152]	3-3/4 [95]	4 [2]	8	159.00
	FD1-PV3-SS	3 [76]	5-3/16 [132]	3-3/4 [95]	4 [2]	8	139.00
	FD1-PV3-R6-SS	3 [76]	6 [152]	3-3/4 [95]	4 [2]	8	159.00
	FD1-PV3-DI	3 [76]	5-3/16 [132]	3-3/4 [95]	4 [2]	8	126.00
	FD1-PV4	4 [102]	5-3/16 [132]	4 [102]	5 [2]	8	139.00
	FD1-PV4-R6	4 [102]	6 [152]	4 [102]	5 [2]	8	159.00
	FD1-PV4-SS	4 [102]	5-3/16 [132]	4 [102]	5 [2]	8	139.00
	FD1-PV4-R6-SS	4 [102]	6 [152]	4 [102]	5 [2]	8	159.00
	FD1-PV4-DI	4 [102]	5-3/16 [132]	4 [102]	5 [2]	8	126.00
ABS	FD1-AB2	2 [51]	5-3/16 [132]	3 [76]	5 [2]	8	139.00
	FD1-AB2-R6	2 [51]	6 [152]	3 [76]	5 [2]	8	159.00
	FD1-AB2-SS	2 [51]	5-3/16 [132]	3 [76]	5 [2]	8	139.00
	FD1-AB2-R6-SS	2 [51]	6 [152]	3 [76]	5 [2]	8	159.00
	FD1-AB2-DI	2 [51]	5-3/16 [132]	3 [76]	5 [2]	8	126.00
	FD1-AB3	3"x4"	5-3/16 [132]	3-3/4 [95]	4 [2]	8	139.00
	FD1-AB3-R6	3"x4"	6 [152]	3-3/4 [95]	4 [2]	8	159.00
	FD1-AB3-SS	3"x4"	5-3/16 [132]	3-3/4 [95]	4 [2]	8	139.00
	FD1-AB3-R6-SS	3"x4"	6 [152]	3-3/4 [95]	4 [2]	8	159.00
	FD1-AB3-DI	3"x4"	5-3/16 [132]	3-3/4 [95]	4 [2]	8	126.00
	FD1-AB4	4 [102]	5-3/16 [132]	4 [102]	5 [2]	8	139.00
	FD1-AB4-R6	4 [102]	6 [152]	4 [102]	5 [2]	8	159.00
	FD1-AB4-SS	4 [102]	5-3/16 [132]	4 [102]	5 [2]	8	139.00
	FD1-AB4-R6-SS	4 [102]	6 [152]	4 [102]	5 [2]	8	159.00
	FD1-AB4-DI	4 [102]	5-3/16 [132]	4 [102]	5 [2]	8	126.00

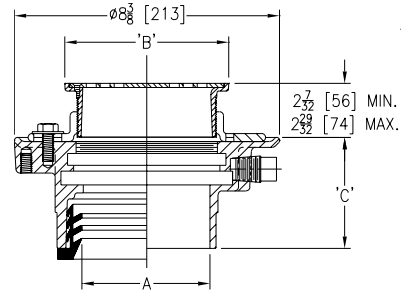
BODY TYPE	MODEL NUMBER	DIM. IN INCHES [MM]			APPROX. WT. LB [KG]	BOX QTY.	LIST PRICE EACH
		A	B	C			
Push On	FD1-PO2	2 [51]	5-3/16 [132]	4 [102]	11 [5]	8	166.00
	FD1-PO2-R6	2 [51]	6 [152]	4 [102]	11 [5]	8	202.00
	FD1-PO2-SS	2 [51]	5-3/16 [132]	4 [102]	11 [5]	8	159.00
	FD1-PO2-R6-SS	2 [51]	6 [152]	4 [102]	11 [5]	8	202.00
	FD1-PO2-DI	2 [51]	5-3/16 [132]	4 [102]	11 [5]	8	177.00
	FD1-PO3	3 [76]	5-3/16 [132]	4 [102]	10 [5]	8	159.00
	FD1-PO3-R6	3 [76]	6 [152]	4 [102]	10 [5]	8	202.00
	FD1-PO3-SS	3 [76]	5-3/16 [132]	4 [102]	10 [5]	8	159.00
	FD1-PO4	4 [102]	6 [152]	4 [102]	10 [5]	8	159.00
	FD1-PO4-R6	4 [102]	5-3/16 [132]	4 [102]	10 [5]	8	202.00
	FD1-PO4-SS	4 [102]	5-3/16 [132]	4 [102]	10 [5]	8	159.00
	FD1-PO4-R6-SS	4 [102]	6 [152]	4 [102]	10 [5]	8	202.00
	FD1-PO4-DI	4 [102]	5-3/16 [132]	4 [102]	10 [5]	8	177.00
	FD1-NH2	2 [51]	6 [152]	4 [102]	11 [5]	8	240.00
	FD1-NH2-R6	2 [51]	5-3/16 [132]	4 [102]	11 [5]	8	286.00
No Hub	FD1-NH2-SS	2 [51]	5-3/16 [132]	4 [102]	11 [5]	8	159.00
	FD1-NH2-R6-SS	2 [51]	6 [152]	4 [102]	11 [5]	8	202.00
	FD1-NH2-DI	2 [51]	5-3/16 [132]	4 [102]	11 [5]	8	177.00
	FD1-NH3	3 [76]	5-3/16 [132]	4 [102]	10 [5]	8	166.00
	FD1-NH3-R6	3 [76]	6 [152]	4 [102]	10 [5]	8	210.00
	FD1-NH3-SS	3 [76]	5-3/16 [132]	4 [102]	10 [5]	8	159.00
	FD1-NH3-R6-SS	3 [76]	6 [152]	4 [102]	10 [5]	8	202.00
	FD1-NH3-DI	3 [76]	5-3/16 [132]	4 [102]	10 [5]	8	177.00
	FD1-NH4	4 [102]	5-3/16 [132]	4 [102]	10 [5]	8	166.00
	FD1-NH4-R6	4 [102]	6 [152]	4 [102]	10 [5]	8	210.00
	FD1-NH4-SS	4 [102]	5-3/16 [132]	4 [102]	10 [5]	8	159.00
	FD1-NH4-R6-SS	4 [102]	6 [152]	4 [102]	10 [5]	8	202.00
	FD1-NH4-DI	4 [102]	5-3/16 [132]	4 [102]	10 [5]	8	177.00

SUFFIX	DESCRIPTION	ADD
-C	Clamp Collar with Hardware	21.00
-VP	Vandal-Proofing Screws	10.00
-Y	Debris Basket	42.00

FD1 SQUARE TOPS



- Recommended for foot traffic and light duty applications
- Integral 1/2" trap primer with plug.
- Comes with clamp collar for applications where a water proofing membrane is present.



BODY TYPE	MODEL NUMBER	DIM. IN INCHES [MM]			APPROX. WT. LB [KG]	BOX QTY.	LIST PRICE EACH
		A	B	C			
PVC	FD1-PV2-ST	2 [51]	5 [127]	3 [76]	5 [2]	8	166.00
	FD1-PV2-S6	2 [51]	6 [152]	3 [76]	5 [2]	8	207.00
	FD1-PV2-ST-SS	2 [51]	5 [127]	3 [76]	5 [2]	8	166.00
	FD1-PV2-S6-SS	2 [51]	6 [152]	3 [76]	5 [2]	8	207.00
	FD1-PV3-ST	3 [76]	5 [127]	3-3/4 [95]	4 [2]	8	166.00
	FD1-PV3-S6	3 [76]	6 [152]	3-3/4 [95]	4 [2]	8	207.00
	FD1-PV3-ST-SS	3 [76]	5 [127]	3-3/4 [95]	4 [2]	8	166.00
	FD1-PV3-S6-SS	3 [76]	6 [152]	3-3/4 [95]	4 [2]	8	207.00
	FD1-PV4-ST	4 [102]	5 [127]	4 [102]	5 [2]	8	166.00
	FD1-PV4-S6	4 [102]	6 [152]	4 [102]	5 [2]	8	207.00
	FD1-PV4-ST-SS	4 [102]	5 [127]	4 [102]	5 [2]	8	166.00
	FD1-PV4-S6-SS	4 [102]	6 [152]	4 [102]	5 [2]	8	207.00
ABS	FD1-AB2-ST	2 [51]	5 [127]	3 [76]	5 [2]	8	166.00
	FD1-AB2-S6	2 [51]	6 [152]	3 [76]	5 [2]	8	207.00
	FD1-AB2-ST-SS	2 [51]	5 [127]	3 [76]	5 [2]	8	166.00
	FD1-AB2-S6-SS	2 [51]	6 [152]	3 [76]	5 [2]	8	207.00
	FD1-AB3-ST	3 [76]	5 [127]	3-3/4 [95]	4 [2]	8	166.00
	FD1-AB3-S6	3 [76]	6 [152]	3-3/4 [95]	4 [2]	8	207.00
	FD1-AB3-ST-SS	3 [76]	5 [127]	3-3/4 [95]	4 [2]	8	173.00
	FD1-AB3-S6-SS	3 [76]	6 [152]	3-3/4 [95]	4 [2]	8	207.00
	FD1-AB4-ST	4 [102]	5 [127]	4 [102]	5 [2]	8	166.00
	FD1-AB4-S6	4 [102]	6 [152]	4 [102]	5 [2]	8	207.00
	FD1-AB4-ST-SS	4 [102]	5 [127]	4 [102]	5 [2]	8	166.00
	FD1-AB4-S6-SS	4 [102]	6 [152]	4 [102]	5 [2]	8	207.00

BODY TYPE	MODEL NUMBER	DIM. IN INCHES [MM]			APPROX. WT. LB [KG]	BOX QTY.	LIST PRICE EACH
		A	B	C			
Push On	FD1-PO2-ST	2 [51]	5 [127]	4 [102]	11 [5]	8	185.00
	FD1-PO2-S6	2 [51]	6 [152]	4 [102]	11 [5]	8	250.00
	FD1-PO2-ST-SS	2 [51]	5 [127]	4 [102]	11 [5]	8	185.00
	FD1-PO2-S6-SS	2 [51]	6 [152]	4 [102]	11 [5]	8	250.00
	FD1-PO3-ST	3 [76]	5 [127]	4 [102]	10 [5]	8	193.00
	FD1-PO3-S6	3 [76]	6 [152]	4 [102]	10 [5]	8	250.00
	FD1-PO3-ST-SS	3 [76]	5 [127]	4 [102]	10 [5]	8	185.00
	FD1-PO3-S6-SS	3 [76]	6 [152]	4 [102]	10 [5]	8	250.00
	FD1-PO4-ST	4 [102]	5 [127]	4 [102]	10 [5]	8	185.00
	FD1-PO4-S6	4 [102]	6 [152]	4 [102]	10 [5]	8	250.00
	FD1-PO4-ST-SS	4 [102]	5 [127]	4 [102]	10 [5]	8	185.00
	FD1-PO4-S6-SS	4 [102]	6 [152]	4 [102]	10 [5]	8	250.00
No Hub	FD1-NH2-ST	2 [51]	5 [127]	4 [102]	11 [5]	8	193.00
	FD1-NH2-S6	2 [51]	6 [152]	4 [102]	11 [5]	8	259.00
	FD1-NH2-ST-SS	2 [51]	5 [127]	4 [102]	11 [5]	8	185.00
	FD1-NH2-S6-SS	2 [51]	6 [152]	4 [102]	11 [5]	8	250.00
	FD1-NH3-ST	3 [76]	5 [127]	4 [102]	10 [5]	8	193.00
	FD1-NH3-S6	3 [76]	6 [152]	4 [102]	10 [5]	8	250.00
	FD1-NH3-ST-SS	3 [76]	5 [127]	4 [102]	10 [5]	8	185.00
	FD1-NH3-S6-SS	3 [76]	6 [152]	4 [102]	10 [5]	8	250.00
	FD1-NH4-ST	4 [102]	5 [127]	4 [102]	10 [5]	8	255.00
	FD1-NH4-S6	4 [102]	6 [152]	4 [102]	10 [5]	8	250.00
	FD1-NH4-ST-SS	4 [102]	5 [127]	4 [102]	10 [5]	8	185.00
	FD1-NH4-S6-SS	4 [102]	6 [152]	4 [102]	10 [5]	8	250.00

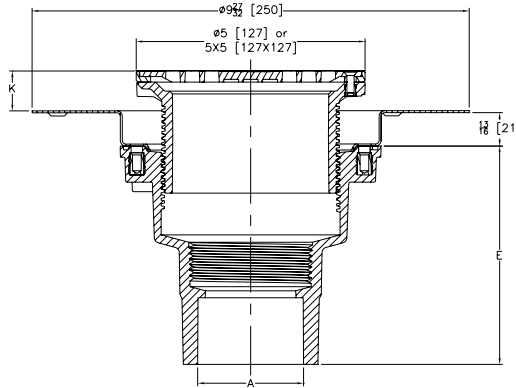
SUFFIX	DESCRIPTION	ADD
-C	Clamp Collar with Hardware	21.00
-VP	Vandal-Proofing Screws	10.00
-Y	Debris Basket	42.00

FD2 5" TOP ASSEMBLY ADJUSTABLE FLOOR DRAIN WITH DECK PLATE



- Zurn FD2 floor and shower drain, PVC solvent weld body with bottom outlet and 1/2" [13] trap primer connection knock-out plug, stainless steel deck plate, and top assembly.
- FD2 drainage series is available with a square or round light duty strainer in nickel bronze or stainless steel.

BODY TYPE	MODEL NUMBER	DIM. IN INCHES [MM]				APPROX. WT. LB [KG]	STRAINER TYPE	LIST PRICE EACH
		A	E	K				
				MIN	MAX			
PVC	FD2-PV2	2-3 [51-76]	4-15/16 [125]	0	1-7/16 [37]	5 [2]	Round Nickel Bronze	106.00
	FD2-PV3	3-4 [76-102]	3-25/32 [96]	0	1-7/16 [37]	5 [2]	Round Nickel Bronze	106.00
	FD2-PV2-ST	2-3 [51-76]	4-15/16 [125]	7/16 [11]	1-11/16 [43]	6 [3]	Square Nickel Bronze	281.00
	FD2-PV3-ST	3-4 [76-102]	3-25/32 [96]	7/16 [11]	1-11/16 [43]	6 [3]	Square Nickel Bronze	281.00
	FD2-PV2-SS	2-3 [51-76]	4-15/16 [125]	0	1-7/16 [37]	5 [2]	Round Stainless Steel	102.00
	FD2-PV3-SS	3-4 [76-102]	3-25/32 [96]	0	1-7/16 [37]	5 [2]	Round Stainless Steel	102.00
	FD2-PV2-ST-SS	2-3 [51-76]	4-15/16 [125]	7/16 [11]	1-11/16 [43]	6 [3]	Square Stainless Steel	129.00
	FD2-PV3-ST-SS	3-4 [76-102]	3-25/32 [96]	7/16 [11]	1-11/16 [43]	6 [3]	Square Stainless Steel	129.00



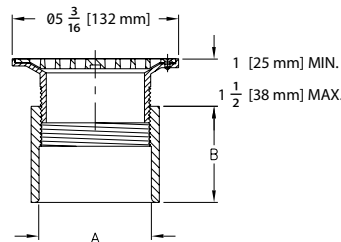
SUFFIX	DESCRIPTION	ADD
-CC	Stainless Steel Clamp Collar	28.00
-EF	3/4" [19] Extension Frame	107.00
-FI	Floor Insert (For Round Top Assembly Only)	POA
-TSP	Trap Seal Protection Device (Size Matches Drain Outlet Selected) (See Z1072)	POA
-U	2"-3-1/4" [51-83] High Extension Adapter	42.00
-VP	Vandal-Proof Secured Top	11.00
-Y	Sediment Bucket	29.00

FD2210 ADJUSTABLE FLOOR DRAIN



- Recommended for finished floor areas.
- Designed for foot traffic and light duty applications.
- Consists of a PVC or ABS body with an adjustable nickel head and heel-proof grate.

BODY TYPE	MODEL NUMBER	DIM. IN INCHES [MM]		APPROX. WT. LB [KG]	BOX QTY.	LIST PRICE EACH
		A	B			
PVC	FD2210-PV2	2" [51 mm] Solvent Weld	1-7/8" [48 mm]	4 lb [2 kg]	8	84.00
	FD2210-PV3	3" [76 mm] Solvent Weld	3-5/16" [84 mm]	4 lb [2 kg]	8	98.00
	FD2210-PV4	4" [102 mm] Solvent Weld	3-5/16" [84 mm]	4 lb [2 kg]	8	112.00
ABS	FD2210-AB2	2" [51 mm] Solvent Weld	1-7/8" [48 mm]	4 lb [2 kg]	8	84.00
	FD2210-AB3	3" [76 mm] Solvent Weld	3-5/16" [84 mm]	4 lb [2 kg]	8	98.00
	FD2210-AB4	4" [102 mm] Solvent Weld	3-5/16" [84 mm]	4 lb [2 kg]	8	107.00



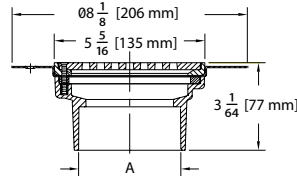
SUFFIX	DESCRIPTION	ADD
-CP	Chrome-Plated Top	35.00
-PB	Polished Brass (2" and 4" Only)	41.00
-VP	Vandal Proof	10.00

FD2240 WOOD DECK DRAIN CAST IRON NO-HUB CONNECTION



- Recommended for foot traffic and light carts.
- Unique design allows for installation in wood decks where flexible sheet flooring is used.
- Furnished with cast iron body with a steel anchor flange.

CONNECTION TYPE	MODEL NUMBER	DIM. IN INCHES [MM]		APPROX. WT. LB [KG]	BOX QTY.	LIST PRICE EACH
		A				
Cast Iron Frame and Grate						
No-Hub	FD2240-NH3	3" [76 mm]		4 lb [2 kg]	4	146.00
	FD2240-NH4	4" [102 mm]		4 lb [2 kg]	4	146.00
Nickel Frame and Grate						
No-Hub	FD2240-NH3-NT	3" [76 mm]		4 lb [2 kg]	4	177.00
	FD2240-NH4-NT	4" [102 mm]		4 lb [2 kg]	4	177.00



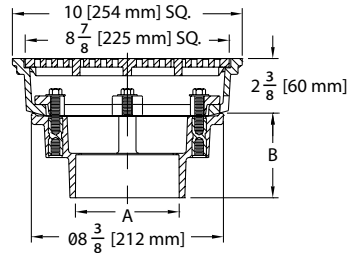
SUFFIX	DESCRIPTION	ADD
-VP	Vandal Proof	10.00

FD2283 SQUARE TOP DECORATIVE FLOOR DRAIN



- Recommended for pool areas, prom decks, patios, and light traffic areas.
- PVC body and rotatable, PVC frame.
- Clamps and PVC decorative heel-proof grate.

BODY TYPE	MODEL NUMBER	DIM. IN INCHES [MM]		APPROX. WT. LB [KG]	BOX QTY.	LIST PRICE EACH
		A	B			
PVC	FD2283-PV2	2" [51 mm]	2-31/32" [76 mm]	4 lb [2 kg]	1	171.00
	FD2283-PV3	3" [76 mm]	3-11/16" [94 mm]	4 lb [2 kg]	1	171.00
	FD2283-PV4	4" [102 mm]	3-13/16" [97 mm]	4 lb [2 kg]	1	171.00



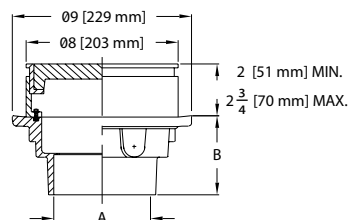
SUFFIX	DESCRIPTION	ADD
-P	1/2" [13 mm] Trap Primer Connection	N/C
-VP	Vandal Proof	10.00

FD2330 HEAVY-DUTY ADJUSTABLE FLOOR DRAIN



- Recommended for heavy vehicles or industrial applications
- Consists of PVC or ABS body with steel-threaded inserts
- Complete with a cast iron clamp collar, leveling frame and heavy-duty grate

BODY TYPE	PART NUMBER	DIM. IN INCHES [MM]		APPROX. WT. LB [KG]	LIST PRICE EACH
		A	B		
PVC	FD2330-PV2	2" [50 mm] PVC Hub	2-31/32" [76 mm]	5 lb [3 mm]	183.00
	FD2330-PV3	3" [75 mm] PVC Hub	3-11/16" [94 mm]	5 lb [3 mm]	183.00
	FD2330-PV4	4" [100 mm] PVC Hub	3-13/16" [97 mm]	5 lb [3 mm]	183.00
ABS	FD2330-AB2	2" [50 mm] ABS Hub	2-31/32" [76 mm]	5 lb [3 mm]	183.00
	FD2330-AB3	3" [75 mm] ABS Hub	3-11/16" [94 mm]	5 lb [3 mm]	183.00
	FD2330-AB4	4" [100 mm] ABS Hub	3-13/16" [97 mm]	5 lb [3 mm]	183.00

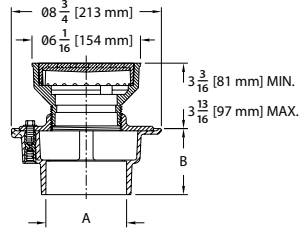


SUFFIX	DESCRIPTION	ADD
-P	1/2" [13 mm] Trap Primer Connection	N/C
-Y	Sediment Bucket	59.00

FD2340 MEDIUM-DUTY ADJUSTABLE FLOOR DRAIN



- Recommended for moderate traffic areas.
- The square hole pattern grate is ideal for small wheel traffic, wheelchairs or bicycles.
- Drain is furnished with a PVC or ABS body with steel-threaded inserts.
- Adjustable head and grate are constructed of cast iron.



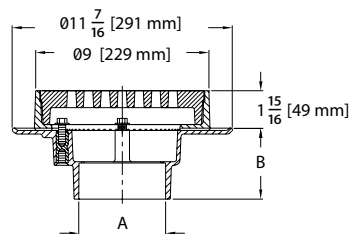
BODY TYPE	MODEL NUMBER	DIM. IN INCHES [MM]		APPROX. WT. LB [KG]	BOX QTY.	LIST PRICE EACH
		A	B			
PVC	FD2340-PV2	2" [51 mm]	2-31/32" [76 mm]	5 lb [3 kg]	1	156.00
	FD2340-PV3	3" [76 mm]	3-11/16" [94 mm]	5 lb [3 kg]	1	156.00
	FD2340-PV4	4" [102 mm]	3-13/16" [97 mm]	5 lb [3 kg]	1	156.00
ABS	FD2340-AB2	2" [51 mm]	2-31/32" [76 mm]	5 lb [3 kg]	1	156.00
	FD2340-AB3	3" [76 mm]	3-11/16" [94 mm]	5 lb [3 kg]	1	156.00
	FD2340-AB4	4" [102 mm]	3-13/16" [97 mm]	5 lb [3 kg]	1	156.00

SUFFIX	DESCRIPTION	ADD
-P	1/2" [13 mm] Trap Primer Connection	N/C
-Y	Sediment Bucket	59.00

FD2350 HEAVY-DUTY FLOOR DRAIN



- Recommended for unfinished areas.
- Designed for heavy vehicle traffic or industrial applications.
- The PVC and ABS wide-flange body has steel-threaded inserts for attaching the frame.
- The cast iron clamping frame and heavy-duty grate are designed for weepage.



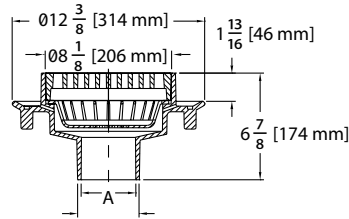
BODY TYPE	MODEL NUMBER	DIM. IN INCHES [MM]		APPROX. WT. LB [KG]	BOX QTY.	LIST PRICE EACH
		A	B			
PVC	FD2350-PV2	2" [51 mm]	2-31/32" [76 mm]	5 lb [3 kg]	1	127.00
	FD2350-PV3	3" [76 mm]	3-11/16" [94 mm]	5 lb [3 kg]	1	127.00
	FD2350-PV4	4" [102 mm]	3-13/16" [97 mm]	5 lb [3 kg]	1	127.00
ABS	FD2350-AB2	2" [51 mm]	2-31/32" [76 mm]	5 lb [3 kg]	1	127.00
	FD2350-AB3	3" [76 mm]	3-11/16" [94 mm]	5 lb [3 kg]	1	127.00
	FD2350-AB4	4" [102 mm]	3-13/16" [97 mm]	5 lb [3 kg]	1	127.00

SUFFIX	DESCRIPTION	ADD
-P	1/2" [13 mm] Trap Primer Connection	N/C
-S	Secondary Strainer	18.00
-VP	Vandal Proof	10.00
-Y	Sediment Bucket	59.00

FD2360 LARGE CAPACITY FLOOR DRAIN



- Low profile design with ABS or PVC body.
- Integral anchor flange, sediment bucket, and deep grate.
- For use at grade or above grade.
- Outlet connection fits over 3" [76 mm] and inside 4" [102 mm] Schedule 40 DWV pipe.



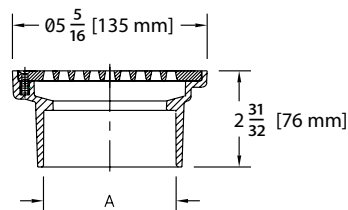
BODY TYPE	MODEL NUMBER	DIM. IN INCHES [MM]		APPROX. WT. LB [KG]	BOX QTY.	LIST PRICE EACH
		A				
PVC	FD2360-PVC	3" [76 mm] x 4" [102 mm] Solvent Weld		5 lb [3 kg]	1	159.00
ABS	FD2360-ABS	3" [76 mm] x 4" [102 mm] Solvent Weld		5 lb [3 kg]	1	159.00

FD2200 SMALL AREA FLOOR DRAIN PVC OR ABS SOLVENT WELD CONNECTION



- Constructed of heavy walled PVC or ABS body. Complete with galvanized steel threaded inserts to accept grate securing bolts.
- Dura-Coated cast iron, heel-proof grate.
- Optional heel-proof nickel strainer.

BODY TYPE	MODEL NUMBER	DIM. IN INCHES [MM]		APPROX. WT. LB [KG]	BOX QTY.	LIST PRICE EACH
		A				
Cast Iron Strainer						
PVC	FD2200-PV2	2" [51 mm]		4 lb [2 kg]	8	33.00
	FD2200-PV3	3" [76 mm]		4 lb [2 kg]	8	42.00
	FD2200-PV4	4" [102 mm]		4 lb [2 kg]	8	52.00
ABS	FD2200-AB2	2" [51 mm]		4 lb [2 kg]	8	33.00
	FD2200-AB3	3" [76 mm]		4 lb [2 kg]	8	42.00
	FD2200-AB4	4" [102 mm]		4 lb [2 kg]	8	52.00
Nickel Strainer						
PVC	FD2200-PV2-NT	2" [51 mm]		4 lb [2 kg]	8	56.00
	FD2200-PV3-NT	3" [76 mm]		4 lb [2 kg]	8	62.00
	FD2200-PV4-NT	4" [102 mm]		4 lb [2 kg]	8	68.00
ABS	FD2200-AB2-NT	2" [51 mm]		4 lb [2 kg]	8	56.00
	FD2200-AB3-NT	3" [76 mm]		4 lb [2 kg]	8	62.00
	FD2200-AB4-NT	4" [102 mm]		4 lb [2 kg]	8	71.00



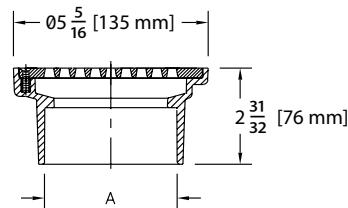
SUFFIX	DESCRIPTION	ADD
-VP	Vandal Proof	10.00

FD2200-NT SMALL AREA FLOOR DRAIN CAST IRON NO-HUB CONNECTION



- Dura-Coated cast iron, heel-proof grate.
- Optional heel-proof nickel strainer.

CONNECTION TYPE	MODEL NUMBER	DIM. IN INCHES [MM]	APPROX. WT. LB [KG]	BOX QTY.	LIST PRICE EACH
		A			
Cast Iron Strainer					
No-Hub	FD2200-NH3	3" [76 mm]	4 lb [2 kg]	8	39.00
	FD2200-NH4	4" [102 mm]	4 lb [2 kg]	8	49.00
Nickel Strainer					
No-Hub	FD2200-NH3-NT	3" [76 mm]	4 lb [2 kg]	8	64.00
	FD2200-NH4-NT	4" [102 mm]	4 lb [2 kg]	8	75.00



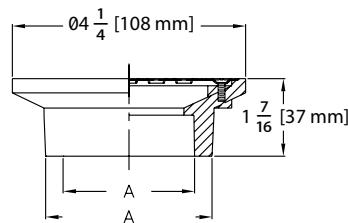
SUFFIX	DESCRIPTION	ADD
-VP	Vandal Proof	10.00

FD2201 GENERAL PURPOSE FLOOR DRAIN 2" X 3" PVC OR ABS CONNECTION



- Constructed of heavy walled PVC or ABS body. Each body is furnished with brass threaded inserts to accept grate securing screws.
- Fits over 2" [51 mm] and inside 3" [76 mm] Schedule 40 DWV pipe.
- -FMT version standard with Full Metal Top strainer completely covers plastic edge.

BODY TYPE	MODEL NUMBER	DIM. IN INCHES [MM]	APPROX. WT. LB [KG]	BOX QTY.	LIST PRICE EACH
		A			
PVC	FD2201-PVC	2" [51 mm] x 3" [76 mm] Solvent Weld	4 lb [2 kg]	20	17.00
ABS	FD2201-ABS	2" [51 mm] x 3" [76 mm] Solvent Weld	4 lb [2 kg]	20	17.00
PVC	FD2201-PVC-FMT	2" [51 mm] x 3" [76 mm] Solvent Weld	4 lb [2 kg]	20	17.00
ABS	FD2201-ABS-FMT	2" [51 mm] x 3" [76 mm] Solvent Weld	4 lb [2 kg]	20	17.00



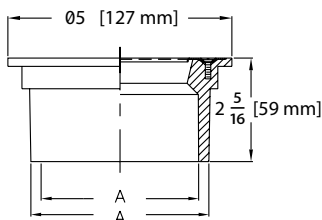
SUFFIX	DESCRIPTION	ADD
-VP	Vandal Proof	10.00

FD2202 GENERAL PURPOSE FLOOR DRAIN 3" X 4" PVC OR ABS CONNECTION



- Constructed of a heavy walled ABS or PVC body complete with brass threaded inserts to accept securing screws.
- Fits over 3" [76 mm] and inside 4" [102 mm] Schedule 40 DWV pipe.
- Stainless steel strainer.

BODY TYPE	MODEL NUMBER	DIM. IN INCHES [MM]	APPROX. WT. LB [KG]	BOX QTY.	LIST PRICE EACH
		A			
PVC	FD2202-PVC	3" [76 mm] x 4" [102 mm] Solvent Weld	4 lb [2 kg]	10	28.00
ABS	FD2202-ABS	3" [76 mm] x 4" [102 mm] Solvent Weld	4 lb [2 kg]	10	28.00



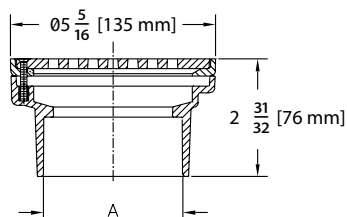
SUFFIX	DESCRIPTION	ADD
-VP	Vandal Proof	10.00

FD2220 MEDIUM-DUTY FLOOR DRAIN



- Recommended for light vehicle traffic and residential applications.
- Furnished with a PVC or ABS body and cast iron frame and grate.
- Hub connection.

BODY TYPE	MODEL NUMBER	DIM. IN INCHES [MM]		APPROX. WT. LB [KG]	BOX QTY.	LIST PRICE EACH
		A				
Cast Iron Strainer						
PVC	FD2220-PV2	2" [51 mm]		4 lb [2 kg]	8	45.00
	FD2220-PV3	3" [76 mm]		4 lb [2 kg]	8	50.00
	FD2220-PV4	4" [102 mm]		4 lb [2 kg]	8	62.00
ABS	FD2220-AB2	2" [51 mm]		4 lb [2 kg]	8	42.00
	FD2220-AB3	3" [76 mm]		4 lb [2 kg]	8	53.00
	FD2220-AB4	4" [102 mm]		4 lb [2 kg]	8	62.00
Nickel Strainer						
PVC	FD2220-PV2-NT	2" [51 mm]		4 lb [2 kg]	8	79.00
	FD2220-PV3-NT	3" [76 mm]		4 lb [2 kg]	8	90.00
	FD2220-PV4-NT	4" [102 mm]		4 lb [2 kg]	8	99.00
ABS	FD2220-AB2-NT	2" [51 mm]		4 lb [2 kg]	8	79.00
	FD2220-AB3-NT	3" [76 mm]		4 lb [2 kg]	8	87.00
	FD2220-AB4-NT	4" [102 mm]		4 lb [2 kg]	8	99.00



SUFFIX	DESCRIPTION	ADD
-VP	Vandal Proof	10.00

FD2254 SHOWER DRAIN – ROUND



FD2254-PV2



FD2254-NH2



FD2254-FMT



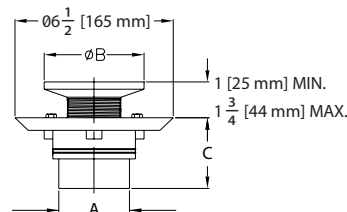
FD2254-PV2-R5



- Recommended in showers where a membrane is used.
- Adjustable head to meet finished floor elevations.
- Beveled clamping collar provides easier subfloor installation.

CONNECTION TYPE	MODEL NUMBER	DIM. IN INCHES [MM]			APPROX. WT. LB [KG]	BOX QTY.	LIST PRICE EACH
		A	B	C			
4" [102 mm] Round Chrome-Plated Strainer							
Solvent Weld	FD2254-PV2	2" [51 mm] x 3" [76 mm] PVC Body	4-1/4" [108 mm]	2-7/8" [73 mm]	4 lb [2 kg]	12	24.00
	FD2254-AB2	2" [51 mm] x 3" [76 mm] ABS Body	4-1/4" [108 mm]	2-7/8" [73 mm]	4 lb [2 kg]	12	24.00
4" [102 mm] Round Full Metal Top-Stainless Steel Strainer							
No-Hub	FD2254-NH2	2" [51 mm] No-Hub	4-1/4" [108 mm]	2-7/8" [73 mm]	4 lb [2 kg]	12	90.00
Push-On	FD2254-PO2	2" [51 mm] Push-On	4-1/4" [108 mm]	2-7/8" [73 mm]	4 lb [2 kg]	12	95.00
Caulk	FD2254-IC2	2" [51 mm] Inside Caulk	4-1/4" [108 mm]	2-7/8" [73 mm]	4 lb [2 kg]	12	90.00
IPS	FD2254-IP2	2" [51 mm] IPS	4-1/4" [108 mm]	2-7/8" [73 mm]	4 lb [2 kg]	12	90.00
OPTIONS							
SUFFIX	DESCRIPTION						ADD
-CP	Chrome-Plated (For PV2 and AB2 Only)						40.00
-CS	Chrome-Plated Head with Stainless Steel Strainer						44.00
-PB	Polished Brass						41.00

CONNECTION TYPE	MODEL NUMBER	DIM. IN INCHES [MM]			APPROX. WT. LBS. [KG]	BOX QTY.	LIST PRICE EACH
		A	B	C			
4" [102 mm] Round Full Metal Top - Stainless Steel Strainer							
Solvent Weld	FD2254-PV2-FMT	2" [51 mm] x 3" [76 mm] PVC Body	4-1/4" [108 mm]	2-7/8" [73 mm]	4 lb [2 kg]	12	42.00
	FD2254-AB2-FMT	2" [51 mm] x 3" [76 mm] ABS Body	4-1/4" [108 mm]	2-7/8" [73 mm]	4 lb [2 kg]	12	42.00
5" [127 mm] Round Nickel Head Assembly							
PVC	FD2254-PV2-R5	2" [51 mm] x 3" [76 mm] Solvent Weld	5-3/16" [132 mm]	2-7/8" [73 mm]	4 lb [2 kg]	12	98.00
ABS	FD2254-AB2-R5	2" [51 mm] x 3" [76 mm] Solvent Weld	5-3/16" [132 mm]	2-7/8" [73 mm]	4 lb [2 kg]	12	98.00
No-Hub	FD2254-NH2-R5	2" [51 mm]	5-3/16" [132 mm]	3-3/4" [95 mm]	4 lb [2 kg]	12	123.00
Push-On	FD2254-PO2-R5	2" [51 mm]	5-3/16" [132 mm]	3-3/4" [95 mm]	4 lb [2 kg]	12	126.00
Caulk	FD2254-IC2-R5	2" [51 mm]	5-3/16" [132 mm]	3-3/4" [95 mm]	4 lb [2 kg]	12	123.00
IPS	FD2254-IP2-R5	2" [51 mm]	5-3/16" [132 mm]	3-3/4" [95 mm]	4 lb [2 kg]	12	123.00
OPTIONS							
SUFFIX	DESCRIPTION						ADD
-R5-CP	Chrome-Plated 5" Round						40.00
-R5-PB	Polished Brass 5" Round						44.00



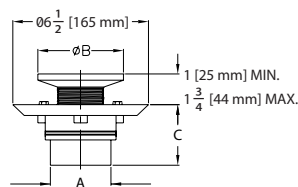
FD2254

For additional product information, please visit www.zurn.ca
Patent zurn.ca/patents

FD2254 SHOWER DRAIN – SQUARE

- Recommended in showers where a membrane is used.
- Adjustable head to meet finished floor elevations.
- Beveled clamping collar provides easier subfloor installation.

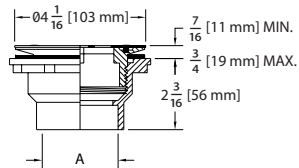
CONNECTION TYPE	MODEL NUMBER	DIM. IN INCHES [MM]			APPROX. WT. LB [KG]	BOX QTY.	LIST PRICE EACH
		A	B	C			
4" [102 mm] Square Polished Brass Head Assembly							
Solvent Weld	FD2254-PV2-BS4	2" [51 mm] x 3" [76 mm] PVC	4-3/16" [114 mm]	2-7/8" [73 mm]	4 lb [2 kg]	12	99.00
	FD2254-AB2-BS4	2" [51 mm] x 3" [76 mm] ABS	4-3/16" [114 mm]	2-7/8" [73 mm]	4 lb [2 kg]	12	99.00
No-Hub	FD2254-NH2-BS4	2" [51 mm]	4-3/16" [114 mm]	3-3/4" [95 mm]	4 lb [2 kg]	12	127.00
Push-On	FD2254-PO2-BS4	2" [51 mm]	4-3/16" [114 mm]	3-3/4" [95 mm]	4 lb [2 kg]	12	127.00
Caulk	FD2254-IC2-BS4	2" [51 mm]	4-3/16" [114 mm]	3-3/4" [95 mm]	4 lb [2 kg]	12	123.00
IPS	FD2254-IP2-BS4	2" [51 mm]	4-3/16" [114 mm]	3-3/4" [95 mm]	4 lb [2 kg]	12	123.00
4" [102 mm] Square Chrome-Plated Brass Head Assembly							
Solvent Weld	FD2254-PV2-CS4	2" [51 mm] x 3" [76 mm] PVC	4-3/16" [114 mm]	2-7/8" [73 mm]	4 lb [2 kg]	12	106.00
	FD2254-AB2-CS4	2" [51 mm] x 3" [76 mm] ABS	4-3/16" [114 mm]	2-7/8" [73 mm]	4 lb [2 kg]	12	106.00
No-Hub	FD2254-NH2-CS4	2" [51 mm]	4-3/16" [114 mm]	3-3/4" [95 mm]	4 lb [2 kg]	12	105.00
Push-On	FD2254-PO2-CS4	2" [51 mm]	4-3/16" [114 mm]	3-3/4" [95 mm]	4 lb [2 kg]	12	105.00
Caulk	FD2254-IC2-CS4	2" [51 mm]	4-3/16" [114 mm]	3-3/4" [95 mm]	4 lb [2 kg]	12	105.00
IPS	FD2254-IP2-CS4	2" [51 mm]	4-3/16" [114 mm]	3-3/4" [95 mm]	4 lb [2 kg]	12	105.00
5" [127 mm] Square Nickel Head Assembly							
Solvent Weld	FD2254-PV2-S5	2" [51 mm] x 3" [76 mm] PVC	5" [127 mm]	2-7/8" [73 mm]	4 lb [2 kg]	12	116.00
	FD2254-AB2-S5	2" [51 mm] x 3" [76 mm] ABS	5" [127 mm]	2-7/8" [73 mm]	4 lb [2 kg]	12	116.00
No-Hub	FD2254-NH2-S5	2" [51 mm]	5" [127 mm]	3-3/4" [95 mm]	4 lb [2 kg]	12	131.00
Push-On	FD2254-PO2-S5	2" [51 mm]	5" [127 mm]	3-3/4" [95 mm]	4 lb [2 kg]	12	132.00
Caulk	FD2254-IC2-S5	2" [51 mm]	5" [127 mm]	3-3/4" [95 mm]	4 lb [2 kg]	12	126.00
IPS	FD2254-IP2-S5	2" [51 mm]	5" [127 mm]	3-3/4" [95 mm]	4 lb [2 kg]	12	126.00
OPTIONS							
SUFFIX	DESCRIPTION						ADD
-CP	Chrome-Plated 5" Square						40.00
-PB	Polished Brass 5" Square						44.00



FD2260 SHOWER STALL DRAIN



- Recommended for molded shower stalls where the drain body is installed on the pipe before the shower unit is permanently placed.
- Drain is furnished with a stainless steel strainer.



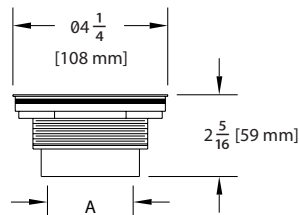
SUFFIX	DESCRIPTION	ADD
-VP	Vandal Proof	10.00

BODY TYPE	MODEL NUMBER	DIM. IN INCHES [MM]	APPROX. WT. LB [KG]	BOX QTY.	LIST PRICE EACH
		A			
Stainless Steel Strainer					
PVC	FD2260-PV2	2" [51 mm] Solvent Weld	4 lb [2 kg]	20	24.00
ABS	FD2260-AB2	2" [51 mm] Solvent Weld	4 lb [2 kg]	20	24.00

FD2270 SOLVENT WELD SHOWER STALL DRAIN



- Recommended for molded shower stalls where the drain is installed on the shower unit before it is placed.
- Drain is furnished with a stainless steel strainer and securing nut.

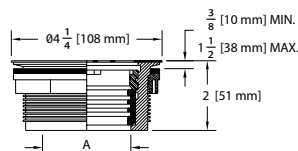


BODY TYPE	MODEL NUMBER	DIM. IN INCHES [MM]	APPROX. WT. LB [KG]	BOX QTY.	LIST PRICE EACH
		A			
Stainless Steel Strainer					
PVC	FD2270-PV2	2" [51 mm] Solvent Weld	4 lb [2 kg]	20	24.00
ABS	FD2270-AB2	2" [51 mm] Solvent Weld	4 lb [2 kg]	20	24.00

FD2275 PVC OR ABS NO-CAULK SHOWER STALL DRAIN



- Recommended for molded shower stalls where the drain is installed on the shower unit before it is placed.
- Drain is furnished with a stainless steel strainer and securing nut.

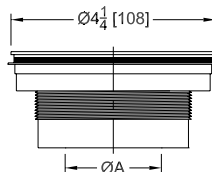


BODY TYPE	MODEL NUMBER	DIM. IN INCHES [MM]	APPROX. WT. LB [KG]	BOX QTY.	LIST PRICE EACH
		A			
Stainless Steel Strainer					
PVC	FD2275-PV2	2" [51 mm]	4 lb [2 kg]	20	24.00
ABS	FD2275-AB2	2" [51 mm]	4 lb [2 kg]	20	24.00

FD2275 BRASS NO-CAULK SHOWER STALL DRAIN



- Recommended for molded shower stalls where the drain is installed on the shower unit before it is placed.
- Drain is furnished with a stainless steel strainer and securing nut.



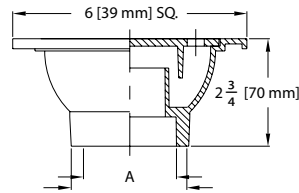
CONNECTION TYPE	MODEL NUMBER	DIM. IN INCHES [MM]	APPROX. WT. LB [KG]	BOX QTY.	LIST PRICE EACH
		A			
Stainless Steel Strainer					
No-Caulk	FD2275-BR2	2" [51 mm]	4 lb [2 kg]	20	49.00

FD2380 6" X 6" BELL TRAP DRAIN



- Recommended for unfinished areas; ideal for garage and basement.
- The PVC or ABS drain body is designed to fit over 2" [51 mm] or inside 3" [76 mm] Schedule 40 DWV pipe.

CONNECTION TYPE	MODEL NUMBER	DIM. IN INCHES [MM]	APPROX. WT. LB [KG]	BOX QTY.	LIST PRICE EACH
		A			
PVC	FD2380-PVC	2" [51 mm] x 3" [76 mm] Solvent Weld	4 lb [2 kg]	10	27.00

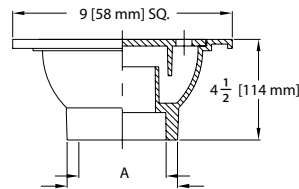


FD2381 9" X 9" BELL TRAP DRAIN



- Recommended for unfinished areas, ideal for the garage and basement
- PVC or ABS drain body is designed to fit over 3" or inside 4" sched. 40 DWV pipe

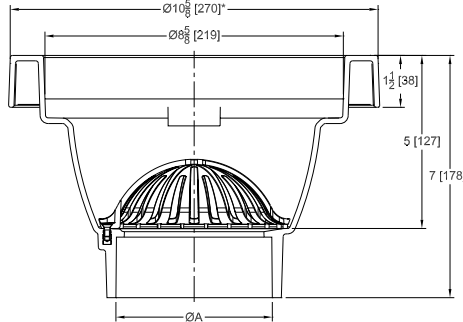
BODY TYPE	PART NUMBER	DIM. IN INCHES [MM]		APPROX. WT. LB [KG]	LIST PRICE EACH
		A			
PVC	FD2381-PVC	3" [76 mm] x 4" [102 mm] PVC Solvent Weld		4 lb [2 mm]	35.00
ABS	FD2381-ABS	3" [76 mm] x 4" [102 mm] ABS Solvent Weld		4 lb [2 mm]	35.00



FS8 PVC FLOOR SINK



- Dome strainer comes secured to prevent debris from clogging pipe lines and prevents misplacement
- 1-1/2" lip allows for installation 1" above finished floor to protect against indirect waste if required by code
- Optional plastic sediment bucket is designed to fit with the dome strainer in place adding extra drain line protection



SUFFIX	DESCRIPTION	ADD
-F	Full Grate	61.00
-H	1/2 Grate	49.00
-NF	Full Nickel Bronze Grate* (light duty)	366.00
-NH	Half Nickel Bronze Grate*	239.00
-SF	Stainless Steel Full Grate*	465.00
-SH	Stainless Steel Half Grate*	311.00
-TSP	ZShield Z1072	POA
-Y	Plastic Sediment Bucket	17.00
-YS	Stainless Steel Mesh Bucket	43.00

*Add 5/8 [16] to diameter and 7/16 [11] to overall height



-F Full Grate

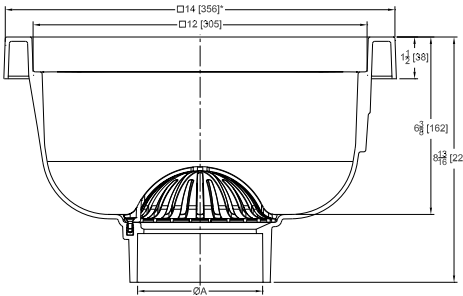


-H 1/2 Grate

FS12 PVC FLOOR SINK



- Dome strainer comes secured to prevent debris from clogging pipe lines and prevents misplacement
- 1-1/2" lip allows for installation 1" above finished floor to protect against indirect waste if required by code
- Optional plastic sediment bucket is designed to fit with the dome strainer in place adding extra drain line protection



SUFFIX	DESCRIPTION	ADD
-F	Full Grate	107.00
-H	1/2 Grate	73.00
-NF	Full Nickel Bronze Grate* (light duty)	1201.00
-NH	Half Nickel Bronze Grate*	649.00
-SF	Stainless Steel Full Grate*	1528.00
-SH	Stainless Steel Half Grate*	843.00
-TSP	ZShield Z1072	POA
-Y	Plastic Sediment Bucket	49.00
-YS	Stainless Steel Mesh Bucket	49.00

*Add 17/32 [13] to square top and 9/16 [14] to overall height



-F Full Grate



-H 1/2 Grate

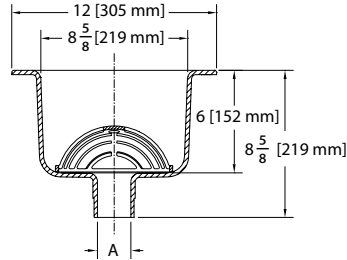


-Y Sediment Bucket

FD2375 12" X 12" A.R.E. FLOOR SINK – 6" SUMP DEPTH

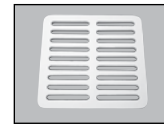


- Recommended for sanitary installations.
- Consists of a cast iron body with a white acid-resisting coating and a PVC anti-splash dome strainer.
- **Note:** Push-on connection available upon request.

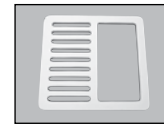


CONNECTION TYPE	MODEL NUMBER	DIM. IN INCHES [MM] A	APPROX. WT. LB [KG]	BOX QTY.	LIST PRICE EACH
No-Hub	FD2375-NH2	2" [51 mm]	22 lb [10 kg]	1	255.00
	FD2375-NH3	3" [76 mm]	23 lb [10 kg]	1	255.00
	FD2375-NH4	4" [102 mm]	23 lb [10 kg]	1	255.00

SUFFIX	DESCRIPTION	ADD
-F	Full Grate	49.00
-H	1/2 Grate	49.00
-T	3/4 Grate	49.00
-Y	Sediment Bucket	59.00



-F Full Grate



-H 1/2 Grate

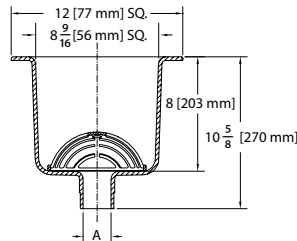


-T 3/4 Grate

FD2376 12" X 12" A.R.E. FLOOR SINK – 8" SUMP DEPTH



- Recommended for sanitary installations.
- Consists of a cast iron body with a white acid-resisting coating and a PVC anti-splash dome strainer.
- **Note:** Push-on connection available upon request.



CONNECTION TYPE	MODEL NUMBER	DIM. IN INCHES [MM] A	APPROX. WT. LB [KG]	BOX QTY.	LIST PRICE EACH
No-Hub	FD2376-NH2	2" [51 mm]	20 lb [10 kg]	1	268.00
	FD2376-NH3	3" [76 mm]	20 lb [10 kg]	1	268.00
	FD2376-NH4	4" [102 mm]	20 lb [10 kg]	1	268.00

SUFFIX	DESCRIPTION	ADD
-F	Full Grate	49.00
-H	1/2 Grate	49.00
-T	3/4 Grate	49.00
-Y	Sediment Bucket	59.00



-F Full Grate



-H 1/2 Grate

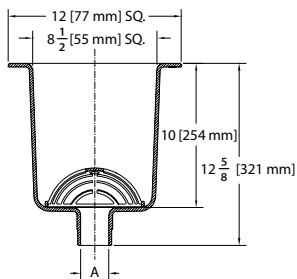


-T 3/4 Grate

FD2377 12" X 12" A.R.E. FLOOR SINK – 10" SUMP DEPTH



- Recommended for sanitary installations.
- Consists of a cast iron body with a white acid-resisting coating and a PVC anti-splash dome strainer.
- **Note:** Push-on connection available upon request.



CONNECTION TYPE	MODEL NUMBER	DIM. IN INCHES [MM] A	APPROX. WT. LB [KG]	BOX QTY.	LIST PRICE EACH
No-Hub	FD2377-NH2	2" [51 mm]	22 lb [10 kg]	1	386.00
	FD2377-NH3	3" [76 mm]	23 lb [10 kg]	1	386.00
	FD2377-NH4	4" [102 mm]	23 lb [10 kg]	1	386.00

SUFFIX	DESCRIPTION	ADD
-F	Full Grate	49.00
-H	1/2 Grate	49.00
-T	3/4 Grate	49.00
-Y	Sediment Bucket	59.00



-F Full Grate



-H 1/2 Grate

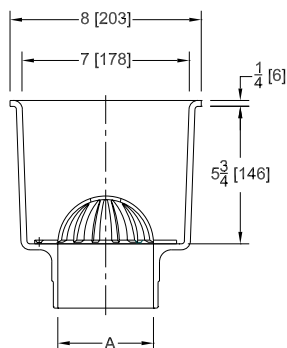


-T 3/4 Grate

FD2378 8" X 8" A.R.E. FLOOR SINK – 6" SUMP DEPTH



- Recommended for sanitary installations.
- Consists of a cast iron body with a white acid-resisting coating and a PVC anti-splash dome strainer.
- **Note:** Push-on connection available upon request.



CONNECTION TYPE	MODEL NUMBER	DIM. IN INCHES [MM] A	APPROX. WT. LB [KG]	BOX QTY.	LIST PRICE EACH
No-Hub	FD2378-NH2	2" [51 mm]	20 lb [10 kg]	1	214.00
	FD2378-NH3	3" [76 mm]	20 lb [10 kg]	1	214.00
	FD2378-NH4	4" [102 mm]	20 lb [10 kg]	1	214.00

SUFFIX	DESCRIPTION	ADD
-F	Full Grate	49.00
-H	1/2 Grate	49.00
-T	3/4 Grate	49.00
-Y	Sediment Bucket	59.00



-F Full Grate



-H 1/2 Grate



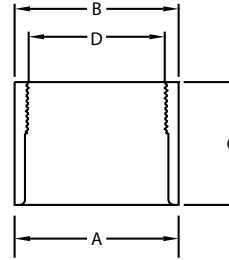
-T 3/4 Grate

JP2210 PVC OR ABS DRAIN ADAPTOR – USED IN FD2208, FD2209, AND FD2210 MODELS



- Available in white PVC or black ABS.
- Integral FIP threads allow for strainer adjustability.
- Solvent weld connections.

BODY TYPE	PART NUMBER	DIM. IN INCHES [MM]				APPROX. WT. LB [KG]	LIST PRICE EACH
		A	B	C	D		
PVC	JP2210-PV2	2" PVC Hub [51 mm]	2-3/4" [70 mm]	1-3/4" [44 mm]	2" FIP	2 lb [1 kg]	16.00
	JP2210-PV3	3" PVC Hub [76 mm]	4" [102 mm]	3" [76 mm]	3" FIP	2 lb [1 kg]	21.00
	JP2210-PV4	4" PVC Hub [102 mm]	5" [127 mm]	3-1/2" [89 mm]	4" FIP	2 lb [1 kg]	36.00
ABS	JP2210-AB2	2" ABS Hub [51 mm]	2-3/4" [70 mm]	1-3/4" [44 mm]	2" FIP	2 lb [1 kg]	16.00
	JP2210-AB3	3" ABS Hub [76 mm]	4" [102 mm]	3" [76 mm]	3" FIP	2 lb [1 kg]	21.00
	JP2210-AB4	4" ABS Hub [102 mm]	5" [127 mm]	3-1/2" [89 mm]	4" FIP	2 lb [1 kg]	35.00

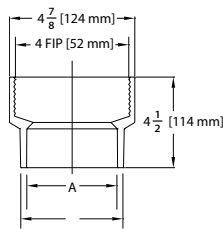


JP2211 PVC OR ABS 3" X 4" DRAIN ADAPTOR – USED IN FD2211, FD2212, AND FD2213 MODELS



- Available in white PVC or black ABS.
- Versatile connection allows adaptor to fit over standard 3" [76 mm] pipe and inside 4" [102 mm].
- Solvent weld connection.
- FIP threads allow for strainer adjustability.

BODY TYPE	MODEL NUMBER	DIM. IN INCHES [MM]		LIST PRICE EACH
		A	APPROX. WT. LB [KG]	
PVC	JP2211-PVC-Body	3" [76 mm] x 4" [102 mm]	2 lb [1 kg]	45.00
ABS	JP2211-ABS-Body	3" [76 mm] x 4" [102 mm]	2 lb [1 kg]	45.00



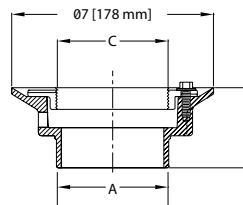
SUFFIX	DESCRIPTION	ADD
-P	1/2" [13 mm] Trap Primer Connection	N/C

JP2321 LOW-PROFILE CAST IRON DRAIN ADAPTOR WITH CLAMPING COLLAR – USED IN MODELS FD2321



- All cast iron drain adaptor available in no-hub, push-on, or IPS connection.
- FIP threaded clamp collar allows for strainer adjustability.
- Beveled drain body flange facilitates drainage.
- Integral trap primer port shipped tapped with plug.
- Generally used with waterproof membrane.
- Body has -P option.

CONNECTION TYPE	PART NUMBER	DIM. IN INCHES [MM]			APPROX. WT. LB [KG]	LIST PRICE EACH
		A	B	C		
No-Hub	JP2321-NH2-ASSY	2" [51 mm]	2- 1/2" [64 mm]	2" [51 mm], 3" [76 mm], or 3-1/2" [89 mm] FIP	4 lb [2 kg]	75.00
	JP2321-NH3-ASSY	3" [76 mm]	2- 1/2" [64 mm]	2" [51 mm], 3" [76 mm], or 3-1/2" [89 mm] FIP	4 lb [2 kg]	75.00
	JP2321-NH4-ASSY	4" [102 mm]	2- 1/2" [64 mm]	2" [51 mm], 3" [76 mm], or 3-1/2" [89 mm] FIP	4 lb [2 kg]	75.00
Push-On	JP2321-PO2-ASSY	2" [51 mm]	3-3/8" [85 mm]	2" [51 mm], 3" [76 mm], or 3-1/2" [89 mm] FIP	4 lb [2 kg]	84.00
	JP2321-PO3-ASSY	3" [76 mm]	4-3/8" [110 mm]	2" [51 mm], 3" [76 mm], or 3-1/2" [89 mm] FIP	4 lb [2 kg]	84.00
IPS	JP2321-IP2-ASSY	2" [51 mm]	2- 1/2" [64 mm]	2" [51 mm], 3" [76 mm], or 3-1/2" [89 mm] FIP	4 lb [2 kg]	75.00
	JP2321-IP3-ASSY	3" [76 mm]	2" [51 mm]	2" [51 mm], 3" [76 mm], or 3-1/2" [89 mm] FIP	4 lb [2 kg]	75.00

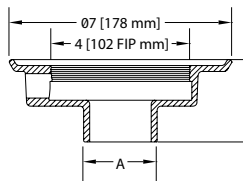


JP2322 LOW-PROFILE CAST IRON DRAIN ADAPTOR – USED IN FD2322 MODELS



- All cast iron body with integral FIP threads allow strainer adjustability.
- Available in either no-hub, push-on, or IPS connection.
- Integral trap primer port shipped tapped with plug.
- Generally used in non-membrane applications.
- Body has -P option.

CONNECTION TYPE	PART NUMBER	DIM. IN INCHES [MM]		APPROX. WT. LB [KG]	LIST PRICE EACH
		A	B		
No-Hub	JP2322-NH2-ASSY	2" [51 mm]	2- 1/2" [64 mm]	4 lb [2 kg]	67.00
	JP2322-NH3-ASSY	3" [76 mm]	2- 1/2" [64 mm]	4 lb [2 kg]	67.00
	JP2322-NH4-ASSY	4" [102 mm]	2- 1/2" [64 mm]	4 lb [2 kg]	67.00
Push-On	JP2322-PO2-ASSY	2" [51 mm]	3-3/8" [85 mm]	4 lb [2 kg]	75.00
	JP2322-PO3-ASSY	3" [76 mm]	4-3/8" [110 mm]	4 lb [2 kg]	75.00
IPS	JP2322-IP2-ASSY	2" [51 mm]	2- 1/2" [64 mm]	4 lb [2 kg]	75.00
	JP2322-IP3-ASSY	3" [76 mm]	2" [51 mm]	4 lb [2 kg]	75.00



CLEANOUTS

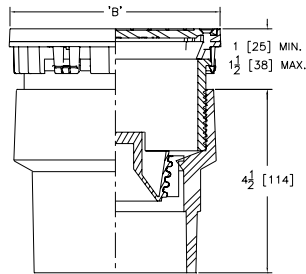
CO 3" X 4" ADJUSTABLE FINISHED AREA CLEANOUT	38
CO1 ADJUSTABLE FLOOR CLEANOUT	39
CO2 5" TOP ASSEMBLY ADJUSTABLE FLOOR CLEANOUT WITH DECK PLATE	40
CO2450 ADJUSTABLE FLOOR CLEANOUT	41
CO2490 CLEANOUT PLUG – ABS OR PVC	41
CO2521 FINISHED AREA FLOOR ACCESS HOUSING	42
CO2530 ROUND ACCESS COVER	42

CO 3" X 4" ADJUSTABLE FINISHED AREA CLEANOUT



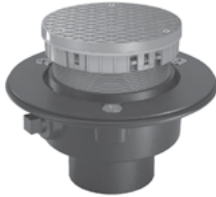
- Recommended for finished areas.
- Cleanout is designed for foot traffic and light-duty applications.
- Furnished with a PVC or ABS body with an adjustable PVC head assembly, a nickel bronze, SS or DI, frame and cover, and an ABS tapered thread plug.
- Fits over 3" [76 mm] or inside 4" [102 mm] Schedule 40 DWV pipe.

BODY TYPE	MODEL NUMBER	DIM. IN INCHES [MM]	APPROX. WT. LB [KG]	STRAINER TYPE	BOX QTY.	LIST PRICE EACH
		A				
PVC	CO-PV3	3" [76 mm] x 4" [102 mm] Solvent Weld	5 lb [2 kg]	Nickel Bronze Round	8	139.00
	CO-PV3-R6	3" [76 mm] x 4" [102 mm] Solvent Weld	6 lb [3 kg]	Nickel Bronze Round	8	139.00
	CO-PV3-ST	3" [76 mm] x 4" [102 mm] Solvent Weld	5 lb [2 kg]	Nickel Bronze Square	8	179.00
	CO-PV3-S6	3" [76 mm] x 4" [102 mm] Solvent Weld	6 lb [3 kg]	Nickel Bronze Square	8	179.00
	CO-PV3-SS	3" [76 mm] x 4" [102 mm] Solvent Weld	5 lb [2 kg]	Stainless Steel Round	8	139.00
	CO-PV3-R6-SS	3" [76 mm] x 4" [102 mm] Solvent Weld	6 lb [3 kg]	Stainless Steel Round	8	268.00
	CO-PV3-ST-SS	3" [76 mm] x 4" [102 mm] Solvent Weld	5 lb [2 kg]	Stainless Steel Square	8	171.00
	CO-PV3-S6-SS	3" [76 mm] x 4" [102 mm] Solvent Weld	6 lb [3 kg]	Stainless Steel Square	8	171.00
	CO-PV3-DI	3" [76 mm] x 4" [102 mm] Solvent Weld	5 lb [2 kg]	Ductile Iron Round	8	80.00
ABS	CO-AB3	3" [76 mm] x 4" [102 mm] Solvent Weld	5 lb [2 kg]	Nickel Bronze Round	8	139.00
	CO-AB3-R6	3" [76 mm] x 4" [102 mm] Solvent Weld	6 lb [3 kg]	Nickel Bronze Round	8	139.00
	CO-AB3-ST	3" [76 mm] x 4" [102 mm] Solvent Weld	5 lb [2 kg]	Nickel Bronze Square	8	179.00
	CO-AB3-S6	3" [76 mm] x 4" [102 mm] Solvent Weld	6 lb [3 kg]	Nickel Bronze Square	8	179.00
	CO-AB3-SS	3" [76 mm] x 4" [102 mm] Solvent Weld	5 lb [2 kg]	Stainless Steel Round	8	139.00
	CO-AB3-R6-SS	3" [76 mm] x 4" [102 mm] Solvent Weld	6 lb [3 kg]	Stainless Steel Round	8	139.00
	CO-AB3-ST-SS	3" [76 mm] x 4" [102 mm] Solvent Weld	5 lb [2 kg]	Stainless Steel Square	8	179.00
	CO-AB3-S6-SS	3" [76 mm] x 4" [102 mm] Solvent Weld	6 lb [3 kg]	Stainless Steel Square	8	179.00
	CO-AB3-DI	3" [76 mm] x 4" [102 mm] Solvent Weld	5 lb [2 kg]	Ductile Iron Round	8	80.00



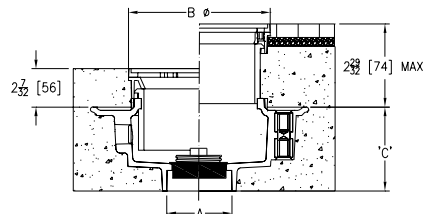
SUFFIX	DESCRIPTION	ADD
-CM	Carpet Marker	23.00
-VP	Vandal Proof	10.00

CO1 ADJUSTABLE FLOOR CLEANOUT



- Adjustable cleanout with PVC, ABS or cast iron body with solvent weld, push on or no hub outs and gas tight churney plug.

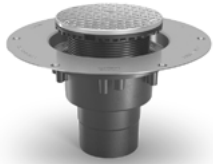
BODY TYPE	MODEL NUMBER	DIM. IN INCHES [MM]			APPROX. WT. LB [KG]	STRAINER TYPE	BOX QTY.	LIST PRICE EACH
		A	B	C				
PVC	CO1-PV2	2" [51 mm] x 3" [76 mm] Solvent Weld	5-3/16 [132]	3 [76]	4 lb [2 kg]	Nickel Bronze Round	1	156.00
	CO1-PV2-R6	2" [51 mm] x 3" [76 mm] Solvent Weld	6 [152]	3 [76]	5 lb [2 kg]	Nickel Bronze Round	1	196.00
	CO1-PV2-SS	2" [51 mm] x 3" [76 mm] Solvent Weld	5-3/16 [132]	3 [76]	4 lb [2 kg]	Stainless Steel Round	1	156.00
	CO1-PV2-R6-SS	2" [51 mm] x 3" [76 mm] Solvent Weld	6 [152]	3 [76]	5 lb [2 kg]	Stainless Steel Round	1	196.00
	CO1-PV3	3" [76 mm] x 4" [102 mm] Solvent Weld	5-3/16 [132]	3-3/4 [95]	4 lb [2 kg]	Nickel Bronze Round	1	156.00
	CO1-PV3-R6	3" [76 mm] x 4" [102 mm] Solvent Weld	6 [152]	3-3/4 [95]	5 lb [2 kg]	Nickel Bronze Round	1	196.00
	CO1-PV3-SS	3" [76 mm] x 4" [102 mm] Solvent Weld	5-3/16 [132]	3-3/4 [95]	4 lb [2 kg]	Stainless Steel Round	1	156.00
	CO1-PV3-R6-SS	3" [76 mm] x 4" [102 mm] Solvent Weld	6 [152]	3-3/4 [95]	5 lb [2 kg]	Stainless Steel Round	1	196.00
	CO1-PV4	4" [102 mm] Solvent Weld	5-3/16 [132]	4 [102]	4 lb [2 kg]	Nickel Bronze Round	1	156.00
	CO1-PV4-R6	4" [102 mm] Solvent Weld	6 [152]	4 [102]	5 lb [2 kg]	Nickel Bronze Round	1	196.00
	CO1-PV4-SS	4" [102 mm] Solvent Weld	5-3/16 [132]	4 [102]	4 lb [2 kg]	Stainless Steel Round	1	156.00
	CO1-PV4-R6-SS	4" [102 mm] Solvent Weld	6 [152]	4 [102]	5 lb [2 kg]	Stainless Steel Round	1	196.00
ABS	CO1-AB2	2" [51 mm] x 3" [76 mm] Solvent Weld	5-3/16 [132]	3 [76]	4 lb [2 kg]	Nickel Bronze Round	1	156.00
	CO1-AB2-R6	2" [51 mm] x 3" [76 mm] Solvent Weld	6 [152]	3 [76]	5 lb [2 kg]	Nickel Bronze Round	1	196.00
	CO1-AB2-SS	2" [51 mm] x 3" [76 mm] Solvent Weld	5-3/16 [132]	3 [76]	4 lb [2 kg]	Stainless Steel Round	1	156.00
	CO1-AB2-R6-SS	2" [51 mm] x 3" [76 mm] Solvent Weld	6 [152]	3 [76]	5 lb [2 kg]	Stainless Steel Round	1	196.00
	CO1-AB3	3" [76 mm] x 4" [102 mm] Solvent Weld	5-3/16 [132]	3-3/4 [95]	4 lb [2 kg]	Nickel Bronze Round	1	156.00
	CO1-AB3-R6	3" [76 mm] x 4" [102 mm] Solvent Weld	6 [152]	3-3/4 [95]	5 lb [2 kg]	Nickel Bronze Round	1	196.00
	CO1-AB3-SS	3" [76 mm] x 4" [102 mm] Solvent Weld	5-3/16 [132]	3-3/4 [95]	4 lb [2 kg]	Stainless Steel Round	1	156.00
	CO1-AB3-R6-SS	3" [76 mm] x 4" [102 mm] Solvent Weld	6 [152]	3-3/4 [95]	5 lb [2 kg]	Stainless Steel Round	1	196.00
	CO1-AB4	4" [102 mm] Solvent Weld	5-3/16 [132]	4 [102]	4 lb [2 kg]	Nickel Bronze Round	1	156.00
	CO1-AB4-R6	4" [102 mm] Solvent Weld	6 [152]	4 [102]	5 lb [2 kg]	Nickel Bronze Round	1	196.00
	CO1-AB4-SS	4" [102 mm] Solvent Weld	5-3/16 [132]	4 [102]	4 lb [2 kg]	Stainless Steel Round	1	156.00
	CO1-AB4-R6-SS	4" [102 mm] Solvent Weld	6 [152]	4 [102]	5 lb [2 kg]	Stainless Steel Round	1	196.00
	CO1-PO2	2" [51 mm]	5-3/16 [132]	4 [102]	7 lb [3 kg]	Nickel Bronze Round	1	177.00
	CO1-PO2-R6	2" [51 mm]	6 [152]	4 [102]	8 lb [4 kg]	Nickel Bronze Round	1	217.00
	CO1-PO2-SS	2" [51 mm]	5-3/16 [132]	4 [102]	7 lb [3 kg]	Stainless Steel Round	1	177.00
	CO1-PO2-R6-SS	2" [51 mm]	6 [152]	4 [102]	8 lb [4 kg]	Stainless Steel Round	1	217.00
	CO1-PO3	3" [76 mm]	5-3/16 [132]	4 [102]	8 lb [4 kg]	Nickel Bronze Round	1	177.00
	CO1-PO3-R6	3" [76 mm]	6 [152]	4 [102]	9 lb [4 kg]	Nickel Bronze Round	1	217.00
	CO1-PO3-SS	3" [76 mm]	5-3/16 [132]	4 [102]	8 lb [4 kg]	Stainless Steel Round	1	177.00
	CO1-PO3-R6-SS	3" [76 mm]	6 [152]	4 [102]	9 lb [4 kg]	Stainless Steel Round	1	217.00
	CO1-PO4	4" [102 mm]	5-3/16 [132]	4 [102]	7 lb [3 kg]	Nickel Bronze Round	1	177.00
	CO1-PO4-R6	4" [102 mm]	6 [152]	4 [102]	8 lb [4 kg]	Nickel Bronze Round	1	217.00
	CO1-PO4-SS	4" [102 mm]	5-3/16 [132]	4 [102]	7 lb [3 kg]	Stainless Steel Round	1	177.00
	CO1-PO4-R6-SS	4" [102 mm]	6 [152]	4 [102]	8 lb [4 kg]	Stainless Steel Round	1	217.00
	CO1-NH2	2" [51 mm]	5-3/16 [132]	4 [102]	7 lb [3 kg]	Nickel Bronze Round	1	177.00
	CO1-NH2-R6	2" [51 mm]	6 [152]	4 [102]	8 lb [4 kg]	Nickel Bronze Round	1	217.00
	CO1-NH2-SS	2" [51 mm]	5-3/16 [132]	4 [102]	7 lb [3 kg]	Stainless Steel Round	1	177.00
	CO1-NH2-R6-SS	2" [51 mm]	6 [152]	4 [102]	8 lb [4 kg]	Stainless Steel Round	1	217.00
	CO1-NH3	3" [76 mm]	5-3/16 [132]	4 [102]	8 lb [4 kg]	Nickel Bronze Round	1	184.00
	CO1-NH3-R6	3" [76 mm]	6 [152]	4 [102]	9 lb [4 kg]	Nickel Bronze Round	1	217.00
	CO1-NH3-SS	3" [76 mm]	5-3/16 [132]	4 [102]	8 lb [4 kg]	Stainless Steel Round	1	177.00
	CO1-NH3-R6-SS	3" [76 mm]	6 [152]	4 [102]	9 lb [4 kg]	Stainless Steel Round	1	217.00
	CO1-NH3-DI	3" [76 mm]	5-3/16 [132]	4 [102]	8 lb [4 kg]	Ductile Iron Round	1	193.00
	CO1-NH4	4" [102 mm]	5-3/16 [132]	4 [102]	7 lb [3 kg]	Nickel Bronze Round	1	177.00
	CO1-NH4-R6	4" [102 mm]	6 [152]	4 [102]	8 lb [4 kg]	Nickel Bronze Round	1	217.00
	CO1-NH4-SS	4" [102 mm]	5-3/16 [132]	4 [102]	7 lb [3 kg]	Stainless Steel Round	1	177.00
	CO1-NH4-R6-SS	4" [102 mm]	6 [152]	4 [102]	8 lb [4 kg]	Stainless Steel Round	1	217.00



SUFFIX	DESCRIPTION	ADD
-VP	Vandal Proof	10.00

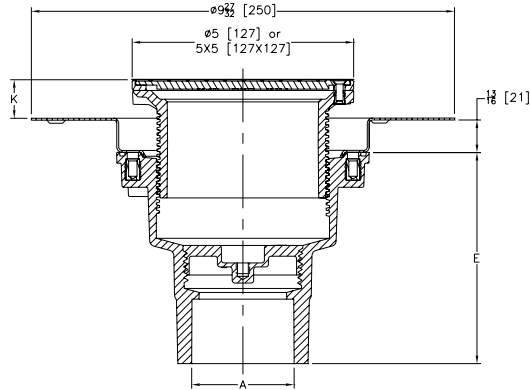
For additional product information, please visit www.zurn.ca
Patent zurn.ca/patents

CO2 5" TOP ASSEMBLY ADJUSTABLE FLOOR CLEANOUT WITH DECK PLATE



- Zurn CO2 Floor Cleanout PVC or ABS solvent weld body with gas and watertight cleanout plug, stainless steel deckplate, and top assembly.
- CO2 cleanout series is available with a square or round light duty cover in nickel bronze or stainless steel.
- Cleanout is designed in accordance with ASME A112.36.2M.

BODY TYPE	MODEL NUMBER	DIM. IN INCHES [MM]				APPROX. WT. LB [KG]	STRAINER TYPE	LIST PRICE EACH
		A	E	K				
				MIN	MAX			
PVC	C02-PV2	2-3 [51-76]	4-15/16 [125]	0	1-7/16 [37]	5 [2]	Round Nickel Bronze	311.00
	C02-PV3	3-4 [76-102]	3-25/32 [96]	0	1-7/16 [37]	5 [2]	Round Nickel Bronze	311.00
	C02-PV2-ST	2-3 [51-76]	4-15/16 [125]	7/16 [11]	1-11/16 [43]	6 [3]	Square Nickel Bronze	175.00
	C02-PV3-ST	3-4 [76-102]	3-25/32 [96]	7/16 [11]	1-11/16 [43]	6 [3]	Square Nickel Bronze	175.00
	C02-PV2-SS	2-3 [51-76]	4-15/16 [125]	0	1-7/16 [37]	5 [2]	Round Stainless Steel	304.00
	C02-PV3-SS	3-4 [76-102]	3-25/32 [96]	0	1-7/16 [37]	5 [2]	Round Stainless Steel	304.00
	C02-PV2-ST-SS	2-3 [51-76]	4-15/16 [125]	7/16 [11]	1-11/16 [43]	6 [3]	Square Stainless Steel	175.00
	C02-PV3-ST-SS	3-4 [76-102]	3-25/32 [96]	7/16 [11]	1-11/16 [43]	6 [3]	Square Stainless Steel	175.00
ABS	C02-AB2	2-3 [51-76]	4-15/16 [125]	0	1-7/16 [37]	5 [2]	Round Nickel Bronze	292.00
	C02-AB3	3-4 [76-102]	3-25/32 [96]	0	1-7/16 [37]	5 [2]	Round Nickel Bronze	292.00
	C02-AB2-ST	2-3 [51-76]	4-15/16 [125]	7/16 [11]	1-11/16 [43]	6 [3]	Square Nickel Bronze	175.00
	C02-AB3-ST	3-4 [76-102]	3-25/32 [96]	7/16 [11]	1-11/16 [43]	6 [3]	Square Nickel Bronze	175.00
	C02-AB2-SS	2-3 [51-76]	4-15/16 [125]	0	1-7/16 [37]	5 [2]	Round Stainless Steel	129.00
	C02-AB3-SS	3-4 [76-102]	3-25/32 [96]	0	1-7/16 [37]	5 [2]	Round Stainless Steel	129.00
	C02-AB2-ST-SS	2-3 [51-76]	4-15/16 [125]	7/16 [11]	1-11/16 [43]	6 [3]	Square Stainless Steel	175.00
	C02-AB3-ST-SS	3-4 [76-102]	3-25/32 [96]	7/16 [11]	1-11/16 [43]	6 [3]	Square Stainless Steel	175.00



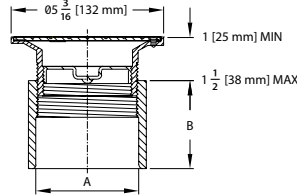
SUFFIX	DESCRIPTION	ADD
-CC	Stainless Steel Clamp Collar	28.00
-FI	Floor Insert (For Round Top Assembly Only)	37.00

CO2450 ADJUSTABLE FLOOR CLEANOUT



- Recommended for foot traffic and medium-duty applications.
- Cleanout is furnished with a PVC or ABS body with an adjustable nickel top assembly and an ABS tapered thread plug.

BODY TYPE	MODEL NUMBER	DIM. IN INCHES [MM]		APPROX. WT. LB [KG]	BOX QTY.	LIST PRICE EACH
		A	B			
PVC	CO2450-PV2	2" [51 mm]	1-7/8" [48 mm]	4 lb [2 kg]	8	152.00
	CO2450-PV3	3" [76 mm]	3-5/16" [84 mm]	4 lb [2 kg]	8	152.00
	CO2450-PV4	4" [102 mm]	3-5/16" [84 mm]	4 lb [2 kg]	8	152.00
ABS	CO2450-AB2	2" [51 mm]	1-7/8" [48 mm]	4 lb [2 kg]	8	152.00
	CO2450-AB3	3" [76 mm]	3-5/16" [84 mm]	4 lb [2 kg]	8	152.00
	CO2450-AB4	4" [102 mm]	3-5/16" [84 mm]	4 lb [2 kg]	8	152.00



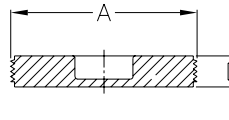
SUFFIX	DESCRIPTION	ADD
-CM	Carpet Marker	23.00
-VP	Vandal Proof	10.00

CO2490 CLEANOUT PLUG – ABS OR PVC



- Countersunk cleanout plug.

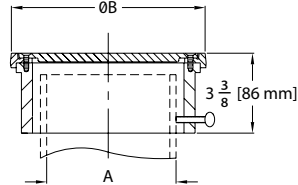
BODY TYPE	MODEL NUMBER	DIM. IN INCHES [MM]		APPROX. WT. LB [KG]	BOX QTY.	LIST PRICE EACH
		A	D			
ABS	CO2490-A15	1-1/2" [38 mm] IP ABS Plug	9/16" [14 mm]	1 lb [1/2 kg]	25	5.00
	CO2490-AB2	2" [51 mm] IP ABS Plug	1/2" [13 mm]	1 lb [1/2 kg]	25	10.00
	CO2490-A25	2-1/2" [63 mm] IP ABS Plug	1/2" [13 mm]	1 lb [1/2 kg]	25	10.00
	CO2490-AB3	3" [76 mm] IP ABS Plug	3/4" [19 mm]	1 lb [1/2 kg]	25	10.00
	CO2490-A35	3-1/2" [89 mm] IP ABS Plug	3/4" [19 mm]	1 lb [1/2 kg]	25	11.00
	CO2490-AB4	4" [102 mm] IP ABS Plug	3/4" [19 mm]	1 lb [1/2 kg]	25	13.00
PVC	CO2490-P15	1-1/2" [38 mm] IP PVC Plug	9/16" [14 mm]	1 lb [1/2 kg]	25	5.00
	CO2490-PV2	2" [51 mm] IP PVC Plug	1/2" [13 mm]	1 lb [1/2 kg]	25	10.00
	CO2490-P25	2-1/2" [63 mm] IP PVC Plug	1/2" [13 mm]	1 lb [1/2 kg]	25	10.00
	CO2490-PV3	3" [76 mm] IP PVC Plug	3/4" [19 mm]	1 lb [1/2 kg]	25	10.00
	CO2490-P35	3-1/2" [89 mm] IP PVC Plug	3/4" [19 mm]	1 lb [1/2 kg]	25	10.00
	CO2490-PV4	4" [102 mm] IP PVC Plug	3/4" [19 mm]	1 lb [1/2 kg]	25	11.00



CO2521 FINISHED AREA FLOOR ACCESS HOUSING



DIM. IN INCHES [MM]					
MODEL NUMBER	A	B	APPROX. WT. LB [KG]	BOX QTY.	LIST PRICE EACH
C02521-3	3" [76 mm]	6-1/8" [156 mm]	3 lb [2 kg]	1	112.00
C02521-4	4" [102 mm]	7-1/4" [184 mm]	4 lb [2 kg]	1	143.00



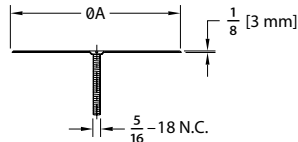
SUFFIX	DESCRIPTION	ADD
-VP	Vandal Proof	10.00

- Recommended for foot traffic and light cart applications.
- Cast iron body and nickel scoriated top come complete with adjusting screws.

CO2530 ROUND ACCESS COVER



DIM. IN INCHES [MM]					
MODEL NUMBER	A COVER DIAMETER	NOM. PIPE SIZE	APPROX. WT. LB [KG]	BOX QTY.	LIST PRICE EACH
C02530-SS5	5" [127 mm]	2" [51 mm] - 3-1/2" [89 mm]	1 lb [1/2 kg]	25	17.00
C02530-SS7	7" [178 mm]	4" [102 mm] - 6-1/2" [165 mm]	2 lb [1 kg]	25	29.00



SUFFIX	DESCRIPTION	ADD
-VP	Vandal Proof	10.00

- Round stainless steel access cover comes complete with securing screw.

ROOF DRAINS

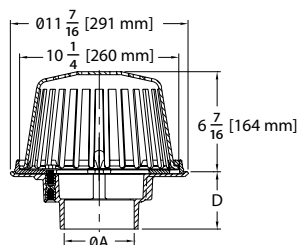
RD2120 MAIN AREA ROOF DRAIN – PVC OR ABS	44
RD2130 CAST IRON, COMBINATION ROOF DRAIN AND OVERFLOW	44
RD2150 REPLACEMENT ROOF DRAIN	45
Z1320-CXL LEAD-FREE ECOLOTROL® WALL HYDRANT	48

RD2120 MAIN AREA ROOF DRAIN – PVC OR ABS



- Constructed of a heavy walled ABS or PVC, furnished with galvanized steel threaded inserts to accept securing bolts.
- Dura-Coated cast iron clamp device with integral gravel guard.
- Heavy-duty, high-impact, polyethylene dome strainer.

BODY TYPE	MODEL NUMBER	DIM. IN INCHES [MM]		APPROX. WT. LB [KG]	BOX QTY.	LIST PRICE EACH
		A	B			
PVC	RD2120-PV2	2" [51 mm]	2-31/32" [76 mm]	15 lb [7 kg]	1	165.00
	RD2120-PV3	3" [78 mm]	3-11/16" [94 mm]	15 lb [7 kg]	1	165.00
	RD2120-PV4	4" [102 mm]	3-13/16" [97 mm]	15 lb [7 kg]	1	165.00
ABS	RD2120-AB2	2" [51 mm]	2-31/32" [76 mm]	15 lb [7 kg]	1	165.00
	RD2120-AB3	3" [78 mm]	3-11/16" [94 mm]	15 lb [7 kg]	1	165.00
	RD2120-AB4	4" [102 mm]	3-13/16" [97 mm]	15 lb [7 kg]	1	165.00



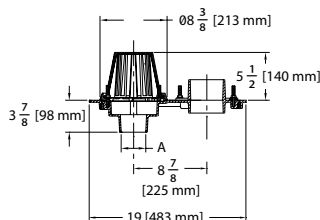
SUFFIX	DESCRIPTION	ADD
-AI	Aluminum Dome Strainer	54.00
-C	Underdeck Clamp	50.00
-CI	Cast Iron Dome Strainer Vandal Proof	93.00
-E	Extension Flange	53.00
-R	Roof Sump Receiver	56.00
-VP	Vandal-Proof Screws for Dome	10.00

RD2130 CAST IRON, COMBINATION ROOF DRAIN AND OVERFLOW



- Constructed of a Dura-Coated cast iron body.
- Dura-Coated cast iron clamp device with integral gravel guard.
- Cast iron dome strainer comes standard.
- Overflow dome comes standard.

CONNECTION TYPE	MODEL NUMBER	DIM. IN INCHES [MM]		APPROX. WT. LB [KG]	BOX QTY.	LIST PRICE EACH
		A				
No-Hub	RD2130-NH2	2" [51 mm]		20 lb [10 kg]	1	299.00
	RD2130-NH3	3" [78 mm]		20 lb [10 kg]	1	299.00
	RD2130-NH4	4" [102 mm]		20 lb [10 kg]	1	299.00



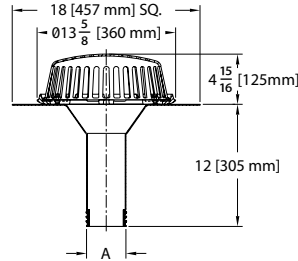
SUFFIX	DESCRIPTION	ADD
-C	Underdeck Clamp	50.00
-VP	Vandal-Proof Screws for Dome	10.00

RD2150 REPLACEMENT ROOF DRAIN



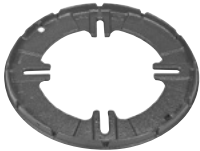
- Constructed of 16-gage, type 304 stainless steel.
- Dura-Coated, cast iron clamp device with integral gravel guard.
- Heavy-duty, Dura-Coated, cast iron dome strainer.
- Flat drain body available upon request.

MODEL NUMBER	DIM. IN INCHES [MM]		APPROX. WT. LB [KG]	BOX QTY.	LIST PRICE EACH
	A				
RD2150-SS3	3" [78 mm]		25 lb [12 kg]	1	506.00
RD2150-SS4	4" [102 mm]		25 lb [12 kg]	1	526.00
RD2150-SS5	5" [127 mm]		25 lb [12 kg]	1	637.00
RD2150-SS6	6" [150 mm]		25 lb [12 kg]	1	637.00



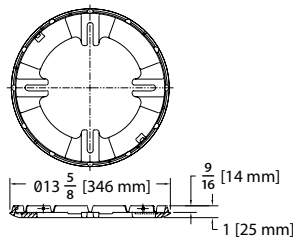
SUFFIX	DESCRIPTION	ADD
-AL	6" [152] High Aluminum Dome Strainer	112.00
-FS	Flat Sump Roof Drain Body (Contact Customer Care)	POA
-VP	Vandal-Proof Screws for Dome	10.00

RD2190 UNIVERSAL MEMBRANE CLAMP KIT



- Dura-Coated cast iron clamp device with integral gravel guard.
- Fits bolt center radii of more common roof drain bodies 10"-15" [254mm-381mm] in diameter.
- Complete with mounting hardware and Toughnutz bolts.

MODEL NUMBER	DESCRIPTION	APPROX. WT. LB [KG]	BOX QTY.	LIST PRICE EACH
RD2190	Universal Membrane Clamp	6 lb [3 kg]	2	127.00



SUFFIX	DESCRIPTION	ADD
-DS	Dura-Coated Cast Iron Dome Strainer	97.00
-VP	Vandal-Proof Screws for Dome	10.00

NOTES

EZTM

FLOOR DRAINS

CLEANOUTS

ROOF DRAINS

HYDRANTS

INTERCEPTORS

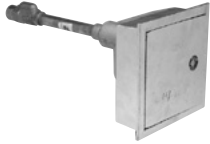
BASINS & SINKS

MISCELLANEOUS

HYDRANTS

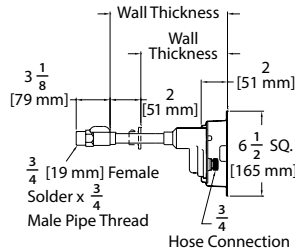
Z1320-CXL-BFP LEAD-FREE ECOLOTROL® WALL HYDRANT	48	Z1396XL LEAD-FREE YARD HYDRANT	57
Z1321-CXL LEAD-FREE ECOLOTROL® WALL HYDRANT	49	Z1399XL-BFP LEAD-FREE BACKFLOW PREVENTER	57
Z1330-C MODERATE CLIMATE ECOLOTROL WALL HYDRANT	49	Z1399-HG HYDRANT GUARD	57
Z1330-C-BFP MODERATE CLIMATE ECOLOTROL WALL HYDRANT	50	Z1399-HGS HYDRANT GUARD STEM	57
Z1333-C MODERATE CLIMATE ECOLOTROL WALL HYDRANT	50	Z1399XL-VB VACUUM BREAKER	58
Z1341XL LEAD-FREE WALL FAUCET	51	Z1320-CXL/Z1320-CXL-BFP/Z1321-CXL – REPAIR KIT	58
Z1341 WALL FAUCET BOX	51	Z1330-C/Z1330-C-BFP/Z1333-C – REPAIR KIT	58
Z1343 LAWN FAUCET	52	Z1341XL/Z1343 REPAIR KIT	59
Z1344 WALL FAUCET	52	Z1345 REPAIR KIT	59
Z1345 WALL FAUCET	53	Z1348 REPAIR KIT	59
Z1346 WALL FAUCET	54	Z1350 REPAIR KIT	60
Z1348-BFP WALL FAUCET	55	Z1361 REPAIR KIT	60
Z1349 NARROW WALL HYDRANT	55	Z1396XL REPAIR KIT	60
Z1361 ENCASED GROUND HYDRANT	56	GT2700 GREASE INTERCEPTOR	62
Z1391 POST HYDRANT	56		

Z1320-CXL LEAD-FREE ECOLOTROL® WALL HYDRANT



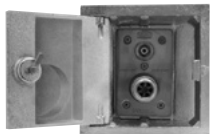
- Encased, self-draining, non-freeze, anti-siphon wall hydrant with vandal-resistant integral vacuum breaker, and chrome-plated rough bronze box.
- Ideal for commercial applications such as office buildings, apartment complexes, malls and shopping centers, schools, churches, and industrial buildings.
- Standard inlet connection combination 3/4" female solder x 3/4" male pipe thread.

MODEL NUMBER	WALL THICKNESS IN INCHES [MM]	APPROX. WT. LB [KG]	LIST PRICE EACH
Z1320-CXL-6	6" [152 mm]	5 lb [2 kg]	892.00
Z1320-CXL-8	8" [203 mm]	5 lb [2 kg]	892.00
Z1320-CXL-10	10" [254 mm]	5 lb [2 kg]	892.00
Z1320-CXL-12	12" [305 mm]	6 lb [3 kg]	921.00
Z1320-CXL-14	14" [356 mm]	6 lb [3 kg]	921.00
Z1320-CXL-16	16" [406 mm]	6 lb [3 kg]	921.00
Z1320-CXL-18	18" [457 mm]	8 lb [4 kg]	948.00
Z1320-CXL-20	20" [508 mm]	8 lb [4 kg]	948.00
Z1320-CXL-22	22" [559 mm]	8 lb [4 kg]	948.00
Z1320-CXL-24	24" [610 mm]	8 lb [4 kg]	948.00



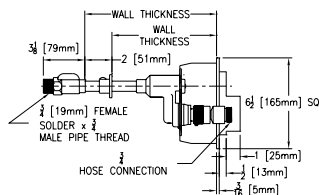
SUFFIX	DESCRIPTION	ADD
-CL	Cylinder Lock	73.00
-NB	Polished Nickel Bronze Box	112.00
-PB	Polished Bronze Box and Faceplate	112.00
-RA4	24" [610] Wall Rod Assembly with Repair Kit (-RK)	POA
-RK	Hydrant Repair Kit (HYD-RK-Z1321-CXL)	95.00
-SS	Stainless Steel Box	N/C
-WC	Wall Clamp	N/C
-34EL	3/4" 90° Solder Inlet Elbow	42.00
-34FIP	3/4" IP Straight Female Inlet Adapter	42.00

Z1320-CXL-BFP LEAD-FREE ECOLOTROL® WALL HYDRANT



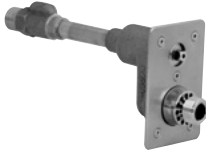
- Encased, self-draining, non-freeze, anti-siphon wall hydrant complete with hose connection backflow preventer, integral vacuum breaker, and chrome-plated rough cast bronze box.
- Ideal for commercial applications such as office buildings, apartment complexes, malls and shopping centers, schools, churches, and industrial buildings.
- Standard inlet connection combination 3/4" female solder x 3/4" male pipe thread.

MODEL NUMBER	WALL THICKNESS IN INCHES [MM]	APPROX. WT. LB [KG]	LIST PRICE EACH
Z1320-CXL-06-BFP	6" [152 mm]	5 lb [2 kg]	902.00
Z1320-CXL-08-BFP	8" [203 mm]	5 lb [2 kg]	902.00
Z1320-CXL-10-BFP	10" [254 mm]	5 lb [2 kg]	930.00
Z1320-CXL-12-BFP	12" [305 mm]	6 lb [3 kg]	930.00
Z1320-CXL-14-BFP	14" [356 mm]	6 lb [3 kg]	930.00
Z1320-CXL-16-BFP	16" [406 mm]	6 lb [3 kg]	930.00
Z1320-CXL-18-BFP	18" [457 mm]	8 lb [4 kg]	955.00
Z1320-CXL-20-BFP	20" [508 mm]	8 lb [4 kg]	955.00
Z1320-CXL-22-BFP	22" [559 mm]	8 lb [4 kg]	955.00
Z1320-CXL-24-BFP	24" [610 mm]	8 lb [4 kg]	955.00



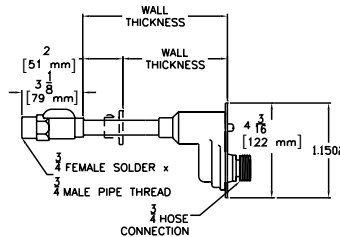
SUFFIX	DESCRIPTION	ADD
-CL	Cylinder Lock	73.00
-RA4	24" [610] Wall Rod Assembly with Repair Kit (-RK)	110.00
-RK	Hydrant Repair Kit (HYD-RK-Z1321-CXL)	95.00
-WC	Wall Clamp	N/C
-34EL	3/4" 90° Solder Inlet Elbow	42.00
-34FIP	3/4" IP Straight Female Inlet Adapter	42.00

Z1321-CXL LEAD-FREE ECOLOTROL® WALL HYDRANT



- Self-draining, non-freeze wall hydrant with vandal-resistant integral vacuum breaker.
- Ideal for commercial applications such as office buildings, apartment complexes, malls and shopping centers, schools, churches, and industrial buildings.
- Standard inlet connection combination 3/4" female solder x 3/4" male pipe thread.

MODEL NUMBER	WALL THICKNESS IN INCHES [MM]	APPROX. WT. LB [KG]	LIST PRICE EACH
Z1321-CXL-4	4" [102 mm]	3 lb [1 kg]	447.00
Z1321-CXL-6	6" [152 mm]	3 lb [1 kg]	447.00
Z1321-CXL-8	8" [203 mm]	3 lb [1 kg]	447.00
Z1321-CXL-10	10" [254 mm]	4 lb [2 kg]	477.00
Z1321-CXL-12	12" [305 mm]	4 lb [2 kg]	477.00
Z1321-CXL-14	14" [356 mm]	4 lb [2 kg]	477.00
Z1321-CXL-16	16" [406 mm]	4 lb [2 kg]	477.00
Z1321-CXL-18	18" [457 mm]	5 lb [2 kg]	506.00
Z1321-CXL-20	20" [508 mm]	5 lb [2 kg]	506.00
Z1321-CXL-22	22" [559 mm]	6 lb [3 kg]	506.00
Z1321-CXL-24	24" [610 mm]	6 lb [3 kg]	506.00



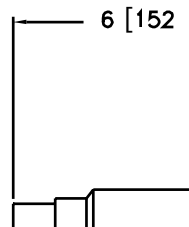
SUFFIX	DESCRIPTION	ADD
-AN	Angled Nozzle Hose Connection	N/C
-PB	Polished Bronze Box and Faceplate	112.00
-RK	Hydrant Repair Kit (HYD-RK-Z1321-CXL)	95.00
-WC	Wall Clamp	N/C
-34EL	3/4" 90° Solder Inlet Elbow	42.00
-34FIP	3/4" IP Straight Female Inlet Adapter	42.00

Z1330-C MODERATE CLIMATE ECOLOTROL® WALL HYDRANT



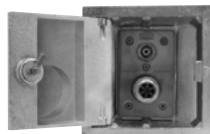
- Self-draining wall hydrant, vandal-resistant integral vacuum breaker, and chrome-plated rough bronze box.
- Designed for commercial applications in moderate climate areas.
- Ideal for office buildings, apartment complexes, malls and shopping centers, schools, churches, and industrial buildings.
- Stainless steel face plate
- Standard inlet connection combination 3/4" female solder x 3/4" male pipe thread.

MODEL NUMBER	WALL THICKNESS IN INCHES [MM]	APPROX. WT. LB [KG]	LIST PRICE EACH
Z1330-C	6" [152 mm]	6 lb [3 kg]	766.00

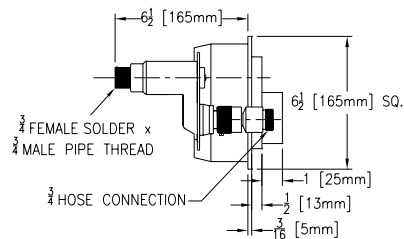


SUFFIX	DESCRIPTION	ADD
-CL	Cylinder Lock	73.00
-NB	Polished Nickel Bronze Box	112.00
-PB	Polished Bronze Box and Faceplate	112.00
-RK	Hydrant Repair Kit (HYD-RK-Z1330-C/33-C)	95.00
-SS	Stainless Steel Box	N/C
-34EL	3/4" 90° Solder Inlet Elbow	42.00
-34FIP	3/4" IP Straight Female Inlet Adapter	42.00

Z1330-C-BFP MODERATE CLIMATE ECOLOTROL WALL HYDRANT



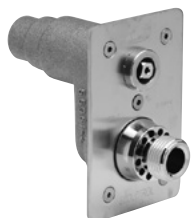
- Encased, self-draining, anti-siphon wall hydrant for moderate climate and interior wall installation. Complete with hose connection backflow preventer and integral vacuum breaker.
- Ideal for office buildings, apartment complexes, malls and shopping centers, schools, churches, and industrial buildings.
- Standard inlet connection combination 3/4" female solder x 3/4" male pipe thread.



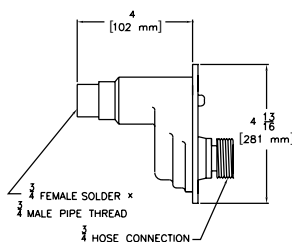
MODEL NUMBER	WALL THICKNESS IN INCHES [MM]	APPROX. WT. LB [KG]	LIST PRICE EACH
Z1330-C-BFP	6-1/2" [165 mm]	6 lb [3 kg]	803.00

SUFFIX	DESCRIPTION	ADD
-CL	Cylinder Lock	73.00
-RK	Hydrant Repair Kit (HYD-RK-Z1330-C/33-C)	95.00
-34EL	3/4" 90° Solder Inlet Elbow	42.00
-34FIP	3/4" IP Straight Female Inlet Adapter	42.00

Z1333-C MODERATE CLIMATE ECOLOTROL WALL HYDRANT



- Self-draining wall hydrant with vandal-resistant integral vacuum breaker.
- Designed for commercial applications in moderate climate areas.
- Ideal for office buildings, apartment complexes, malls and shopping centers, schools, churches, and industrial buildings.
- Stainless steel face plate
- Standard inlet connection combination 3/4" female solder x 3/4" male pipe thread.



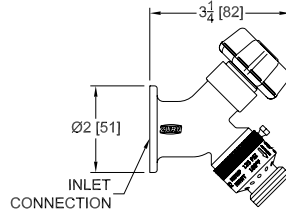
MODEL NUMBER	WALL THICKNESS IN INCHES [MM]	APPROX. WT. LB [KG]	LIST PRICE EACH
Z1333-C	4" [102 mm]	3 lb [1 kg]	347.00

SUFFIX	DESCRIPTION	ADD
-PB	Polished Bronze Faceplate	112.00
-RK	Hydrant Repair Kit (HYR-RK-Z1330-C/33-C)	95.00
-34EL	3/4" 90° Solder Inlet Elbow	42.00
-34FIP	3/4" IP Straight Female Inlet Adapter	42.00

Z1341XL LEAD-FREE WALL FAUCET



- This rough-bronze wall faucet is designed for moderate climate areas.
- Ideal for residential and commercial drainage applications.
- Provided with ASSE 1011 external vacuumbreaker and loose key.



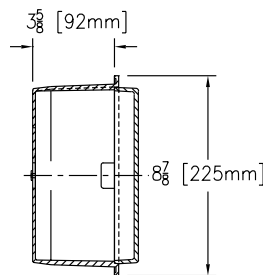
MODEL NUMBER	INLET DESCRIPTION INCHES [MM]	APPROX. WT. LB [KG]	BOX QTY.	LIST PRICE EACH
Z1341XL-C12	1/2" Solder x 3/4" Solder	2 lb [1 kg]	24	124.00
Z1341XL-C12-PX	1/2" [13 mm] PEX	2 lb [1 kg]	24	124.00
Z1341XL-CP12	1/2" Solder x 1/2" MPT	2 lb [1 kg]	24	124.00
Z1341XL-P12	1/2" FPT	2 lb [1 kg]	24	124.00
Z1341XL-P34	3/4" FPT	2 lb [1 kg]	24	124.00

SUFFIX	DESCRIPTION	ADD
-PB	Polished Bronze Finish	112.00
-PC	Polished Chrome Finish	37.00
-RC	Rough Chrome Finish	17.00
-RK	Faucet Repair Kit (HYD-RK-Z1341XL)	95.00

Z1341 WALL FAUCET BOX



- Chrome-plated rough cast bronze box and hinged cover with loose key included



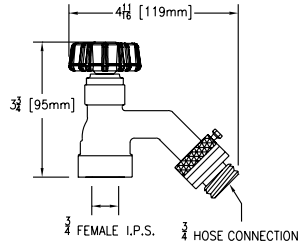
PART NUMBER	DIM. IN INCHES [MM]	APPROX. WT. LB [KG]	BOX QTY.	LIST PRICE EACH
Z1341-BOX	8-7/8" [225 mm] x 3-5/8" [92 mm]	8 lb [4 kg]	1	513.00

SUFFIX	DESCRIPTION	ADD
-CL	Cylinder Lock	73.00

Z1343 LAWN FAUCET



- This rough-bronze lawn faucet is designed for moderate climate areas.
- Ideal for use in lawn, garden, and other residential and commercial drainage applications.
- Provided with ASSE 1011 external vacuumbreaker and loose key.
- Standard inlet connection 3/4" [19mm] female pipe thread.
- Vacuum breaker approved under: IAPMO, cUPC, and ASSE 1011 listed.



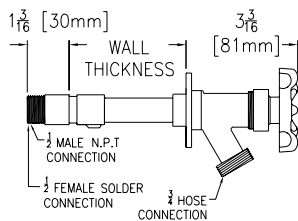
SUFFIX	DESCRIPTION	ADD
-PB	Polished Bronze Finish	112.00
-PC	Polished Chrome Finish	37.00
-RC	Rough Chrome Finish	17.00
-RK	Faucet Repair Kit (HYD-RK-Z1341XL)	95.00

Z1344 WALL FAUCET



- Recommended for commercial drainage and residential installations.
- Ideal for gas stations, convenience stores, strip malls, churches, and other commercial drainage applications.
- Standard inlet connection combination 1/2" female solder x 1/2" male IP.
- -PX inlet configuration is 1/2" PEX tube fitting.
- -CP3 inlet configuration combination is 3/4" male pipe thread x 3/4" female sweat.

MODEL NUMBER	WALL THICKNESS IN INCHES [MM]	APPROX. WT. LB [KG]	LIST PRICE EACH
Z1344-04	4" [102 mm]	3 lb [1 kg]	67.00
Z1344-06	6" [152 mm]	3 lb [1 kg]	71.00
Z1344-08	8" [203 mm]	3 lb [1 kg]	73.00
Z1344-10	10" [254 mm]	4 lb [1 kg]	76.00
Z1344-12	12" [305 mm]	4 lb [1 kg]	84.00
Z1344-04-PX	4" [102 mm]	3 lb [1 kg]	67.00
Z1344-06-PX	6" [152 mm]	3 lb [1 kg]	71.00
Z1344-08-PX	8" [203 mm]	3 lb [1 kg]	73.00
Z1344-10-PX	10" [254 mm]	4 lb [1 kg]	76.00
Z1344-12-PX	12" [305 mm]	4 lb [1 kg]	84.00
Z1344-04-CP3	4" [102 mm]	3 lb [1 kg]	68.00
Z1344-06-CP3	6" [152 mm]	3 lb [1 kg]	76.00
Z1344-08-CP3	8" [203 mm]	3 lb [1 kg]	75.00
Z1344-10-CP3	10" [254 mm]	4 lb [1 kg]	80.00
Z1344-12-CP3	12" [305 mm]	4 lb [1 kg]	84.00



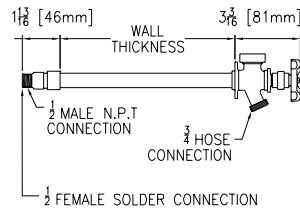
SUFFIX	DESCRIPTION	ADD
-VB	Vacuum Breaker	37.00

Z1345 WALL FAUCET



- This commercial drainage/residential wall faucet with integral vacuum breaker is designed for gas stations, convenience stores, strip malls, churches, and other commercial drainage applications.
- To assure drainage, turn faucet handle to close position and detach hose from spout during freezing weather. If hose is left attached, the frost-proof hydrant cannot drain properly and trapped water may freeze and damage the hydrant.
- Standard inlet connection combination 1/2" female solder x 1/2" male IP.
- -PX inlet configuration is 1/2" PEX tube fitting.
- -CP3 inlet configuration combination is 3/4" male pipe thread x 3/4" female sweat.

MODEL NUMBER	WALL THICKNESS IN INCHES [MM]	APPROX. WT. LB [KG]	LIST PRICE EACH
Z1345-04	4" [102 mm]	3 lb [1 kg]	81.00
Z1345-06	6" [152 mm]	3 lb [1 kg]	86.00
Z1345-08	8" [203 mm]	3 lb [1 kg]	90.00
Z1345-10	10" [254 mm]	4 lb [2 kg]	94.00
Z1345-12	12" [305 mm]	4 lb [2 kg]	98.00
Z1345-14	14" [356 mm]	4 lb [2 kg]	110.00
Z1345-04-PX	4" [102 mm]	3 lb [1 kg]	81.00
Z1345-06-PX	6" [152 mm]	3 lb [1 kg]	86.00
Z1345-08-PX	8" [203 mm]	3 lb [1 kg]	90.00
Z1345-10-PX	10" [254 mm]	4 lb [2 kg]	94.00
Z1345-12-PX	12" [305 mm]	4 lb [2 kg]	98.00
Z1345-14-PX	14" [356 mm]	4 lb [2 kg]	110.00
Z1345-04-CP3	4" [102 mm]	3 lb [1 kg]	88.00
Z1345-06-CP3	6" [152 mm]	3 lb [1 kg]	89.00
Z1345-08-CP3	8" [203 mm]	3 lb [1 kg]	98.00
Z1345-10-CP3	10" [254 mm]	4 lb [2 kg]	98.00
Z1345-12-CP3	12" [305 mm]	4 lb [2 kg]	100.00
Z1345-14-CP3	14" [356 mm]	4 lb [2 kg]	112.00



SUFFIX	DESCRIPTION	ADD
-HG	Hydrant Guard	POA
-HGS	Hydrant Guard Stem	POA
-RK	Faucet Repair Kit (HYD-RK-Z1345)	95.00

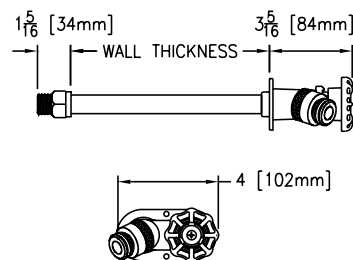
Z1346 WALL FAUCET



- Self-draining wall hydrant with vandal-resistant integral vacuum breaker is designed for commercial applications in moderate climate areas.
- Ideal for office buildings, apartment complexes, malls and shopping centers, schools, churches, and industrial buildings.

MODEL NUMBER	WALL THICKNESS IN INCHES [MM]	APPROX. WT. LB [KG]	LIST PRICE EACH
Z1346-04	4" [102 mm]	3 lb [1 kg]	145.00
Z1346-06	6" [152 mm]	3 lb [1 kg]	148.00
Z1346-08	8" [203 mm]	3 lb [1 kg]	152.00
Z1346-10	10" [254 mm]	4 lb [2 kg]	156.00
Z1346-12	12" [305 mm]	4 lb [2 kg]	161.00
Z1346-14	14" [356 mm]	4 lb [2 kg]	165.00
Z1346-16	16" [406 mm]	4 lb [2 kg]	163.00
Z1346-18	18" [457 mm]	5 lb [2 kg]	173.00
Z1346-20	20" [508 mm]	5 lb [2 kg]	179.00
Z1346-22	22" [559 mm]	6 lb [3 kg]	183.00
Z1346-24	24" [610 mm]	7 lb [3 kg]	188.00
Z1346-04-PX	4" [102 mm]	3 lb [1 kg]	138.00
Z1346-06-PX	6" [152 mm]	3 lb [1 kg]	141.00
Z1346-08-PX	8" [203 mm]	3 lb [1 kg]	152.00
Z1346-10-PX	10" [254 mm]	4 lb [2 kg]	156.00
Z1346-12-PX	12" [305 mm]	4 lb [2 kg]	161.00
Z1346-14-PX	14" [356 mm]	4 lb [2 kg]	165.00
Z1346-16-PX	16" [406 mm]	4 lb [2 kg]	129.00
Z1346-18-PX	18" [457 mm]	5 lb [2 kg]	173.00
Z1346-20-PX	20" [508 mm]	5 lb [2 kg]	179.00
Z1346-22-PX	22" [559 mm]	6 lb [3 kg]	182.00
Z1346-24-PX	24" [610 mm]	7 lb [3 kg]	188.00

MODEL NUMBER	WALL THICKNESS IN INCHES [MM]	APPROX. WT. LBS. [KG]	LIST PRICE EACH
Z1346-04-CP3	4" [102 mm]	3 lb [1 kg]	151.00
Z1346-06-CP3	6" [152 mm]	3 lb [1 kg]	154.00
Z1346-08-CP3	8" [203 mm]	3 lb [1 kg]	157.00
Z1346-10-CP3	10" [254 mm]	4 lb [2 kg]	163.00
Z1346-12-CP3	12" [305 mm]	4 lb [2 kg]	173.00
Z1346-14-CP3	14" [356 mm]	4 lb [2 kg]	179.00
Z1346-16-CP3	16" [406 mm]	4 lb [2 kg]	183.00
Z1346-18-CP3	18" [457 mm]	5 lb [2 kg]	188.00
Z1346-20-CP3	20" [508 mm]	5 lb [2 kg]	193.00
Z1346-22-CP3	22" [559 mm]	6 lb [3 kg]	196.00
Z1346-24-CP3	24" [610 mm]	7 lb [3 kg]	200.00



Z1348-BFP WALL FAUCET



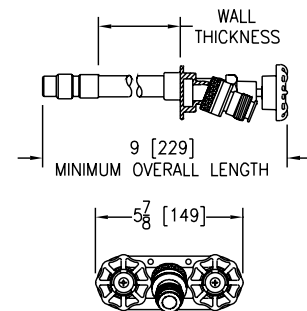
- Standard inlet connection combination 1/2" female solder x 1/2" male IP.
- -PX inlet configuration is 1/2" PEX tube fitting.
- -CP3 inlet configuration combination is 3/4" male pipe thread x 3/4" female sweat.
- Backflow preventer approved under: ASSE 1052 listed.

- Light commercial/residential exposed, non-freeze, dual hot and cold wall faucet with an external, automatic draining backflow preventer. It is ideal for applications such as residential homes, apartment complexes, gas stations, convenience stores, strip malls, churches, and other commercial drainage applications.
- To assure drainage, turn faucet handle to close position and detach hose from spout during freezing weather. If hose is left attached, the frost-proof hydrant cannot drain properly and trapped water may freeze and damage the hydrant.

MODEL NUMBER	WALL THICKNESS IN INCHES [MM]	LIST PRICE EACH
Z1348-BFP-04	4" [102 mm]	227.00
Z1348-BFP-06	6" [152 mm]	235.00
Z1348-BFP-08	8" [203 mm]	241.00
Z1348-BFP-10	10" [254 mm]	252.00
Z1348-BFP-12	12" [305 mm]	259.00
Z1348-BFP-14	14" [356 mm]	268.00
Z1348-BFP-16	16" [406 mm]	284.00
Z1348-BFP-18	18" [457 mm]	288.00
Z1348-BFP-20	20" [508 mm]	293.00
Z1348-BFP-22	22" [559 mm]	301.00
Z1348-BFP-24	24" [610 mm]	308.00
Z1348-BFP-04-PX	4" [102 mm]	217.00
Z1348-BFP-06-PX	6" [152 mm]	226.00
Z1348-BFP-08-PX	8" [203 mm]	231.00
Z1348-BFP-10-PX	10" [254 mm]	252.00
Z1348-BFP-12-PX	12" [305 mm]	259.00
Z1348-BFP-14-PX	14" [356 mm]	265.00
Z1348-BFP-16-PX	16" [406 mm]	284.00
Z1348-BFP-18-PX	18" [457 mm]	277.00
Z1348-BFP-20-PX	20" [508 mm]	252.00
Z1348-BFP-22-PX	22" [559 mm]	290.00
Z1348-BFP-24-PX	24" [610 mm]	296.00

MODEL NUMBER	WALL THICKNESS IN INCHES [MM]	LIST PRICE EACH
Z1348-BFP-04-CP3	4" [102 mm]	224.00
Z1348-BFP-06-CP3	6" [152 mm]	229.00
Z1348-BFP-08-CP3	8" [203 mm]	238.00
Z1348-BFP-10-CP3	10" [254 mm]	256.00
Z1348-BFP-12-CP3	12" [305 mm]	265.00
Z1348-BFP-14-CP3	14" [356 mm]	261.00
Z1348-BFP-16-CP3	16" [406 mm]	278.00
Z1348-BFP-18-CP3	18" [457 mm]	292.00
Z1348-BFP-20-CP3	20" [508 mm]	298.00
Z1348-BFP-22-CP3	22" [559 mm]	306.00
Z1348-BFP-24-CP3	24" [610 mm]	312.00

SUFFIX	DESCRIPTION	ADD
-RK	Faucet Repair Kit (HYD-RK-Z1348)	95.00

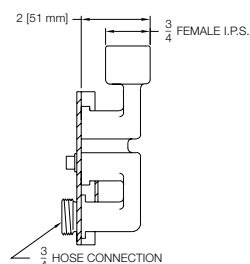


Z1349 NARROW WALL HYDRANT



- This bronze, narrow wall hydrant is designed for moderate climate areas.
- All-bronze body fits within a wall thickness of 4 inches.
- Ideal for commercial applications.
- Standard inlet connection 3/4" female IP.
- Approved under: City of LA listed.

MODEL NUMBER	CONNECTION DESCRIPTION INCHES [MM]	APPROX. WT. LB [KG]	BOX QTY.	LIST PRICE EACH
Z1349	3/4" Hose Connection	2 lb [1 kg]	4	315.00



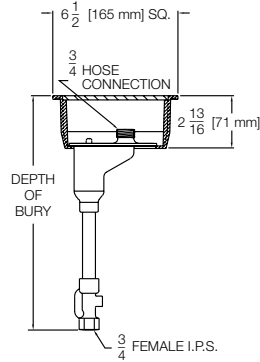
SUFFIX	DESCRIPTION	ADD
-RK	Hydrant Repair Kit (HYD-RK-Z1350)	95.00
-VB	Vacuum Breaker	37.00

Z1361 ENCASED GROUND HYDRANT



MODEL NUMBER	DEPTH OF BURY (FT. [CM])	APPROX. WT. LB [KG]	LIST PRICE EACH
Z1361-02	2' [61 cm]	17 lb [8kg]	1005.00
Z1361-03	3' [91 cm]	21 lb [10 kg]	1021.00
Z1361-04	4' [122 cm]	25 lb [11 kg]	1037.00
Z1361-05	5' [152 cm]	33 lb [15 kg]	1057.00
Z1361-06	6' [183 cm]	39 lb [18 kg]	1072.00
Z1361-07	7' [213 cm]	43 lb [20 kg]	1087.00
Z1361-08	8' [244 cm]	47 lb [21 kg]	1103.00

- This scoriated, encased, chrome-finished, non-freeze ground hydrant is designed to be installed flush with grade or finished floor.
- Ideal for golf courses, parks and recreational areas, lawn and garden care, and other landscape needs.
- Standard inlet connection 3/4" female I.P.S.
- 3/4" female hose connection.



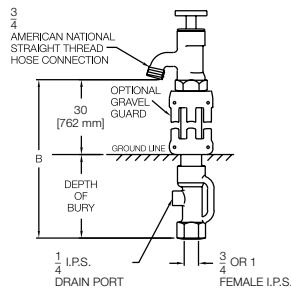
SUFFIX	DESCRIPTION	ADD
-CL	Cylinder Lock	73.00
-RK	Hydrant Repair Kit (HYD-RK-Z1360-70-85)	95.00
-VB	3/4" Adapter Vacuum Breaker	37.00

Z1391 POST HYDRANT



MODEL NUMBER	DEPTH OF BURY (FT. [CM])	APPROX. WT. LB [KG]	LIST PRICE EACH
Z1391-02	2' [61 cm]	25 lb [11 kg]	540.00
Z1391-03	3' [91 cm]	29 lb [13 kg]	555.00
Z1391-04	4' [122 cm]	33 lb [15 kg]	572.00
Z1391-05	5' [152 cm]	37 lb [17 kg]	588.00
Z1391-06	6' [183 cm]	41 lb [19 kg]	607.00
Z1391-07	7' [213 cm]	45 lb [20 kg]	622.00
Z1391-08	8' [244 cm]	49 lb [22 kg]	622.00

- This non-freeze post hydrant is designed for golf courses, parks and recreational areas, lawn and garden care, and other landscape needs.
- Standard inlet connection 3/4" female I.P.S.
- 3/4" female hose connection.



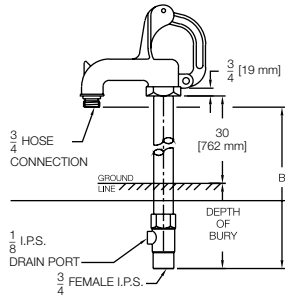
SUFFIX	DESCRIPTION	ADD
-AC	Aluminum Casing Guard	203.00
-HG	Hydrant Guard	POA
-VB	3/4" Adapter Vacuum Breaker	37.00
-WH	Wheel Handle	42.00

Z1396XL LEAD-FREE YARD HYDRANT



- This non-freeze yard hydrant is designed for irrigational applications where immediate water flow, even in sub-zero degree temperatures, is necessary.
- Standard inlet connection 3/4" female I.P.S.
- 3/4" female hose connection.

MODEL NUMBER	DEPTH OF BURY (FT. [CM])	APPROX. WT. LB [KG]	LIST PRICE EACH
Z1396XL-3/4x2	2' [61 cm]	15 lb [7 kg]	222.00
Z1396XL-3/4x3	3' [91 cm]	19 lb [9 kg]	235.00
Z1396XL-3/4x4	4' [122 cm]	23 lb [10 kg]	250.00
Z1396XL-3/4x5	5' [152 cm]	27 lb [12 kg]	264.00
Z1396XL-3/4x6	6' [183 cm]	31 lb [14 kg]	273.00
Z1396XL-3/4x8	8' [244 cm]	39 lb [18 kg]	292.00



SUFFIX	DESCRIPTION	ADD
-AC	Aluminum Casing Guard	203.00
-RK	Hydrant Repair Kit (HYD-RK-Z1395XL)	95.00
-VB	3/4" Adapter Vacuum Breaker	37.00

Z1399XL-BFP LEAD-FREE BACKFLOW PREVENTER



MODEL NUMBER	DESCRIPTION	APPROX. WT. LB [KG]	BOX QUANTITY	LIST PRICE EACH
Z1399XL-BFP	3/4" Hose Connection	1.5 lb [0.5 kg]	25	149.00

- Stainless Steel finish standard.
- Approved under: ASSE 1052 listed.
- For use with all Commercial Drainage hydrants and faucets, excluding Z1348-BFP.

Z1399-HG HYDRANT GUARD



MODEL NUMBER	DESCRIPTION	APPROX. WT. LB [KG]	LIST PRICE EACH
Z1399-HG	Hydrant Guard	1 lb [0.5 kg]	90.00

Z1399-HGS HYDRANT GUARD STEM



MODEL NUMBER	DESCRIPTION	APPROX. WT. LB [KG]	LIST PRICE EACH
Z1399-HGS	Hydrant Guard Stem	2 lb [1 kg]	90.00

Z1399XL-VB VACUUM BREAKER



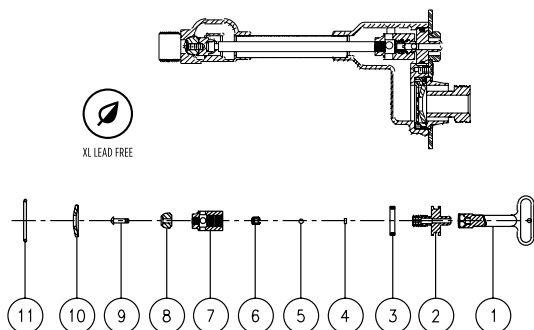
For Non-Freeze Areas

MODEL NUMBER	DESCRIPTION	APPROX. WT. LB [KG]	BOX QTY.	LIST PRICE EACH
Z1399XL-VB	3/4" Hose Connection	1 lb [0.5 kg]	25	44.00

- Stainless Steel finish standard.
- Approved under: IAPMO, cUPC, and ASSE 1011 listed.



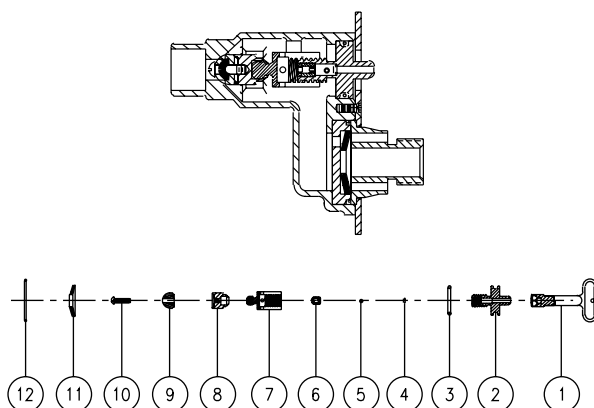
Z1320-CXL/Z1320-CXL-BFP/Z1321-CXL - REPAIR KIT



PART NUMBER	LIST PRICE
HYD-RK-Z1321-CXL	110.00

ITEM	DESCRIPTION	PART NO.
1	Key	59546-001-9
2	Operating Screw	25049-XL-22
3	O-Ring	23750-028-8
4	Ball O-Ring	23750-232-8
5	Ball	51458-001-5
6	Setscrew	51459-001-5
7	Operating Coupling	25147-XL-13
8	Washer	56651-001-8
9	Screw #10-24 N.C.	14853-045-5
10	"Equa-Balance" Seal	50785-001-8
11	Disc O-Ring	23750-204-8

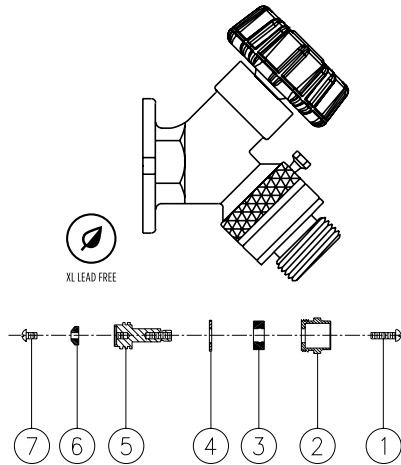
Z1330-C/Z1330-C-BFP/Z1333-C - REPAIR KIT



PART NO.	LIST PRICE
HYD-RK-Z1330-C/33-C	293.00

ITEM	DESCRIPTION	PART NO.
1	Key	59546-001-0
2	Operating Screw	25049-002-2
3	O-Ring	23750-028-8
4	Ball O-Ring	23750-232-8
5	Ball	51458-001-5
6	Setscrew	51459-001-3
7	Operating Coupling	25247-001-3
8	Washer Guide	25050-002-3
9	Washer	56651-001-8
10	Screw #10-24 N.C.	14853-045-3
11	"Equa-Balance" Seal	50785-001-8
12	Disc O-Ring	23750-204-8

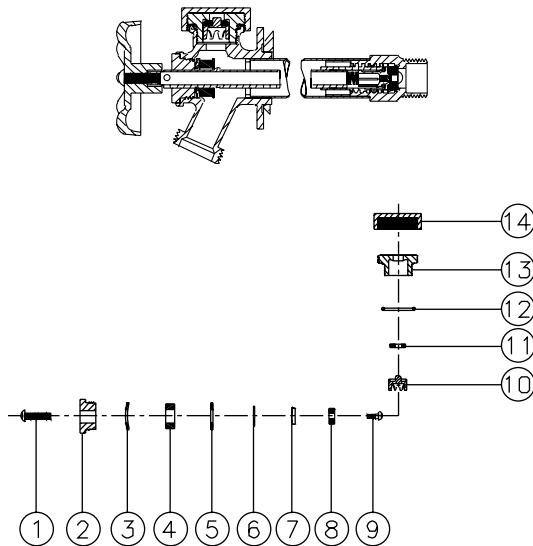
Z1341XL/Z1343 REPAIR KIT



PART NO.	LIST PRICE
HYD-RK-Z1341XL	39.00

ITEM	DESCRIPTION	PART NO.
1	Handle Screw	14853-046-3
2	Packing Nut	59469-001-3
3	Fiber Packing	59544-001-9
4	Washer	60081-XL1-3
5	Operating Screw	59470-XL1-3
6	Neoprene Washer	59468-001-8
7	Retaining Screw	14853-041-3

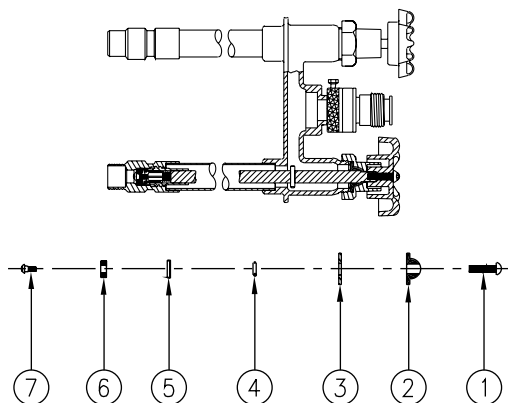
Z1345 REPAIR KIT



PART NO.	LIST PRICE
HYD-RK-Z1345	40.00

ITEM	DESCRIPTION	PART NO.
1	Handle Screw	14853-046-3
2	Packing Nut	59474-001-3
3	Concave Washer	66279-001-3
4	Packing	60823-001-8
5	Washer	14859-001-3
6	Diaphragm	23443-048-8
7	Seat Casing	59475-001-3
8	Rubber Washer	23443-046-8
9	Washer Screw	56447-015-3
10	Float	59479-001-9
11	Float Washer	23443-047-8
12	O-Ring	23750-239-8
13	Binnet	59478-001-9
14	Vacuum Breaker Cap	59477-001-3

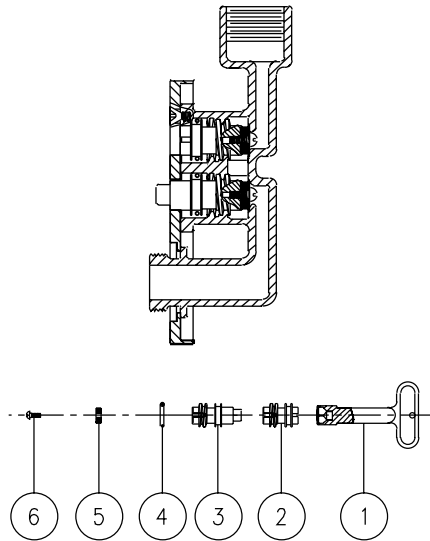
Z1348 REPAIR KIT



PART NO.	LIST PRICE
HYD-RK-Z1348	54.00

ITEM	DESCRIPTION	PART NO.
1	Handle Screw	14853-046-3
2	Gasket	66277-001-8
3	Washer	14859-003-3
4	O-Ring	23750-203-8
5	Seating Casing	59475-001-3
6	Rubber Washer	23443-046-8
7	Washer Screw	56447-015-3

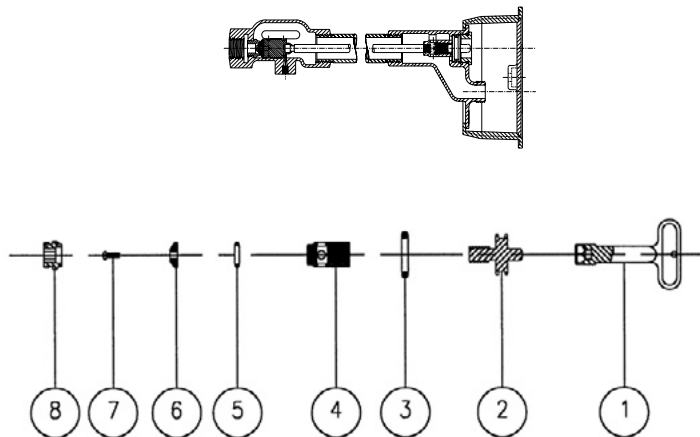
Z1350 REPAIR KIT



PART NO.	LIST PRICE
HYD-RK-Z1350	91.00

ITEM	DESCRIPTION	PART NO.
1	Key	59546-001-0
2	Stop Plunger	56512-002-3
3	Operating Plunger	56512-001-3
4	O-Ring (2)	23750-313-8
5	Teflon Washer (2)	56513-001-9
6	Screw #6-32 N.C. (2)	14853-016-3

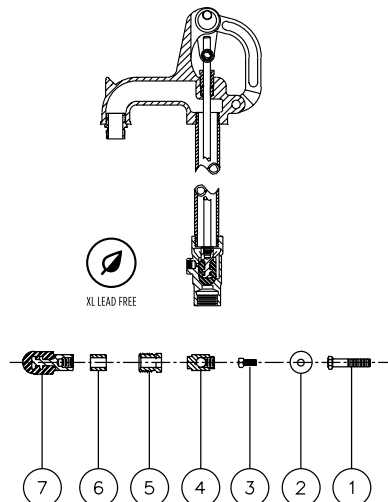
Z1361 REPAIR KIT



PART NO.	LIST PRICE
HYD-RK-Z1360-70-85	112.00

ITEM	DESCRIPTION	PART NO.
1	Key	59546-001-0
2	Operating Screw	25049-001-3
3	O-Ring	23750-028-8
4	Operating Coupling	25147-001-3
5	O-Ring (2)	23750-036-8
6	Washer	23075-001-8
7	Screw #10-24 N.C.	14853-042-3
8	Removable Seat	25262-001-3

Z1396XL REPAIR KIT



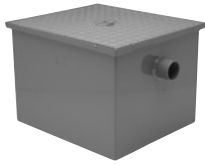
PART NO.	LIST PRICE
HYD-RK-Z1396XL	98.00

ITEM	DESCRIPTION	PART NO.
1	Handle Cap Screw	26050-009-5
2	Push Nut	56467-001-5
3	Setscrew 3/8 -16 Sq. Hd.	14857-018-5
4	Pivot Link	56216-001-5
5	Nut	56202-001-3
6	Packing	56227-001-9
7	Plunger Assembly	56252-XL1-8

INTERCEPTORS

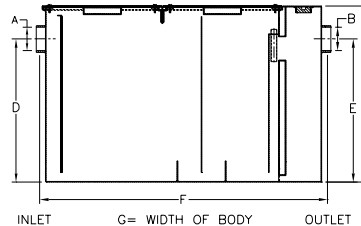
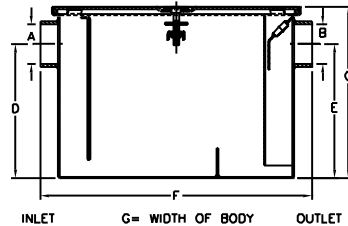
GT2700-EXT GREASE INTERCEPTOR EXTENSIONS – 6"	62
GT2701 LOW-PROFILE GREASE INTERCEPTOR	63
GT2702 POLYETHYLENE GREASE INTERCEPTOR	64
GT2702-6-EXT GREASE INTERCEPTOR - 6" EXTENSION	64
Z843M1 SERVICE SINK FAUCET	66

GT2700 GREASE INTERCEPTOR



- Recommended for removing and retaining grease from wastewater in kitchen and restaurant areas where food is prepared.
- Grease interceptor is corrosion-resistant coated fabricated steel with no-hub connections, slip-resistant cover, flow diffusing baffle, integral trap, and external vented inlet flow control device.
- Grease interceptor is furnished with no-hub inlet and outlet as standard connections. IP connections are available upon request.

- Inlet and outlet sizes shown indicate standard operating sizes and flow control settings. The -20 and -25 can be reduced to 2" and the -35 and -50 can be reduced to 3".
If changed, flow control must be adjusted accordingly.
- 3/8" Allen bolt lift handle assembly.
- Gasket for interceptor – Order P1170-GSKT-MATL
- **Note:** For sizing method, visit www.zurn.ca.



MODEL NUMBER	FLOW RATE GPM [L/M]	GREASE CAPACITY LB [KG]	DIMENSIONS IN INCHES [MM]							WATER CAPACITY GAL. [L]	WEIGHT LB [KG]	NH PRICE EACH	IP PRICE EACH
			A	B	C	D/E	F	G	H				
GT2700-04	4 [15L]	8 lb [4 kg]	2" [51 mm]	2" [51 mm]	10" [254 mm]	7-1/4" [184 mm]	15-7/8" [403 mm]	9-7/8" [251 mm]	2-3/4" [70 mm]	4 [15 L]	23 lb [10 kg]	592.00	603.00
GT2700-07	7 [26 L]	14 lb [6 kg]	2" [51 mm]	2" [51 mm]	11-1/8" [283 mm]	8-1/8" [206 mm]	17-1/4" [438 mm]	11-7/8" [302 mm]	3" [76 mm]	6 [23 L]	28 lb [13 kg]	708.00	720.00
GT2700-10	10 [38L]	20 lb [9 kg]	2" [51 mm]	2" [51 mm]	11-3/4" [298 mm]	8-1/4" [210 mm]	19-1/4" [489 mm]	14" [356 mm]	3-1/2" [89 mm]	8 [30 L]	34 lb [15 kg]	892.00	910.00
GT2700-15	15 [57 L]	30 lb [14 kg]	2" [51 mm]	2" [51 mm]	13-3/8" [340 mm]	9-3/8" [238 mm]	21-1/4" [540 mm]	16-3/4" [425 mm]	4" [102 mm]	13 [49 L]	43 lb [20 kg]	958.00	974.00
GT2700-20	20 [76 L]	40 lb [18 kg]	3" [76 mm]	3" [76 mm]	15" [381 mm]	11-3/4" [298 mm]	24-1/8" [613 mm]	17-1/4" [438 mm]	3-1/4" [83 mm]	18 [68 L]	65 lb [29 kg]	1,189.00	1,212.00
GT2700-25	25 [95 L]	50 lb [23 kg]	3" [76 mm]	3" [76 mm]	17" [432 mm]	12-1/2" [318 mm]	26-1/8" [664 mm]	19-7/8" [505 mm]	4-1/2" [114 mm]	24 [91 L]	70 lb [32 kg]	1,606.00	1,634.00
GT2700-35	35 [132 L]	70 lb [32 kg]	4" [102 mm]	4" [102 mm]	18-3/4" [476 mm]	14-1/4" [362 mm]	28" [711 mm]	22-1/2" [572 mm]	4-1/2" [114 mm]	33 [125 L]	90 lb [41 kg]	1,925.00	1,958.00
GT2700-50	50 [189 L]	100 lb [45 kg]	4" [102 mm]	4" [102 mm]	21-1/2" [546 mm]	16" [406 mm]	29-7/8" [759 mm]	24-1/2" [622 mm]	5-1/2" [140 mm]	44 [167 L]	106 lb [48 kg]	2,201.00	2,241.00
GT2700-75	75 [284 L]	150 lb [68 kg]	4" [102 mm]	4" [102 mm]	22-3/4" [578 mm]	18-1/2" [470 mm]	36" [914 mm]	28-5/8" [727 mm]	4-1/4" [108 mm]	65 [240 L]	316 lb [143 kg]	4,170.00	N/A
GT2700-100	100 [374 L]	200 lb [91 kg]	4" [102 mm]	4" [102 mm]	27" [686 mm]	23" [584 mm]	42-3/4" [1086 mm]	33-5/8" [854 mm]	4" [102 mm]	110 [416 L]	408 lb [185 kg]	5,633.00	N/A

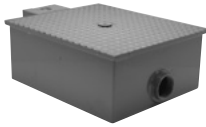
GT2700-EXT GREASE INTERCEPTOR EXTENSIONS - 6"



- Available in standard 6" increments.
- Ability to use more than one (stackable).
- Special size extensions are available on a made-to-order basis.

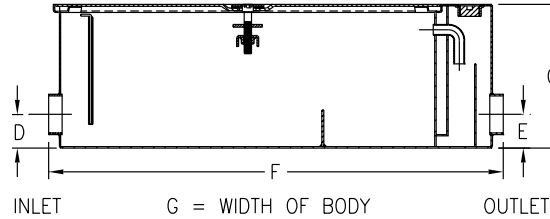
MODEL NUMBER	WEIGHT-LB [KG]	LIST PRICE EACH
GT2700-04-6-EXT	11 lb [5 kg]	467.00
GT2700-07-6-EXT	13 lb [6 kg]	524.00
GT2700-10-6-EXT	15 lb [7 kg]	665.00
GT2700-15-6-EXT	17 lb [8 kg]	701.00
GT2700-20-6-EXT	19 lb [9 kg]	758.00
GT2700-25-6-EXT	21 lb [10 kg]	815.00
GT2700-35-6-EXT	23 lb [10 kg]	955.00
GT2700-50-6-EXT	25 lb [11 mm]	1,516.00
GT2700-75-6-EXT	27 lb [12 mm]	4,587.00
GT2700-100-6-EXT	30 lb [14 mm]	2,909.00

GT2701 LOW-PROFILE GREASE INTERCEPTOR



- Recommended for removing and retaining grease from wastewater in kitchen and restaurant areas where food is prepared.
- Designed to be installed under the sink or in an area where space is limited.

- Grease interceptor is corrosion-resistant coated fabricated steel with no-hub connections, flow diffusing baffle, integral trap, and vented inlet flow control device.
- **Note:** For sizing method, visit www.zurn.ca.



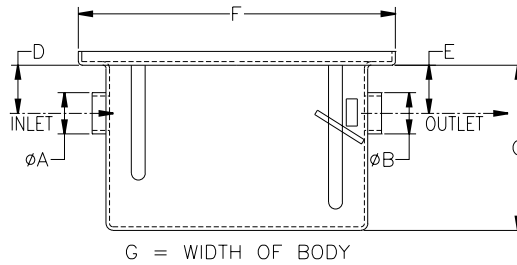
MODEL NUMBER	FLOW RATE GPM [L/M]	GREASE CAPACITY LB [KG]	DIMENSIONS IN INCHES [MM]								WATER CAPACITY GAL. [L]	WEIGHT LB [KG]	NH PRICE EACH	IP PRICE EACH
			A	B	C	D	E	F	G					
GT2701-20	20 [76 L]	40 lb [18 kg]	3" [76 mm]	3" [76 mm]	10" [254 mm]	3-1/8" [79 mm]	3-1/8" [79 mm]	31" [787 mm]	21-1/8" [537 mm]	15 [57 L]	102 lb [46 kg]		1,587.00	1,618.00
GT2701-35	35 [132 L]	70 lb [32 kg]	4" [102 mm]	4" [102 mm]	10-3/4" [273 mm]	3-1/8" [79 mm]	3-1/8" [79 mm]	42-1/8" [1070 mm]	29-3/8" [746 mm]	30 [116 L]	172 lb [78 kg]		2,576.00	2,626.00
GT2701-50	50 [189 L]	100 lb [45 kg]	4" [102 mm]	4" [102 mm]	16" [406 mm]	10" [254 mm]	10" [254 mm]	49-1/2" [1257 mm]	29-3/8" [746 mm]	45 [170 L]	210 lb [96 kg]		2,973.00	3,026.00

GT2702 POLYETHYLENE GREASE INTERCEPTOR



- Recommended for removing and retaining grease from wastewater in kitchen and restaurant areas where food is prepared.
- Constructed of non-corrosive polyethylene, the interceptor handles continuous temperatures to 212°.

- Interceptor is furnished with NPT connections, removable flow diffusing baffles, and external vented flow control device.
- For underground applications, concrete wall recommended.
- **Note:** For sizing method, visit www.zurn.ca.



PRODUCT NUMBER	'A' AND 'B' CONNECTIONS
GT2702-04	2" [51 mm] Female FPT
GT2702-07	2" [51 mm] Female FPT
GT2702-10	2" [51 mm] Female FPT
GT2702-15	2" [51 mm] Female FPT
GT2702-20	2" [51 mm] Female FPT
GT2702-25	3" [76 mm] Female FPT
GT2702-35	3" [76 mm] Female FPT
GT2702-50	3" [76 mm] Female FPT

MODEL NUMBER	FLOW RATE GPM [L/M]	GREASE CAPACITY LB [KG]	DIMENSIONS IN INCHES [MM]					WEIGHT LB [KG]	LIST PRICE EACH
			C	D	E	F	G		
GT2702-04	4 [15 L]	8 lb [4 kg]	9-1/2" [241 mm]	2" [51 mm]	2" [51 mm]	15" [381 mm]	10" [254 mm]	10 lb [5 kg]	661.00
GT2702-07	7 [26 L]	14 lb [6 kg]	11" [279 mm]	3-1/4" [83 mm]	3-1/4" [83 mm]	20" [508 mm]	14-1/2" [368 mm]	15 lb [7 kg]	870.00
GT2702-10	10 [38 L]	20 lb [9 kg]	12" [305 mm]	3-1/2" [89 mm]	3-1/2" [89 mm]	23" [584 mm]	14-1/2" [368 mm]	18 lb [8 kg]	994.00
GT2702-15	15 [57 L]	30 lb [14 kg]	13" [330 mm]	3-1/2" [89 mm]	3-1/2" [89 mm]	23" [584 mm]	19-1/2" [495 mm]	25 lb [11 kg]	1,135.00
GT2702-20	20 [76 L]	40 lb [18 kg]	14" [356 mm]	3-1/2" [89 mm]	3-1/2" [89 mm]	29" [737 mm]	19-1/2" [495 mm]	30 lb [14 kg]	1,320.00
GT2702-25	25 [95 L]	50 lb [23 kg]	17" [432 mm]	4" [102 mm]	4" [102 mm]	32-1/2" [826 mm]	19-1/2" [495 mm]	35 lb [16 kg]	1,786.00
GT2702-35	35 [132 L]	70 lb [32 kg]	18" [457 mm]	4" [102 mm]	4" [102 mm]	32-1/2" [826 mm]	22" [559 mm]	40 lb [18 kg]	2,144.00
GT2702-50	50 [189 L]	100 lb [45 kg]	18" [457 mm]	4" [102 mm]	4" [102 mm]	37" [940 mm]	25" [635 mm]	50 lb [23 kg]	2,508.00
GT2702-75	75 [284 L]	150 lb [68 kg]	25" [635 mm]	5-3/4" [146 mm]	5-3/4" [146 mm]	44-1/4" [1124 mm]	25" [635 mm]	55 lb [25 kg]	3,932.00

GT2702-6-EXT GREASE INTERCEPTOR - 6" EXTENSION

MODEL NUMBER	LIST PRICE EACH
GT2702-20-6-EXT	683.00
GT2702-25-6-EXT	694.00
GT2702-35-6-EXT	702.00
GT2702-50-6-EXT	829.00

BASINS & SINKS

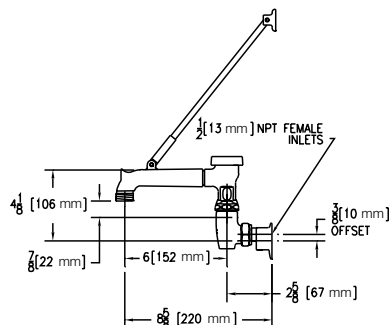
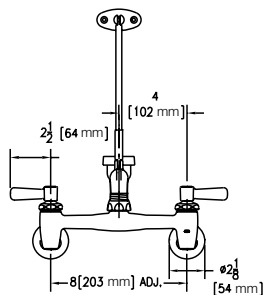
MS2624 COUNTERTOP DROP-IN SINK	66
Z1996 MOP SERVICE BASIN	67
TS2900 TRAP STANDARD	70

Z843M1 SERVICE SINK FAUCET



- Ceramic disc operated cast brass service sink faucet with vacuum breaker and service stops.

MODEL NUMBER	APROX. WT. LB [KG]	BOX QTY.	LIST PRICE EACH
Z843M1	7 lb [4 kg]	6	796.00
Z843M1-RC	7 lb [4 kg]	6	676.00



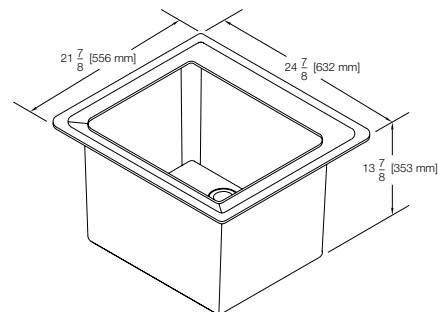
SUFFIX	DESCRIPTION	ADD
-CS	Check Stops	75.00
-WHK	Wall Hook	46.00
-5H	5' [152 cm] Vinyl Hose	44.00

MS2624 COUNTERTOP DROP-IN SINK

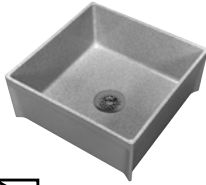


- Self-rimming design.
- Compression molded (SMC) high impact fiberglass/ crushed stone.
- Faucet deck designed to accommodate 4" [102 mm] or 8" [204 mm] centerset faucet with soap dispenser and hose spray.
- Individually packaged.
- 1-1/2" PVC drain assembly.
- Seventeen-gallon water capacity.
- Fits standard 21" [533 mm] x 24" [610 mm] countertop cutout.
- Standard color is appliance white.
- Stain resistant, semi-gloss, easy to clean and maintain.
- Weight: 13 lb [6 kg]

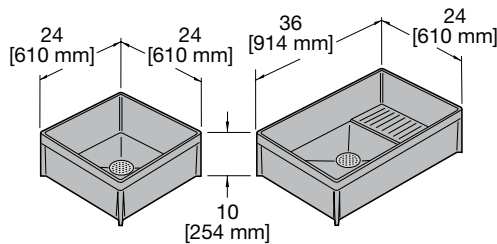
MODEL NUMBER	DESCRIPTION	APPROX. WT. LB [KG]	LIST PRICE EACH
MS2624	Self-rimming Countertop Drop-in Sink	11 lb [6 kg]	179.00



Z1996 MOP SERVICE BASIN



- High-density composite, molded mop basin designed for commercial applications.
- Complete with stainless steel dome strainer/lint basket and a PVC drain with adjustable caulking nut and gasket.
- Model 36 is standard with an integrally molded, self-draining mop shelf where shown.



MODEL NUMBER	DESCRIPTION	DIMENSIONS IN INCHES [MM]		APPROX. WT. LB [KG]	BOX QTY.	LIST PRICE EACH
		'A' CONNECTIONS				
Z1996-24-AW	White Mop Basin	24"	[610 mm] x 24" [610 mm] x 10" [254 mm]	29 lb [13 kg]	1	547.00
Z1996-36-AW	White Mop Basin	36"	[914 mm] x 24" [610 mm] x 10" [254 mm]	38 lb [17 kg]	1	589.00
Z1996-24	Gray Mop Basin	24"	[610 mm] x 24" [610 mm] x 10" [254 mm]	29 lb [13 kg]	1	547.00
Z1996-36	Gray Mop Basin	36"	[914 mm] x 24" [610 mm] x 10" [254 mm]	38 lb [17 kg]	1	589.00

SUFFIX	DESCRIPTION	ADD
-BS	Stainless Steel Bumper Guard - 24" [610 mm] (20-gage type 304 stainless steel)	112.00
-BS	Stainless Steel Bumper Guard - 36" [914 mm] (20-gage type 304 stainless steel)	112.00
-BV	Vinyl Bumper Guard - 24" [610 mm]	49.00
-BV	Vinyl Bumper Guard - 36" [914 mm]	49.00
-HH	Hose and Bracket	68.00
-MH	Mop Hanger - Stainless Steel, 26" Long x 3" Wide with Three Rubber Tool Grips	118.00
-NHG	PVC Drain Gasket Designed for No-Hub pipe-Neoprene gasket facilitates drain installation to cast iron pipe	N/C
-PRP	Pipe Reducer for PVC Drain - Reduces outlet size from 3" to 2" pipe size	38.00
-PRS	Pipe Reducer for Stainless Steel Drain-Reduces outlet size from 3" to 2" pipe size	38.00
-SDL	Stainless Steel Drain with Dome Strainer, Lint Basket, and Locking Nut	93.00
-SF	Service Faucet-Chrome-plated bronze service faucet with vacuum breaker	371.00
-WG	Wall Guard (2 Panels - Indicate Size)	352.00



-BS



-HH



-MH



-SDL



-WG

NOTES

EZTM

FLOOR DRAINS

CLEANOUTS

ROOF DRAINS

HYDRANTS

INTERCEPTORS

BASINS & SINKS

MISCELLANEOUS

MISCELLANEOUS

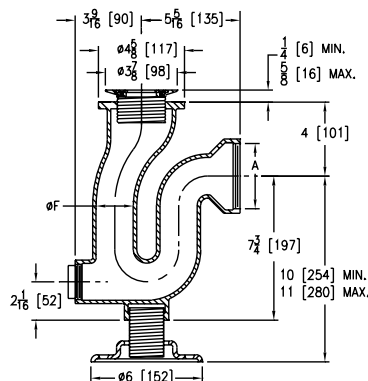
BW2930 BACKWATER VALVE	70
WH2950-XL LEAD-FREE WATER HAMMER ARRESTOR	71
WM2960 WASHING MACHINE VALVE	72
WM2961 ENCASED WASHING MACHINE VALVE	72
UF2970 HORIZONTAL URINAL FLANGE KIT	73
UF2971 SPIGOT FIT URINAL FLANGE KIT	73
CF2988 INSIDE 3" PIPE CLOSET FLANGE	73
CF2988 INSIDE 3" PIPE CLOSET FLANGE	74
CF2991 ZURN FLO-BOWL™ JR.	75
CD4P SPEEDFLEX AIR GAP	76

TS2900 TRAP STANDARD



- Recommended for use with wall mounted service basins.
- Sani-Coated cast iron body with chrome-plated bronze strainer, gasket, and cleanout plug.
- Coated inside.

CONNECTION TYPE	MODEL NUMBER	DIM. IN INCHES [MM]		APPROX. WT. LB [KG]	BOX QTY.	LIST PRICE EACH
		A	F			
IPS	TS2900-IP2	2" [51 mm]	2" [51 mm]	17 lb [8 kg]	1	227.00
IPS	TS2900-IP3	3" [76 mm]	3" [76 mm]	17 lb [8 kg]	1	284.00



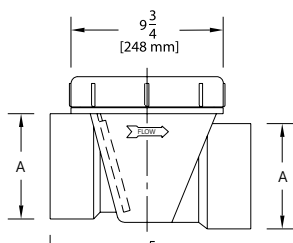
MODEL NUMBER	DESCRIPTION	ADD
JP2900-Top-Assembly	Replacement Head Assembly	56.00

BW2930 BACKWATER VALVE



- Recommended for commercial drainage or residential applications.
- PVC or ABS body is furnished with threaded access cover.
- Complete with valve seat and flapper which hangs closed while not in use.

BODY TYPE	MODEL NUMBER	DIM. IN INCHES [MM]			APPROX. WT. LB [KG]	BOX QTY.	LIST PRICE
		A	B	C			
PVC	BW2930-PV3	3" [76 mm] PVC Solvent Weld	5-3/4" [146 mm]	7-1/2" [191 mm]	8 lb [4 kg]	4	116.00
	BW2930-PV4	4" [102 mm] PVC Solvent Weld	7-5/8" [194 mm]	11-3/8" [289 mm]	8 lb [4 kg]	4	119.00
	BW2930-PV6	6" [152 mm] PVC Solvent Weld	10-3/8" [264 mm]	15-1/2" [394 mm]	10 lb [5 kg]	1	414.00
ABS	BW2930-AB3	3" [76 mm] ABS Solvent Weld	5-3/4" [146 mm]	7-1/2" [191 mm]	8 lb [4 kg]	4	116.00
	BW2930-AB4	4" [102 mm] ABS Solvent Weld	7-5/8" [194 mm]	11-3/8" [289 mm]	8 lb [4 kg]	4	119.00
	BW2930-AB6	6" [152 mm] ABS Solvent Weld	10-3/8" [264 mm]	15-1/2" [394 mm]	10 lb [5 kg]	1	414.00



MODEL NUMBER	DESCRIPTION	LIST PRICE
BW2930-PV3-EXT	3" [76 mm] PVC Backwater Valve with 18" [458 mm] Extension	183.00
BW2930-PV4-EXT	4" [102 mm] PVC Backwater Valve with 18" [458 mm] Extension	190.00

WH2950-XL LEAD-FREE WATER HAMMER ARRESTOR

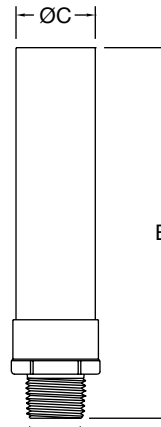


XL LEAD FREE



- Designed to protect water lines from surges during quick valve closure.
- Operating Pressure:
Normal – 60 psig,
Maximum – 85 psig
- Maximum Rated Pressure:
150 psig
- Operating Temperature
Range: 33°F to 180°F

MODEL NUMBER	PDI SIZE	MNPT THREAD	DIM. IN INCHES [MM]		AIR CHAMBER VOLUME IN ³ [CM ³]	FIXTURE UNIT CAP.	APPROX. WT. LB [KG]	LIST PRICE EACH
			A	B				
WH2950-A-XL	A	1/2" [15 mm]	5-1/4" [133 mm]	1-1/8" [29 mm]	3.5 [57]	1-11	1 lb [0.5 kg]	84.00
WH2950-B-XL	B	3/4" [19 mm]	5-5/8" [143 mm]	1-5/8" [41 mm]	4.3 [70]	12-32	2 lb [1 kg]	118.00
WH2950-C-XL	C	1" [25 mm]	7-1/2" [191 mm]	1-5/8" [41 mm]	6.5 [107]	33-60	3 lb [2 kg]	259.00
WH2950-D-XL	D	1" [25 mm]	9-5/16" [237 mm]	1-3/4" [44 mm]	10 [164]	61-113	3 lb [2 kg]	310.00
WH2950-E-XL	E	1" [25 mm]	10-1/4" [260 mm]	2-1/2" [64 mm]	22.4 [367]	114-154	3 lb [2 kg]	443.00
WH2950-F-XL	F	1" [25 mm]	10-7/8" [276 mm]	2-7/8" [73 mm]	34.4 [564]	155-330	4 lb [3 kg]	699.00

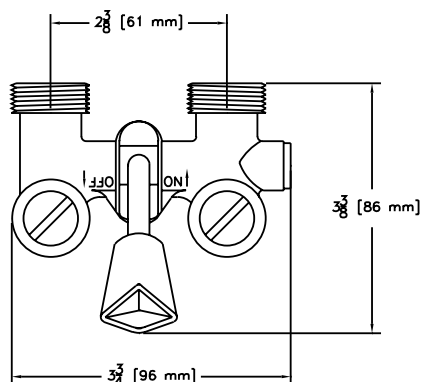


WM2960 WASHING MACHINE VALVE



DIM. IN INCHES [MM]				
MODEL NUMBER	CONNECTIONS	APPROX. WT. LB [KG]	BOX QTY.	LIST PRICE EACH
WM2960-34	3/4" [19 mm] M.I.P. x 1/2" [12 mm] Solder Inlet	2 lb [1 kg]	12	84.00

- Designed to simplify installation and help protect against water damage caused by inlet hose rupture or leak.
- Easy-to-use "water control lever" should be kept in "OFF" position when washing machine is not in use.

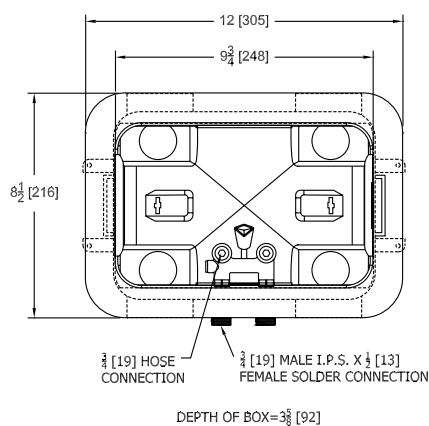


WM2961 ENCASED WASHING MACHINE VALVE



DIM. IN INCHES [MM]				
MODEL NUMBER	CONNECTIONS	APPROX. WT. LB [KG]	BOX QTY.	LIST PRICE EACH
WM2961-34	3/4" [19 mm] M.I.P. x 1/2" [12 mm] Solder Inlet	3 lb [2 kg]	12	93.00

- Designed to improve the overall appearance of the laundry room.
- Each unit comes complete with single lever handle valve, heavy-duty mounting straps, knockouts for a right or left mounting, and a 1-1/2" [38 mm] x 2" [51mm] tailpiece that adapts easily to either ABS or PVC standpipe.

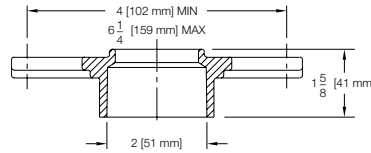


UF2970 HORIZONTAL URINAL FLANGE KIT



- Recommended for commercial drainage applications.
- PVC flange accommodates urinals with 4" [102 mm] to 6" [152 mm] flange mount centers.
- Designed to accept ABS, PVC, galvanized and cast iron pipe.

MODEL NUMBER	APPROX. WT. LB [KG]	BOX QTY.	LIST PRICE EACH
UF2970	1 lb [0.5 kg]	20	37.00

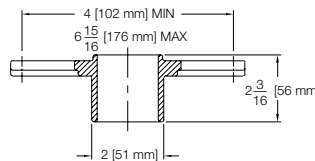


UF2971 SPIGOT FIT URINAL FLANGE KIT



- Recommended for commercial drainage applications.
- PVC flange accommodates urinals with 4" [102mm] to 7" [178mm] flange mount centers.
- Solvent weld connection.

MODEL NUMBER	APPROX. WT. LB [KG]	BOX QTY.	LIST PRICE EACH
UF2971	1 lb [0.5 kg]	20	37.00

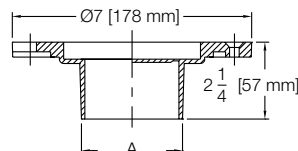


CF2988 INSIDE 3" PIPE CLOSET FLANGE



- Recommended for commercial drainage or residential applications.
- PVC or ABS body is designed to fit inside 3" [76mm] Schedule 40 DWV pipe.

BODY TYPE	MODEL NUMBER	DIM. IN INCHES [MM]		APPROX. WT. LB [KG]	BOX QTY.	LIST PRICE EACH
		A				
PVC	CF2988-PVC	3" [76 mm] x 4" [102 mm] PVC Solvent Weld		1 lb [0.5 kg]	24	14.00

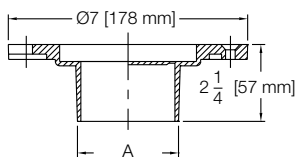


SUFFIX	DESCRIPTION	ADD
-TC	Knock-out Test Cap	8.00

CF2988 INSIDE 3" PIPE CLOSET FLANGE



- Recommended for commercial drainage or residential applications.
- PVC or ABS body is designed to fit inside 3" [76mm] Schedule 40 DWV pipe.



BODY TYPE	MODEL NUMBER	DIM. IN INCHES [MM]		APPROX. WT. LB [KG]	BOX QTY.	LIST PRICE EACH
		A				
PVC	CF2988-PVC	3" [76 mm] x 4" [102 mm] PVC Solvent Weld		1 lb [0.5 kg]	24	14.00

SUFFIX	DESCRIPTION	ADD
-TC	Knock-out Test Cap	8.00



Figure 1



Figure 2

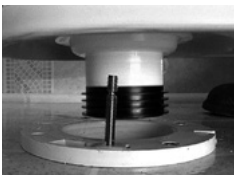


Figure 3

Wax Ring Replacement Seal

Installs In Less Than 60 Seconds

Flo-Bowl Jr. is a direct replacement of the wax ring seal on the bottom of your toilet. Flo-Bowl Jr. will eliminate forever the possibility of water damage to your bathroom floor and/or to the ceiling below if installed on a toilet in an upstairs bathroom.

Flo-Bowl Jr. is a single piece of PVC plastic with a factory 3- or 4-inch multi-ribbed rubber seal on the lower part of the horn adapter, and a non-hardening, instant adhering, rubber sealant ring on the top portion of the horn adapter (Figure 1). The multi-ribbed seal arrangement provides more than one point of contact on the inside of your waste drain pipe to compensate for irregularities on the inside of the pipe. The adhesive ring is flexible; this allows it to conform to the irregularities on the bottom of the toilet. Flo-Bowl Jr. will adapt to both 3- and 4-inch waste pipes.

The combination of the horn adapter, multi-ribbed seal, and the instant non-hardening adhesive totally eliminate the possibility of water leakage, and subsequent property damage, or the escape of harmful sewer gases that form inside of your waste drain pipe.

Flo-Bowl Jr. Benefits

- Lifetime guarantee
- Made in the U.S.A.
- System guaranteed not to leak
- Easy to install
- Not sensitive to temperature
- Reset toilet as many times as needed
- Works where double stacking of wax rings was necessary
- Flo-Bowl Jr. packaging for 3" [76 mm] or 4" [120 mm] applications

Zurn Flo-Bowl Jr. Lifetime Guarantee

Zurn Flo-Bowl Jr. guarantees its product to be free from manufacturing defects under normal use and service for the life of the product from date of purchase.

Flo-Bowl Jr. Installation Instructions

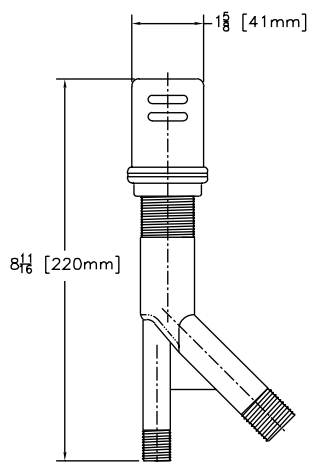
1. Turn off water at shut-off valve. Flush toilet to remove all water. Unbolt the toilet from the floor and disconnect water line. **Carefully** lift the toilet off the floor and place on its side.
2. Remove all foreign matter from area around toilet horn (waste hole) as well as the floor flange. This includes wax ring, dirt, oil, etc. **Note:** Surface around toilet horn must be clean, dry, and residue free. This will ensure a good bonding.
3. Once toilet horn area has been cleaned, position the Flo-Bowl Jr. over the toilet horn and apply firm pressure to ensure a good bond (**Figure 2**).
4. Now carefully lift toilet (be sure not to bump Flo-Bowl Jr.) and reposition toilet over mounting bolts. Lower toilet so that bolts pass through mounting holes (**Figure 3**). Bolt toilet down and reconnect water line.

BODY TYPE	MODEL NUMBER	DIM. IN INCHES [MM]		BOX QTY.	LIST PRICE EACH
		DESCRIPTION			
PVC	CF2991-PV3	3" [76 mm] x 4" [120 mm] Wax Ring Replacement Seal		1	29.00
ABS	CF2991	3" [76 mm] x 4" [120 mm] Wax Ring Replacement Seal		1	30.00

⚠ **WARNING:** Cancer and Reproductive Harm - www.P65Warnings.ca.gov
 ⚠ **ADVERTENCIA:** Cáncer y daño reproductivo - www.P65Warnings.ca.gov
 ⚠ **AVERTISSEMENT:** Cancer et effets néfastes sur la reproduction - www.P65Warnings.ca.gov

CD4P SPEEDFLEX AIR GAP

PART NUMBER	DESCRIPTION	APPROX WT. LB [KG]	LIST PRICE EACH
CD4P	Plastic with Chrome Cap	1/4 lb [0.1 kg]	29.00

**Replacement Parts**

PART NUMBER	DESCRIPTION	LIST PRICE EACH
AGOCCP	Chrome-Plated Outer Cap	10.00
AGPE	Plastic Extension	5.00
AGPIC	Plastic Inner Cap	3.00
AGPLN	Plastic Lock Nut	3.00
AGPSW	Plastic Spacer Washer	3.00
AGRW	Rubber Washer	3.00

ALPHANUMERIC INDEX

BW2930 BACKWATER VALVE	70	FD2275 PVC OR ABS NO-CAULK SHOWER STALL DRAIN	30	Z1330-C/Z1330-C-BFP/Z1333-C – REPAIR KIT	58
CD4P SPEEDFLEX AIR GAP	76	FD2283 SQUARE TOP DECORATIVE FLOOR DRAIN	22	Z1333-C MODERATE CLIMATE ECOLOTROL WALL HYDRANT	50
CF2988 INSIDE 3" PIPE CLOSET FLANGE	73	FD2330 HEAVY-DUTY ADJUSTABLE FLOOR DRAIN	22	Z1341 WALL FAUCET BOX	51
CF2988 INSIDE 3" PIPE CLOSET FLANGE	74	FD2340 MEDIUM-DUTY ADJUSTABLE FLOOR DRAIN	23	Z1341XL LEAD-FREE WALL FAUCET	51
CF2991 ZURN FLO-BOWL™ JR.	75	FD2350 HEAVY-DUTY FLOOR DRAIN	23	Z1341XL/Z1343 REPAIR KIT	59
CO1 ADJUSTABLE FLOOR CLEANOUT	39	FD2360 LARGE CAPACITY FLOOR DRAIN	24	Z1343 LAWN FAUCET	52
CO2 5" TOP ASSEMBLY ADJUSTABLE FLOOR CLEANOUT WITH DECK PLATE	15	FD2375 12" X 12" A.R.E. FLOOR SINK – 6" SUMP DEPTH	33	Z1344 WALL FAUCET	52
CO2 5" TOP ASSEMBLY ADJUSTABLE FLOOR CLEANOUT WITH DECK PLATE	40	FD2376 12" X 12" A.R.E. FLOOR SINK – 8" SUMP DEPTH	33	Z1345 REPAIR KIT	59
CO 3" X 4" ADJUSTABLE FINISHED AREA CLEANOUT	38	FD2377 12" X 12" A.R.E. FLOOR SINK – 10" SUMP DEPTH	34	Z1345 WALL FAUCET	53
CO2450 ADJUSTABLE FLOOR CLEANOUT	41	FD2378 8" X 8" A.R.E. FLOOR SINK – 6" SUMP DEPTH	34	Z1346 WALL FAUCET	54
CO2490 CLEANOUT PLUG – ABS OR PVC	41	FD2380 6" X 6" BELL TRAP DRAIN	31	Z1348-BFP WALL FAUCET	55
CO2521 FINISHED AREA FLOOR ACCESS HOUSING	42	FD2381 9" X 9" BELL TRAP DRAIN	31	Z1348 REPAIR KIT	59
CO2530 ROUND ACCESS COVER	42	FS8 PVC FLOOR SINK	32	Z1349 NARROW WALL HYDRANT	55
EZ1-6 6" TOP ASSEMBLY ADJUSTABLE FLOOR DRAIN WITH DECK PLATE AND EZ1™ TECHNOLOGY	9	FS12 PVC FLOOR SINK	32	Z1350 REPAIR KIT	60
EZ1™ 5" TOP ASSEMBLY ADJUSTABLE FLOOR DRAIN WITH EZ1 TECHNOLOGY	8	GT2700-EXT GREASE INTERCEPTOR EXTENSIONS – 6"	62	Z1361 ENCASED GROUND HYDRANT	56
EZ2 5" TOP ASSEMBLY ADJUSTABLE FLOOR DRAIN WITH DECK PLATE AND EZ1™ TECHNOLOGY	10	GT2700 GREASE INTERCEPTOR	62	Z1361 REPAIR KIT	60
EZ-5 5" TOP ASSEMBLY ADJUSTABLE ON GRADE FLOOR DRAIN WITH EZ1™ TECHNOLOGY	6	GT2701 LOW-PROFILE GREASE INTERCEPTOR	63	Z1391 POST HYDRANT	56
EZ-6 6" TOP ASSEMBLY ADJUSTABLE ON GRADE FLOOR DRAIN WITH EZ1™ TECHNOLOGY	7	GT2702-6-EXT	64	Z1396XL LEAD-FREE YARD HYDRANT	57
EZC2 5" TOP ASSEMBLY ADJUSTABLE FLOOR CLEANOUT WITH DECK PLATE AND EZ1™ TECHNOLOGY	13	GT2702 POLYETHYLENE GREASE INTERCEPTOR	64	Z1396XL REPAIR KIT	60
EZC 5" TOP ASSEMBLY ADJUSTABLE FLOOR CLEANOUT WITH EZ1™ TECHNOLOGY	11	JP2210 PVC OR ABS DRAIN ADAPTOR – USED IN FD2208, FD2209, AND FD2210 MODELS	35	Z1399-HG HYDRANT GUARD	57
EZC-6 6" TOP ASSEMBLY ADJUSTABLE FLOOR CLEANOUT WITH EZ1™ TECHNOLOGY	12	JP2211 PVC OR ABS 3" X 4" DRAIN ADAPTOR – USED IN FD2211, FD2212, AND FD2213 MODELS	35	Z1399-HGS HYDRANT GUARD STEM	57
FD1 ROUND TOPS	19	JP2321 LOW-PROFILE CAST IRON DRAIN ADAPTOR WITH CLAMPING COLLAR – USED IN MODELS FD2321	36	Z1399XL-BFP LEAD-FREE BACKFLOW PREVENTER	57
FD1 SQUARE TOPS	20	JP2322 LOW-PROFILE CAST IRON DRAIN ADAPTOR – USED IN FD2322 MODELS	36	Z1399XL-VB VACUUM BREAKER	58
FD2 5" TOP ASSEMBLY ADJUSTABLE FLOOR DRAIN WITH DECK PLATE	14	MS2624 COUNTERTOP DROP-IN SINK	66	Z1996 MOP SERVICE BASIN	67
FD2 5" TOP ASSEMBLY ADJUSTABLE FLOOR DRAIN WITH DECK PLATE	21	RD2120 MAIN AREA ROOF DRAIN – PVC OR ABS	44		
FD 3" X 4" ADJUSTABLE FLOOR DRAIN	18	RD2130 CAST IRON, COMBINATION ROOF DRAIN AND OVERFLOW	44		
FD2200-NT SMALL AREA FLOOR DRAIN CAST IRON NO-HUB CONNECTION	25	RD2150 REPLACEMENT ROOF DRAIN	45		
FD2200 SMALL AREA FLOOR DRAIN PVC OR ABS SOLVENT WELD CONNECTION	24	TS2900 TRAP STANDARD	70		
FD2201 GENERAL PURPOSE FLOOR DRAIN 2" X 3" PVC OR ABS CONNECTION	25	UF2970 HORIZONTAL URINAL FLANGE KIT	73		
FD2202 GENERAL PURPOSE FLOOR DRAIN 3" X 4" PVC OR ABS CONNECTION	26	UF2971 SPIGOT FIT URINAL FLANGE KIT	73		
FD2210 ADJUSTABLE FLOOR DRAIN	21	WH2950-XL LEAD-FREE WATER HAMMER ARRESTOR	71		
FD2220 MEDIUM-DUTY FLOOR DRAIN	26	WM2960 WASHING MACHINE VALVE	72		
FD2240 WOOD DECK DRAIN CAST IRON NO-HUB CONNECTION	22	WM2961 ENCASED WASHING MACHINE VALVE	72		
FD2254 SHOWER DRAIN – ROUND	27	Z843M1 SERVICE SINK FAUCET	66		
FD2254 SHOWER DRAIN – SQUARE	28	Z1320-CXL-BFP LEAD-FREE ECOLOTROL® WALL HYDRANT	48		
FD2260 SHOWER STALL DRAIN	29	Z1320-CXL LEAD-FREE ECOLOTROL® WALL HYDRANT	48		
FD2270 SOLVENT WELD SHOWER STALL DRAIN	29	Z1320-CXL/Z1320-CXL-BFP/Z1321-CXL – REPAIR KIT	58		
FD2275 BRASS NO-CAULK SHOWER STALL DRAIN	30	Z1321-CXL LEAD-FREE ECOLOTROL® WALL HYDRANT	49		
		Z1330-C-BFP MODERATE CLIMATE ECOLOTROL WALL HYDRANT	50		
		Z1330-C MODERATE CLIMATE ECOLOTROL WALL HYDRANT	49		

NOTES

For terms and conditions, please visit zurn.ca/terms

Zurn is not responsible for typographical errors. The contents of this guide are subject to revision without notice.

© 2025 Zurn Water, LLC Items in this guide may be covered by U.S. and foreign Patents and Patents Pending. Registered Trademarks.

