

Trench Drain Systems

TD0425 Customer Guide – CANADA



ZURN.CA US 1.855.ONE.ZURN CANADA 1.877.892.5216



Effective April 15, 2025
Replaces All Previous Price Lists

TRENCH DRAIN SYSTEMS

PERMA-TRENCH®

| | |
|--|-----------|
| Z886 6" WIDE TRENCH DRAIN SYSTEM | 2 |
| Z882 12" WIDE TRENCH DRAIN SYSTEM | 4 |
| Z874-12 TRENCH DRAIN SYSTEM | 5 |
| Z874-18 TRENCH DRAIN SYSTEM | 6 |
| Z874-21 TRENCH DRAIN SYSTEM | 7 |
| Z874-U-XX-LDRA LIGHT-DUTY UTILITY TRENCH WITH ALUMINUM FRAME, CLAMP AND SOLID COVER | 8 |
| Z874-U-XX-LDRS LIGHT-DUTY UTILITY TRENCH WITH ALUMINUM FRAME AND CLAMP WITH SOLID STEEL COVER | 8 |
| Z874-U-XX-HD HEAVY-DUTY UTILITY TRENCH WITH STEEL FRAME AND DUCTILE IRON SOLID COVER | 8 |
| Z880 2-1/2" WIDE TRENCH DRAIN SYSTEM | 9 |
| Z884 4-3/4" WIDE SHALLOW DRAIN SYSTEM | 9 |
| Z883 6" WIDE SHALLOW TRENCH DRAIN SYSTEM | 10 |
| Z887 CATCH BASIN | 11 |

STAINLESS / SANI-FLO®

| | |
|---|-----------|
| ZS880 STAINLESS STEEL LINEAR SHOWER DRAIN | 12 |
| Z890 6" STAINLESS STEEL TRENCH DRAIN SYSTEM | 13 |
| Z895 12" STAINLESS STEEL TRENCH DRAIN SYSTEM | 14 |
| Z898 18" WIDE TRENCH DRAIN SYSTEM | 15 |
| Z894 24" WIDE TRENCH DRAIN SYSTEM | 16 |
| Z899-100 ELEVATOR TRENCH DRAIN SYSTEM | 17 |
| Z891 STAINLESS STEEL SLOTTED DRAINAGE SYSTEM | 17 |
| Z893 STAINLESS STEEL FLOOR RECEPTOR WITH BAR GRATE | 18 |
| Z897 STAINLESS STEEL CATCH BASIN | 19 |

SLOT DRAIN / HI-CAP

| | |
|--|-----------|
| Z888-4 SLOTTED DRAINAGE SYSTEM | 21 |
| Z888-6 SLOTTED DRAINAGE SYSTEM | 21 |
| Z888-8 SLOTTED DRAINAGE SYSTEM | 21 |
| Z888-12,-18 HIGH-CAPACITY TRENCH DRAIN SYSTEM SLOTTED DRAINAGE SYSTEM | 22 |
| Z889-12,-18 HIGH-CAPACITY CLEANOUT PORT | 22 |

ALUMINUM TRENCH

| | |
|---|-----------|
| ZA880-156 EXTRUDED ALUMINUM TRENCH DRAIN SYSTEM | 23 |
| ZA880-300A EXTRUDED ALUMINUM TRENCH DRAIN SYSTEM (PRICING WITHOUT GRATE) | 23 |
| ZA880-300B EXTRUDED ALUMINUM TRENCH DRAIN SYSTEM (PRICING WITHOUT GRATE) | 23 |
| ZA880-340 EXTRUDED ALUMINUM TRENCH DRAIN SYSTEM (PRICING WITHOUT GRATE) | 23 |

FIBERGLASS

| | |
|---|-----------|
| ZF806 6" WIDE TRENCH DRAIN SYSTEM | 24 |
| ZF812 12" WIDE TRENCH DRAIN SYSTEM | 26 |
| ZF817 CATCH BASIN | 27 |

FRAME AND GRATE SYSTEMS

| | |
|---|-----------|
| Z706 6" WIDE FRAME AND GRATE SYSTEM | 28 |
| Z712 12" WIDE FRAME AND GRATE SYSTEM | 28 |
| Z717 17" WIDE FRAME AND GRATE SYSTEM | 28 |
| Z723 23" WIDE FRAME AND GRATE SYSTEM | 29 |
| Z726 26" WIDE FRAME AND GRATE SYSTEM | 29 |

OIL SEPARATORS

| | |
|--|-----------|
| Z885 POLYETHYLENE OIL SEPARATOR | 30 |
|--|-----------|

TECHNICAL INFORMATION

| | |
|--------------------|-----------|
| ALPHANUMERIC INDEX | 31 |
|--------------------|-----------|



Denotes products made in the U.S.A.

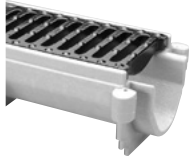
PLEASE NOTE

All products require a minimum of 4" new concrete encasement.

POA = Price On Availability

‡ Indicates grate will be shipped unpainted. For an additional charge, Zurn will paint the grates. Please contact your customer service representative for pricing.

Z886 6" WIDE TRENCH DRAIN SYSTEM



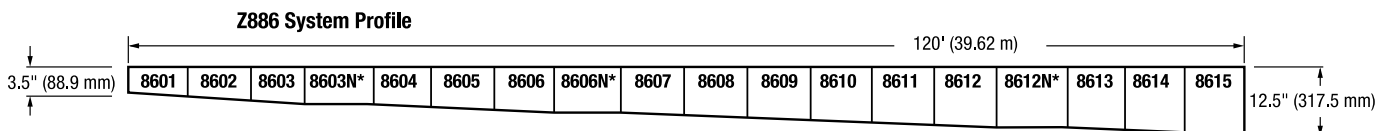
Standard Length: 80" (6.67')
Standard Grate Included: DGC

ENGINEERING SPECIFICATION

Channels shall be 80" long, 6" wide, and have a 4" wide throat. Modular channel sections shall be made of High Density Polyethylene (HDPE), have interlocking ends, and radiused bottom. Channel shall be provided either flat (neutral) or with a .75% built-in slope. Channels shall be available with inverts ranging from 3.5" to 12.50". Channels shall have clips molded into the sides of the channel to accommodate vertical rebar for positioning and anchoring purposes. Choices of class A thru F grates shall be available with H-20 and/or FAA load ratings and/or ADA compliance with mechanical lockdown devices. End caps and catch basins shall be available to complement the channels and grates. End outlets, bottom outlets, and side outlets shall be available in 2", 3", 4", and 6" diameters. Trench drain shall be Flo-Thru model Z886.

| Trench Number | Shallow Invert | | Deep Invert | | Flow Rate | | |
|---------------|----------------|-----|-------------|-----|-----------|-----|-----|
| | In. | mm | In. | mm | cfs | gpm | lps |
| 8601 | 3.50 | 89 | 4.10 | 104 | 0.207 | 93 | 6 |
| 8602 | 4.10 | 104 | 4.70 | 119 | 0.272 | 122 | 8 |
| 8603 | 4.70 | 119 | 5.30 | 135 | 0.339 | 152 | 10 |
| 8603N | 5.30 | 135 | 5.30 | 135 | - | - | - |
| 8604 | 5.30 | 135 | 5.90 | 150 | 0.408 | 183 | 12 |
| 8605 | 5.90 | 150 | 6.50 | 165 | 0.477 | 214 | 14 |
| 8606 | 6.50 | 165 | 7.10 | 180 | 0.546 | 245 | 16 |
| 8606N | 7.10 | 180 | 7.10 | 180 | - | - | - |
| 8607 | 7.10 | 180 | 7.70 | 196 | 0.615 | 276 | 17 |
| 8608 | 7.70 | 196 | 8.30 | 211 | 0.686 | 308 | 19 |
| 8609 | 8.30 | 211 | 8.90 | 226 | 0.755 | 339 | 21 |
| 8610 | 8.90 | 226 | 9.50 | 241 | 0.827 | 371 | 23 |
| 8611 | 9.50 | 241 | 10.1 | 257 | 0.898 | 403 | 26 |
| 8612 | 10.10 | 257 | 10.70 | 272 | 0.969 | 435 | 28 |
| 8612N | 10.70 | 272 | 10.70 | 272 | - | - | - |
| 8613 | 10.70 | 272 | 11.30 | 287 | 1.041 | 467 | 30 |
| 8614 | 11.30 | 287 | 11.90 | 302 | 1.11 | 498 | 32 |
| 8615 | 11.90 | 302 | 12.50 | 318 | 1.181 | 530 | 34 |

| SERVICE CHARGES | | | | ADD/ EACH |
|------------------|---|----------|----------|-----------|
| Fabrication | - 45°; 90°; Tee; Side Outlet Fabs | | | 454.00 |
| | - Cross Fabs | | | 901.00 |
| Cutting | Cutting for Each Cut Only | | | 164.00 |
| Radiused Channel | | | | POA |
| PART NO. | 80" (2032MM) SLOPED & NEUTRAL SECTIONS | EACH | PER FOOT | |
| P-886 | Channels Only | 660.00 | 99.00 | |
| PART NO. | CAST GRATES - 20" (508MM) | EACH | PER FOOT | |
| P6-BZ | Bronze Decorative Grate - Class A | 1,127.00 | 676.00 | |
| P6-DC | Ductile Iron Solid Cover - Class C | 145.00 | 87.00 | |
| P6-DC-G | Galvanized Ductile Solid Cover - Class C | 202.00 | 121.00 | |
| P6-DGC | Ductile Iron Slotted Grate - Class C | 144.00 | 86.00 | |
| P6-DGE | Ductile Iron Slotted - Class E | 179.00 | 107.00 | |
| P6-DBG | Ductile Iron Slotted Grate - Class C | 149.00 | 89.00 | |
| P6-GDC | Galvanized Ductile Grate - Class C | 179.00 | 107.00 | |
| P6-GDE | Galvanized Ductile Grate - Class E | 179.00 | 107.00 | |
| P6-BG | Galvanized Ductile Iron Cast Bar Grate - Class C | 197.00 | 118.00 | |
| P6-HPD | Heel Proof Longitudinal Ductile ADA Grate - Class B | 127.00 | 76.00 | |
| P6-LD | Longitudinal Ductile Grate - Class B | 169.00 | 101.00 | |
| P6-HPP | Heel-Proof Polyethylene ADA Grate - Class A (Light Duty) | 75.00 | 45.00 | |
| P6-GG | Fiberglass Grate - Class A | 604.00 | 362.00 | |
| P6-FGF | Ductile Iron Frame and Slotted Grate - Class F | 345.00 | 207.00 | |
| PART NO. | FABRICATED GRATES - 40" (1016MM) | EACH | PER FOOT | |
| P6-FG | Fabricated Galvanized Steel Slotted Grate - Class A | 194.00 | 58.00 | |
| P6-RFGC | Reinforced Galvanized Steel Slotted Grate - Class C | 420.00 | 126.00 | |
| P6-PG | Galvanized Perforated Steel ADA Grate - Class A | 174.00 | 52.00 | |
| P6-RPGC | Reinforced Galvanized Perforated Grate - Class C | 420.00 | 126.00 | |
| PART NO. | STAINLESS GRATES - 40" (1016MM) | EACH | PER FOOT | |
| P6-FS | Fabricated Stainless Steel Slotted Grate - Class A | 524.00 | 157.00 | |
| P6-RFSC | Reinforced Galvanized Stainless Steel Slotted Grate - Class C | 1,104.00 | 331.00 | |
| P6-PS | Stainless Steel Perforated Grate - Class A | 474.00 | 142.00 | |
| P6-RPSC | Reinforced Stainless Steel Perforated ADA Grate - Class C | 1,097.00 | 329.00 | |
| PART NO. | STAINLESS GRATES - 20" (508MM) | EACH | PER FOOT | |
| P6-SBG | Stainless Steel Bar Grate - Class E | 944.00 | 566.00 | |



Z886 6" WIDE TRENCH DRAIN SYSTEM

| PART NO. | | EACH |
|-------------|--|----------|
| P886-E1 | Closed End Cap | 40.00 |
| P886-E2 | 2" (50.8mm) No Hub End Outlet | 40.00 |
| P886-E3 | 3" (76.2mm) No Hub End Outlet | 40.00 |
| P886-E4 | 4" (101.6mm) No Hub End Outlet | 40.00 |
| P886-E6 | 6" (152.4mm) No Hub End Outlet | 40.00 |
| P886-U2 | 2" (50.8mm) No Hub Bottom Outlet | 40.00 |
| P886-U3 | 3" (76.2mm) No Hub Bottom Outlet | 40.00 |
| P886-U4 | 4" (101.6mm) No Hub Bottom Outlet | 40.00 |
| P886-U6 | 6" (152.4mm) No Hub Bottom Outlet | 40.00 |
| P6-DB | Dome Bottom Strainer | 106.00 |
| P886-JC | Joint Connector | 78.00 |
| P886-GL | Grate Lockdown (Bag of 4) | 37.00 |
| P886-SVF | Type 304 Stainless Steel Top Veneer Frame | 197.00 |
| PSS-886-FEC | Frame End Cap (Stainless) | 221.00 |
| P886-HDF | Heavy Duty Steel Frame Assembly with Anchor Studs and Grate Lockdown Hardware | 559.00 |
| P886-HDG | Galvanized Heavy Duty Steel Frame Assembly with Anchor Studs and Grate Lockdown Hardware | 708.00 |
| P886-ECVR | Heavy Duty Frame End Cover | 75.00 |
| P886-HDS | Stainless Steel Heavy Duty Frame Assembly with Studs and Grate Lockdown Hardware | 1,762.00 |
| P886-SW | 8.1" (205.74mm) High Sidewall Extension Adapter (Per Pair) | 1,416.00 |

PERMA-TRENCH®

STAINLESS / SANI-FLO®

SLOT DRAIN / HI-CAP

ALUMINUM TRENCH

FIBERGLASS

FRAME AND GRATE SYSTEMS

OIL SEPARATORS

*Regularly furnished unless otherwise specified.

†Indicates grate will be shipped unpainted. For an additional charge, Zurn will paint the grates.
Please contact your customer service representative for pricing.

For additional product information, please visit www.zurn.ca

Z882 12" WIDE TRENCH DRAIN SYSTEM



Standard Length: 8'
Standard Grate Included: DGC

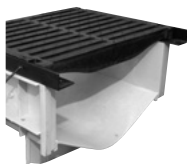
ENGINEERING SPECIFICATION

Channels shall be 8" long, 12" wide, and have a 9-1/4" wide throat. Modular channel sections shall be made of High Density Polyethylene (HDPE), have interlocking ends, and radiused bottom. Channel shall be provided with no slope (neutral) or with a 1.04% built-in slope. Channels shall be available with inverts ranging from 6.25" to 18.25". Channels shall have clips molded into the sides of the channel to accommodate vertical rebar for positioning and anchoring purposes. Choices of class A thru F grates shall be available with H-20 and/or FAA load ratings and/or ADA compliance with mechanical lockdown devices. A heavy-duty steel frame shall be provided to distribute weight between the grates and the HDPE channel. End caps and catch basins shall be available to complement the channels and grates. End outlets, bottom outlets, and side outlets shall be available in 4", 6", and 8" diameters. Trench drain shall be Flo-Thru model Z882.

| Trench Number | Shallow Invert | | Deep Invert | | Flow Rate | | |
|---------------|----------------|-----|-------------|-----|-----------|------|-----|
| | In. | mm | In. | mm | cfs | gpm | lps |
| 8201 | 6.25 | 159 | 7.25 | 184 | 1.241 | 557 | 35 |
| 8202 | 7.25 | 184 | 8.25 | 210 | 1.725 | 774 | 49 |
| 8203 | 8.25 | 210 | 9.25 | 235 | 2.226 | 999 | 63 |
| 8203N | 9.25 | 235 | 9.25 | 235 | - | - | - |
| 8204 | 9.25 | 235 | 10.25 | 260 | 2.745 | 1232 | 78 |
| 8205 | 10.25 | 260 | 11.25 | 286 | 3.271 | 1468 | 93 |
| 8206 | 11.25 | 286 | 12.25 | 311 | 3.808 | 1709 | 108 |
| 8206N | 12.25 | 311 | 12.25 | 311 | - | - | - |
| 8207 | 12.25 | 311 | 13.25 | 337 | 4.347 | 1951 | 123 |
| 8208 | 13.25 | 337 | 14.25 | 362 | 4.893 | 2196 | 139 |
| 8209 | 14.25 | 362 | 15.25 | 387 | 5.443 | 2443 | 155 |
| 8209N | 15.25 | 387 | 15.25 | 387 | - | - | - |
| 8210 | 15.25 | 387 | 16.25 | 413 | 5.996 | 2691 | 170 |
| 8211 | 16.25 | 413 | 17.25 | 438 | 6.551 | 2940 | 186 |
| 8212 | 17.25 | 438 | 18.25 | 464 | 7.106 | 3189 | 202 |

| SERVICE CHARGES | | | ADD/EACH |
|------------------|--|----------|----------|
| Fabrication | - 45°; 90°; Tee; Side Outlet Fabs | | 901.00 |
| | - Cross Fabs | | 1,791.00 |
| Cutting | Cutting for Each Cut Only | | 236.00 |
| Radiused Channel | | | POA |
| PART NO. | 8' (2434.4MM) CHANNELS - SLOPED & NEUTRAL SECTIONS | EACH | PER FOOT |
| P882 | P-882-1 through P-882-12 | 712.00 | 89.00 |
| PART NO. | 8' (2434.4MM) FRAMES | EACH | PER FOOT |
| P882-HDF | Heavy Duty Frame Assembly | 1,192.00 | 149.00 |
| P882-HDG | Galvanized Frame Assembly | 1,672.00 | 209.00 |
| P882-HDS | Stainless Steel Frame Assembly | 5,960.00 | 745.00 |
| PART NO. | CAST GRATES - 24" (609.6MM) | EACH | PER FOOT |
| P12-DC | Ductile Iron Solid Cover - Class C | 608.00 | 304.00 |
| P12-DGC | Ductile Iron Slotted Grate - Class C | 474.00 | 237.00 |
| P12-DGE | Ductile Iron Slotted - Class E | 490.00 | 245.00 |
| P12-DGF | Ductile Iron Slotted - Class F | 716.00 | 358.00 |
| P12-GDC | Galvanized Ductile Grate - Class C | 604.00 | 302.00 |
| P12-GDE | Galvanized Ductile Grate - Class E | 700.00 | 350.00 |
| P12-GDF | Galvanized Ductile Grate - Class F | 874.00 | 437.00 |
| P12-HPD | Heel Proof Longitudinal Ductile ADA Grate - Class B | 520.00 | 260.00 |
| P12-GHPD | Galvanized Heel Proof Longitudinal Ductile ADA Grate - Class B | 686.00 | 343.00 |
| PART NO. | FABRICATED GRATES - 24" (609.6MM) | EACH | PER FOOT |
| P12-BG | Galvanized Ductile Iron Bar Grate - Class D | 628.00 | 314.00 |
| P12-FG | Fabricated Galvanized Steel Slotted Grate - Class A | 464.00 | 232.00 |
| P12-RFG | Reinforced Galvanized Steel Lotted Grate - Class B | 1,202.00 | 601.00 |
| P12-PG | Galvanized Perforated Steel ADA Grate - Class A | 466.00 | 233.00 |
| P12-RPG | Reinforced Glvanized Perforated Grate - Class B | 1,156.00 | 578.00 |
| P12-GG | Fiberglass Grate - Class A | 726.00 | 363.00 |
| PART NO. | STAINLESS GRATES - 24" (609.6MM) | EACH | PER FOOT |
| P12-FS | Fabricated Stainless Steel Slotted Grate - Class A | 1,116.00 | 558.00 |
| P12-RFSC | Reinforced Galvanized Stainless Steel Slotted Grate - Class C | 2,064.00 | 1,032.00 |
| P12-PS | Stainless Steel Perforated Grate - Class A | 1,498.00 | 749.00 |
| P12-RPSC | Reinforced Stainless Steel Perforated ADA Grate - Class C | 2,214.00 | 1,107.00 |
| P12-SBG-L | Stainless Steel Bar Grate - Class C | 3,434.00 | 1,717.00 |
| PART NO. | EACH | | |
| P882-E1 | Closed End Cap | | 75.00 |
| P882-E4 | 4" (101.6mm) No Hub End Outlet | | 75.00 |
| P882-E6 | 6" (152.4mm) No Hub End Outlet | | 75.00 |
| P882-E8 | 8" (203.2mm) No Hub End Outlet | | 75.00 |
| P882-U4 | 4" (101.6mm) No Hub Bottom Outlet | | 82.00 |
| P882-U6 | 6" (152.4mm) No Hub Bottom Outlet | | 82.00 |
| P882-U8 | 8" (203.2mm) No Hub Bottom Outlet | | 82.00 |
| P882-SW | 11" (279.4mm) High Sidewall Extension Adapter (Per Pair) | | 1,131.00 |
| P12-ECVR | Frame End Cap (Black) (2 pcs.) | | 52.00 |
| P12-ECVR-G | Frame End Cap (Galvanized) (2 pcs.) | | 75.00 |
| P12-ECVR-SS | Frame End Cap (Stainless) (2 pcs.) | | 130.00 |
| P12-DB | Dome Bottom Strainer | | 221.00 |
| P882-JC | Joint Connector | | 109.00 |

Z874-12 TRENCH DRAIN SYSTEM



Standard Length: 80" (6.67')
Standard Grate Included: DGC

ENGINEERING SPECIFICATION

Channels shall be 80" long, 17" wide, and have a 12" wide throat. Modular channel sections shall be made of High Density Polyethylene (HDPE), have interlocking ends, and radiused bottom. Channel shall be provided with no slope (neutral) or with a 1.00% built-in slope. Channels shall be available with inverts ranging from 9.25" to 34.21". Channels shall have clips attached to the frame to accommodate vertical rebar for positioning and anchoring purposes. Choices of class A thru F grates shall be available with H-20 and/or FAA load ratings and/or ADA compliance with mechanical lockdown devices. A heavy-duty steel frame shall be provided to distribute weight between the grates and the HDPE channel. End caps and catch basins shall be available to complement the channels and grates. End outlets, bottom outlets, and side outlets shall be available in 4", 6", and 8" diameters. Trench drain shall be Flo-Thru model Z874-12.

| Trench Number | Shallow Invert | | Deep Invert | | Flow Rate | | |
|---------------|----------------|-----|-------------|-----|-----------|-------|-----|
| | In. | mm | In. | mm | cfs | gpm | lps |
| 1201P | 9.250 | 235 | 10.082 | 256 | 3.306 | 1475 | 93 |
| 1202P | 10.082 | 256 | 10.914 | 277 | 3.941 | 1758 | 111 |
| 1203P | 10.914 | 277 | 11.746 | 298 | 4.589 | 2048 | 129 |
| 1204P | 11.746 | 298 | 12.578 | 319 | 5.248 | 2341 | 148 |
| 1205P | 12.578 | 319 | 13.41 | 341 | 5.915 | 2639 | 166 |
| 1205NP | 13.410 | 341 | 13.410 | 341 | - | - | - |
| 1206P | 13.410 | 341 | 14.242 | 362 | 6.589 | 2939 | 185 |
| 1207P | 14.242 | 362 | 15.074 | 383 | 7.268 | 3243 | 205 |
| 1208P | 15.074 | 383 | 15.906 | 404 | 7.953 | 3548 | 224 |
| 1209P | 15.906 | 404 | 16.738 | 425 | 8.641 | 3855 | 243 |
| 1210P | 16.738 | 425 | 17.57 | 446 | 9.333 | 4164 | 263 |
| 1211P | 17.57 | 446 | 18.402 | 467 | 10.028 | 4474 | 282 |
| 1212P | 18.402 | 467 | 19.234 | 489 | 10.726 | 4785 | 302 |
| 1213P | 19.234 | 489 | 20.066 | 510 | 11.426 | 5098 | 322 |
| 1214P | 20.066 | 510 | 20.898 | 531 | 12.128 | 5411 | 341 |
| 1215P | 20.898 | 531 | 21.73 | 552 | 12.832 | 5725 | 361 |
| 1215NP | 21.73 | 552 | 21.73 | 552 | - | - | - |
| 1216P | 21.730 | 552 | 22.562 | 573 | 13.538 | 6040 | 381 |
| 1217P | 22.562 | 573 | 23.394 | 594 | 14.244 | 6355 | 401 |
| 1218P | 23.394 | 594 | 24.226 | 615 | 14.953 | 6671 | 421 |
| 1219P | 24.226 | 615 | 25.058 | 636 | 15.662 | 6988 | 441 |
| 1220P | 25.058 | 636 | 25.890 | 658 | 16.372 | 7304 | 461 |
| 1221P | 25.89 | 658 | 26.722 | 679 | 17.084 | 7622 | 481 |
| 1222P | 26.722 | 679 | 27.554 | 700 | 17.796 | 7940 | 501 |
| 1223P | 27.554 | 700 | 28.386 | 721 | 18.509 | 8258 | 521 |
| 1224P | 28.386 | 721 | 29.218 | 742 | 19.223 | 8576 | 541 |
| 1225P | 29.218 | 742 | 30.05 | 763 | 19.937 | 8895 | 561 |
| 1225NP | 30.05 | 763 | 30.05 | 763 | - | - | - |
| 1226P | 30.05 | 763 | 30.882 | 784 | 20.652 | 9214 | 581 |
| 1227P | 30.882 | 784 | 31.714 | 806 | 21.367 | 9533 | 601 |
| 1228P | 31.714 | 806 | 32.546 | 827 | 22.083 | 9852 | 622 |
| 1229P | 32.546 | 827 | 33.378 | 848 | 22.8 | 10172 | 642 |
| 1230P | 33.378 | 848 | 34.21 | 869 | 23.517 | 10492 | 662 |

| SERVICE CHARGES | | ADD/EACH | |
|-----------------|--|----------|----------|
| Fabrication | - 45°; 90°; Tee; Side Outlet Fabs | 1,376.00 | |
| | - Cross Fabs | 2,913.00 | |
| Cutting | Cutting for Each Cut Only | 465.00 | |
| PART NO. | 80" SLOPED & NEUTRAL SECTIONS | EACH | PER FOOT |
| 1201P-1230P | Channel | 1,560.00 | 234.00 |
| PART NO. | 80" FRAME OPTIONS | EACH | PER FOOT |
| -CBF | Black Acid Resistant Coated Frame | 2,294.00 | 344.00 |
| -HDF | Heavy Duty Dura Coated Steel Frame | 1,834.00 | 275.00 |
| -HDG | Galvanized Frame Assembly | 2,194.00 | 329.00 |
| -SF | Type 304 Stainless Steel Top Frame | 3,867.00 | 580.00 |
| PART NO. | GRATE OPTIONS 20" (508MM) | EACH | PER FOOT |
| -DCC | Ductile Iron Solid Cover - Class C | 617.00 | 370.00 |
| -DCF | Ductile Iron Solid Cover - Class F | 690.00 | 414.00 |
| -DGC | Ductile Iron Slotted Grate - Class C | 529.00 | 317.00 |
| -DGF | Ductile Iron Slotted Grate - Class F | 1,217.00 | 730.00 |
| -GDC | Galvanized Ductile Iron Grate - Class C | 950.00 | 570.00 |
| -GDF | Galvanized Ductile Iron Grate - Class F | 1,312.00 | 787.00 |
| -GG | Fiberglass Grate - Class A | 1,214.00 | 728.00 |
| -HPD | Heel-Proof Longitudinal Ductile Iron Grate - Class C | 402.00 | 241.00 |
| -SBG | Type 304 & 316 Stainless Steel Bar Grate - Class B | 4,120.00 | 2,472.00 |
| PART NO. | OUTLET ADAPTERS | EACH | |
| -E1 | Closed End Cap | 401.00 | |
| -E4 | 4" (101.6mm) No Hub End Outlet | 456.00 | |
| -E6 | 6" (152.4mm) No Hub End Outlet | 498.00 | |
| -E8 | 8" (203.2mm) No Hub End Outlet | 518.00 | |
| -E10 | 10" (254mm) No Hub End Outlet | 559.00 | |
| -U4 | 4" (101.6mm) No Hub Bottom Outlet | 1,044.00 | |
| -U6 | 6" (152.4mm) No Hub Bottom Outlet | 1,056.00 | |
| -U8 | 8" (203.2mm) No Hub Bottom Outlet | 1,202.00 | |
| -U12 | 12" (304.8mm) No Hub Bottom Outlet | 1,591.00 | |
| PART NO. | MISCELLANEOUS OPTIONS | EACH | |
| -DB4 | 4" (101.6mm) Dome Bottom Strainer | 562.00 | |
| -DB6 | 6" (152.4mm) Dome Bottom Strainer | 617.00 | |
| -DB8 | 8" (203.2mm) Dome Bottom Strainer | 690.00 | |
| -RC | Rebar Clips (Set of 2) | 23.00 | |

*Regularly furnished unless otherwise specified.

†Indicates grate will be shipped unpainted. For an additional charge, Zurn will paint the grates. Please contact your customer service representative for pricing.

For additional product information, please visit www.zurn.ca

PERMA-TRENCH®

STAINLESS / SAN-FLO®

SLOT DRAIN / HI-CAP

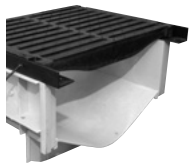
ALUMINUM TRENCH

FIBERGLASS

FRAME AND GRATE SYSTEMS

OIL SEPARATORS

Z874-18 TRENCH DRAIN SYSTEM



Standard Length: 80" (6.67')
Standard Grate Included: DGC

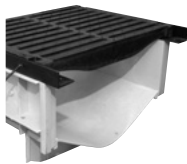
ENGINEERING SPECIFICATION

Channels shall be 80" long, 23" wide, and have an 18" wide throat. Modular channel sections shall be made of High Density Polyethylene (HDPE), have interlocking ends, and radiused bottom. Channel shall be provided with no slope (neutral) or with a 1.00% built-in slope. Channels shall be available with inverts ranging from 10.25" to 35.1". Channels shall have clips attached to the frame to accommodate vertical rebar for positioning and anchoring purposes. Choices of class A thru F grates shall be available with H-20 and/or FAA load ratings and/or ADA compliance with mechanical lockdown devices. A heavy-duty steel frame shall be available to complement the channels and grates. End outlets, bottom outlets, and side outlets shall be available in 4", 6", 8", and 12" diameters. Trench drain shall be Flo-Thru model Z874-18.

| Trench Number | Shallow Invert | | Deep Invert | | Flow Rate | | |
|---------------|----------------|-----|-------------|-----|-----------|------|-------|
| | In. | mm | In. | mm | cfs | gpm | lps |
| 1801P | 10.25 | 260 | 11.082 | 281 | 3058 | 193 | 6.85 |
| 1802P | 11.082 | 281 | 11.914 | 303 | 3589 | 226 | 8.04 |
| 1803P | 11.914 | 303 | 12.746 | 324 | 4132 | 261 | 9.26 |
| 1804P | 12.746 | 324 | 13.578 | 345 | 4685 | 296 | 10.5 |
| 1805P | 13.578 | 345 | 14.41 | 366 | 5247 | 331 | 11.76 |
| 1806P | 14.41 | 366 | 15.242 | 387 | 5816 | 367 | 13.04 |
| 1807P | 15.242 | 387 | 16.074 | 408 | 6392 | 403 | 14.33 |
| 1808P | 16.074 | 408 | 16.906 | 429 | 6973 | 440 | 15.63 |
| 1809P | 16.906 | 429 | 17.738 | 451 | 7559 | 477 | 16.94 |
| 1810P | 17.738 | 451 | 18.57 | 472 | 8149 | 514 | 18.27 |
| 1811P | 18.57 | 472 | 19.402 | 493 | 8743 | 552 | 19.6 |
| 1812P | 19.402 | 493 | 20.234 | 514 | 9340 | 589 | 20.93 |
| 1813P | 20.234 | 514 | 21.066 | 535 | 9940 | 627 | 22.28 |
| 1814P | 21.066 | 535 | 22.898 | 556 | 10542 | 665 | 23.63 |
| 1815P | 21.898 | 556 | 22.73 | 577 | 11147 | 703 | 24.98 |
| 1816P | 22.73 | 577 | 23.562 | 598 | 11753 | 741 | 26.34 |
| 1817P | 23.562 | 598 | 24.394 | 620 | 12362 | 780 | 27.71 |
| 1818P | 24.394 | 620 | 25.226 | 641 | 12972 | 818 | 29.08 |
| 1819P | 25.226 | 641 | 26.058 | 662 | 13584 | 857 | 30.45 |
| 1820P | 26.058 | 662 | 26.89 | 683 | 14198 | 896 | 31.82 |
| 1821P | 26.89 | 683 | 27.722 | 704 | 14812 | 934 | 33.2 |
| 1822P | 27.722 | 704 | 28.554 | 725 | 15428 | 973 | 34.58 |
| 1823P | 28.554 | 725 | 29.386 | 746 | 16045 | 1012 | 35.96 |
| 1824P | 29.386 | 746 | 30.218 | 768 | 16663 | 1051 | 37.35 |
| 1825P | 30.218 | 768 | 31.05 | 789 | 17282 | 1090 | 38.74 |
| 1826P | 31.05 | 789 | 31.882 | 810 | 17901 | 1129 | 40.12 |
| 1827P | 31.882 | 810 | 32.714 | 831 | 18522 | 1168 | 41.52 |
| 1828P | 32.714 | 831 | 33.546 | 852 | 19143 | 1208 | 42.91 |
| 1829P | 33.546 | 852 | 34.378 | 873 | 19765 | 1247 | 44.3 |
| 1830P | 34.378 | 873 | 35.21 | 894 | 20388 | 1286 | 45.7 |

| SERVICE CHARGES | | ADD/EACH | |
|-----------------|--|----------|----------|
| Fabrication | - 45°; 90°; Tee; Side Outlet Fabs | 1,376.00 | |
| | - Cross Fabs | 2,913.00 | |
| Cutting | Cutting for Each Cut Only | 465.00 | |
| PART NO. | 80" (2032MM) SLOPED & NEUTRAL SECTIONS | EACH | PER FOOT |
| 1801P-1830P | Channel | 1,760.00 | 264.00 |
| PART NO. | 80" (2032MM) FRAME OPTIONS | EACH | PER FOOT |
| -CBF | Black Acid Resistant Coated Frame | 3,434.00 | 515.00 |
| -HDF | Heavy Duty Dura Coated Steel Frame | 1,834.00 | 275.00 |
| -HDG | Galvanized Frame Assembly | 2,207.00 | 331.00 |
| -SF | Type 304 Stainless Steel Top Frame | 6,480.00 | 972.00 |
| PART NO. | GRATE OPTIONS 20" (508MM) | EACH | PER FOOT |
| -DCC | Ductile Iron Solid Cover - Class C | 799.00 | 479.00 |
| -DCF | Ductile Iron Solid Cover - Class F | 1,155.00 | 693.00 |
| -DGC | Ductile Iron Slotted Grate - Class C | 974.00 | 584.00 |
| -DGF | Ductile Iron Slotted Grate - Class F | 1,067.00 | 640.00 |
| -GDC | Galvanized Ductile Iron Grate - Class C | 944.00 | 566.00 |
| -GDF | Galvanized Ductile Iron Grate - Class F | 1,349.00 | 809.00 |
| -GG | Fiberglass Grate - Class A | 854.00 | 512.00 |
| -HPD | Heel-Proof Longitudinal Ductile Iron Grate - Class C | 997.00 | 598.00 |
| -SBG | Stainless Steel Bar Grate - Class C | 4,387.00 | 2,632.00 |
| PART NO. | OUTLET ADAPTERS | EACH | |
| -E1 | Closed End Cap | 462.00 | |
| -E4 | 4" (101.6mm) No Hub End Outlet | 515.00 | |
| -E6 | 6" (152.4mm) No Hub End Outlet | 558.00 | |
| -E8 | 8" (203.2mm) No Hub End Outlet | 577.00 | |
| -E12 | 12" (304.8mm) No Hub End Outlet | 643.00 | |
| -E18 | 18" (457.2mm) No Hub End Outlet | POA | |
| -U4 | 4" (101.6mm) No Hub Bottom Outlet | 1,119.00 | |
| -U6 | 6" (152.4mm) No Hub Bottom Outlet | 1,125.00 | |
| -U8 | 8" (203.2mm) No Hub Bottom Outlet | 1,180.00 | |
| -U12 | 12" (304.8mm) No Hub Bottom Outlet | 1,277.00 | |
| -U18 | 18" (457.2mm) No Hub Bottom Outlet | 1,556.00 | |
| PART NO. | MISCELLANEOUS OPTIONS | EACH | |
| -DB4 | 4" (101.6mm) Dome Bottom Strainer | 600.00 | |
| -DB6 | 6" (152.4mm) Dome Bottom Strainer | 562.00 | |
| -DB8 | 8" (203.2mm) Dome Bottom Strainer | 617.00 | |
| -DB12 | 12" (304.8mm) Dome Bottom Strainer | 673.00 | |
| -RC | Rebar Clips (Set of 2) | 23.00 | |

Z874-21 TRENCH DRAIN SYSTEM



Standard Length: 80" (6.67')
Standard Grate Included: DGC

ENGINEERING SPECIFICATION

Channels shall be 80" long, 26-1/4" wide, and have a 21-1/4" wide throat. Modular channel sections shall be made of High Density Polyethylene (HDPE), have interlocking ends, and radiused bottom. Channel shall be provided with no slope (neutral) or with a 1.00% built-in slope. Channels shall be available with inverts ranging from 11.25" to 36.21". Channels shall have clips attached to the frame to accommodate vertical rebar for positioning and anchoring purposes. Choices of class A thru F grates shall be available with H-20 and/or FAA load ratings and/or ADA compliance with mechanical lockdown devices. A heavy-duty steel frame shall be provided to distribute weight between the grates and the HDPE channel. End caps and catch basins shall be available to complement the channels and grates. End outlets, bottom outlets, and side outlets shall be available in 4", 6", 8", 12", and 18" diameters. Trench drain shall be Flo-Thru model Z874-21.

| Trench Number | Shallow Invert | | Deep Invert | | Flow Rate | | |
|---------------|----------------|-----|-------------|-----|-----------|-------|------|
| | In. | mm | In. | mm | cfs | gpm | lps |
| 2101P | 11.25 | 286 | 12.082 | 307 | 8.369 | 3734 | 236 |
| 2102P | 12.082 | 305 | 12.914 | 328 | 9.857 | 4398 | 277 |
| 2103P | 12.914 | 328 | 13.746 | 349 | 11.388 | 5081 | 320 |
| 2104P | 13.746 | 349 | 14.578 | 370 | 12.953 | 5779 | 365 |
| 2105P | 14.578 | 370 | 15.41 | 391 | 14.549 | 6491 | 409 |
| 2105NP | 15.41 | 391 | 15.41 | 391 | - | - | - |
| 2106P | 15.41 | 391 | 16.424 | 417 | 16.17 | 7214 | 455 |
| 2107P | 16.424 | 417 | 17.074 | 434 | 17.814 | 7948 | 501 |
| 2108P | 17.074 | 434 | 17.906 | 455 | 19.478 | 8690 | 548 |
| 2109P | 17.906 | 455 | 18.738 | 476 | 21.159 | 9440 | 596 |
| 2110P | 18.738 | 476 | 19.57 | 497 | 22.855 | 10197 | 643 |
| 2111P | 19.57 | 497 | 20.402 | 518 | 24.565 | 10960 | 691 |
| 2112P | 20.402 | 518 | 21.234 | 539 | 26.287 | 11728 | 740 |
| 2113P | 21.234 | 539 | 22.066 | 560 | 28.02 | 12501 | 789 |
| 2114P | 22.066 | 560 | 22.898 | 582 | 29.763 | 13279 | 838 |
| 2115P | 22.898 | 582 | 23.73 | 603 | 31.514 | 14060 | 887 |
| 2115NP | 23.73 | 603 | 23.73 | 603 | - | - | - |
| 2116P | 23.73 | 603 | 24.562 | 624 | 33.274 | 14845 | 936 |
| 2117P | 24.562 | 624 | 25.394 | 645 | 35.041 | 15633 | 986 |
| 2118P | 25.394 | 645 | 26.226 | 666 | 36.814 | 16424 | 1036 |
| 2119P | 26.226 | 666 | 27.058 | 687 | 38.594 | 17218 | 1086 |
| 2120P | 27.058 | 687 | 27.89 | 701 | 40.379 | 18015 | 1136 |
| 2121P | 27.89 | 701 | 28.722 | 729 | 42.169 | 18814 | 1187 |
| 2122P | 28.722 | 729 | 29.554 | 751 | 43.964 | 19614 | 1237 |
| 2123P | 29.554 | 751 | 30.386 | 772 | 45.763 | 20417 | 1288 |
| 2124P | 30.386 | 772 | 31.218 | 793 | 47.567 | 21222 | 1339 |
| 2125P | 31.218 | 793 | 32.05 | 814 | 49.374 | 22028 | 1390 |
| 2125NP | 32.05 | 814 | 32.05 | 814 | - | - | - |
| 2126P | 32.05 | 814 | 32.882 | 835 | 51.184 | 22836 | 1441 |
| 2127P | 32.882 | 835 | 33.714 | 856 | 52.998 | 23645 | 1492 |
| 2128P | 33.714 | 856 | 34.546 | 878 | 54.815 | 24455 | 1543 |
| 2129P | 34.546 | 878 | 35.378 | 899 | 56.634 | 25267 | 1594 |
| 2130P | 35.378 | 899 | 36.21 | 920 | 58.457 | 26080 | 1645 |

| SERVICE CHARGES | | ADD/EACH | |
|-----------------|--|----------|----------|
| Fabrication | - 45°; 90°; Tee; Side Outlet Fabs | 1,338.00 | |
| | - Cross Fabs | 2,832.00 | |
| Cutting | Cutting for Each Cut Only | 451.00 | |
| PART NO. | 80" (2032MM) SLOPED & NEUTRAL SECTIONS | EACH | PER FOOT |
| 210P - 2130P | Channel | 1,987.00 | 298.00 |
| PART NO. | 80" (2032MM) FRAME OPTIONS | EACH | PER FOOT |
| -CBF | Black Acid Resistant Coated Frame | 3,854.00 | 578.00 |
| -HDF | Heavy Duty Dura Coated Steel Frame | 1,900.00 | 285.00 |
| -GFA | Galvanized Frame Assembly | 2,280.00 | 342.00 |
| -SF | Type 304 Stainless Steel Top Frame | 4,527.00 | 679.00 |
| PART NO. | GRATE OPTIONS 20" (508MM) | EACH | PER FOOT |
| -DCC | Ductile Iron Solid Cover - Class C | 1,195.00 | 717.00 |
| -DCF | Ductile Iron Solid Cover - Class F | 1,329.00 | 797.00 |
| -DGC | Ductile Iron Slotted Grate - Class C | 995.00 | 597.00 |
| -DGF | Ductile Iron Slotted Grate - Class F | 1,379.00 | 827.00 |
| -GDC | Galvanized Ductile Iron Grate - Class C | 995.00 | 597.00 |
| -GDF | Galvanized Ductile Iron Grate - Class F | 1,255.00 | 753.00 |
| -GG | Fiberglass Grate - Class A | 2,040.00 | 1,224.00 |
| -HPD | Heel-Proof Longitudinal Ductile Iron Grate - Class C | 782.00 | 469.00 |
| -SBG | Stainless Steel Bar Grate - Class C | 7,894.00 | 4,736.00 |
| PART NO. | OUTLET ADAPTERS | EACH | |
| -E1 | Closed End Cap | 551.00 | |
| -E4 | 4" (101.6mm) No Hub End Outlet | 607.00 | |
| -E6 | 6" (152.4mm) No Hub End Outlet | 649.00 | |
| -E8 | 8" (203.2mm) No Hub End Outlet | 670.00 | |
| -E12 | 12" (304.8mm) No Hub End Outlet | 736.00 | |
| -E18 | 18" (457.2mm) No Hub End Outlet | POA | |
| -U4 | 4" (101.6mm) No Hub Bottom Outlet | 1,085.00 | |
| -U6 | 6" (152.4mm) No Hub Bottom Outlet | 787.00 | |
| -U8 | 8" (203.2mm) No Hub Bottom Outlet | 835.00 | |
| -U12 | 12" (304.8mm) No Hub Bottom Outlet | 1,239.00 | |
| -U18 | 18" (457.2mm) No Hub Bottom Outlet | 1,090.00 | |
| PART NO. | MISCELLANEOUS OPTIONS | EACH | |
| -DB4 | 4" (101.6mm) Dome Bottom Strainer | 562.00 | |
| -DB6 | 6" (152.4mm) Dome Bottom Strainer | 506.00 | |
| -DB8 | 8" (203.2mm) Dome Bottom Strainer | 544.00 | |
| -DB12 | 12" (304.8mm) Dome Bottom Strainer | 656.00 | |
| -RC | Rebar Clips (Set of 2) | 23.00 | |

*Regularly furnished unless otherwise specified.

†Indicates grate will be shipped unpainted. For an additional charge, Zurn will paint the grates. Please contact your customer service representative for pricing.

For additional product information, please visit www.zurn.ca

PERMA-TRENCH®

STAINLESS / SANI-FLO®

SLOT DRAIN / HI-CAP

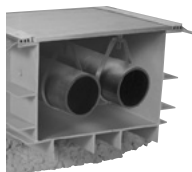
ALUMINUM TRENCH

FIBERGLASS

FRAME AND GRATE SYSTEMS

OIL SEPARATORS

Z874-U-XX-LDRA LIGHT-DUTY UTILITY TRENCH WITH ALUMINUM FRAME, CLAMP AND SOLID COVER



The Z874-U is a neutral, non-sloped utility drain system. Depths of this system may range from 4" to 30".

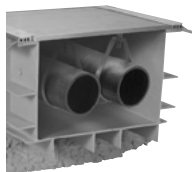
ENGINEERING SPECIFICATION

Z874-U-XX-LDRA Utility Trench Drainage System. High Density Polyethylene (HDPE) drain channel. All sections modular 40" lengths with interlocking ends. Complete with aluminum frame assembly at surface and light-duty aluminum (LDRA) solid cover. Recessed 1/8" for linoleum application.

| PREFIX | DESCRIPTION | NO. OF GRATES PER CHANNEL |
|--------|--|---------------------------|
| Z* | 40" High Density Polyethylene (HDPE) Channel with Aluminum Frame, Clamp, and Solid Cover | 2 |

| END CAPS | | PER FOOT |
|-----------------|------------------------------|----------|
| 874-U-12-LDRA | 12" Throat Opening - Class A | 937.00 |
| 874-U-14-LDRA | 14" Throat Opening - Class A | 1,001.00 |
| 874-U-16-LDRA | 16" Throat Opening - Class A | 1,062.00 |
| 875-U-18-LDRA | 18" Throat Opening - Class A | 1,131.00 |
| 875-U-20-LDRA | 20" Throat Opening - Class A | 1,196.00 |
| 875-U-22-LDRA | 22" Throat Opening - Class A | 1,261.00 |
| 875-U-24-LDRA | 24" Throat Opening - Class A | 1,323.00 |
| 875-U-26-LDRA | 26" Throat Opening - Class A | 1,423.00 |
| 875-U-28-LDRA | 28" Throat Opening - Class A | - |
| SERVICE CHARGES | | ADD/EACH |
| Fabrication | - 45°; 90°; Tee Fabs | 860.00 |
| | - Cross Fabs | 1,711.00 |
| Cutting | | 443.00 |

Z874-U-XX-LDRS LIGHT-DUTY UTILITY TRENCH WITH ALUMINUM FRAME AND CLAMP WITH SOLID STEEL COVER



The Z874-U is a neutral, non-sloped utility drain system. Depths of this system may range from 4" to 30".

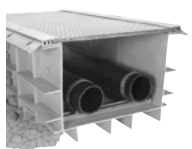
ENGINEERING SPECIFICATION

Z874-U-XX-LDRS Utility Trench Drainage System. High Density Polyethylene (HDPE) drain channel. All sections modular 40" lengths with interlocking ends. Complete with aluminum frame assembly at surface and light-duty solid steel (LDRS) cover. Recessed 1/8" for linoleum application.

| PREFIX | DESCRIPTION | NO. OF GRATES PER CHANNEL |
|--------|---|---------------------------|
| Z* | 40" High Density Polyethylene (HDPE) Channel with Aluminum Frame and Clamp with Solid Steel Cover | 2 |

| END CAPS | | PER FOOT |
|-----------------|------------------------------|----------|
| 874-U-12-LDRS | 12" Throat Opening - Class A | 319.00 |
| 874-U-14-LDRS | 14" Throat Opening - Class A | 937.00 |
| 874-U-16-LDRS | 16" Throat Opening - Class A | 1,001.00 |
| 875-U-18-LDRS | 18" Throat Opening - Class A | 1,062.00 |
| 875-U-20-LDRS | 20" Throat Opening - Class A | 1,131.00 |
| 875-U-22-LDRS | 22" Throat Opening - Class A | 1,196.00 |
| 875-U-24-LDRS | 24" Throat Opening - Class A | 1,261.00 |
| 875-U-26-LDRS | 26" Throat Opening - Class A | 1,323.00 |
| 875-U-28-LDRS | 28" Throat Opening - Class A | 1,423.00 |
| SERVICE CHARGES | | ADD/EACH |
| Fabrication | - 45°; 90°; Tee Fabs | 860.00 |
| | - Cross Fabs | 1,711.00 |
| Cutting | | 443.00 |

Z874-U-XX-HD HEAVY-DUTY UTILITY TRENCH WITH STEEL FRAME AND DUCTILE IRON SOLID COVER



The Z874-U is a neutral, non-sloped utility drain system. Depths of this system may range from 4" to 30".

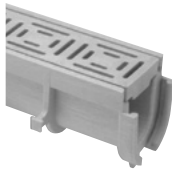
ENGINEERING SPECIFICATION

Z874-U-XX-HD Heavy-Duty Utility Trench Drainage System with Ductile Solid Cover. High Density Polyethylene (HDPE) drain channel. All sections modular 80" or 8' lengths with interlocking ends. Complete with Dura-Coated steel frame system and ductile iron solid cover.

| PREFIX | DESCRIPTION | NO. OF GRATES PER CHANNEL |
|--------|--|---------------------------|
| Z* | High Density Polyethylene (HDPE) Channel with Dura-Coated Steel Frame and Ductile Iron Solid Cover | 4 |

| END CAPS | | PER FOOT |
|-----------------|------------------------------|----------|
| 874-U-9-HD | 9" Throat Opening - Class E | 319.00 |
| 874-U-12-HD | 12" Throat Opening - Class C | 462.00 |
| 874-U-18-HD | 18" Throat Opening - Class C | 546.00 |
| 874-U-21-HD | 21" Throat Opening - Class C | 733.00 |
| SERVICE CHARGES | | ADD/EACH |
| Fabrication | - 45°; 90°; Tee Fabs | 860.00 |
| | - Cross Fabs | 1,711.00 |
| Cutting | | 443.00 |

Z880 2-1/2" WIDE TRENCH DRAIN SYSTEM



Standard Length: 48" (4')
Standard Grate Included: POG
Colors Available: Gray (Standard), Sand, White, Brick Red, Blue

ENGINEERING SPECIFICATION

2-1/2" Wide Trench Drain System shall be 48" long and 2-1/2" wide. Drain shall be 3" deep. Drain shall be made of High Density Polyethylene (HDPE) and be UV-10 stabilized. Drain shall have bedding feet and/or bedding feet shall be used for positioning and anchoring purposes. Drain shall have tongue and groove snap fit connection. End outlets and bottom outlets shall be available in 1-1/2" diameter. Drain shall be Flo-Thru Z880. 24" long high-density polyethylene decorative grate (-POG) provided as standard.

NOTES

Additional custom colors for channels and gratings are available upon request. Please call your customer service representative for lead time and minimum runs.

| SERVICE CHARGES | | ADD/EACH | |
|-----------------|--|----------|----------|
| Cutting | Cutting for Each Cut Only | 64.00 | |
| PART NO. | 48" (1219.2MM) NEUTRAL SECTIONS | EACH | PER FOOT |
| P-880-POG | Channel with Heel-Proof Polyethylene Grate - Type A | 92.00 | 23.00 |
| PART NO. | GRATES - 24" (609.6MM) | EACH | PER FOOT |
| -BZ | Bronze Decorative Grate - Class A | 1,062.00 | 531.00 |
| -SOG | Stainless Steel Decorative Grate - Class A | 436.00 | 218.00 |
| PART NO. | | EACH | |
| -E1 | Closed End Cap | 21.00 | |
| -E1.5 | 1-1/2" No-Hub End Outlet | 21.00 | |
| -U1.5 | 1-1/2" No-Hub Bottom Outlet | 22.00 | |
| -C45 | 45-Degree Channel | 32.00 | |
| -C90 | 90-Degree Channel | 32.00 | |
| -G45 | 45-Degree Plastic Grate - Class A | 22.00 | |
| -G90 | 90-Degree Plastic Grate - Class A | 22.00 | |
| -S45 | 45-Degree Channel and Grate - Class A | 164.00 | |
| -S90 | 90-Degree Channel and Grate - Class A | 164.00 | |
| -VP | Vandal-Resistant Grate Lockdown Assembly Bag (1 Per Channel) | 20.00 | |

Z884 4-3/4" WIDE SHALLOW DRAIN SYSTEM



Standard Length: 40" (3.33')
Standard Grate Included: HPP

ENGINEERING SPECIFICATION

Channels shall be 40" long, 4-3/4" wide, and have a 3-1/4" wide throat. Modular channel sections shall be made of polypropylene, have interlocking ends, and radiused bottom. Channel shall be provided flat (neutral) with a 2.875" invert. Channels shall have clips molded into the sides of the channel to accommodate vertical rebar for positioning and anchoring purposes. Choices of class A and B grates shall be available with ADA compliance with mechanical lockdown devices. End caps and catch basins shall be available to complement the channels and grates. End outlets in 2" diameter and bottom outlets in 3" diameter shall be available. Trench drain shall be Flo-Thru model Z884.

| SERVICE CHARGES | | ADD/EACH | |
|-----------------|--|----------|----------|
| Fabrication | - 45°; 90°; Tee; Side Outlet Fabs | 454.00 | |
| | - Cross Fabs | 901.00 | |
| Cutting | Cutting for Each Cut Only | 164.00 | |
| PART NO. | 40" (1016MM) NEUTRAL SECTIONS | EACH | PER FOOT |
| P884 | Channels Only | 184.00 | 46.00 |
| PART NO. | GRATES - 20" (508MM) & 40" (1016MM) | EACH | PER FOOT |
| P884-BZ | Bronze Decorative Grate - Class C - 20" (508mm) | 639.00 | 383.00 |
| P884-CG | Cast Iron Slotted Grate - Class B - 20" (508mm) | 137.00 | 82.00 |
| P884-HPP | Heel-Proof Polyethylene Grate - Class A - 20" (508mm) | 87.00 | 52.00 |
| P884-FG | Fabricated Galvanized Steel Slotted Grate - Class A - 40" (1016mm) | 194.00 | 58.00 |
| P884-FS | Fabricated Stainless Steel Slotted Grate - Class A - 40" (1016mm) | 520.00 | 156.00 |
| P884-PG | Perforated Galvanized Steel ADA Grate - Class A - 40" (1016mm) | 194.00 | 58.00 |
| P884-PS | Perforated Stainless Steel ADA Grate - Class A - 40" (1016mm) | 497.00 | 149.00 |
| PART NO. | | EACH | |
| P884-E1 | Closed End Cap | 44.00 | |
| P884-E2 | 2" (50.8mm) No Hub End Outlet | 44.00 | |
| P884-U3 | 3" (76.2mm) No Hub Bottom Outlet | 44.00 | |

*Regularly furnished unless otherwise specified.

†Indicates grate will be shipped unpainted. For an additional charge, Zurn will paint the grates. Please contact your customer service representative for pricing.

For additional product information, please visit www.zurn.ca

Z883 6" WIDE SHALLOW TRENCH DRAIN SYSTEM



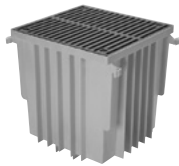
Standard Length: 40" (3.33')
Standard Grate Included: DGC

ENGINEERING SPECIFICATION

Channels shall be 40" long, 6" wide, and have a 4" wide throat. Modular channel sections shall be made of polypropylene, have interlocking ends, and radiused bottom. Channel shall be provided flat (neutral) with a 3-1/2" invert. Channels shall have clips molded into the sides of the channel to accommodate vertical rebar for positioning and anchoring purposes. Choices of class A, B, and C grates shall be available with H-20 and/or ADA compliance with mechanical lockdown devices. End caps and catch basins shall be available to complement the channels and grates. End outlets in 2" diameter and bottom outlets in 2", 3", and 4" diameters shall be available. Trench drain shall be Flo-Thru model Z883.

| SERVICE CHARGES | | | ADD/EACH |
|--|-------------------------------------|--------|----------|
| Fabrication | - 45°; 90°; Tee; Side Outlet Fabs | | 454.00 |
| | - Cross Fabs | | 901.00 |
| Cutting | Cutting for Each Cut Only | | 164.00 |
| PART NO. | 40" (1016MM) NEUTRAL SECTIONS | EACH | PER FOOT |
| P883 | Channels Only | 140.00 | 42.00 |
| PART NO. | GRATES - 20" (508MM) & 40" (1016MM) | | |
| NOTE - (1) These channels will accept all P-6 (886) grates | | | |
| PART NO. | EACH | | |
| P883-E1 | Closed End Cap | | 35.00 |
| P883-E2 | 2" (50.8mm) No Hub End Outlet | | 35.00 |
| P883-U2 | 2" (50.8mm) No Hub Bottom Outlet | | 37.00 |
| P883-U3 | 3" (76.2mm) No Hub Bottom Outlet | | 37.00 |
| P883-U4 | 4" (101.6mm) No Hub Bottom Outlet | | 37.00 |

Z887 CATCH BASIN



Standard Grate Included: DGC

ENGINEERING SPECIFICATION

Catch Basins shall be 6" wide x 20" long x 20" deep, 12" wide x 24" long x 24" deep, or 24" wide x 24" long x 24" deep and shall be made of High Density Polyethylene (HDPE). Choices of class A thru F grates shall be available with H-20, FAA, and/or ADA compliance. Outlets in 2", 3", 4", 6", and 8" diameters shall be available. Catch Basin shall be Flo-Thru model Z887.

| PART NO. | Z887 BASIN ONLY | EACH |
|---|--|----------|
| P887-6x20 | Basin Only | 448.00 |
| P887-12x24 | Basin Only | 525.00 |
| P887-24x24 | Basin Only | 700.00 |
| PART NO. | BLACK DUCTILE FRAMES | EACH |
| -HD-6x20 | Extra Heavy Duty Frame Assembly with Anchor Studs | 411.00 |
| -HD-12x24 | Extra Heavy Duty Frame Assembly with Anchor Studs | 500.00 |
| -HD-24x24 | Extra Heavy Duty Frame Assembly with Anchor Studs | 666.00 |
| PART NO. | BLACK DUCTILE FRAMES | EACH |
| -GFA-6x20 | Galvanized Extra Heavy Duty Frame Assembly with Anchor Studs | 600.00 |
| -GFA-12x24 | Galvanized Extra Heavy Duty Frame Assembly with Anchor Studs | 600.00 |
| -GFA-24x24 | Galvanized Extra Heavy Duty Frame Assembly with Anchor Studs | 1,301.00 |
| PART NO. | EACH | |
| -SF-6x20 | Type 304 Stainless Steel Top Frame | 848.00 |
| -SF-12x24 | Type 304 Stainless Steel Top Frame | 3,839.00 |
| -SF-24x24 | Type 304 Stainless Steel Top Frame | 4,939.00 |
| TO ADD GRATES TO OBTAIN A TOTAL BASIN PRICE | | |
| 1 | 6" (152.4mm) x 20" (508mm) system list price, add the list price for (1) of the corresponding 806 grates to the basin price. | |
| 2 | 12" (304.8mm) x 24" (609.6mm) system list price, add the list price for (1) of the corresponding 812 grate to the basin price. | |
| 3 | 24" (609.6mm) x 24" (609.6mm) add (1) of the following 24" (609.6mm) x 24" (609.6mm) grates | |
| PART NO. | GRATES 24" (609.6MM) X 24" (609.6MM) | EACH |
| -BG | Galvanized Ductile Iron Bar Grate - Class C | 1,292.00 |
| -DC | Ductile Iron Solid Cover - Class C | 6,886.00 |
| -DGC | Ductile Iron Slotted Grate - Class C | 1,184.00 |
| -DGF | Ductile Iron Slotted Grate - Class F | 1,545.00 |
| -FG | Galvanized Steel Slotted Grate - Class A | 3,761.00 |
| -FS | Fabricated Stainless Steel Slotted Grate - Class A | 3,649.00 |
| -GDF | Galvanized Ductile Grate - Class F | 1,976.00 |
| -GG | Fiberglass Grate - Class A | 1,409.00 |
| -SBG | Stainless Steel Bar Grate - Class E | 5,085.00 |
| PART NO. | EACH | |
| -E3/U3 | 3" (76.2mm) End/Bottom Outlet | 40.00 |
| -E4/U4 | 4" (101.6mm) End/Bottom Outlet | 40.00 |
| -E6/U6 | 6" (152.4mm) End/Bottom Outlet | 64.00 |
| -E8/U8 | 8" (203.2mm) End/Bottom Outlet | 82.00 |
| -IA6 | 6" (152.4mm) Inlet Adapter | 78.00 |
| -IA12 | 12" (304.8mm) Inlet Adapter | 120.00 |
| -EXT | 12" (304.8mm) Stackable Body Extension - For 24" (609.6mm) Only | 710.00 |
| -Y6 | 6" (152.4mm) Sediment Bucket | 396.00 |
| -Y12 | 12" (304.8mm) Sediment Bucket | 562.00 |
| -Y24 | 24" (609.6mm) Sediment Bucket | 682.00 |
| -YS6 | 6" (152.4mm) Stainless Steel Sediment Bucket | 682.00 |
| -YS12 | 12" (304.8mm) Stainless Steel Sediment Bucket | 840.00 |
| -YS24 | 24" (609.6mm) Stainless Steel Sediment Bucket | 1,769.00 |

*Regularly furnished unless otherwise specified.

†Indicates grate will be shipped unpainted. For an additional charge, Zurn will paint the grates. Please contact your customer service representative for pricing.

For additional product information, please visit www.zurn.ca

PERMA-TRENCH®

STAINLESS / SANI-FLO®

SLOT DRAIN / HI-CAP

ALUMINUM TRENCH

FIBERGLASS

FRAME AND GRATE SYSTEMS

OIL SEPARATORS

ZS880 STAINLESS STEEL LINEAR SHOWER DRAIN

Standard Grate: -LS (Linear Slotted)

ENGINEERING SPECIFICATION

ZS880 All Type 304 (CF8) Fabricated Stainless Steel Linear Shower Drain. Complete with vertically adjustable anchoring support legs, anti-ponding V-shaped channel with 2" No-Hub outlet, adjustable secured leveling frame with integral tiling edge, and secured, light-duty, slotted heel-proof grate

NOTES

**ZR Includes cost add for grate finish.



-LS



-BW



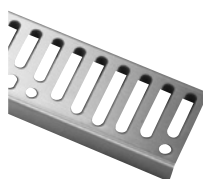
-DB



-SG



-TG (Tile By Others)



-WG

| | | | | GRATE OPEN AREA SQ. IN. | |
|--------------------------|-----------------------------------|------------------------|--------------------|----------------------------------|---------------------|
| PREFIX | DESCRIPTION | PRODUCT DESIGNATION | APPROX WT. LBS. | | LIST PRICE/ EACH |
| ZS* | Type 304 (CF8) Stainless Steel | -12 | 2.9 | 6 | 1,783.00 |
| | | -28 | 5.4 | 15 | 1,832.00 |
| | | -32 | 5.9 | 18 | 1,846.00 |
| | | -36 | 6.4 | 20 | 1,859.00 |
| | | -40 | 7.2 | 22 | 1,927.00 |
| | | -48 | 8.4 | 27 | 2,066.00 |
| | | -60 | 10.3 | 34 | 2,329.00 |
| OUTLET ADAPTERS | | | | | ADD/EACH |
| 2 | Two-Outlet Drain Body | | | | 114.00 |
| 3 | Three-Outlet Drain Body | | | | 224.00 |
| EO | End Outlet | | | | N/C |
| FS | Outlet Filter Screen | | | | 46.00 |
| STANDARD GRATE OPTIONS | | | | | LIST/EACH |
| LS* | Linear Slotted | -12 | | | 467.00 |
| | | -28 | | | 479.00 |
| | | -32 | | | 488.00 |
| | | -36 | | | 492.00 |
| | | -40 | | | 503.00 |
| | | -48 | | | 542.00 |
| | | -60 | | | 571.00 |
| DECORATIVE GRATE OPTIONS | | | | | LIST/EACH |
| BW | Basket Weave | -12 | | | 498.00 |
| | | -28 | | | 538.00 |
| | | -32 | | | 551.00 |
| | | -36 | | | 565.00 |
| | | -40 | | | 584.00 |
| | | -48 | | | 643.00 |
| | | -60 | | | 694.00 |
| DB | Decorative Block Grate | -12 | | | 498.00 |
| | | -28 | | | 538.00 |
| | | -32 | | | 551.00 |
| | | -36 | | | 565.00 |
| | | -40 | | | 584.00 |
| | | -48 | | | 643.00 |
| | | -60 | | | 694.00 |
| SG | Serenity Grate | -12 | | | 498.00 |
| | | -28 | | | 538.00 |
| | | -32 | | | 551.00 |
| | | -36 | | | 565.00 |
| | | -40 | | | 584.00 |
| | | -48 | | | 643.00 |
| | | -60 | | | 694.00 |
| TG | Tile Inlay Grate | -12 | | | 498.00 |
| | | -28 | | | 538.00 |
| | | -32 | | | 551.00 |
| | | -36 | | | 565.00 |
| | | -40 | | | 584.00 |
| | | -48 | | | 643.00 |
| | | -60 | | | 694.00 |
| WG | Slotted Wave Grate | -12 | | | 498.00 |
| | | -28 | | | 538.00 |
| | | -32 | | | 551.00 |
| | | -36 | | | 565.00 |
| | | -40 | | | 584.00 |
| | | -48 | | | 643.00 |
| | | -60 | | | 694.00 |

Z890 6" STAINLESS STEEL TRENCH DRAIN SYSTEM



Standard Length: 80"
Standard Grate Included: FS or PS

ENGINEERING SPECIFICATION

Channels shall be 80" long, 6" wide, and have a 4" wide throat. Modular channel sections shall be made of 16-gauge 304 stainless steel and shall be provided with a neoprene gasket for flanged connections. Channel shall be provided either flat (neutral) or with a 1.04% pre-slope. Channels shall be available with inverts ranging from 3.5" to 16.00". Choices of class A thru E grates shall be available with H-20 and/or FAA load ratings and/or ADA compliance with mechanical lockdown devices. End caps and catch basins shall be available to complement the channels and grates. End outlets, bottom outlets, and side outlets shall be available in 2", 3", 4", and 6" diameters. Trench drain shall be Flo-Thru model Z890.

NOTES

Type 316 Stainless Steel trench is available upon request. Please call customer care for pricing and lead time.

| PART NO. | 5' (1524MM) SLOPED & NEUTRAL SECTIONS | EACH |
|-----------|---|----------|
| 8901-8910 | Stainless Steel Channel System - (Includes Lockdowns) | 3,779.00 |

| PART NO. | GRATE OPTIONS | EACH |
|-----------------------|---|----------|
| -FS | Fabricated Stainless Steel Slotted Grate - Class A | 518.00 |
| -GG | Fiberglass Grate - Class A | 331.00 |
| -HPS | Heel-Proof Stainless Steel Slotted Grate - Class A | 373.00 |
| -PS | Perforated Stainless Steel Grate - Class A | 471.00 |
| -PSR | Stainless Steel Perforated Reverse Punch Grate - Class A | 229.00 |
| -RFSC | Reinforced Stainless Steel Slotted Grate - Class C | 1,101.00 |
| -RPSC | Reinforced Stainless Steel Perforated Grate - Class C | 1,098.00 |
| -RPSRC | Reinforced Stainless Steel Perforated Reverse Punch Anti-Slip ADA Grate - Class B | 699.00 |
| -SBG | Stainless Steel Bar Grate - Class E | 521.00 |
| -SCD | Stainless Steel Circular Decorative Grate - Class B | 635.00 |
| -SDD | Stainless Steel Diagonal Decorative Grate - Class B | 617.00 |
| -SOD | Stainless Steel Decorative Grate - Class B | POA |
| PART NO. | GRATES 24" (609.6MM) X 24" (609.6MM) | EACH |
| P890-E1 | Closed End Cap | 690.00 |
| P890-E2 | 2" (50.87mm) No-Hub End Outlet | 690.00 |
| P890-E3 | 3" (76.2mm) No-Hub End Outlet | 690.00 |
| P890-E4 | 4" (101.6mm) No-Hub End Outlet | 690.00 |
| P890-U2 | 2" (50.87mm) No-Hub Bottom Outlet | 690.00 |
| P890-U3 | 3" (76.2mm) No-Hub Bottom Outlet | 690.00 |
| P890-U4 | 4" (101.6mm) No-Hub Bottom Outlet | 690.00 |
| P890-GL | Grate Lockdown (Per 5' (1524mm) Channel) | 82.00 |
| P890-K | Anchor Flange (Per 5' (1524mm) Channel) | 253.00 |
| P890-KC | Clamp Collar and Pan with Weep Holes (Per 5' (1524mm) Channel) | 417.00 |
| P890-VP | Vandal-Proof Center Lockdown | 22.00 |
| P890-DB | 2" (50.87mm), 3" (76.2mm), 4" (101.6mm) Bottom Drop in Bucket | 493.00 |
| MISCELLANEOUS OPTIONS | | ADD/FOOT |
| -VG | Viton Gasket | 178.00 |

| Trench Number | Shallow Invert | | Deep Invert | | Flow Rate | | | Approx. Wt. | |
|---------------|----------------|-----|-------------|-----|-----------|-----|-------|-------------|------|
| | In. | mm | In. | mm | cfs | gpm | lps | lb | Kg |
| 89001 | 3.5 | 89 | 4.13 | 105 | 6 | 97 | 0.216 | 20 | 9 |
| 89002 | 4.13 | 105 | 4.76 | 121 | 8 | 124 | 0.276 | 21 | 9.5 |
| 89002N | - | - | - | - | - | - | - | 22 | 10 |
| 89003 | 4.76 | 121 | 5.39 | 137 | 10 | 151 | 0.336 | 23 | 10.4 |
| 89004 | 5.39 | 137 | 6.02 | 153 | 11 | 179 | 0.399 | 24 | 10.9 |
| 89004N | - | - | - | - | - | - | - | 25 | 11.3 |
| 89005 | 6.02 | 153 | 6.65 | 169 | 13 | 207 | 0.461 | 26 | 11.8 |
| 89006 | 6.65 | 169 | 7.28 | 185 | 15 | 235 | 0.524 | 27 | 12.2 |
| 89006N | - | - | - | - | - | - | - | 28 | 12.7 |
| 89007 | 7.28 | 185 | 7.91 | 201 | 17 | 263 | 0.586 | 29 | 13.1 |
| 89008 | 7.91 | 201 | 8.54 | 217 | 18 | 292 | 0.651 | 30 | 13.6 |
| 89008N | - | - | - | - | - | - | - | 31 | 14 |
| 89009 | 8.54 | 217 | 9.17 | 233 | 20 | 321 | 0.715 | 32 | 14.5 |
| 89010 | 9.17 | 233 | 9.8 | 249 | 22 | 349 | 0.778 | 34 | 15.4 |
| 89010N | - | - | - | - | - | - | - | 35 | 15.9 |
| 89011 | 9.8 | 249 | 10.43 | 265 | 24 | 378 | 0.842 | 35 | 15.9 |
| 89012 | 10.43 | 265 | 11.06 | 281 | 26 | 407 | 0.907 | 37 | 16.8 |
| 89012N | - | - | - | - | - | - | - | 38 | 17.2 |
| 89013 | 11.06 | 281 | 11.69 | 297 | 28 | 436 | 0.971 | 39 | 17.7 |
| 89014 | 11.69 | 297 | 12.32 | 313 | 29 | 465 | 1.036 | 40 | 18.1 |
| 89014N | - | - | - | - | - | - | - | 41 | 18.6 |
| 89015 | 12.32 | 313 | 12.95 | 329 | 31 | 494 | 1.101 | 42 | 19 |
| 89016 | 12.95 | 329 | 13.58 | 345 | 33 | 523 | 1.165 | 43 | 19.5 |
| 89016N | - | - | - | - | - | - | - | 44 | 20 |
| 89017 | 13.58 | 345 | 14.21 | 361 | 35 | 552 | 1.23 | 45 | 20.4 |
| 89018 | 14.21 | 361 | 14.84 | 377 | 37 | 581 | 1.295 | 46 | 20.8 |
| 89018N | - | - | - | - | - | - | - | 47 | 21.3 |
| 89019 | 14.84 | 377 | 15.47 | 393 | 39 | 610 | 1.359 | 48 | 21.8 |
| 89020 | 15.47 | 393 | 16.1 | 409 | 40 | 639 | 1.424 | 49 | 22.2 |

*Regularly furnished unless otherwise specified.

†Indicates grate will be shipped unpainted. For an additional charge, Zurn will paint the grates. Please contact your customer service representative for pricing.

For additional product information, please visit www.zurn.ca

Z895 12" STAINLESS STEEL TRENCH DRAIN SYSTEM



Standard Length: 96"
Standard Grate Included: FS or PS

ENGINEERING SPECIFICATION

Channels shall be 96" long, 12" wide, and have a 9-1/4" wide throat. Modular channel sections shall be made of 12-gauge 304 stainless steel. Channel shall be provided with no slope (neutral) or with a 1.04% built-in slope. Channels shall be available with inverts ranging from 6.00" to 18.50". Choices of class A thru C grates shall be available with H-20 and/or FAA load ratings and/or ADA compliance with mechanical lockdown devices. End caps and catch basins shall be available to complement the channels and grates. End outlets, bottom outlets, and side outlets shall be available in 4", 6", and 8" diameters. Trench drain shall be Flo-Thru model Z895.

NOTES

Type 316 Stainless Steel trench is available upon request. Please call customer care for pricing and lead time.

| MADE IN THE U.S.A. (HIGHLIGHTED IN GRAY) | | | | |
|--|--|------------------|------------------|------------------|
| PREFIX | DESCRIPTION | CHANNEL NUMBER | LIST PRICE/ EACH | LIST PRICE/ FOOT |
| Z* | 96" #12-Gauge Type 304 Stainless Steel Trench with Stamped Stainless Steel Grate with Four Stainless Steel Lockdowns | 89501 thru 89515 | 13,968.00 | 1,747.00 |
| OPTIONS | | | ADD/EACH | |
| Endcaps/Outlet | | | 907.00 | |
| GRATE OPTIONS | | | ADD/EACH | ADD/FOOT |
| P12-FS | Fabricated Stainless Steel Slotted Grate - Class A | | 1,115.00 | 558.00 |
| P12-GG | Fiberglass Grate (Not Made in U.S.A. Configurable) - Class A | | 1,805.00 | 365.00 |
| P12-PS | Stainless Steel Perforated Grate - Class A | | 1,497.00 | 749.00 |
| P12-PSR | Stainless Steel Perforated Reverse Punch Grate - Class A | | 3,735.00 | 751.00 |
| P12-RFSC | Reinforced Stainless Steel Slotted Grate - Class C | | 2,064.00 | 1,032.00 |
| P12-RPSC | Reinforced Stainless Steel Perforated Grate - Class C | | 2,213.00 | 1,107.00 |
| P12-RPSRC | Reinforced Stainless Steel Perforated Reverse Punch Anti-Slip Grate - Class B | | 5,518.00 | 1,107.00 |
| P12-SBG-L | Stainless Steel Bar Grate - Class C | | 3,433.00 | 1,717.00 |
| P12-SSCD | Reinforced Stainless Steel Solid Cover - Class B | | 4,775.00 | 958.00 |
| MISCELLANEOUS OPTIONS | | | ADD/EACH | ADD/FOOT |
| P895-K | Anchor Flange | | 1,706.00 | 345.00 |
| P895-KC | Clamp Collar and Pan with Weep Holes | | 2,565.00 | 517.00 |
| P895-VG | Viton Gasket | | N/C | N/C |
| P895-VP | Vandal-Proof Center Lockdown | | 125.00 | 27.00 |
| | | | ADD/EACH | |
| P895-DB | Bottom Drop-In Bucket | | 733.00 | |
| SERVICE CHARGES | | | ADD/EACH | |
| Fabrication - 45°; 90°; Tee Fabs | | | 7,227.00 | |
| - Cross Fabs | | | 14,444.00 | |

| Trench Number | Shallow Invert | | Deep Invert | | Flow Rate | | | Approx. Wt. | |
|---------------|----------------|-----|-------------|-----|-----------|-----|-------|-------------|------|
| | In. | mm | In. | mm | cfs | gpm | lps | lb | Kg |
| 89501 | 6.00 | 152 | 6.63 | 168 | 548 | 35 | 1.221 | 70 | 31.7 |
| 89502 | 6.63 | 168 | 7.25 | 184 | 652 | 41 | 1.453 | 73 | 33.1 |
| 89502N | 7.25 | 184 | 7.25 | 184 | - | - | - | 74 | 33.5 |
| 89503 | 7.25 | 184 | 7.88 | 200 | 759 | 48 | 1.691 | 76 | 34.5 |
| 89504 | 7.88 | 200 | 8.50 | 216 | 868 | 55 | 1.934 | 80 | 36.3 |
| 89504N | 8.50 | 216 | 8.50 | 216 | - | - | - | 81 | 36.7 |
| 89505 | 8.50 | 216 | 9.13 | 232 | 978 | 62 | 3.179 | 83 | 37.6 |
| 89506 | 9.13 | 232 | 9.75 | 248 | 1090 | 69 | 2.429 | 86 | 39 |
| 89506N | 9.75 | 248 | 9.75 | 248 | - | - | - | 87 | 39.4 |
| 89507 | 9.75 | 248 | 10.38 | 264 | 1203 | 76 | 2.68 | 90 | 40.8 |
| 89508 | 10.38 | 264 | 11.00 | 279 | 1316 | 83 | 2.932 | 93 | 42.2 |
| 89508N | 11.00 | 279 | 11.00 | 279 | - | - | - | 94 | 42.6 |
| 89509 | 11.00 | 279 | 11.63 | 295 | 1431 | 91 | 3.189 | 96 | 43.5 |
| 89510 | 11.63 | 295 | 12.25 | 311 | 1546 | 98 | 3.445 | 99 | 44.9 |
| 89511 | 12.25 | 311 | 12.88 | 327 | 1662 | 105 | 3.703 | 103 | 46.7 |
| 89512 | 12.88 | 327 | 13.50 | 343 | 1779 | 113 | 3.964 | 106 | 48 |
| 89512N | 13.50 | 343 | 13.50 | 343 | - | - | - | 107 | 48.5 |
| 89513 | 13.50 | 343 | 14.13 | 359 | 1896 | 120 | 4.225 | 109 | 49.4 |
| 89514 | 14.13 | 359 | 14.75 | 375 | 2013 | 127 | 4.485 | 113 | 51.2 |
| 89514N | 14.75 | 375 | 14.75 | 375 | - | - | - | 114 | 51.7 |
| 89515 | 14.75 | 375 | 15.38 | 391 | 2113 | 135 | 4.748 | 116 | 52.6 |
| 89516 | 15.38 | 391 | 16.00 | 406 | 2249 | 142 | 5.011 | 119 | 54 |
| 89516N | 16.00 | 406 | 16.00 | 406 | - | - | - | 120 | 54.4 |
| 89517 | 16.00 | 406 | 16.63 | 422 | 2368 | 150 | 5.276 | 122 | 55.3 |
| 89518 | 16.63 | 422 | 17.25 | 438 | 2487 | 157 | 5.541 | 126 | 57.1 |
| 89518N | 17.25 | 438 | 17.25 | 438 | - | - | - | 127 | 57.6 |
| 89519 | 17.25 | 438 | 17.88 | 454 | 2606 | 165 | 5.807 | 129 | 58.5 |
| 89520 | 17.88 | 454 | 18.50 | 470 | 2752 | 174 | 6.132 | 132 | 59.9 |

For additional product information, please visit www.zurn.ca

*Regularly furnished unless otherwise specified.

†Indicates grate will be shipped unpainted. For an additional charge, Zurn will paint the grates. Please contact your customer service representative for pricing.

Z898 18" WIDE TRENCH DRAIN SYSTEM

Standard length: 60"
Standard grate: FS

ENGINEERING SPECIFICATION

18" Wide Pre-Sloped Trench Drainage System with 1/8" per foot slope. #12 Gage Type 304 Stainless Steel drain channel with bolted flanged connection complete with rubber neoprene flange gasket, and stamped stainless steel grate.

| PREFIX | DESCRIPTION | CHANNEL NUMBER | LIST PRICE/ EACH | LIST PRICE/ FOOT |
|-----------------------------------|--|---------------------|---------------------|----------------------|
| Z* | #12 Gage Type 304 Stainless Steel Trench | 89801 through 89806 | 3,800.00 | 1,901.00 |
| Z* | #12 Gage Type 304 Stainless Steel Trench | 89807 through 89820 | 4,885.00 | 2,444.00 |
| ENDCAP/OUTLET OPTIONS | | | | ADD/EACH |
| Endcaps/Outlet | | | | 1,269.00 |
| GRATE OPTIONS - NO STANDARD GRATE | | | | ADD/EACH ADD/FOOT |
| -RFS | Fabricated Stainless Steel Slotted Grate - Class A | | 6,359.00 | 3,181.00 |
| -RFSC | Fabricated Stainless Steel Slotted Grate - Class C | | 6,688.00 | 3,346.00 |
| -RPS | Stainless Steel Perforated Grate - Class A | | 6,359.00 | 3,181.00 |
| -SBG | Stainless Steel Bar Grate - Class A | | 4,891.00 | 2,448.00 |
| -GG | Fiberglass Grate - Class A | | 1,284.00 | 643.00 |
| MISCELLANEOUS OPTIONS | | | | ADD/EACH |
| -DB | Bottom Drop-In Bucket | | | 733.00 |
| SERVICE CHARGES | | | | ADD/EACH |
| Fabrication - 45°; 90°; Tee Fabs | | | | 8,673.00 |
| - Cross Fabs | | | | 17,329.00 |

| Trench Number | Overall Depth | | | | Max. Flow Rate | | | Approx. Wt. (Less Grates) | |
|------------------|---------------|-----|--------|-----|----------------|------|-----|---------------------------|----|
| | A Min. | | B Max. | | | | | | |
| | In. | mm | In. | mm | cfs | gpm | lps | lb | Kg |
| 89801 | 6.00 | 152 | 6.63 | 168 | 1 | 640 | 40 | 60 | 27 |
| 89802 | 6.63 | 168 | 7.25 | 184 | 2 | 805 | 51 | 62 | 28 |
| 89802N | 7.25 | 184 | 7.25 | 184 | - | - | - | 64 | 29 |
| 89803 | 7.25 | 184 | 7.88 | 200 | 2 | 982 | 62 | 65 | 29 |
| 89804 | 7.88 | 200 | 8.50 | 216 | 3 | 1167 | 74 | 67 | 30 |
| 89804N | 8.50 | 216 | 8.50 | 216 | - | - | - | 68 | 31 |
| 89805 | 8.50 | 216 | 9.13 | 232 | 3 | 1361 | 86 | 69 | 31 |
| 89806 | 9.13 | 232 | 9.75 | 248 | 3 | 1562 | 99 | 72 | 33 |
| 89806N | 9.75 | 248 | 9.75 | 248 | - | - | - | 73 | 33 |
| 89807 | 9.75 | 248 | 10.38 | 264 | 4 | 1769 | 112 | 74 | 34 |
| 89808 | 10.38 | 264 | 11.00 | 279 | 4 | 1982 | 125 | 76 | 34 |
| 89808N | 11.00 | 279 | 11.00 | 279 | - | - | - | 77 | 35 |
| 89809 | 11.00 | 279 | 11.63 | 295 | 5 | 2200 | 139 | 78 | 35 |
| 89810 | 11.63 | 295 | 12.25 | 311 | 5 | 2423 | 153 | 81 | 37 |
| 89810N | 12.25 | 311 | 12.25 | 311 | - | - | - | 82 | 37 |
| 89811 | 12.25 | 311 | 12.88 | 327 | 6 | 2651 | 167 | 83 | 38 |
| 89812 | 12.88 | 327 | 13.50 | 343 | 6 | 2882 | 182 | 85 | 39 |
| 89812N | 13.50 | 343 | 13.50 | 343 | - | - | - | 86 | 39 |
| 89813 | 13.50 | 343 | 14.13 | 359 | 7 | 3117 | 197 | 88 | 40 |
| 89814 | 14.13 | 359 | 14.75 | 375 | 7 | 3356 | 212 | 90 | 41 |
| 89814N | 14.75 | 375 | 14.75 | 375 | - | - | - | 91 | 41 |
| 89815 | 14.75 | 375 | 15.38 | 391 | 8 | 3597 | 227 | 92 | 42 |
| 89816 | 15.38 | 391 | 16.00 | 406 | 9 | 3841 | 242 | 95 | 43 |
| 89816N | 16.00 | 406 | 16.00 | 406 | - | - | - | 96 | 44 |
| 89817 | 16.00 | 406 | 16.63 | 422 | 9 | 4089 | 258 | 97 | 44 |
| 89818 | 16.63 | 422 | 17.25 | 438 | 10 | 4338 | 274 | 99 | 45 |
| 89818N | 17.25 | 438 | 17.25 | 438 | - | - | - | 100 | 45 |
| 89819 | 17.25 | 438 | 17.88 | 454 | 10 | 4590 | 290 | 102 | 46 |
| 89820 | 17.88 | 454 | 18.50 | 470 | 11 | 4844 | 306 | 104 | 47 |

*Regularly furnished unless otherwise specified.

†Indicates grate will be shipped unpainted. For an additional charge, Zurn will paint the grates.
Please contact your customer service representative for pricing.

For additional product information, please visit www.zurn.ca

PERMA-TRENCH®

STAINLESS / SANI-FLO®

SLOT DRAIN / HI-CAP

ALUMINUM TRENCH

FIBERGLASS

FRAME AND GRATE SYSTEMS

OIL SEPARATORS

Z894 24" WIDE TRENCH DRAIN SYSTEM

Standard length: 24"
Standard grate: FS

ENGINEERING SPECIFICATION

24" Wide Pre-Sloped Trench Drainage System with 1/8" per foot slope. #12 Gage Type 304 Stainless Steel drain channel with bolted flanged connection complete with rubber neoprene flange gasket, and stamped stainless steel grate.

| PREFIX | DESCRIPTION | CHANNEL NUMBER | LIST PRICE/ EACH | LIST PRICE/ FOOT |
|-----------------------------------|---|----------------------------------|---------------------|---------------------|
| Z* | #12 Gage Type 304 Stainless Steel Trench | Section 1-6 (6"-9.75" invert) | 4,576.00 | 2,289.00 |
| Z* | #12 Gage Type 304 Stainless Steel Trench | Section 7-12 (9.75"- 13.5") | 5,158.00 | 2,580.00 |
| ENDCAP/OUTLET OPTIONS | | | ADD/EACH | |
| Endcaps/Outlet | | | 574.00 | |
| GRATE OPTIONS - NO STANDARD GRATE | | | ADD/EACH | ADD/FOOT |
| -FS | Fabricated Stainless Steel Slotted Grate - Class A | | 5,522.00 | 2,763.00 |
| -PS | Fabricated Stainless Steel Perforated Grate - Class A | | 5,522.00 | 2,763.00 |
| -RFS | Fabricated Stainless Steel Slotted Grate - Class C | | 7,095.00 | 3,548.00 |
| -RPS | Stainless Steel Perforated Grate - Class C | | 7,095.00 | 3,548.00 |
| -SBG | Stainless Steel Bar Grate - Class A | | 15,511.00 | 7,758.00 |
| -GG | Fiberglass Grate - Class A | | 2,338.00 | 1,171.00 |
| MISCELLANEOUS OPTIONS | | | ADD/EACH | |
| -DB | Bottom Drop-In Bucket | | 606.00 | |
| SERVICE CHARGES | | | ADD/EACH | |
| Fabrication - 45°; 90°; Tee Fabs | | | 6,402.00 | |
| - Cross Fabs | | | 12,795.00 | |

| Trench Number | Overall Depth | | | | Max. Flow Rate | | | Approx. Wt. (Less Grates) | |
|------------------|---------------|-----|--------|-----|----------------|------|-----|---------------------------|----|
| | A Min. | | B Max. | | | | | | |
| | In. | mm | In. | mm | cfs | gpm | lps | lb | Kg |
| 89401 | 6.00 | 152 | 6.63 | 168 | 3 | 1299 | 82 | 70 | 32 |
| 89402 | 6.63 | 168 | 7.25 | 184 | 4 | 1636 | 103 | 72 | 33 |
| 89402N | 7.25 | 184 | 7.25 | 184 | - | - | - | 73 | 33 |
| 89403 | 7.25 | 184 | 7.88 | 200 | 4 | 1991 | 126 | 74 | 34 |
| 89404 | 7.88 | 200 | 8.50 | 216 | 5 | 2362 | 149 | 76 | 34 |
| 89404N | 8.50 | 216 | 8.50 | 216 | - | - | - | 77 | 35 |
| 89405 | 8.50 | 216 | 9.13 | 232 | 6 | 2746 | 173 | 78 | 35 |
| 89406 | 9.13 | 232 | 9.75 | 248 | 7 | 3142 | 198 | 80 | 36 |
| 89406N | 9.75 | 248 | 9.75 | 248 | - | - | - | 81 | 37 |
| 89407 | 9.75 | 248 | 10.38 | 264 | 8 | 3548 | 224 | 82 | 37 |
| 89408 | 10.38 | 264 | 11.00 | 279 | 9 | 3963 | 250 | 84 | 38 |
| 89408N | 11.00 | 279 | 11.00 | 279 | - | - | - | 85 | 39 |
| 89409 | 11.00 | 279 | 11.63 | 295 | 10 | 4387 | 277 | 86 | 39 |
| 89410 | 11.63 | 295 | 12.25 | 311 | 11 | 4817 | 304 | 88 | 40 |
| 89410N | 12.25 | 311 | 12.25 | 311 | - | - | - | 89 | 40 |
| 89411 | 12.25 | 311 | 12.88 | 327 | 12 | 5253 | 331 | 90 | 41 |
| 89412 | 12.88 | 327 | 13.50 | 343 | 13 | 5696 | 359 | 92 | 42 |
| 89412N | 13.50 | 343 | 13.50 | 343 | - | - | - | 93 | 42 |
| 89413 | 13.50 | 343 | 14.13 | 359 | 14 | 6143 | 388 | 94 | 43 |
| 89414 | 14.13 | 359 | 14.75 | 375 | 15 | 6595 | 416 | 96 | 44 |
| 89414N | 14.75 | 375 | 14.75 | 375 | - | - | - | 97 | 44 |
| 89415 | 14.75 | 375 | 15.38 | 391 | 16 | 7051 | 445 | 98 | 44 |
| 89416 | 15.38 | 391 | 16.00 | 406 | 17 | 7512 | 474 | 100 | 45 |
| 89416N | 16.00 | 406 | 16.00 | 406 | - | - | - | 101 | 46 |
| 89417 | 16.00 | 406 | 16.63 | 422 | 18 | 7975 | 503 | 102 | 46 |
| 89418 | 16.63 | 422 | 17.25 | 438 | 19 | 8442 | 533 | 104 | 47 |
| 89418N | 17.25 | 438 | 17.25 | 438 | - | - | - | 105 | 48 |
| 89419 | 17.25 | 438 | 17.88 | 454 | 20 | 8912 | 562 | 106 | 48 |
| 89420 | 17.88 | 454 | 18.50 | 470 | 21 | 9385 | 592 | 108 | 49 |

Z899-100 ELEVATOR TRENCH DRAIN SYSTEM



Standard Length: 5'

ENGINEERING SPECIFICATION

Channels shall be 5' long, 3/4" wide slot and have a 2-1/4" wide throat. Modular channel sections shall be made of 16-gauge type 304 stainless steel. Channel shall be provided with no slope (neutral) or with a 1.04% built-in slope. Channels shall be available with inverts ranging from 4" to 16.5". End caps and catch basins shall be available to complement the channels. Trench drain shall be Flo-Thru model Z891.

NOTES

Type 316 Stainless Steel trench is available upon request. Please call customer care for pricing and lead time.

| MADE IN THE U.S.A. (HIGHLIGHTED IN GRAY) | | | |
|--|--|-------------------------|------------|
| PREFIX | DESCRIPTION | CHANNEL NUMBER | LIST PRICE |
| Z* | Type 304 Stainless Steel (regularly furnished) - Custom sizes from 36"-96" with SWG Stainless Wire Grate | Z899-100-36-SWG | 21,346.00 |
| | | Z899-100-48-SWG | 28,441.00 |
| | | Z899-100-60-SWG | 35,555.00 |
| | | Z899-100-72-SWG | 42,652.00 |
| | | Z899-100-96-SWG | 56,869.00 |
| | | Z899-100-SWG (per foot) | 8,257.00 |
| Z* | Type 304 Stainless Steel (regularly furnished) - Custom sizes from 36"-96" with -FS Fabricated Slotted Stainless Steel Grate | Z899-100-36-FS | 22,470.00 |
| | | Z899-100-48-FS | 29,952.00 |
| | | Z899-100-60-FS | 37,436.00 |
| | | Z899-100-72-FS | 44,925.00 |
| | | Z899-100-96-FS | 59,882.00 |
| | | Z899-100-FS (per foot) | 8,612.00 |
| SUFFIX OPTIONS | | | ADD/EACH |
| -P | 1/2" Trap Primer Connection | | 891.00 |
| -LAS | Less Anchor Straps | | N/C |
| -BPC | Black Powder Coating | | 452.00 |

Z891 STAINLESS STEEL SLOTTED DRAINAGE SYSTEM



Standard Length: 5'

ENGINEERING SPECIFICATION

Channels shall be 5' long, 3/4" wide slot and have a 2-1/4" wide throat. Modular channel sections shall be made of 16-gauge type 304 stainless steel. Channel shall be provided with no slope (neutral) or with a 1.04% built-in slope. Channels shall be available with inverts ranging from 4" to 16.5". End caps and catch basins shall be available to complement the channels. Trench drain shall be Flo-Thru model Z891.

NOTES

Type 316 Stainless Steel trench is available upon request. Please call customer care for pricing and lead time.

| PREFIX | DESCRIPTION | LIST PRICE/ EACH | LIST PRICE/ FOOT |
|--------|--|------------------|------------------|
| Z* | 5' #16 Gauge Type 304 Modular Stainless Steel Slotted Trench Drain with Bolted Flange Connection | 5,599.00 | 1,124.00 |

| MADE IN THE U.S.A. (HIGHLIGHTED IN GRAY) | | | |
|--|---|----------|----------------------|
| OUTLET ADAPTERS | | | ADD/EACH |
| P891-E1 | Closed End Cap | | 733.00 |
| P891-E2 | 2" No-Hub End Outlet | | 733.00 |
| P891-U2 | 2" No-Hub Bottom Outlet | | 733.00 |
| MISCELLANEOUS OPTIONS | | | ADD/EACH ADD/FOOT |
| P891-HD | Class E Heavy Duty Reinforcement | 1,950.00 | 394.00 |
| P891-K | Waterproofing Flange | 1,474.00 | 299.00 |
| P891-KC | Pan and Clamping Collar with Weep Holes | 2,198.00 | 443.00 |

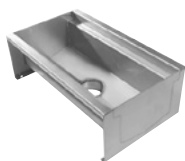
| Trench Number | Shallow Invert | | Deep Invert | | Flow Rate | | | Approx. Wt. | |
|---------------|----------------|-----|-------------|-----|-----------|-----|-----|-------------|------|
| | In. | mm | In. | mm | cfs | gpm | lps | lb | Kg |
| 89101 | 4 | 102 | 4.63 | 118 | 51 | 3 | 194 | 15 | 6.8 |
| 89102 | 4.63 | 118 | 5.25 | 133 | 67 | 4 | 255 | 16 | 7.3 |
| 89103 | 5.25 | 133 | 5.88 | 149 | 84 | 5 | 316 | 17 | 7.7 |
| 89104 | 5.88 | 149 | 6.50 | 165 | 100 | 6 | 378 | 18 | 8.2 |
| 89105 | 6.50 | 165 | 7.13 | 181 | 117 | 7 | 441 | 19 | 8.6 |
| 89106 | 7.13 | 181 | 7.75 | 197 | 135 | 8 | 504 | 20 | 9.1 |
| 89107 | 7.75 | 197 | 8.38 | 213 | 150 | 9 | 568 | 21 | 9.6 |
| 89108 | 8.38 | 213 | 9.00 | 229 | 167 | 11 | 632 | 22 | 10 |
| 89109 | 9.00 | 229 | 9.63 | 245 | 184 | 12 | 696 | 23 | 10.5 |
| 89110 | 9.63 | 245 | 10.00 | 260 | 201 | 13 | 760 | 24 | 10.9 |

*Regularly furnished unless otherwise specified.

†Indicates grate will be shipped unpainted. For an additional charge, Zurn will paint the grates. Please contact your customer service representative for pricing.

For additional product information, please visit www.zurn.ca

Z893 STAINLESS STEEL FLOOR RECEPTOR WITH BAR GRATE



ENGINEERING SPECIFICATION

Channels are made of #14 ga. fabricated Stainless Steel conforming to ASTM A-240 (Type 304). Channels weigh less than 4.15 lb per linear foot, have a smooth, 1.5" radiused self cleaning bottom with a Manning's coefficient of .009. Channels have feet for patty pour or leveling studs standard to secure trench in its final location with 4" No-Hub bottom outlet. All welds must be performed by a certified welder per ASTM standard AWS D1.6. Channels to be produced in the U.S.A.

NOTES

Standard size units are shown, special sizes are available upon request.

| SIZE W" X L" | GRATE WIDTH | SBG QTY. | LIST PRICE | -SBG LIST | -RFS LIST | -RPS LIST |
|--------------|-------------|----------|------------|-----------|-----------|-----------|
| 12x 24 | 11.25 | 1 | 6,535.00 | 1,835.00 | 2,915.00 | 2,915.00 |
| 12x 30 | 11.25 | 2 | 7,517.00 | 3,667.00 | 5,012.00 | 5,012.00 |
| 12x 36 | 11.25 | 2 | 7,517.00 | 3,667.00 | 5,278.00 | 5,278.00 |
| 12x 48 | 11.25 | 2 | 7,864.00 | 3,667.00 | 5,814.00 | 5,814.00 |
| 12x 60 | 11.25 | 3 | 8,844.00 | 5,497.00 | 8,183.00 | 8,183.00 |
| 12x 72 | 11.25 | 3 | 11,624.00 | 5,497.00 | 8,716.00 | 8,716.00 |
| 12x 84 | 11.25 | 4 | 12,541.00 | 7,327.00 | 11,088.00 | 11,088.00 |
| 12x 96 | 11.25 | 4 | 14,128.00 | 7,327.00 | 11,624.00 | 11,624.00 |
| 12x 108 | 11.25 | 5 | 15,573.00 | 9,159.00 | 13,990.00 | 13,990.00 |
| 12x 120 | 11.25 | 5 | 15,573.00 | 9,159.00 | 14,526.00 | 14,526.00 |
| 18x 24 | 17.25 | 1 | 10,569.00 | 1,955.00 | 3,285.00 | 3,285.00 |
| 18x 30 | 17.25 | 2 | 16,174.00 | 3,906.00 | 5,569.00 | 5,569.00 |
| 18x 36 | 17.25 | 2 | 16,174.00 | 3,906.00 | 5,898.00 | 5,898.00 |
| 18x 48 | 17.25 | 2 | 16,753.00 | 3,906.00 | 6,658.00 | 6,384.00 |
| 18x 60 | 17.25 | 3 | 21,420.00 | 5,857.00 | 9,172.00 | 9,172.00 |
| 18x 72 | 17.25 | 3 | 25,549.00 | 5,857.00 | 9,836.00 | 9,836.00 |
| 18x 84 | 17.25 | 4 | 27,283.00 | 7,810.00 | 12,448.00 | 12,448.00 |
| 18x 96 | 17.25 | 4 | 27,360.00 | 7,810.00 | 13,110.00 | 13,110.00 |
| 18x 108 | 17.25 | 5 | 33,250.00 | 9,762.00 | 15,726.00 | 15,726.00 |
| 18x 120 | 17.25 | 5 | 33,250.00 | 9,762.00 | 16,388.00 | 16,388.00 |
| 24x 24 | 23.25 | 2 | 15,584.00 | 3,088.00 | 10,173.00 | 10,173.00 |
| 24x 30 | 23.25 | 2 | 13,549.00 | 6,175.00 | 15,030.00 | 15,030.00 |
| 24x 36 | 23.25 | 2 | 13,549.00 | 6,175.00 | 16,801.00 | 16,801.00 |
| 24x 48 | 23.25 | 3 | 16,793.00 | 9,259.00 | 23,425.00 | 23,425.00 |
| 24x 60 | 23.25 | 3 | 17,484.00 | 9,259.00 | 26,968.00 | 26,968.00 |
| 24x 72 | 23.25 | 4 | 21,289.00 | 12,345.00 | 33,595.00 | 33,595.00 |
| 24x 84 | 23.25 | 5 | 25,608.00 | 15,428.00 | 40,217.00 | 40,217.00 |
| 24x 96 | 23.25 | 5 | 27,117.00 | 15,428.00 | 43,759.00 | 43,759.00 |
| 24x 108 | 23.25 | 6 | 30,363.00 | 18,514.00 | 50,387.00 | 50,387.00 |
| 24x 120 | 23.25 | 6 | 35,268.00 | 18,514.00 | 53,925.00 | 53,925.00 |

| Size | No. of Grates | Dimensions in Inches [mm] | | | | | |
|------|---------------|---------------------------|-----|-----|------|-----|-----|
| | | A | | B | | C | |
| | | In. | mm | In. | mm | In. | mm |
| 12 | 1 | 14.3 | 363 | 24 | 610 | 4 | 102 |
| | 2 | | | 24 | 1219 | | |
| | 3 | | | 72 | 1829 | | |
| | 5 | | | 120 | 3048 | | |
| 18 | 1 | 20.3 | 516 | 24 | 610 | | |
| | 2 | | | 24 | 1219 | | |
| | 3 | | | 72 | 1829 | | |
| | 5 | | | 120 | 3048 | | |
| 24 | 1 | 26.6 | 676 | 24 | 610 | | |
| | 2 | | | 24 | 1219 | | |
| | 3 | | | 72 | 1829 | | |
| | 5 | | | 120 | 3048 | | |

Z897 STAINLESS STEEL CATCH BASIN



Standard Grate Included: FS or PS

ENGINEERING SPECIFICATION

Catch Basins shall be 6" wide x 20" long x 20" deep, 12" wide x 24" long x 24" deep, or 24" wide x 24" long x 24" deep and shall be made of #16- or #12-gauge 304 stainless steel. Choices of class A thru E grates shall be available with H-20, FAA, and/or ADA compliance. Outlets in 2", 3", 4", 6", and 8" diameters shall be available. Catch Basin shall be Flo-Thru model Z897.

NOTES

Type 316 Stainless Steel trench is available upon request. Please contact customer care for pricing and lead time. Please contact customer care for mechanical lockdown availability and pricing.

| PREFIX | DESCRIPTION | NOMINAL SIZE | APPROX WT. LBS. (LESS GRATES) | STANDARD PRICE |
|--------|-----------------------------|--------------|-------------------------------|----------------|
| Z* | Stainless Steel Catch Basin | 6x20 | 49 | 11,403.00 |
| | | 12x24 | 67 | 13,313.00 |
| | | 24x24 | 88 | 15,213.00 |

| OUTLET OPTIONS | | | |
|----------------|--|--|--------|
| 2", 3", 4", 6" | | | 549.00 |

| GRATE OPTIONS | | 6X20 (P6-OPTION) | 12X24 (P12-OPTION) | 24X24 (P24-OPTION) |
|---------------|---|------------------|--------------------|--------------------|
| -GG | Fiberglass Grate - Class A | 363.00 | 365.00 | 1,409.00 |
| -HPS | Heel-Proof Stainless Steel Slotted Grate - Class A | 590.00 | - | - |
| -RFSC | Reinforced Stainless Steel Slotted Grate - Class C | 334.00 | 1,032.00 | - |
| -RPSC | Reinforced Stainless Steel Perforated ADA Grate - Class C | 331.00 | 1,107.00 | - |
| -RPSRC | Reinforced Stainless Steel Perforated Reverse Punch Anti-Slip ADA Grate - Class C | 761.00 | 1,007.00 | - |
| -SBG | Stainless Steel Bar Grate - Class E | 567.00 | - | - |
| -SCD | Stainless Steel Circular Decorative Grate - Class B | 590.00 | - | - |
| -SDD | Stainless Steel Diagonal Decorative Grate - Class B | 590.00 | - | - |
| -SOD | Stainless Steel Decorative Grate - Class B | 590.00 | - | - |

| MADE IN THE U.S.A. (HIGHLIGHTED IN GRAY) | | | | |
|--|--|--------|--------|----------|
| GRATE OPTIONS | | 6X20 | 12X24 | 24X24 |
| -FS | Fabricated Stainless Steel Slotted Grate - Class A | 159.00 | 559.00 | 3,649.00 |
| -PS | Perforated Stainless Steel Grate - Class A | 144.00 | 751.00 | 4,887.00 |
| -SBG-L | Stainless Steel Bar Grate - Class C | - | 920.00 | - |
| MISCELLANEOUS OPTIONS | | | | ADD/EACH |
| -K | Anchor Flange | 314.00 | 542.00 | 770.00 |
| -KC | Clamp Collar and Pan | 469.00 | 690.00 | 918.00 |
| -VP | Vandal-Proof Center Lockdown | 239.00 | 239.00 | 239.00 |
| -YS | Stainless Steel Sediment Bucket | 658.00 | 952.00 | 1,599.00 |

PERMA-TRENCH®

STAINLESS / SANI-FLO®

SLOT DRAIN / HI-CAP

ALUMINUM TRENCH

FIBERGLASS

FRAME AND GRATE SYSTEMS

OIL SEPARATORS

*Regularly furnished unless otherwise specified.

†Indicates grate will be shipped unpainted. For an additional charge, Zurn will paint the grates. Please contact your customer service representative for pricing.

NOTES

PERMA-TRENCH®

STAINLESS / SANI-FLO®

SLOT DRAIN / HI-CAP

ALUMINUM TRENCH

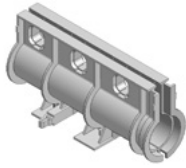
FIBERGLASS

FRAME AND GRATE SYSTEMS

OIL SEPARATORS

For additional product information, please visit www.zurn.ca

Z888-4 SLOTTED DRAINAGE SYSTEM



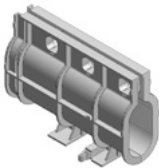
Standard Length: 40" (3.33')

ENGINEERING SPECIFICATION

Slot drain shall be 40" long, 4" wide, and 8" invert with 1/2" slot opening (ADA compliant). Drain shall be made of High Density Polyethylene (HDPE) and be UV-10 stabilized. Drain shall have rebar clips molded onto bedding feet and/or bedding feet shall be used for positioning and anchoring purposes. Overlap connection shall be interlocked.

| PART NO. | 80" (2032MM) SECTIONS | EACH |
|-----------|-----------------------------------|--------|
| P888-4 | 4" (101.6mm) Channel Only | 901.00 |
| PART NO. | EACH | |
| P888-4-E1 | Closed End Cap | 42.00 |
| P888-4-E2 | 2" (50.87mm) No-Hub End Outlet | 42.00 |
| P888-4-E3 | 3" (76.2mm) No-Hub End Outlet | 42.00 |
| P888-4-E4 | 4" (101.6mm) No-Hub End Outlet | 42.00 |
| P888-4-U2 | 2" (50.87mm) No-Hub Bottom Outlet | 46.00 |
| P888-4-U3 | 3" (76.2mm) No-Hub Bottom Outlet | 46.00 |
| P888-4-U4 | 4" (101.6mm) No-Hub Bottom Outlet | 46.00 |

Z888-6 SLOTTED DRAINAGE SYSTEM



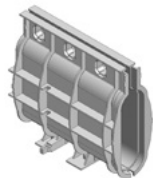
Standard Length: 40" (3.33')

ENGINEERING SPECIFICATION

Slot drain shall be 40" long, 4" wide, and 11-3/4" invert with 1/2" slot opening (ADA compliant). Drain shall be made of High Density Polyethylene (HDPE) and be UV-10 stabilized. Drain shall have rebar clips molded onto bedding feet and/or bedding feet shall be used for positioning and anchoring purposes. Overlap connection shall be interlocked.

| PART NO. | 80" (2032MM) SECTIONS | EACH |
|-----------|-----------------------------------|--------|
| P888-6 | 6" (152.4mm) Channel Only | 978.00 |
| PART NO. | EACH | |
| P888-6-E1 | Closed End Cap | 56.00 |
| P888-6-E2 | 2" (50.87mm) No-Hub End Outlet | 56.00 |
| P888-6-E3 | 3" (76.2mm) No-Hub End Outlet | 56.00 |
| P888-6-E4 | 4" (101.6mm) No-Hub End Outlet | 56.00 |
| P888-6-U2 | 2" (50.87mm) No-Hub Bottom Outlet | 56.00 |
| P888-6-U3 | 3" (76.2mm) No-Hub Bottom Outlet | 56.00 |
| P888-6-U4 | 4" (101.6mm) No-Hub Bottom Outlet | 56.00 |

Z888-8 SLOTTED DRAINAGE SYSTEM



Standard Length: 40" (3.33')

ENGINEERING SPECIFICATION

Slot drain shall be 40" long, 4" wide, and 17-5/8" invert with 1/2" wide slot opening (ADA compliant). Drain shall be made of High Density Polyethylene (HDPE) and be UV-10 stabilized. Drain shall have rebar clips molded onto bedding feet and/or bedding feet shall be used for positioning and anchoring purposes. Overlap connection shall be interlocked.

| PART NO. | 80" (2032MM) SECTIONS | EACH |
|-----------|-----------------------------------|----------|
| P888-8 | 8" (203.2mm) Channel Only | 1,193.00 |
| PART NO. | EACH | |
| P888-8-E1 | Closed End Cap | 56.00 |
| P888-8-E2 | 2" (50.87mm) No-Hub End Outlet | 56.00 |
| P888-8-E3 | 3" (76.2mm) No-Hub End Outlet | 56.00 |
| P888-8-E4 | 4" (101.6mm) No-Hub End Outlet | 56.00 |
| P888-8-U2 | 2" (50.87mm) No-Hub Bottom Outlet | 56.00 |
| P888-8-U3 | 3" (76.2mm) No-Hub Bottom Outlet | 56.00 |
| P888-8-U4 | 4" (101.6mm) No-Hub Bottom Outlet | 56.00 |

*Regularly furnished unless otherwise specified.

†Indicates grate will be shipped unpainted. For an additional charge, Zurn will paint the grates. Please contact your customer service representative for pricing.

For additional product information, please visit www.zurn.ca

PERMA-TRENCH®

STAINLESS / SANI-FLO®

SLOT DRAIN / HI-CAP

ALUMINUM TRENCH

FIBERGLASS

FRAME AND GRATE SYSTEMS

OIL SEPARATORS

Z888-12,-18 HIGH-CAPACITY TRENCH DRAIN SYSTEM SLOTTED DRAINAGE SYSTEM



Standard Length: 80" (6.67')

ENGINEERING SPECIFICATION

Slot drain shall be 80" long, Z888-12 (14-1/4" deep and 12" wide) or Z888-18 (21" deep and 12" wide). Slot shall be 1-3/4" wide and have spacer bars at 5" intervals to keep sides of slot apart. Drain shall be made of Linear Low Density Polyethylene (LLDPE). Drain shall have tongue-and-groove interlocking ends and clips molded into the sides of the channel to accommodate vertical rebar for positioning and anchoring purposes. Drain shall be available with a choice of pedestrian, bicycle, FAA, and/or H-20 grates. End outlets, bottom outlets, and side outlets shall be available in 4", 6", 8", 12", 18", and 24" diameters along with Cleanout sections (Z889-12 and Z889-18). Slot drain shall be Flo-Thru model Z888-12 or Z888-18.

| PART NO. | 80" (2032MM) SECTIONS | EACH |
|----------------|--|----------|
| P888-12 | 12" (304.8mm) Channel Only | 1,711.00 |
| P888-18 | 18" (457.2mm) Channel Only | 2,029.00 |
| PART NO. | EACH | |
| P888-12-E1 | Closed End Cap | 414.00 |
| P888-12-E4 | 4" (101.6mm) No-Hub End Outlet | 1,115.00 |
| P888-12-E6 | 6" (152.4mm) No-Hub End Outlet | 1,180.00 |
| P888-12-E8 | 8" (203.2mm) No-Hub End Outlet | 1,247.00 |
| P888-12-E12 | 12" (204.8mm) No-Hub End Outlet | 1,147.00 |
| PART NO. | EACH | |
| P888-18-E1 | Closed End Cap | 495.00 |
| P888-18-E8 | 8" (203.2mm) No-Hub End Outlet | 795.00 |
| P888-18-E12 | 12" (204.8mm) No-Hub End Outlet | 952.00 |
| P888-18-E18 | 18" (457.2mm) No-Hub End Outlet | 2,047.00 |
| P888-18-E24 | 24" (609.6mm) No-Hub End Outlet | 2,047.00 |
| PART NO. | EACH | |
| P888-12/18-HD | Steel Frame with Slot | 1,594.00 |
| P888-12/18-HDG | Galvanized Ductile Iron Frame with Slot | 2,091.00 |
| P888-12/18-HPD | Heel-Proof Ductile Iron Frame and Grate | 1,594.00 |
| P888-12/18-HPG | Galvanized Heel-Proof Ductile Iron Frame and Grate | 2,091.00 |
| P888-12/18-PSF | Pre-Sloped Frame | 2,313.00 |
| PART NO. | EACH | |
| P888-T12/18 | Transition from -12 to -18 | 2,191.00 |
| P888-T18/12 | Transition from -18 to -12 | 2,238.00 |

Z889-12,-18 HIGH-CAPACITY CLEANOUT PORT



Standard Length: 24"

Standard Grate: H20 Ductile Frame/Grate

ENGINEERING SPECIFICATION

Slot drain Cleanout Port shall be 24" long, Z889-12 (14-1/4" deep and 12" wide) or Z889-18 (21" deep and 12" wide). The grate shall be 8" wide. Cleanout Port shall be made of Linear Low Density Polyethylene (LLDPE), tongue-and-groove interlocking ends, and clips molded into the sides of the channel to accommodate vertical rebar for positioning and anchoring purposes. Cleanout Port shall be available with a choice of pedestrian, bicycle, FAA, and/or H-20 grates. End outlets, bottom outlets, and side outlets shall be available in 4", 6", 8", 12", 18", and 24" diameters. Slot drain Cleanout Port shall be Flo-Thru model Z889-12 or Z889-18.

| PART NO. | 80" (2032MM) SECTIONS | EACH |
|----------------|--|----------|
| P889-12 | 12" (304.8mm) Channel Only | 1,285.00 |
| P889-18 | 18" (457.2mm) Channel Only | 2,037.00 |
| PART NO. | EACH | |
| P889-12-E1 | Closed End Cap | 414.00 |
| P889-12-E4 | 4" (101.6mm) No-Hub End Outlet | 1,115.00 |
| P889-12-E6 | 6" (152.4mm) No-Hub End Outlet | 1,180.00 |
| P889-12-E8 | 8" (203.2mm) No-Hub End Outlet | 1,247.00 |
| P889-12-E12 | 12" (204.8mm) No-Hub End Outlet | 1,147.00 |
| PART NO. | EACH | |
| P889-18-E1 | Closed End Cap | 495.00 |
| P889-18-E8 | 8" (203.2mm) No-Hub End Outlet | 795.00 |
| P889-18-E12 | 12" (204.8mm) No-Hub End Outlet | 952.00 |
| P889-18-E18 | 18" (457.2mm) No-Hub End Outlet | 2,047.00 |
| P889-18-E24 | 24" (609.6mm) No-Hub End Outlet | 2,047.00 |
| PART NO. | EACH | |
| P889-12/18-HD | Steel Frame with Slot | 1,594.00 |
| P889-12/18-HDG | Galvanized Ductile Iron Frame with Slot | 2,091.00 |
| P889-12/18-HPG | Galvanized Heel-Proof Ductile Iron Frame and Grate | 2,091.00 |
| P889-12/18-HPS | Stainless Steel Cast Heel-Proof Frame and Grate | 1,594.00 |
| P889-12/18-PSF | Pre-Sloped Frame | 2,313.00 |
| PART NO. | EACH | |
| P889-T12/18 | Transition from -12 to -18 | 2,191.00 |
| P889-T18/12 | Transition from -18 to -12 | 2,238.00 |

ZA880-156 EXTRUDED ALUMINUM TRENCH DRAIN SYSTEM



Standard Length: 8'
Standard Grate Included: BZ

ENGINEERING SPECIFICATION

Zurn ZA880-156 Extruded Aluminum Trench Drain System. 1.63" interior width x 4" overall height x 8' long. Complete with 1.5" wide flanges on side. Material to be Aluminum Alloy T-6063. Cast bronze decorative grate conforms to ASTM B584 Copper Alloy No. 844. Trench is anodized after extrusion to match grate color.

| PREFIX | DESCRIPTION | NO. OF GRATES PER CHANNEL | PER EACH | PER FOOT |
|------------------------------|--|---------------------------|-----------------|-----------------|
| ZA* | 8' Extruded Aluminum Trench Drain System | 4 | 4,528.00 | 566.00 |
| OUTLET ADAPTERS | | | ADD/EACH | |
| PA880-156-E1 | Closed End Cap | | | 381.00 |
| PA880-156-E1.5 | 1-1/2" No-Hub End Outlet | | | 337.00 |
| PA880-156-U1.5 | 1-1/2" No-Hub Bottom Outlet | | | 337.00 |
| GRATE OPTIONS | | | ADD/EACH | ADD/FOOT |
| PA880-156-AWG | Aluminum Wire Grate - Class A | | 3,312.00 | 414.00 |
| PA880-156-AZ | Aluminum Decorative Grate - Class A | | 3,032.00 | 379.00 |
| PA880-156-BZ | Bronze Decorative Grate - Class A | | 3,032.00 | 379.00 |
| PA880-156-NBZ | Nickel Bronze Decorative Grate - Class A | | 3,312.00 | 414.00 |
| MISCELLANEOUS OPTIONS | | | ADD/EACH | ADD/FOOT |
| PA880-K | Anchor Flange | | 336.00 | 42.00 |
| PA880-KC | Clamp Collar and Pan (Includes -K) | | 8,856.00 | 1,107.00 |
| PA880-LF | Leveling Feet | | 3,544.00 | 443.00 |
| SERVICE CHARGES | | | ADD/EACH | |
| Fabrication | - 45°; 90°; Tee Fabs | | | 933.00 |
| | - Cross Fabs | | | 1,872.00 |

ZA880-300A EXTRUDED ALUMINUM TRENCH DRAIN SYSTEM (PRICING WITHOUT GRATE)

ENGINEERING SPECIFICATION

Zurn ZA880-300A Extruded Aluminum Trench Drain System. 3.00" interior width x 6" overall height x 8' long. Complete with 2" wide flanges on both sides. Material to be Aluminum Alloy T-6063. Available with aluminum, bronze, ductile iron, and nickel bronze grates. Trench is anodized after extrusion to match grate color.

ZA880-300B EXTRUDED ALUMINUM TRENCH DRAIN SYSTEM (PRICING WITHOUT GRATE)

ENGINEERING SPECIFICATION

Zurn ZA880-300B Extruded Aluminum Trench Drain System. 3.00" interior width x 6" overall height x 8' long. Complete with 1.5" wide flanges on both sides. Material to be Aluminum Alloy T-6063. Available with aluminum, bronze, ductile iron, and nickel bronze grates. Trench is anodized after extrusion to match grate color.

| PREFIX | DESCRIPTION | NO. OF GRATES PER CHANNEL | CHANNEL NUMBER | PER EACH | PER FOOT |
|-----------------------|--|---------------------------|----------------|----------|----------|
| ZA | 8' Extruded Aluminum Trench Drain System | 4 | 880-300A | 7,496.00 | 937.00 |
| | | | 880-300B | 7,496.00 | 937.00 |
| | | | 880-340 | 7,496.00 | 937.00 |
| OUTLET ADAPTERS | | | | | ADD/EACH |
| PA880-300/340-E1 | Closed End Outlet | | | | 443.00 |
| PA880-300/340-U2 | 2" No-Hub Bottom Outlet Channel | | | | 493.00 |
| GRATE OPTIONS | | | | ADD/EACH | ADD/FOOT |
| PA880-300/340-AWG | Aluminum Wire Grate - Class A | | | 4,016.00 | 502.00 |
| PA880-300/340-AZ | Aluminum Decorative Grate - Class A | | | 1,120.00 | 140.00 |
| PA880-300/340-BZ | Bronze Decorative Grate - Class A | | | 5,144.00 | 643.00 |
| PA880-300/340-DOG | Ductile Decorative Grate - Class A | | | 1,336.00 | 167.00 |
| PA880-300/340-NBZ | Nickel Bronze Decorative Grate - Class A | | | 7,144.00 | 893.00 |
| MISCELLANEOUS OPTIONS | | | | ADD/EACH | ADD/FOOT |
| PA880--K | Anchor Flange | | | 336.00 | 42.00 |
| PA880-KC | Clamp Collar and Pan (Includes -K) | | | 8,856.00 | 1,107.00 |
| PA880-LF | Leveling Feet (ZA880-340 Only) | | | 472.00 | 59.00 |
| SERVICE CHARGES | | | | ADD/EACH | |
| Fabrication | - 45°; 90°; Tee Fabs | | | | 933.00 |
| | - Cross Fabs | | | | 1,872.00 |

ZA880-340 EXTRUDED ALUMINUM TRENCH DRAIN SYSTEM (PRICING WITHOUT GRATE)

ENGINEERING SPECIFICATION

Zurn ZA880-340 Extruded Aluminum Trench Drain System. 3.00" interior width x 4" overall height x 8' long. Material to be Aluminum Alloy T-6063. Available with aluminum, bronze, and nickel bronze grates. Trench is anodized after extrusion to match grate color.

*Regularly furnished unless otherwise specified.

†Indicates grate will be shipped unpainted. For an additional charge, Zurn will paint the grates. Please contact your customer service representative for pricing.

For additional product information, please visit www.zurn.ca

ZF806 6" WIDE TRENCH DRAIN SYSTEM



Standard Length: 10'
Standard Grate Included: DGC

ENGINEERING SPECIFICATION

Channels shall be 10' long, 6" wide, and have a 4" wide throat. Modular channel sections shall be made of Fiber Reinforced Polyester (FRP) fiberglass, have interlocking ends, and radiused bottom. Channel shall be provided with no slope or with a .75% built-in slope. Channels shall be available with inverts ranging from 4.75" to 12.85". Choices of class A thru F grates shall be available with H-20 and/or FAA load ratings and/or ADA compliance with mechanical lockdown devices. A heavy-duty steel frame shall be provided to distribute weight between the grates and the FRP fiberglass channel. End caps and catch basins shall be available to complement the channels and grates. End outlets, bottom outlets, and side outlets shall be available in 2", 3", 4", and 6" diameters. Trench drain shall be Flo-Thru model ZF806.

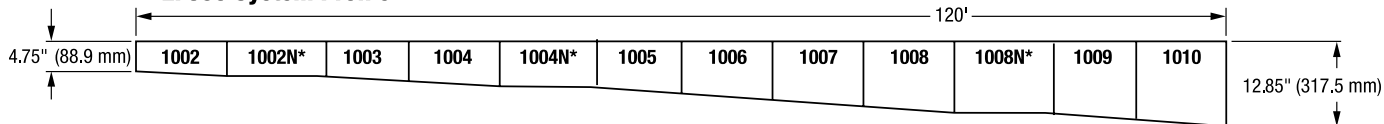
NOTE

White acid resistant coating also available for frame and grate

| Trench Number | Shallow Invert | | Deep Invert | | Flow Rate | | |
|---------------|----------------|-----|-------------|-----|-----------|-----|-----|
| | In. | mm | In. | mm | cfs | gpm | lps |
| 1002 | 4.75 | 121 | 5.65 | 144 | 0.326 | 146 | 9 |
| 1002N | 5.65 | 144 | 5.65 | 144 | - | - | - |
| 1003 | 5.65 | 144 | 6.55 | 166 | 0.427 | 192 | 12 |
| 1004 | 6.55 | 166 | 7.45 | 189 | 0.53 | 238 | 15 |
| 1004N | 7.45 | 189 | 7.45 | 189 | - | - | - |
| 1005 | 7.45 | 189 | 8.35 | 212 | 0.635 | 285 | 18 |
| 1006 | 8.35 | 212 | 9.25 | 235 | 0.74 | 332 | 21 |
| 1007 | 9.25 | 235 | 10.15 | 258 | 0.845 | 379 | 24 |
| 1008 | 10.15 | 258 | 11.05 | 281 | 0.951 | 427 | 27 |
| 1008N | 11.05 | 281 | 11.05 | 281 | - | - | - |
| 1009 | 11.05 | 281 | 11.95 | 304 | 1.058 | 475 | 30 |
| 1010 | 11.95 | 304 | 12.85 | 326 | 1.164 | 523 | 33 |

| SERVICE CHARGES | | ADD/EACH | |
|-----------------|---|----------|----------|
| Fabrication | - 45°; 90°; Tee; Side Outlet Fabs | 454.00 | |
| | - Cross Fabs | 901.00 | |
| Cutting | Cutting for Each Cut Only | 164.00 | |
| PART NO. | 10' (3048MM) SLOPED & NEUTRAL SECTIONS | EACH | PER FOOT |
| 1001-1013 | Channel - Galvanized Welded Frames & Strap Assemblies* | 2,780.00 | 278.00 |
| SS-1001-1013 | Channel - Stainless Steel Welded Frames & Strap Assemblies* | 5,180.00 | 518.00 |
| | *Vinyl Add On | N/A | 63.00 |
| PART NO. | CAST GRATES - 20" (508MM) | EACH | PER FOOT |
| P6-BZ | Bronze Decorative Grate - Class A | 1,127.00 | 676.00 |
| P6-DC | Ductile Iron Solid Cover - Class C | 145.00 | 87.00 |
| P6-DGC | Ductile Iron Slotted Grate - Class C | 144.00 | 86.00 |
| P6-DGE | Ductile Iron Slotted - Class E | 179.00 | 107.00 |
| P6-DBG | Ductile Iron Slotted Grate - Class C | 149.00 | 89.00 |
| P6-GDE | Galvanized Ductile Grate - Class E | 179.00 | 107.00 |
| P6-BG | Galvanized Ductile Iron Cast Bar Grate - Class C | 197.00 | 118.00 |
| P6-HPD | Heel Proof Longitudinal Ductile ADA Grate - Class B | 127.00 | 76.00 |
| P6-LD | Longitudinal Ductile Grate - Class B | 169.00 | 101.00 |
| P6-HPP | Heel-Proof Polyethylene ADA Grate - Class A (Light Duty) | 75.00 | 45.00 |
| P6-GG | Fiberglass Grate - Class A | 605.00 | 363.00 |
| PART NO. | FABRICATED GRATES - 40" (1016MM) | EACH | PER FOOT |
| P6-FG | Fabricated Galvanized Steel Slotted Grate - Class A | 194.00 | 58.00 |
| P6-PG | Galvanized Perforated Steel ADA Grate - Class A | 174.00 | 52.00 |
| P6-RPG | Reinforced Galvanized Perforated Grate - Class B | 330.00 | 99.00 |
| P6-GG | Fiberglass Grate - Class A | 644.00 | 193.00 |
| PART NO. | STAINLESS GRATES - 40" (1016MM) | EACH | PER FOOT |
| P6-FS | Fabricated Stainless Steel Slotted Grate - Class A | 524.00 | 157.00 |
| P6-PS | Stainless Steel Perforated Grate - Class A | 474.00 | 142.00 |
| P6-RPSC | Reinforced Stainless Steel Perforated ADA Grate - Class C | 1,097.00 | 329.00 |
| PART NO. | STAINLESS GRATES - 20" (508MM) | EACH | PER FOOT |
| P6-SBG | Stainless Steel Bar Grate - Class E | 944.00 | 566.00 |
| P6-SSBG | Fabricated Stainless Steel Bar Grate | 1,367.00 | 820.00 |
| P6-SSBG-HP | Heel-Proof Stainless Steel Bar Grate | POA | POA |

ZF806 System Profile



ZF806 6" WIDE TRENCH DRAIN SYSTEM

| PART NO. | | ADD/EACH | |
|-----------|--|----------|----------|
| | | Z | ZV |
| P806-E1 | Closed End Cap | 56.00 | 128.00 |
| P806-E2 | 2" (50.8mm) No Hub End Outlet | 56.00 | 128.00 |
| P806-E3 | 3" (76.2mm) No Hub End Outlet | 56.00 | 128.00 |
| P806-E4 | 4" (101.6mm) No Hub End Outlet | 56.00 | 128.00 |
| P806-U2 | 2" (50.8mm) No Hub Bottom Outlet | 56.00 | 128.00 |
| P806-U3 | 3" (76.2mm) No Hub Bottom Outlet | 56.00 | 128.00 |
| P806-U4 | 4" (101.6mm) No Hub Bottom Outlet | 56.00 | 128.00 |
| P806-DB | Dome Bottom Strainer | 109.00 | N/A |
| P806-JC | Joint Connector | 126.00 | N/A |
| P806-FEC | Frame End Cap (Galvanized) | 36.00 | N/A |
| PS806-FEC | Frame End Cap (Stainless) | 98.00 | N/A |
| P806-SW | 8.1" (205.74mm) High Sidewall Extension Adapter (Per Pair) | 815.00 | 1,782.00 |

PERMA-TRENCH®

STAINLESS / SANI-FLO®

SLOT DRAIN / HI-CAP

ALUMINUM TRENCH

FIBERGLASS

FRAME AND GRATE SYSTEMS

OIL SEPARATORS

*Regularly furnished unless otherwise specified.

†Indicates grate will be shipped unpainted. For an additional charge, Zurn will paint the grates.
Please contact your customer service representative for pricing.

For additional product information, please visit www.zurn.ca

ZF812 12" WIDE TRENCH DRAIN SYSTEM



Standard Length: 10'
Standard Grate Included: DGC

ENGINEERING SPECIFICATION

Channels shall be 10' long, 12" wide, and have a 9-1/4" wide throat. Modular channel sections shall be made of Fiber Reinforced Polyester (FRP) fiberglass, have interlocking ends, and radiused bottom. Channel shall be provided either flat (neutral) or with a 1.04% built-in slope. Channels shall be available with inverts ranging from 7.93" to 19.18". Choices of class A thru F grates shall be available with H-20 and/or FAA load ratings and/or ADA compliance with mechanical lockdown devices. A heavy-duty steel frame shall be provided to distribute weight between the grates and the FRP fiberglass channel. End caps and catch basins shall be available to complement the channels and grates. End outlets, bottom outlets, and side outlets shall be available in 4", 6", and 8" diameters. Trench drain shall be Flo-Thru model ZF812.

NOTE

White acid resistant coating also available for frame and grate

| Trench Number | Shallow Invert | | Deep Invert | | Flow Rate | | |
|---------------|----------------|-----|-------------|-----|-----------|------|-----|
| | In. | mm | In. | mm | cfs | gpm | lps |
| 2002 | 7.93 | 201 | 9.18 | 233 | 2.088 | 937 | 59 |
| 2002N | 9.18 | 233 | 9.18 | 233 | - | - | - |
| 2003 | 9.18 | 233 | 10.43 | 265 | 2.730 | 1225 | 77 |
| 2004 | 10.43 | 265 | 11.68 | 297 | 3.388 | 1521 | 96 |
| 2004N | 11.68 | 297 | 11.68 | 297 | - | - | - |
| 2005 | 11.68 | 297 | 12.93 | 328 | 4.058 | 1821 | 115 |
| 2006 | 12.93 | 328 | 14.18 | 360 | 4.736 | 2125 | 134 |
| 2007 | 14.18 | 360 | 15.43 | 392 | 5.42 | 2432 | 153 |
| 2008 | 15.43 | 392 | 16.68 | 424 | 6.109 | 2742 | 173 |
| 2008N | 16.68 | 424 | 16.68 | 424 | - | - | - |
| 2009 | 16.68 | 424 | 17.93 | 455 | 6.802 | 3053 | 193 |
| 2010 | 17.93 | 455 | 19.18 | 487 | 7.498 | 3365 | 212 |

| SERVICE CHARGES | | ADD/EACH | |
|-----------------|--|----------|----------|
| Fabrication | - 45°; 90°; Tee; Side Outlet Fabs | 454.00 | |
| | - Cross Fabs | 901.00 | |
| Cutting | Cutting for Each Cut Only | 164.00 | |
| PART NO. | 10' (3048MM) SLOPED & NEUTRAL SECTIONS | EACH | PER FOOT |
| 2001-2013 | Channel - Galvanized Welded Frames & Strap Assemblies* | 5,870.00 | 587.00 |
| SS-2001-2013 | Channel - Stainless Steel Welded Frames & Strap Assemblies* | 8,680.00 | 868.00 |
| | *Vinyl Add On | N/A | 124.00 |
| PART NO. | CAST GRATES - 24" (609.6MM) | EACH | PER FOOT |
| P12-DC | Ductile Iron Solid Cover - Class C | 608.00 | 304.00 |
| P12-DGC | Ductile Iron Slotted Grate - Class C | 474.00 | 237.00 |
| P12-DGE | Ductile Iron Slotted - Class E | 490.00 | 245.00 |
| P12-DBF | Ductile Iron Slotted Grate - Class F | 718.00 | 359.00 |
| P12-GDC | Galvanized Ductile Grate - Class C | 604.00 | 302.00 |
| P12-GDE | Galvanized Ductile Grate - Class E | 700.00 | 350.00 |
| P12-GDF | Galvanized Ductile Grate - Class F | 874.00 | 437.00 |
| P12-GHPD | Galvanized Heel Proof Longitudinal Ductile ADA Grate - Class E | 686.00 | 343.00 |
| P12-HPD | Heel Proof Longitudinal Ductile ADA Grate - Class B | 520.00 | 260.00 |
| PART NO. | FABRICATED GRATES - 24" (609.6MM) | EACH | PER FOOT |
| P12-BG | Galvanized Ductile Iron Cast Bar Grate - Class D | 628.00 | 314.00 |
| P12-FG | Fabricated Galvanized Steel Slotted Grate - Class A | 464.00 | 232.00 |
| P12-RFG | Reinforced Galvanized Steel Slotted Grate - Class B | 1,202.00 | 601.00 |
| P12-PG | Galvanized Perforated Steel ADA Grate - Class A | 466.00 | 233.00 |
| P12-RPG | Reinforced Galvanized Perforated Grate - Class B | 1,156.00 | 578.00 |
| P12-GG | Fiberglass Grate - Class A | 726.00 | 363.00 |
| PART NO. | STAINLESS GRATES - 24" (609.6MM) | EACH | PER FOOT |
| P12-FS | Fabricated Stainless Steel Slotted Grate | 1,116.00 | 558.00 |
| P12-RFSC | Reinforced Galvanized Stainless Steel Slotted Grate - Class C | 2,064.00 | 1,032.00 |
| P12-PS | Stainless Steel Perforated Grate | 1,498.00 | 749.00 |
| P12-RPSC | Reinforced Stainless Steel Perforated ADA Grate - Class C | 2,214.00 | 1,107.00 |
| P12-SBG-L | Stainless Steel Bar Grate - Class C | 3,434.00 | 1,717.00 |
| ADD/EACH | | | |
| PART NO. | | Z | ZV |
| P812-E1 | Closed End Cap | 109.00 | 383.00 |
| P812-E4 | 4" (101.6mm) No Hub End Outlet | 109.00 | 383.00 |
| P812-E6 | 6" (154.2mm) No Hub End Outlet | 109.00 | 383.00 |
| P812-E8 | 8" (203.2mm) No Hub End Outlet | 301.00 | 383.00 |
| P812-U4 | 4" (101.6mm) No Hub Bottom Outlet | 163.00 | 383.00 |
| P812-U6 | 6" (154.2mm) No Hub Bottom Outlet | 163.00 | 383.00 |
| P812-U8 | 8" (203.2mm) No Hub Bottom Outlet | 176.00 | 383.00 |
| P812-JC | Joint Connector | 399.00 | N/A |
| P812-FEC | Frame End Cap (Galvanized) | 194.00 | N/A |
| PS812-FEC | Frame End Cap (Stainless) | 119.00 | N/A |
| P812-DB | Dome Bottom Strainer | 225.00 | N/A |

ZF817 CATCH BASIN



Standard Grate Included: DGC

ENGINEERING SPECIFICATION

Catch Basins shall be 6" wide x 20" long x 20" deep, 12" wide x 24" long x 24" deep, or 24" wide x 24" long x 24" deep and shall be made of Fiber Reinforced Polyester (FRP) fiberglass. Choices of class A thru F grates shall be available with H-20, FAA, and/or ADA compliance. Outlets in 2", 3", 4", 6", and 8" diameters shall be available. Catch Basin shall be Flo-Thru model ZF817.

NOTE

1. White acid resistant coating also available for frame and grate
Please contact customer care for mechanical lockdown availability and pricing.
Outlets also available in 10" and 12" – POA.

| PART NO. | | EACH |
|------------|---------------|----------|
| Z817-6x20 | Basin Only* | 1,049.00 |
| | *Vinyl Add On | 547.00 |
| Z817-12x24 | Basin Only* | 1,176.00 |
| | *Vinyl Add On | 894.00 |
| Z817-24x24 | Basin Only* | 1,305.00 |
| | *Vinyl Add On | 894.00 |

| PART NO. | 817 - FRAMES ONLY | EACH |
|-----------------|--|----------|
| PF817-HDF-12x24 | 12" (304.8mm) x 24" (609.6mm) Black Frame | 465.00 |
| PF817-HDF-24x24 | 24" (609.6mm) x 24" (609.6mm) Black Frame | 1,030.00 |
| PF817-HDG-12x24 | 12" (304.8mm) x 24" (609.6mm) Galvanized Frame | 617.00 |
| PF817-HDG-24x24 | 24" (609.6mm) x 24" (609.6mm) Galvanized Frame | 1,340.00 |
| PF817-SF-12x24 | 12" (304.8mm) x 24" (609.6mm) Stainless Frame | 3,954.00 |
| PF817-SF-24x24 | 24" (609.6mm) x 24" (609.6mm) Stainless Frame | 5,087.00 |

Note: 6" (152.4mm) x 20" (508mm) Frames in a trench run are at no charge. A stand alone basin frame is POA

TO ADD GRATES TO OBTAIN A TOTAL BASIN PRICE

| | |
|---|--|
| 1 | 6" (152.4mm) x 20" (508mm) system list price, add the list price for (1) of the corresponding 806 grates to the basin price. |
| 2 | 12" (304.8mm) x 24" (609.6mm) system list price, add the list price for (1) of the corresponding 812 grate to the basin price. |
| 3 | 24" (609.6mm) x 24" (609.6mm) add (1) of the following 24" (609.6mm) x 24" (609.6mm) grates |

| PART NO. | GRATES 24" (609.6MM) X 24" (609.6MM) | EACH |
|----------------|--|----------|
| P817-BG-24X24 | Galvanized Ductile Iron Bar Grate - Class C | 1,242.00 |
| P817-DC-24X24 | Ductile Iron Solid Cover - Class C | 6,886.00 |
| P817-DGC-24X24 | Ductile Iron Slotted Grate - Class C | 1,129.00 |
| P817-DGF-24X24 | Ductile Iron Slotted Grate - Class F | 1,471.00 |
| P817-FG-24X24 | Galvanized Steel Slotted Grate - Class A | 3,580.00 |
| P817-FS-24X24 | Fabricated Stainless Steel Slotted Grate - Class A | 3,475.00 |
| P817-GDF-24X24 | Galvanized Ductile Grate - Class F | 1,882.00 |
| P817-GG-24X24 | Fiberglass Grate - Class A | 1,340.00 |
| P817-SBG-24X24 | Stainless Steel Bar Grate - Class E | 4,842.00 |

| PART NO. | | EACH |
|------------|---|----------|
| P817-E4-U4 | 4" (101.6mm) Outlet | 99.00 |
| P817-E6-U6 | 6" (154.2mm) Outlet | 101.00 |
| P817-E8-U8 | 8" (203.2mm) Outlet | 279.00 |
| P817-IA6 | 6" (152.4mm) Inlet Adapter | 149.00 |
| P817-IA12 | 12" (304.8mm) Inlet Adapter | 318.00 |
| P817-Y6 | 6" (154.2mm) Sediment Bucket | 347.00 |
| P817-Y12 | 12" (304.8mm) Sediment Bucket | 539.00 |
| P817-Y24 | 24" (609.6mm) Sediment Bucket | 682.00 |
| PS817-Y6 | Stainless Steel 6" (154.2mm) Sediment Bucket | 627.00 |
| PS817-Y12 | Stainless Steel 12" (304.8mm) Sediment Bucket | 1,048.00 |
| PS817-Y24 | Stainless Steel 24" (609.6mm) Sediment Bucket | 1,769.00 |

*Regularly furnished unless otherwise specified.

†Indicates grate will be shipped unpainted. For an additional charge, Zurn will paint the grates.
Please contact your customer service representative for pricing.

For additional product information, please visit www.zurn.ca

Z706 6" WIDE FRAME AND GRATE SYSTEM



Standard Length: 10'
Standard Grate Included: DGC

ENGINEERING SPECIFICATION

ZURN Z706 6" Wide Frame and Grate System. Ten-foot long Dura-Coated 1" x 1" x 1/4" welded structural components with combination anchor tabs/leveling devices and anchor studs at appropriate locations. Complete with Ductile Iron Grate - Class C with lockdown.

NOTES

White acid resistant coating also available for frame and grate

| PART NO. | 10' (3048MM) WELDED FRAMES | EACH | PER FOOT |
|--|---|----------|----------|
| Z706 | Frame Strap & Stud Assembly | 760.00 | 76.00 |
| Z706-GFA | Galvanized Frame Strap & Stud Assembly | 1,130.00 | 113.00 |
| ZS706-SFA | Stainless Steel Frame Strap & Stud Assembly | 3,480.00 | 348.00 |
| GRATES | | | |
| To obtain the grate price add any Z886/Z806 grates | | | |

Z712 12" WIDE FRAME AND GRATE SYSTEM



Standard Length: 10'
Standard Grate Included: DGC

ENGINEERING SPECIFICATION

Zurn Z712 12" Wide Frame and Grate System. Ten-foot long Dura-Coated 1-3/4" x 1-3/4" x 1/4" angles with anchor studs at appropriate locations. Complete with Ductile Iron Grate - Class C with lockdown.

NOTES

White acid resistant coating also available for frame and grate

| PART NO. | 10' (3048MM) WELDED FRAMES | EACH | PER FOOT |
|--|---|----------|----------|
| Z712 | Frame Strap & Stud Assembly | 1,480.00 | 148.00 |
| Z712-GFA | Galvanized Frame Strap & Stud Assembly | 2,210.00 | 221.00 |
| ZS712-SFA | Stainless Steel Frame Strap & Stud Assembly | 4,950.00 | 495.00 |
| GRATES | | | |
| To obtain the grate price add any Z882/Z812 grates | | | |

Z717 17" WIDE FRAME AND GRATE SYSTEM



Standard Length: 80" (6.67')
Standard Grate Included: DGC†

ENGINEERING SPECIFICATION

Zurn Z717 17" Wide Frame and Grate System. 2" x 2-1/2" x 1/4" angle, 80" long, carbon steel frame assembly. Anchor studs and combination anchor tabs/leveling devices at appropriate locations for embedding into surrounding concrete. Complete with Class C ductile iron slotted grates (-DGC).

NOTES

White acid resistant coating also available for frame and grate

| PART NO. | 80" (2032MM) WELDED FRAMES | EACH | PER FOOT |
|--|---|----------|----------|
| Z717 | Frame Strap & Stud Assembly | 1,827.00 | 274.00 |
| Z717-GFA | Galvanized Frame Strap & Stud Assembly | 2,274.00 | 341.00 |
| ZS717-SFA | Stainless Steel Frame Strap & Stud Assembly | 3,867.00 | 580.00 |
| GRATES | | | |
| To obtain the grate price add any Z874-12 grates | | | |

Z723 23" WIDE FRAME AND GRATE SYSTEM



Standard Length: 80" (6.67')
Standard Grate Included: DGC†

ENGINEERING SPECIFICATION

Frame and Grate System shall be 80 [2032] long, 23 [584] wide reveal and have a 18 [457] clear opening. Shall mechanically lock into the concrete surround every 10 [254]. Shall be provided with the standard DGC grate, Zurn 23 [584] wide reveal Ductile Iron Slotted Grate, which locks down to the frame with 4 bolt anchors per grate. Ductile Iron conforms to ASTM specification A536-84, Grade 80- 55- 06. Ductile Iron grate is rated class C per the DIN EN1433 top load classifications. Supplied in 20[508] nominal lengths with 1.03 [26] wide slots, and 1.75[44] bearing depth. Grate has an open area of 112 sq. in. pr ft. [237078 sq. mm per meter]. The .25 [6] thick Carbon Steel Frame Assembly conforms to ASTM specification A36 with 10 - 4 [102] long concrete anchors per 80 [2032]. The frame is supplied with a powder coated finish. All welds must be performed by a certified welder per ASTM standard AWS D1.1. Frames shall be produced in the USA.

NOTES

White acid resistant coating also available for frame and grate

| PART NO. | 80" (2032MM) WELDED FRAMES | EACH | PER FOOT |
|--|---|----------|----------|
| Z723 | Frame Strap & Stud Assembly | 1,834.00 | 275.00 |
| Z723-GFA | Galvanized Frame Strap & Stud Assembly | 2,314.00 | 347.00 |
| ZS723-SFA | Stainless Steel Frame Strap & Stud Assembly | 6,480.00 | 972.00 |
| GRATES | | | |
| To obtain the grate price add any Z874-18 grates | | | |

Z726 26" WIDE FRAME AND GRATE SYSTEM



Standard Length: 80" (6.67')
Standard Grate Included: DGC†

ENGINEERING SPECIFICATION

Zurn Z726 26" Wide Frame and Grate System. 2" x 2-1/2" x 1/4" angle, 80" long, carbon steel frame assembly. Anchor studs and combination anchor tabs/leveling devices at appropriate locations for embedding into surrounding concrete. Complete with Class C ductile iron slotted grates (-DGC).

NOTES

White acid resistant coating also available for frame and grate

| PART NO. | 80" (2032MM) WELDED FRAMES | EACH | PER FOOT |
|--|---|----------|----------|
| Z726 | Frame Strap & Stud Assembly | 1,900.00 | 285.00 |
| Z726-GFA | Galvanized Frame Strap & Stud Assembly | 2,367.00 | 355.00 |
| ZS726-SFA | Stainless Steel Frame Strap & Stud Assembly | 6,820.00 | 1,023.00 |
| GRATES | | | |
| To obtain the grate price add any Z874-21 grates | | | |

*Regularly furnished unless otherwise specified.

†Indicates grate will be shipped unpainted. For an additional charge, Zurn will paint the grates.
Please contact your customer service representative for pricing.

Z885 POLYETHYLENE OIL SEPARATOR



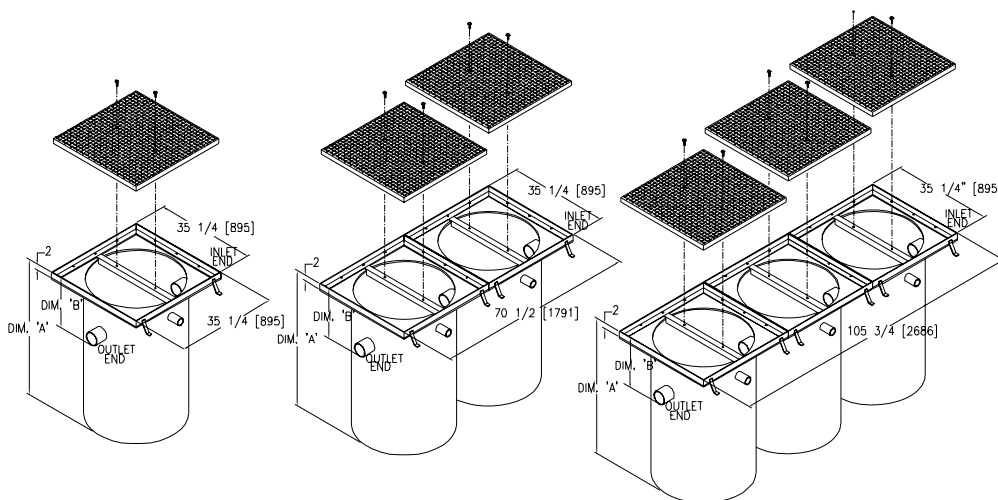
ENGINEERING SPECIFICATION

Zurn Z885 Polyethylene Oil Separator. 1/4" thick polyethylene body complete with heavy-duty Dura-Coated steel frame and 1/4" thick steel diamond plate covers with medium-duty top loading classification. Four-inch diameter No-Hub inlet/outlet with 2" diameter No-Hub vent connections. Dimensions shown nominally for reference. Top of grate to center of outlet distance is 8" unless otherwise specified.

NOTES

White acid resistant coating also available for frame and grate

| PREFIX | DESCRIPTION | MODEL NUMBER | CAPACITY GALLONS | DEPTH | LIST PRICE |
|--------|--|--------------|------------------|-------|------------|
| Z* | Polyethylene Basin with Medium-Duty Frame and Reinforced Steel Cover | Single Basin | | | |
| | | Z885-1-30 | 70 | 30 | 13,976.00 |
| | | Z885-1-36 | 100 | 36 | 14,246.00 |
| | | Z885-1-48 | 130 | 48 | 14,875.00 |
| | | Z885-1-60 | 150 | 60 | 15,091.00 |
| | | Double Basin | | | |
| | | Z885-2-30 | 140 | 30 | 23,676.00 |
| | | Z885-2-36 | 200 | 36 | 25,112.00 |
| | | Z885-2-48 | 260 | 48 | 25,870.00 |
| | | Z885-2-60 | 300 | 60 | 28,277.00 |
| | | Triple Basin | | | |
| | | Z885-3-30 | 210 | 30 | 34,212.00 |
| | | Z885-3-36 | 300 | 36 | 28,277.00 |
| | | Z885-3-48 | 390 | 48 | 30,823.00 |
| | | Z885-3-60 | 450 | 60 | 48,125.00 |



| A Depth | B = Invert Dimensions | | | | | | |
|--------------------|-----------------------|-----|-----|-----|-----|-----|-----|
| | 8" | 10" | 12" | 14" | 16" | 18" | 20" |
| | Gallons | | | | | | |
| Single Basin Model | | | | | | | |
| 30" | 70 | 65 | N/A | N/A | N/A | N/A | N/A |
| 36" | 100 | 93 | 84 | 78 | 72 | N/A | N/A |
| 48" | 130 | 124 | 118 | 112 | 106 | 100 | 94 |
| 60" | 150 | 143 | 138 | 132 | 128 | 122 | 116 |
| Double Basin Model | | | | | | | |
| 30" | 140 | 130 | N/A | N/A | N/A | N/A | N/A |
| 36" | 200 | 186 | 168 | 156 | 144 | N/A | N/A |
| 48" | 261 | 248 | 236 | 224 | 212 | 200 | 187 |
| 60" | 300 | 286 | 276 | 264 | 256 | 244 | 232 |
| Triple Basin Model | | | | | | | |
| 30" | 210 | 195 | N/A | N/A | N/A | N/A | N/A |
| 36" | 300 | 279 | 252 | 234 | 216 | N/A | N/A |
| 48" | 391 | 373 | 354 | 336 | 318 | 299 | 281 |
| 60" | 450 | 429 | 414 | 396 | 384 | 366 | 348 |

ALPHANUMERIC INDEX

| | | | | | |
|---|-----------|--|-----------|--|-----------|
| ALPHANUMERIC INDEX | 31 | Z882 12" WIDE TRENCH DRAIN SYSTEM | 4 | Z894 24" WIDE TRENCH DRAIN SYSTEM | 16 |
| Z706 6" WIDE FRAME AND GRATE SYSTEM | 28 | Z883 6" WIDE SHALLOW TRENCH DRAIN SYSTEM | 10 | Z895 12" STAINLESS STEEL TRENCH DRAIN SYSTEM | 14 |
| Z712 12" WIDE FRAME AND GRATE SYSTEM | 28 | Z884 4-3/4" WIDE SHALLOW DRAIN SYSTEM | 9 | Z897 STAINLESS STEEL CATCH BASIN | 19 |
| Z717 17" WIDE FRAME AND GRATE SYSTEM | 28 | Z885 POLYETHYLENE OIL SEPARATOR | 30 | Z898 18" WIDE TRENCH DRAIN SYSTEM | 15 |
| Z723 23" WIDE FRAME AND GRATE SYSTEM | 29 | Z886 6" WIDE TRENCH DRAIN SYSTEM | 2 | Z899-100 ELEVATOR TRENCH DRAIN SYSTEM | 17 |
| Z726 26" WIDE FRAME AND GRATE SYSTEM | 29 | Z887 CATCH BASIN | 11 | ZA880-156 EXTRUDED ALUMINUM TRENCH DRAIN SYSTEM | 23 |
| Z874-12 TRENCH DRAIN SYSTEM | 5 | Z888-4 SLOTTED DRAINAGE SYSTEM | 21 | ZA880-300A EXTRUDED ALUMINUM TRENCH DRAIN SYSTEM (PRICING WITHOUT GRATE) | 23 |
| Z874-18 TRENCH DRAIN SYSTEM | 6 | Z888-6 SLOTTED DRAINAGE SYSTEM | 21 | ZA880-300B EXTRUDED ALUMINUM TRENCH DRAIN SYSTEM (PRICING WITHOUT GRATE) | 23 |
| Z874-21 TRENCH DRAIN SYSTEM | 7 | Z888-8 SLOTTED DRAINAGE SYSTEM | 21 | ZA880-340 EXTRUDED ALUMINUM TRENCH DRAIN SYSTEM (PRICING WITHOUT GRATE) | 23 |
| Z874-U-XX-HD HEAVY-DUTY UTILITY TRENCH WITH STEEL FRAME AND DUCTILE IRON SOLID COVER | 8 | Z888-12, -18 HIGH-CAPACITY TRENCH DRAIN SYSTEM SLOTTED DRAINAGE SYSTEM | 22 | ZF806 6" WIDE TRENCH DRAIN SYSTEM | 24 |
| Z874-U-XX-LDRA LIGHT-DUTY UTILITY TRENCH WITH ALUMINUM FRAME, CLAMP AND SOLID COVER | 8 | Z889-12, -18 HIGH-CAPACITY CLEANOUT PORT | 22 | ZF812 12" WIDE TRENCH DRAIN SYSTEM | 26 |
| Z874-U-XX-LDRS LIGHT-DUTY UTILITY TRENCH WITH ALUMINUM FRAME AND CLAMP WITH SOLID STEEL COVER | 8 | Z890 6" STAINLESS STEEL TRENCH DRAIN SYSTEM | 13 | ZF817 CATCH BASIN | 27 |
| Z880 2-1/2" WIDE TRENCH DRAIN SYSTEM | 9 | Z891 STAINLESS STEEL SLOTTED DRAINAGE SYSTEM | 17 | ZS880 STAINLESS STEEL LINEAR SHOWER DRAIN | 12 |
| | | Z893 STAINLESS STEEL FLOOR RECEPTOR WITH BAR GRATE | 18 | | |

NOTES

NOTES

For terms and conditions, please visit zurn.ca/terms

Zurn is not responsible for typographical errors. The contents of this guide are subject to revision without notice.

© 2025 Zurn Water, LLC Items in this guide may be covered by U.S. and foreign Patents and Patents Pending. Registered Trademarks.

