



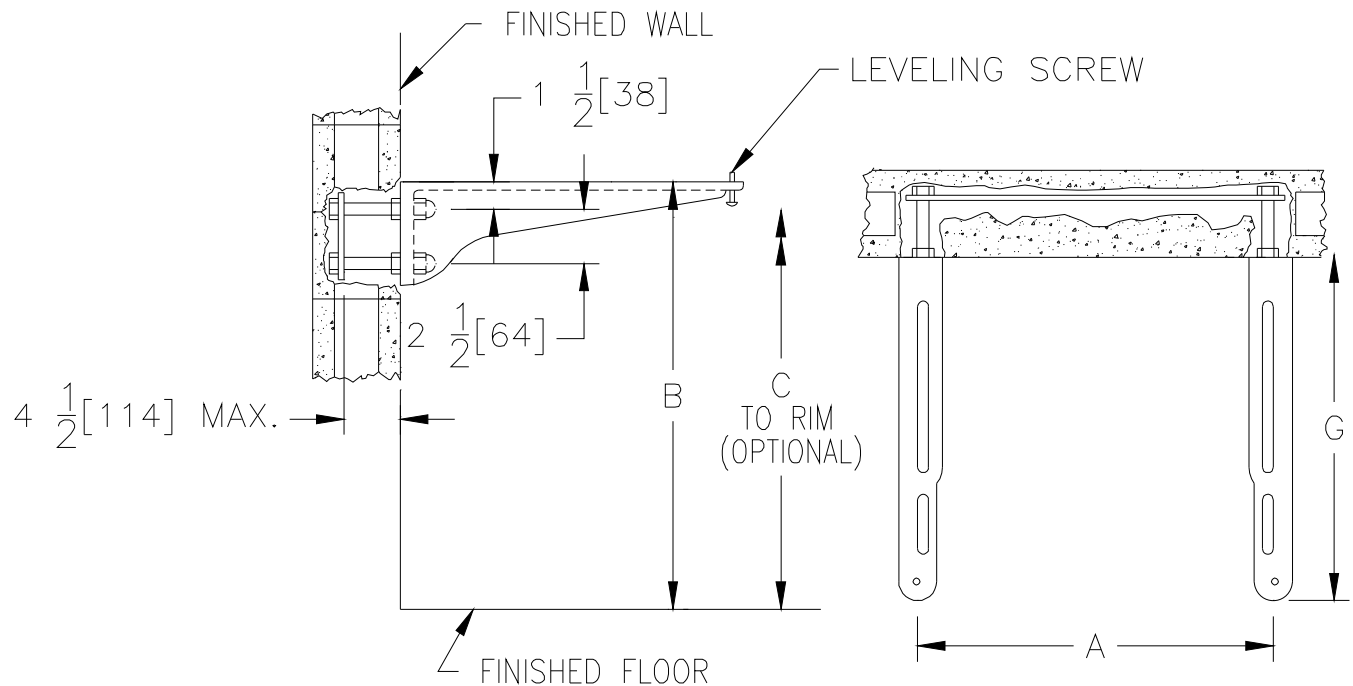
Z1256

EXPOSED ARM SYSTEM WALL SUPPORTED

SPECIFICATION SHEET

TAG _____

Dimensional Data (inches and [mm]) are Subject to Manufacturing Tolerances and Change Without Notice



** WITH STANDARD STUD LENGTH OF 6 [152]

Product No.	Approx. Wt. Lbs. [kg]
Z1256	25 [11]

ENGINEERING SPECIFICATION: ZURN Z1256 Lavatory support with exposed arms. Complete with Dura-Coated support plates, acid resistant epoxy coated cast iron exposed arms, and mounting fasteners.

OPTIONS (Check/specify appropriate options)

PREFIXES

___ Z Dura-Coated System with A.R.C. Exposed Arms*

SUFFIXES

___ -BS Bar Support Valve Plate (Specify Valve Name and Number)
___ -SL Stud Length Over 6 [152] (Specify Length)
___ -VP Vandal-Proof Trim

Note: Dimensional data for letter dimensions depends upon fixture type and manufacturer. See Zurn Carrier/Fixture Rough-In information at www.zurn.com for specific rough-in dimensions

*REGULARLY FURNISHED UNLESS OTHERWISE SPECIFIED

REV. E DATE: 12/2/10 C.N. NO. 120607

DWG. NO. 58861 PRODUCT NO. Z1256

ZURN INDUSTRIES, LLC. ♦ SPECIFICATION DRAINAGE OPERATION ♦ 1801 Pittsburgh Ave. ♦ Erie, PA 16514

Phone: 814/455-0921 ♦ Fax: 814/454-7929 ♦ World Wide Web: www.zurn.com

In Canada: ZURN INDUSTRIES LIMITED ♦ 3544 Nashua Drive ♦ Mississauga, Ontario L4V1L2 ♦ Phone: 905/405-8272 Fax: 905/405-1292