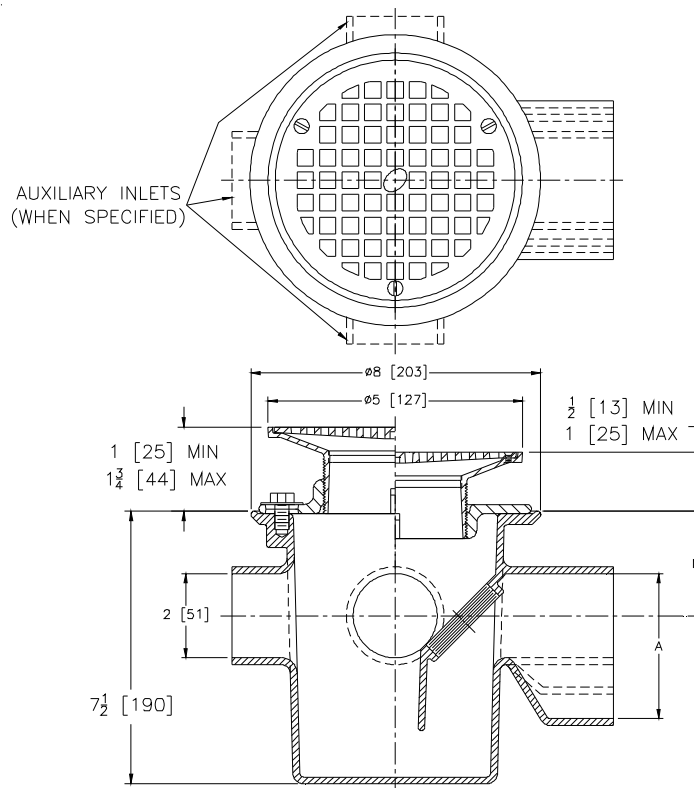


**Z356****MULTI-INLET ADJUSTABLE FLOOR DRAIN WITH TRAP****SPECIFICATION SHEET**

TAG _____

Dimensional Data (inches and [mm]) are Subject to Manufacturing Tolerances and Change Without Notice



Dimensions In Inches		Approx. Wt. Lbs. [kg]
A-Pipe Size	M	
2 [51]	2-7/8 [73]	18 [8]
3 [76]	3-3/8 [86]	
4 [102]	3-23/32 [94]	

ENGINEERING SPECIFICATION: ZURN ZN356

Multi-Inlet adjustable floor drain with trap, Dura-Coated cast iron body with integral trap seal, complete with plastic cleanout plug, invertable collar and 5 [127] round, polished nickel bronze adjustable top.

OPTIONS (Check/specify appropriate options)**PIPE SIZE**

2-3-4 [51-76-102]

(Specify size/type) **OUTLET**

_____ NH No-Hub

PREFIXES

- _____ ZB D.C.C.I. Body w/Polished Bronze Top
_____ ZN D.C.C.I. Body w/Polished Nickel Bronze Top*

SUFFIXES

- _____ -AR Acid Resisting Epoxy Coated Cast Iron
_____ -BP Bronze Plug
_____ -G Galvanized Cast Iron
_____ -J Auxiliary Inlet Connection (Opposite Outlet)
_____ -J2 Two (2) Auxiliary Inlet Connections
(1 Opposite Outlet, 1 Left Side Facing Outlet)
_____ -J3 Three (3) Auxiliary Inlet Connections
_____ -PC Protective Cover
_____ -VP Vandal-Proof Secured Top

* Regularly furnished unless otherwise specified.

Zurn Industries, LLC | Specification Drainage Operation

1801 Pittsburgh Avenue, Erie, PA U.S.A. 16502 · Ph. 855-663-9876, Fax 814-454-7929

In Canada | **Zurn Industries Limited**

3544 Nashua Drive, Mississauga, Ontario L4V 1L2 · Ph. 905-405-8272, Fax 905-405-1292

www.zurn.com

Rev. G

Date: 06/04/14

C.N. No. 131070

Prod. | Dwg. No. Z356