



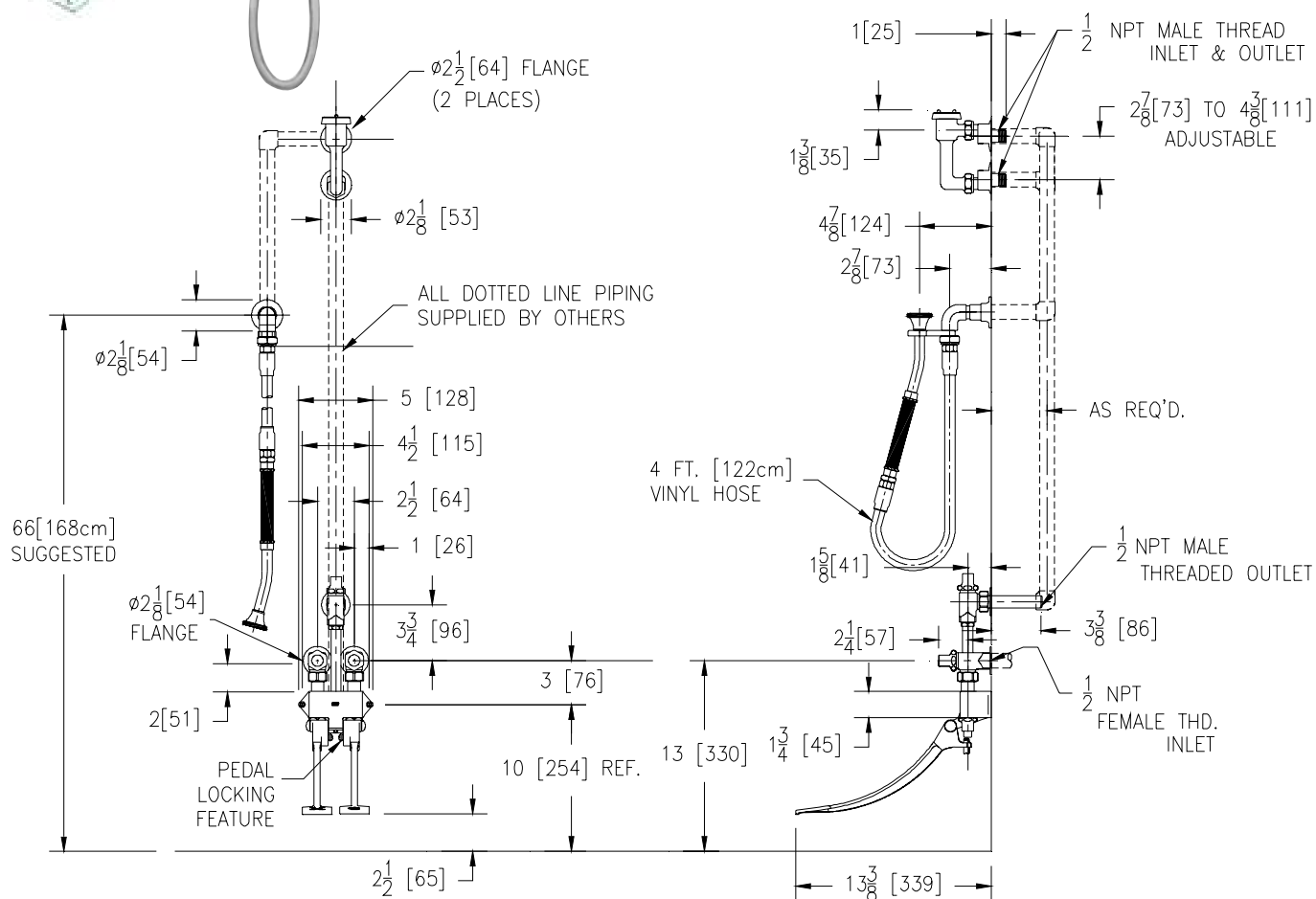
# BEDPAN WASHER

## Z85500-WM-EVB-HK-SE-SH2-VC

### TAG \_\_\_\_\_



**Engineering Specifications: Zurn AquaSpec® Z85500-WM-EVB-HK-SE-SH2-VC**  
Polished chrome-plated brass wall mounted, self-closing double pedal bedpan washer with two 1/2" NPT angle stop inlets on 2-1/2"[64mm] centers and one 1/2"-14 NPT male outlet. Unit is furnished with an elevated vacuum breaker, flanged wall supplies, a 4'[122cm] vinyl spray hose with an angled head and insulated 6"[152mm] handle, hook and volume control.



Note: All dimensions are for reference only. Do not use for pre-plumbing



[www.GreenSpec.com](http://www.GreenSpec.com)

#### OPTIONAL ACCESSORIES

Suffix	Description
— -SH	Spray Hose
— -SH1	Spray Hose Insulated Handle

ZURN INDUSTRIES, LLC ♦ COMMERCIAL BRASS OPERATION ♦ 2640 SOUTH WORK STREET ♦ FALCONER NY 14733

Phone: 1-716-665-1132 ♦ Fax: 1-716-665-1135 ♦ World Wide Web: [www.zurn.com](http://www.zurn.com)

In Canada: ZURN INDUSTRIES LIMITED ♦ 3544 Nashua Drive ♦ Mississauga, Ontario L4V1L2 ♦ Phone: 905/405-8272 Fax: 905/405-1292