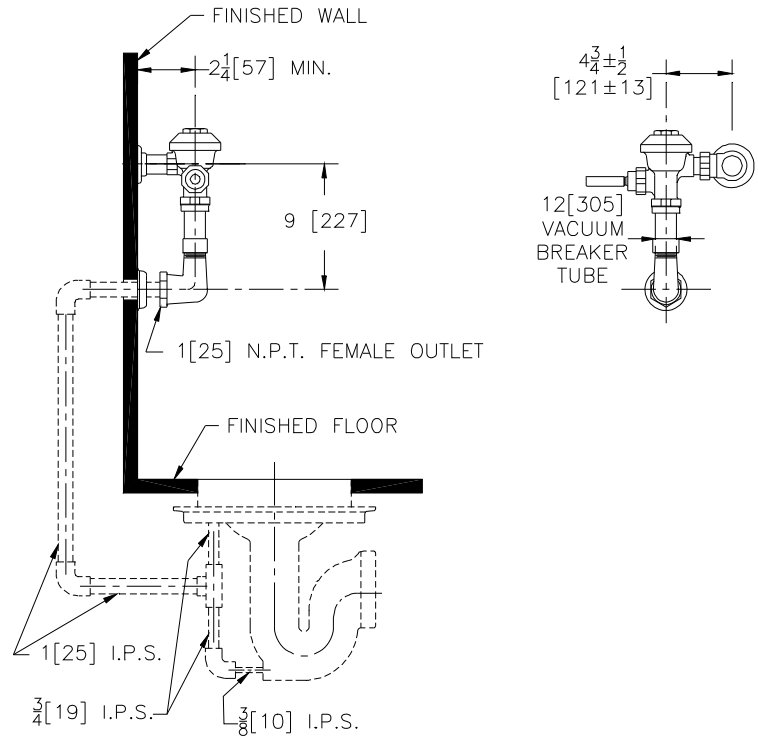




Z6099AV

Exposed Flush Valve For Flushing Rim Floor Drains



Flow Options

- | | |
|------------------------------------|--------------------------------|
| <input type="checkbox"/> -HET | 1.28 gpf High Efficiency Flush |
| <input type="checkbox"/> -WS1 | 1.6 gpf Low Consumption Flush |
| <input type="checkbox"/> -Standard | 3.5 gpf |
| <input type="checkbox"/> -FF | 4.5 gpf Full Flush |

Suffix Options (Check/Specify Appropriate Options)

- | | |
|---------------------------------|--------------------------------|
| <input type="checkbox"/> -BG | BioCare Handle |
| <input type="checkbox"/> -H | Handle on Front of Flush Valve |
| <input type="checkbox"/> -L | 1" [25] Metal Push Button |
| <input type="checkbox"/> -L3 | 3" [76] Metal Push Button |
| <input type="checkbox"/> -YJ | Split Ring Pipe Support |
| <input type="checkbox"/> -YK | Solid Ring Pipe Support |
| <input type="checkbox"/> -_____ | Other |

ENGINEERING SPECIFICATION: ZURN Z6099AV AquaVantage® 'AV' Exposed Flush Valve For Flushing Rim Floor Drains- Exposed, quiet diaphragm-type, chrome plated, flushometer valve with a polished exterior. Complete with Zurn's AquaVantage® TPE, chloramine resistant, dual seal diaphragm with a clog resistant, triple filtered by-pass. The valve is ADA compliant with a non-hold open and no leak handle feature, high back pressure vacuum breaker, one piece hex coupling nut and adjustable tailpiece. Control stop has internal siphon-guard protection, vandal resistant stop cap, sweat solder kit and a cast wall flange with set screw. Internal seals are made of chloramine resistant materials.

Architectural/Engineering Approval

The information contained in this document is subject to change without notice.
Please contact Zurn for most up to date information.

ZURN INDUSTRIES, LLC. ♦ COMMERCIAL BRASS OPERATION ♦ 5900 ELWIN BUCHANAN DRIVE ♦ SANFORD NC 27330

Phone: 1-800-997-3876 ♦ Fax: 919-775-3541 ♦ World Wide Web: www.zurn.com

In Canada: ZURN INDUSTRIES LIMITED ♦ 7900 Goreway Drive Unit 10 ♦ Brampton, Ontario L6T5W6 ♦ Phone: 905-405-8272 Fax: 905-405-1292