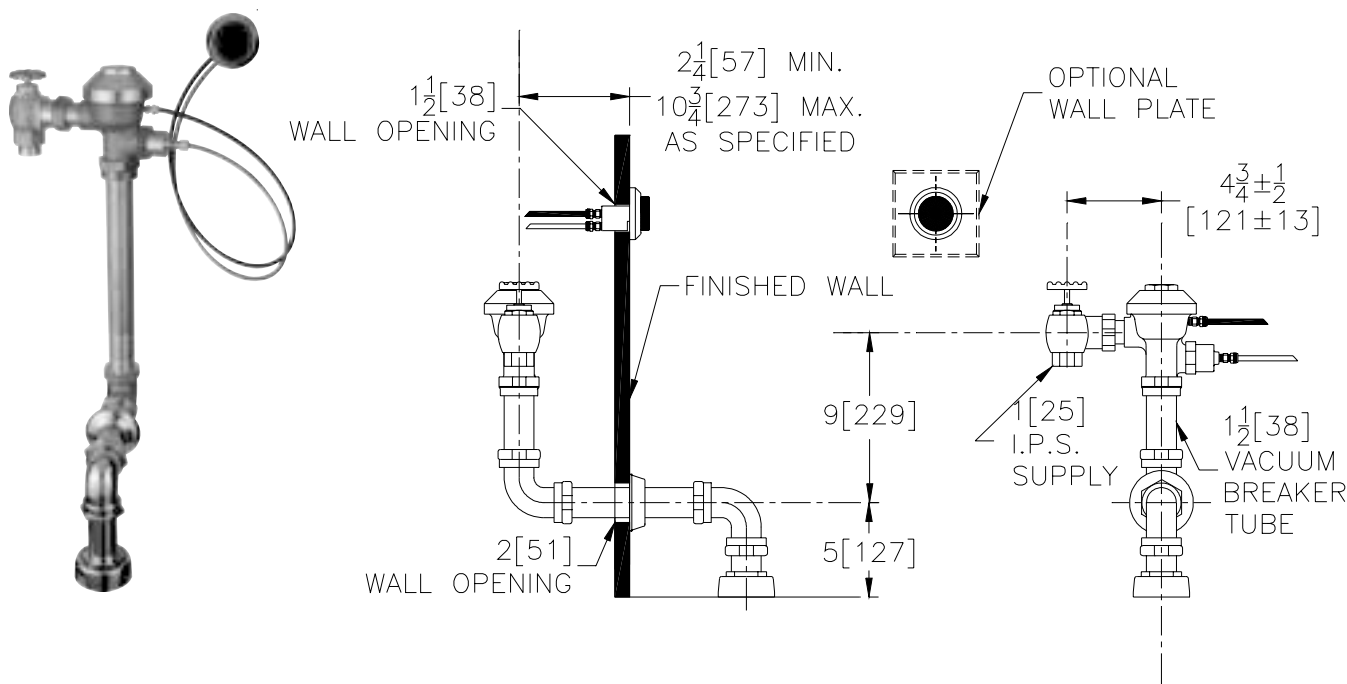




Concealed ZH6142AV Model

With Hydraulic Actuator For Top Spud Water Closets



Flow Options

<input type="checkbox"/> -WS1	1.6 Gal. Low Consumption Flush
<input type="checkbox"/> -FF	4.5 Gal. Full Flush
<input type="checkbox"/> Standard Flush	3.5 Gallons Per Flush

Suffix Options (Check/Specify Appropriate Options)

<input type="checkbox"/> -FW	Fixture Wall Mounted Hydraulic Actuator
<input type="checkbox"/> -MB	1" [25] Metal push button Hydraulic Actuator
<input type="checkbox"/> -SW	Side Wall Mounted Hydraulic Actuator
<input type="checkbox"/> -WP	Wall Plate for Push Button (ZP-50)
<input type="checkbox"/>	Other

ENGINEERING SPECIFICATION: ZURN ZH6142AV AquaVantage® 'AV' Concealed Closet Flush Valve with Hydraulic Actuation- Concealed, quiet diaphragm-type rough brass flushometer valve with Zurn's AquaVantage® TPE, chloramine resistant, dual seal diaphragm with a clog resistant, triple filtered by-pass. The valve is complete with a non-hold open type hydraulic push button actuator that may be located up to 36" [914] (7' [2133] with -SW option) from the valve, high back pressure vacuum breaker, one piece hex coupling nut, adjustable tailpiece, elbow flush connection, spud coupling and flange for top spud connection. Control stop has internal siphon-guard protection, and sweat solder kit. Internal seals are made of chloramine resistant materials.

This space is for Architectural/engineering Approval