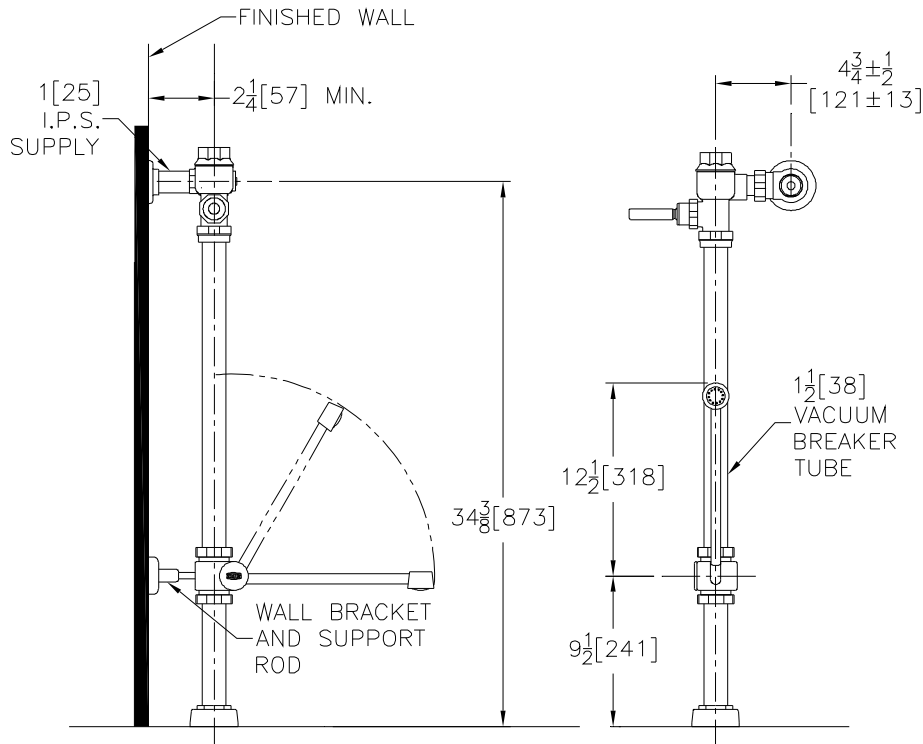




## Exposed Z6200-BWN1 Model Metroflush Piston-Operated Flush Valve with Bedpan Washer for Water Closets



### Flow Options

- ☐ **-WS1** 1.6 Gal. Low Consumption Flush  
☐ **Standard Flush** 3.5 Gallons Per Flush

### Suffix Options (Check/Specify Appropriate Options)

- \_\_\_\_ **-BG** BioCare Handle  
\_\_\_\_ **-H** Handle on Front of Flush Valve  
\_\_\_\_ **-L** 1" [25] Metal Push Button  
\_\_\_\_ **-L3** 3" [76] Metal Push Button  
\_\_\_\_ **-VC** Vandal Resistant Stop Cover  
\_\_\_\_ **-YB** Sweat Solder Kit  
\_\_\_\_ **-YC** Cast Wall Flange  
\_\_\_\_ **-YJ** Split Ring Pipe Support  
\_\_\_\_ **-YK** Solid Ring Pipe Support  
\_\_\_\_ Other

This space is for Architectural/engineering Approval

**ENGINEERING SPECIFICATION: ZURN Z6200-BWN1 Metroflush Piston-Operated Flush Valve with Bedpan Washer-** The Metroflush is an exposed, quiet type, chrome plated, flushometer valve with a polished exterior. Complete with Zurn MetroVantage chloramine resistant piston with a clog resistant by-pass. Valve is ADA compliant with a non-hold open and no leak handle feature, high back pressure vacuum breaker, bedpan washer assembly, wall bracket and support rod, one piece hex coupling nut, adjustable tailpiece, spud coupling and flange for top spud connection. Control stop has internal siphon-guard protection and a wall flange with set screw. Internal seals are made of chloramine resistant materials.

- ☐ **Z6000PL-BWN1 - Aquaflush Plus** is furnished as specified above and includes sweat solder kit, vandal resistant stop cap, and cast wall flange with set screw. **Complete with a chloramine resistant, dual seal diaphragm with a clog resistant by-pass.**

ZURN INDUSTRIES, INC. ♦ COMMERCIAL BRASS OPERATION ♦ 5900 ELWIN BUCHANAN DRIVE ♦ SANFORD NC 27330

Phone: 1-800-997-3876 ♦ Fax: 919-775-3541 ♦ World Wide Web: [www.zurn.com](http://www.zurn.com)

In Canada: ZURN INDUSTRIES LIMITED ♦ 3544 Nashua Drive ♦ Mississauga, Ontario L4V1L2 ♦ Phone: 905-405-8272 Fax: 905-405-1292