



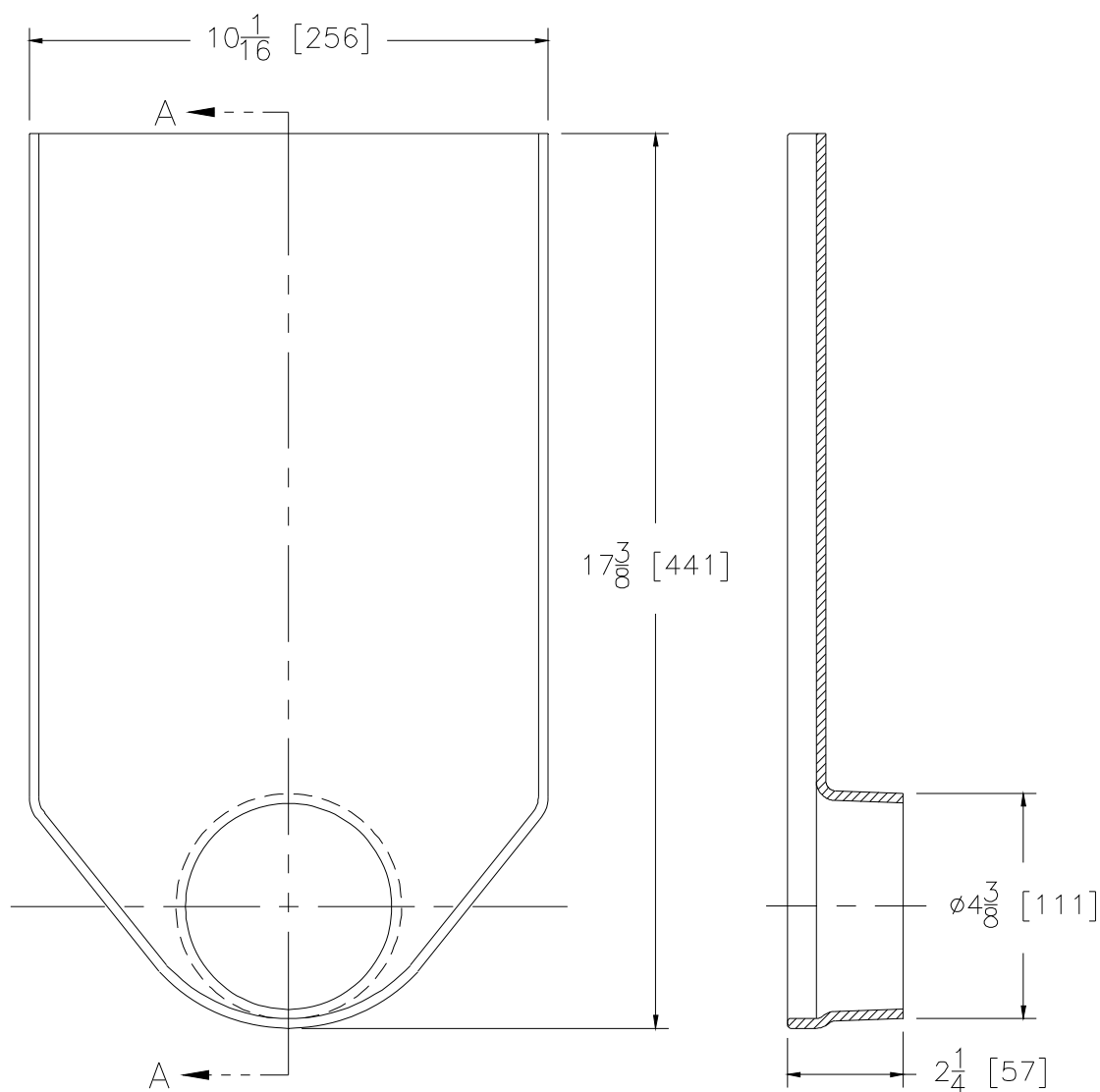
# Z812 End Outlets

Dimensional Data (inches and [ mm ]) are Subject to Manufacturing Tolerances and Change Without Notice

Please Check ✓	Item No.	Part Number	Item I.D.
	1	578870026	P812-E4

## ENGINEERING SPECIFICATION: ZURN Z812-E4

4 [102] No-Hub End Outlet for 12 [301] wide Trench Drainage System. Outlet is made of 3/16 [5] thick fiberglass and is designed for No-Hub applications using an adapter (Supplied by others). A minimum trench invert of 6 [152] is recommended to allow adequate amount of concrete on top. **\*\*Unit to be cut in field per channel depth.**



SECTION A-A



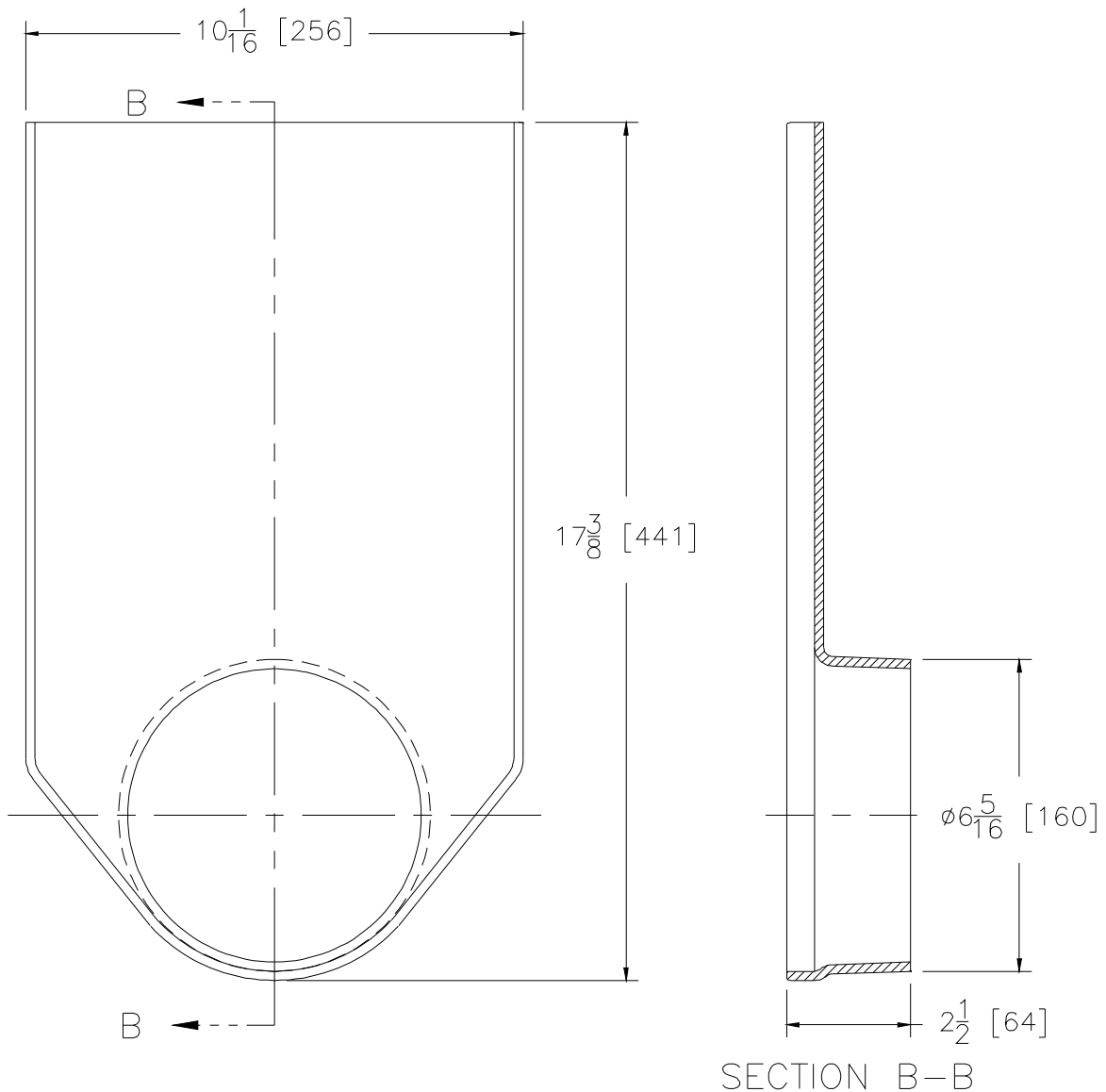
# Z812 End Outlets

Dimensional Data (inches and [ mm ]) are Subject to Manufacturing Tolerances and Change Without Notice

Please Check ✓	Item No.	Part Number	Item I.D.
	2	578870036	P812-E6

## ENGINEERING SPECIFICATION: ZURN Z812-E6

6 [152] No-Hub End Outlet for 12 [301] wide Trench Drainage System. Outlet is made of 3/16 [5] thick fiberglass and is designed for No-Hub applications using an adapter (Supplied by other). A minimum trench invert of 6 [152] is recommended to allow adequate amount of concrete on top. **\*\*Unit to be cut in field per channel depth.**





# Z812 End Outlets

Dimensional Data (inches and [ mm ]) are Subject to Manufacturing Tolerances and Change Without Notice

Please Check ✓	Item No.	Part Number	Item I.D.
	3	570730196	P812-E8

## ENGINEERING SPECIFICATION: ZURN Z812-E8

8 [203] No-Hub End Outlet for 12 [301] wide Trench Drainage System. Outlet is made of 7/32 [6] thick fiberglass and is designed for No-Hub applications using an adapter (Supplied by other). A minimum trench invert of 6 [152] is recommended to allow adequate amount of concrete on top. **\*\*Unit to be cut in field per channel depth.**

