



## Model: Z.UR1.S.TM

Zurn One Battery Powered Sensor Urinal System with  
0.125 GPF EcoVantage® Flush Valve

TAG \_\_\_\_\_

### Architectural/Engineering Specification:

Complete EcoVantage® high efficiency 0.125 gpf sensor actuated, battery powered, wall mounted commercial urinal system with Z5755-U Omni-Flo top spud urinal, ZER6003AV-ULF-TM exposed, sensor activated with manual override button chrome plated urinal flushometer for either left or right hand supply manufactured by Zurn Industries.

### Product Features:

- 0.125 gpf (gallons per flush)
- Wall mounted extended rim top spud urinal
- High efficiency siphon washout flush action
- Integral trap
- Vitreous china wall urinal construction
- Diaphragm- type flushometer complete with Zurn's Go Blue® TPE, chloramine resistant, dual seal diaphragm with a clog resistant filtered by-pass.
- Manual Override Button
- High pressure vacuum breaker
- Adjustable tailpiece
- Contol stop with internal siphon guard protection, vandal resistant cap, sweat solder kit and cast wall flange with set screw
- Asymmetric backwall for reduced splash back
- Oversized footprint to make retrofit easy
- Vandal resistant outlet strainer included
- 88% water savings over standard 1.0 gpf system



### Zurn One System Packout Includes:

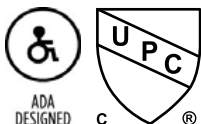
#### Urinal - Z5755-U:

0.125 gpf to 1.0 gpf vitreous china, wall hung, integral trap, washdown urinal complete with 3/4" top spud connection, concealed universal retrofit wall bracket, 2" outlet connection and vandal resistant outlet strainer.

#### Flush Valve - ZER6003AV-ULF-TM:

The ZER EZ Gear-Driven Urinal Flush Valve is performance engineered with the dual action of the ceramic disc cartridge and motor gear-driven operation. Its polished chrome-plated finish, modern top-mount design with manual override button, and quiet diaphragm operation are ideal for new and retrofit commercial restroom applications.

### Compliance and Certification:



Meets the American Disabilities Guidelines and ANSI A117.1 requirements when installed according to these requirements.

Fixture - Complies with ASME A119.2 / CSA B45.1

#### Architectural/Engineering Approval

The information contained in this document is subject to change without notice.  
Please contact Zurn for most up to date information.

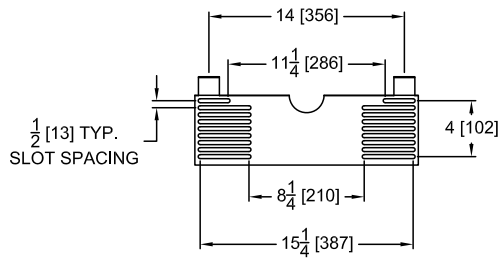


## Model: Z.UR1.S.TM

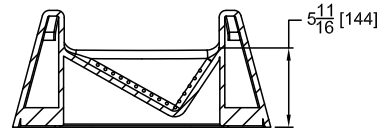
Zurn One Battery Powered Sensor Urinal System with  
0.125 GPF EcoVantage® Flush Valve

TAG \_\_\_\_\_

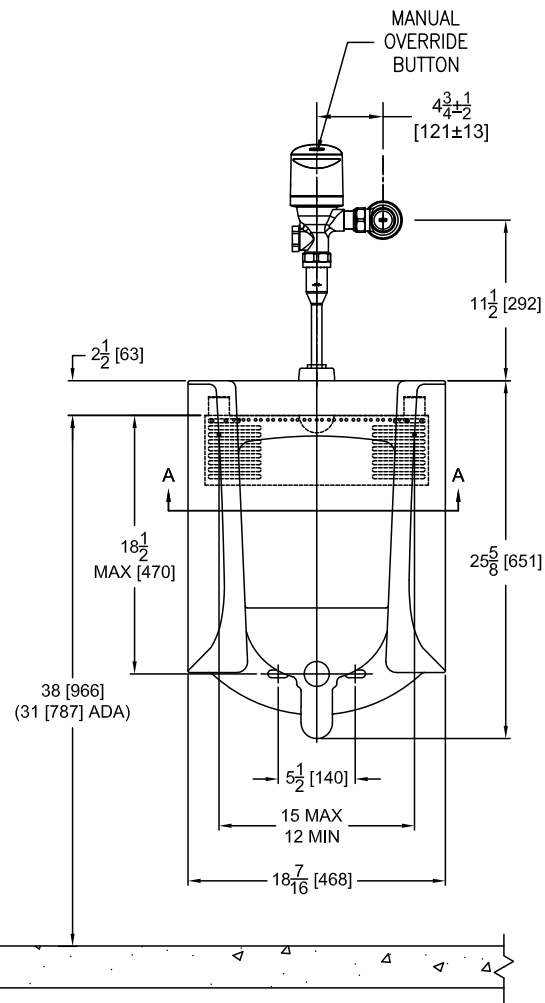
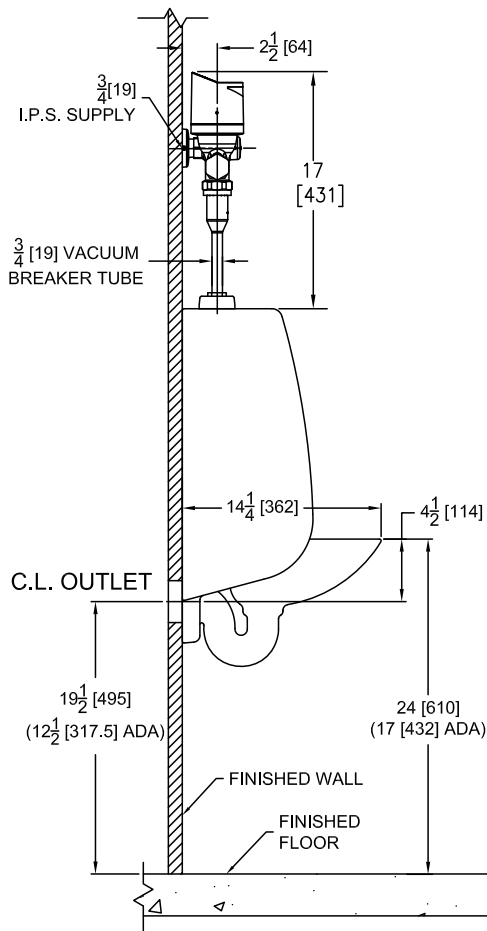
### Rough-in Dimensions



UNIVERSAL RETROFIT  
BRACKET (UB)



SECTION A-A



Meets the American Disabilities Guidelines and ANSI A117.1 requirements  
when installed according to these requirements.

Fixture - Complies with ASME A119.2 / CSA B45.1