



HET CONCEALED, WALL HUNG ECOVANTAGE® FLUSH VALVE TOILET SYSTEM WITH ZURNSHIELD™ GLAZE Z5617-BWL

TAG _____

ARCHITECTURAL & ENGINEERING SPECIFICATION

Vitreous China, 1.1 gpf [4.2 Lpf] or greater high efficiency wall hung toilet with siphon jet flushing action, ZurnSHIELD™ ceramic glaze and elongated front rim with 1-1/2" [39mm] back spud connection. High efficiency toilet is designed to exceed industry standards with flush volumes of 1.1 gallons per flush or higher.

PRODUCT FEATURES

- Zurn High Efficiency Toilets and paired performance flush valve systems are designed to exceed industry standards, while using as little as 1.1 gallons of water per flush
- Universal high efficiency toilet can be specified with 1.28 gpf [4.8Lpf], 1.6 gpf [6.0 Lpf] or dual flush valves
- Vitreous china
- ZurnSHIELD™ ceramic glaze creates a permanent surface that protects the fixture by inhibiting the growth of stain and odor causing mold, mildew, and bacteria, thus reducing the amount of time, chemicals and water to clean the bowl
- Backspud/Concealed flush valve system
- Elongated front rim
- 2-1/8" [54mm] fully glazed trapway
- High efficiency siphon jet flush action
- Shipping Weight: 50 lbs

COMPLIANCE AND CERTIFICATION:

- Complies with ASME A112.19.2 / CSA B45.1



This product should be used with a WaterSense labeled counterpart with a compatible flush volume to ensure that the entire system meets the requirements for water efficiency and performance.

NOTE: To ensure system performance:
Minimum Running Water Pressure = 30 psi.



SUFFIX OPTION

-RF	Retro-Fit Nut Kit for extending carrier studs from existing wall
-----	--

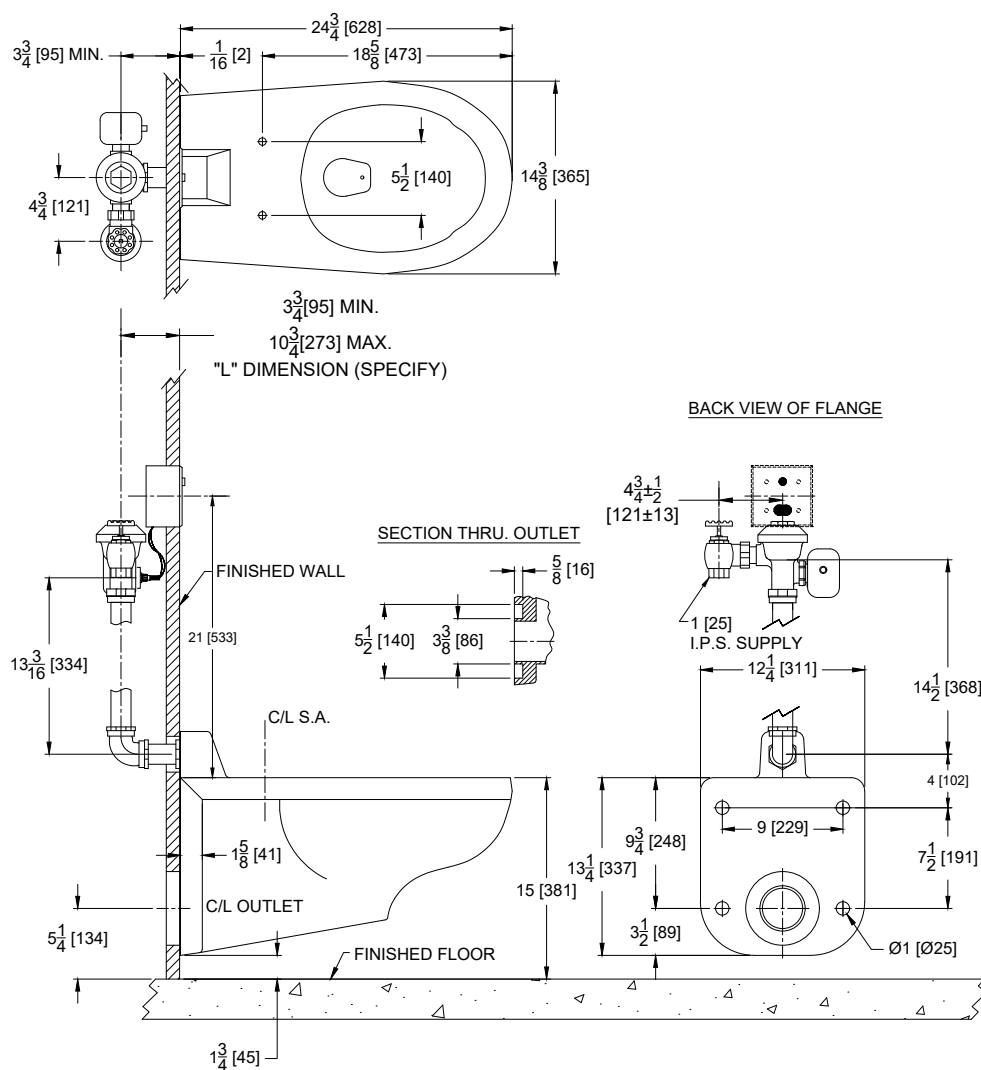
RECOMMENDED TRIM

Z595SS-EL	Elongated, standard white, open front toilet seat less cover with stainless steel check hinge
-----------	---

ARCHITECTURAL & ENGINEERING APPROVAL

The information contained in this document is subject to change without notice.
Please contact Zurn for most up to date information.

Rough-in dimensions/Overview dimensions



NOTE: All dimensions are for reference only. Do not use for pre-plumbing.