



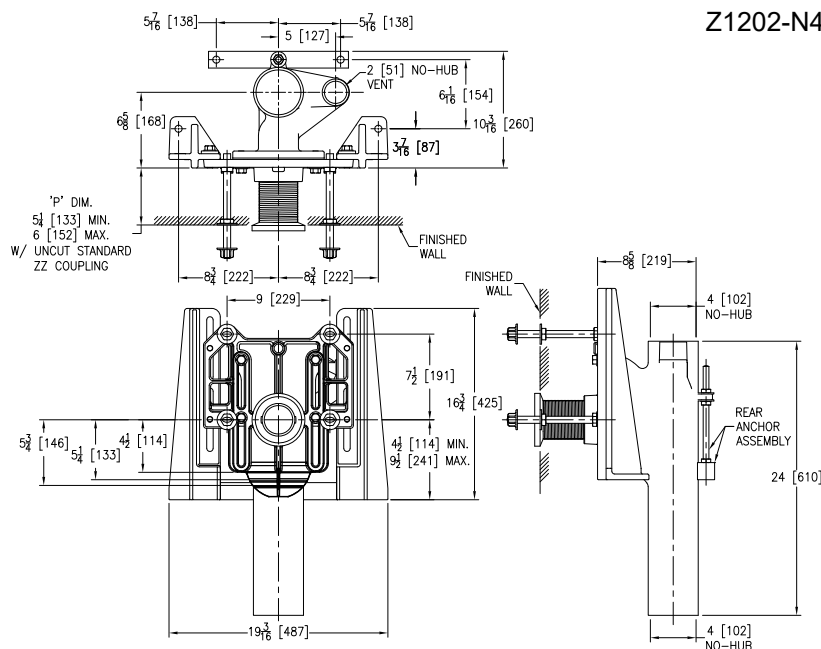
## Z1202-N4-XH

EXTRA-HEAVY-DUTY - 750 lbs [340kg]  
EZCARRY® ADJUSTABLE VERTICAL HIGH PERFORMANCE  
SIPHON JET NO-HUB WATER CLOSET CARRIER SYSTEM

SPECIFICATION SHEET

TAG \_\_\_\_\_

Design and Dimensional Data (inches and [ mm ]) are Subject to Manufacturing Tolerances and Change Without Notice



Z1202-N4-XH Illustrated

Product Number	Approx. Wt. lbs [kg]
Z1202-N4-XH	99 [45]

### Note:

1. Cut ZZ Coupling, Min. 'P' Dim. Obtainable = 2 [51] Cut EZ-Set™ Coupling, Min. 'P' Dim. Obtainable=4-1/4 [108] or 2-1/16 [52] for 12 [305] NPT
2. Feet bolted to floor using min. 1/2 [13] dia. anchors.
3. Rear anchor assembly required for secure installation.
4. Floor anchors must each be able to withstand a pull-out force of 820 lbs [372 kg].
5. Pull-out forces are calculated values with standard coupling assembly. No safety factor has been applied. See Form C38 for more information.
6. 2 [51] No-Hub vent connection regularly furnished on right hand side. Left hand available when specified (Suffix -VL)
7. Auxiliary inlet available right (-JR) or left (-JL) or both sides (-JJ) when specified.

### ENGINEERING SPECIFICATION: ZURN Z1202-N4-XH

EZCarry® Extra-Heavy-Duty vertical siphon jet water closet carrier system, with high performance Dura-Coated cast iron main fitting with hydro-mechanically optimized sweep, 4" [102mm] no-hub connections, and extended 2" [51 mm] vent. Corrosion resistant, adjustable 3" [76 mm] dia. X 6" [152 mm] coupling with integral test cap, designed to increase flow velocity and line carry, and labor saving "Neo-Seal" bonded gasket optimizes flow performance while reducing installation steps. Complete system includes an adjustable, gasketed faceplate; floor mounted foot supports; extra-heavy-duty 1/2" [13 mm] rear anchor tie down; fixture bolts, trim, and stud protectors. EZCarry® XH system complies with all applicable requirements of ASME A112.6.1M up to a 750 lbs [340 kg] maximum static load.

### OPTIONS (Check/specify appropriate options)

\_\_\_\_ Z1202-N4-XH      4 [102] No-Hub Stack, Single Inlet, 2 [51] Right Hand Vent

### PREFIXES

\_\_\_\_ Z      D.C.C.I. System with Zurn ZZ Adjustable Coupling\*  
\_\_\_\_ ZQ      D.C.C.I. System with NPT Faceplate, Non-Adjustable Coupling

### SUFFIXES

____ -CC	Corrosion Resistant Cast Iron Coupling (2-1/4 [57] to 12 [305])	____ -JJ	Two 2 [51] Auxiliary Inlets
____ -CE	EZ-Set™ Coupling (NPSM 6 [152] , 12 [305] or custom) (NPT 12 [305] or custom)	____ -JL	2 [51] Left-Hand Auxiliary Inlet
____ -CL	Custom Length Standard Coupling with Integral Test Cap (Specify Length 4, 8, 10, 12 [102, 203, 254, 305])	____ -JR	2 [51] Right-Hand Auxiliary Inlet
____ -CS	2-1/4 [57] Polymer Coupling with Integral Test Cap (ZZ Coupling Only)	____ -VL	Left Hand Vent Connection
____ -G	Galvanized Cast Iron	____ -VP	Vandal-Proof Trim
		____ -45	Finishing Frame for Siphon Jet System
		____ -50	Flush Valve Supply Support for Water Closets

\* Regularly furnished unless otherwise specified.

⚠ **WARNING:** Cancer and Reproductive Harm - [www.P65Warnings.ca.gov](http://www.P65Warnings.ca.gov)

⚠ **ADVERTENCIA:** Cáncer y daño reproductivo - [www.P65Warnings.ca.gov](http://www.P65Warnings.ca.gov)

⚠ **AVERTISSEMENT:** Cancer et effets néfastes sur la reproduction - [www.P65Warnings.ca.gov](http://www.P65Warnings.ca.gov)

Zurn Industries, LLC | Specification Drainage Operation  
1801 Pittsburgh Avenue, Erie, PA USA 16502, Ph. 855.663.9876

In Canada | Zurn Industries Limited  
7900 Goreway Drive, Unit 10, Brampton, Ontario L6T 5W6, Ph. 877.892.5216

[www.zurn.com](http://www.zurn.com)

Rev.	E
Date:	12/26/22
C.N. No.	144897
Patent	<a href="http://zurn.com/patents">zurn.com/patents</a>
Prod.   Dwg. No.	Z1202-N4-XH