



ARCHITECTURAL & ENGINEERING SPECIFICATION

Vitreous china, floor mounted, children's toilet with siphon jet flushing action, 10-1/2" [267mm] high elongated front rim, with 1-1/2" [38mm] top spud. This bowl is designed to perform to industry standards with as little as 1.28 gallons per flush, engineered to provide optimal performance.

PRODUCT FEATURES

- Zurn high efficiency toilets and paired performance flush valve systems are designed to exceed industry standards, while using as little as 1.28 gallons of water per flush
- Vitreous china
- Elongated front rim
- 2" fully glazed trapway
- High efficiency siphon jet flush action
- Zurn product system component compatibility and quality assurance
- Shipping weight: 42 lbs

COMPLIANCE AND CERTIFICATION:

- Complies with ASME A112.19.2 / CSA B45.1



RECOMMENDED TRIM

Z5959SS-JUV

White, open front juvenile toilet seat less cover with stainless steel check hinge

Z5972-COMB

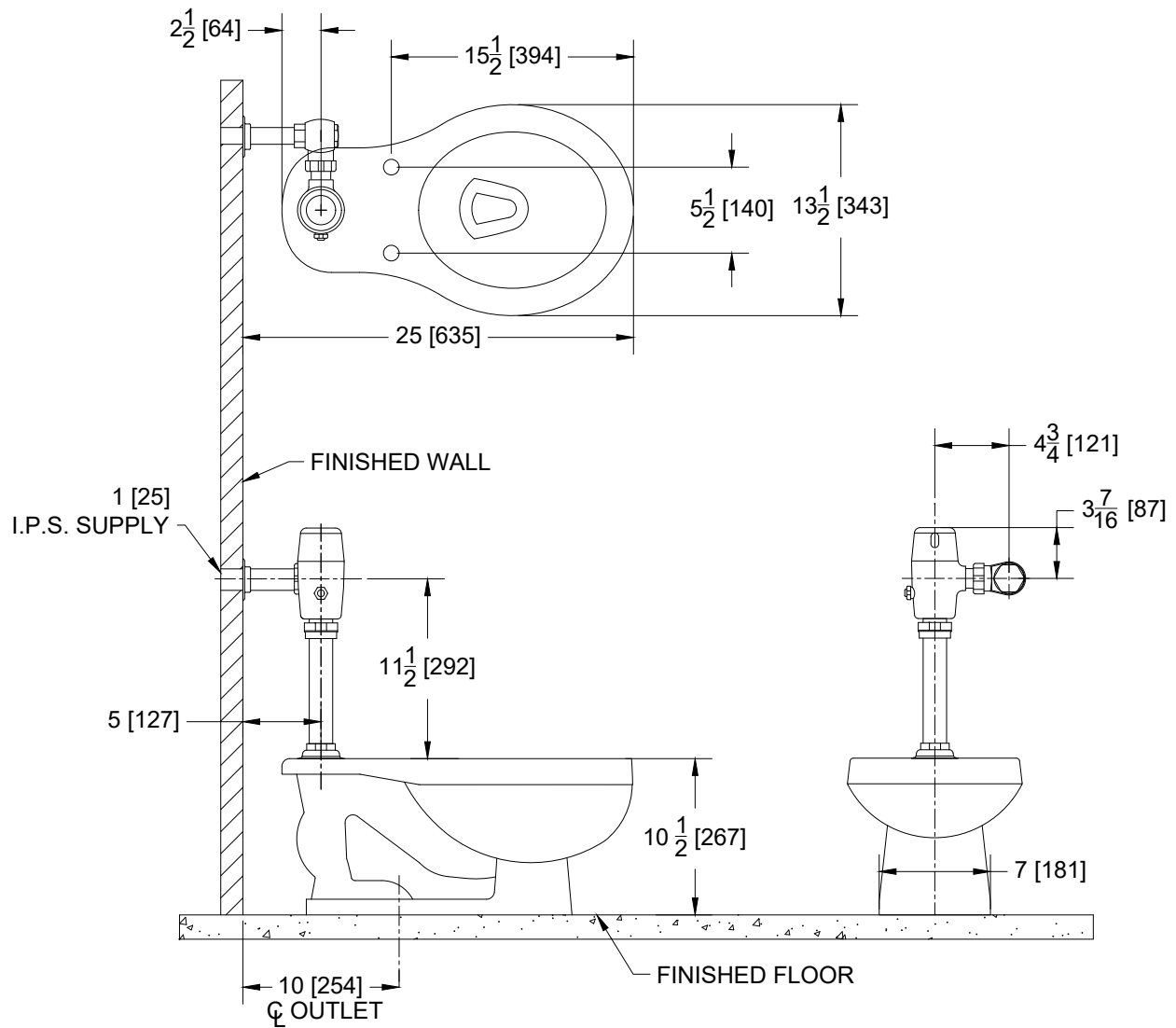
Closet bolt & wax ring kit

See Zurn One Systems for suggested packages.

ARCHITECTURAL & ENGINEERING APPROVAL

The information contained in this document is subject to change without notice.
Please contact Zurn for most up to date information.

Rough-in dimensions/Overview dimensions



NOTE: All dimensions are for reference only. Do not use for pre-plumbing.