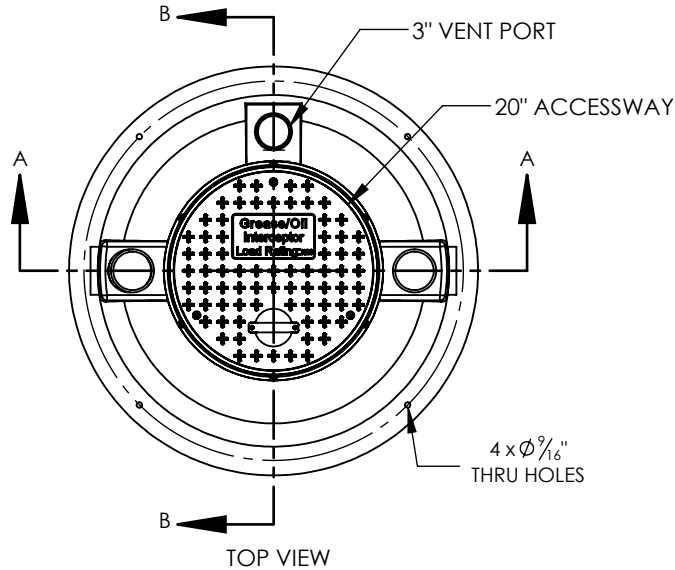


NOTES

ALL Z-75H UNITS ARE MANUFACTURED WITH FIBERGLASS REINFORCED PLASTICS.

- 1. PHYSICAL CHARACTERISTICS AND THICKNESS: POLYESTER RESIN AND E GLASS MINIMUM THICKNESS 5/16" TOP AND WALL AND 3/8" BOTTOM
- 2. ALL Z-75H UNITS ARE TO BE INSTALLED IN ACCORDANCE WITH THE MANUFACTURER'S INSTALLATION INSTRUCTION
- 3. STANDARD PIPING IS SCH. 40 PVC
- 4. Z-75H UNITS COME STANDARD WITH 4" INLET AND OUTLET EXTENSION COLLAR TO BE ORDERED TO MEET FINISHED GRADE, CUT ON SITE FOR FINAL ADJUSTMENT AND CAULKED WITH SIKAFLEX BY CONTRACTOR FOR WATERTIGHT SEAL
- 6. COVERS AVAILABLE FOR H2O TRAFFIC LOADING, PEDESTRIAN LOADING OR ABOVE GROUND INSTALLATION
- 7. 30 YEAR WARRANTY AGAINST LEAKS, AND STRUCTURAL FAILURE DUE TO MANUFACTURING DEFECTS
- 8. U.S. PATENT #5,746,912; CDN PATENT #2,195,822



US PAT. # 5746912

Fog-Ceptor®

MANUFACTURER: ZURN GREEN TURTLE

PROCEPTOR MODEL NUMBER: PDI G-101

STANDARDS: 85 US GAL.

LIQUID CAPACITY (WORKING VOLUME): 75 GPM

RATED FLOW: TYPE A

PRODUCT TYPE BY RATING: 90%

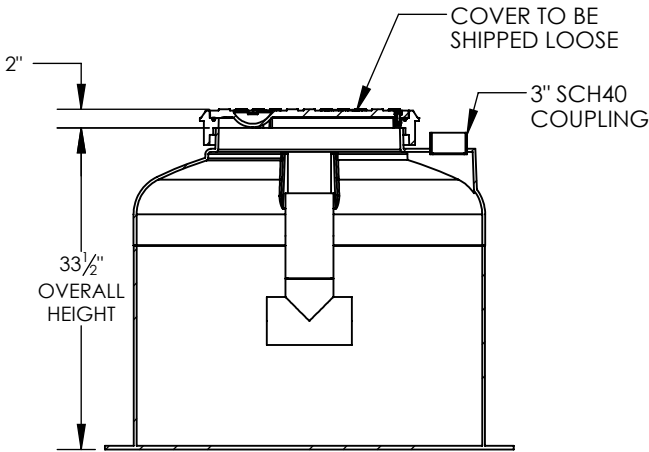
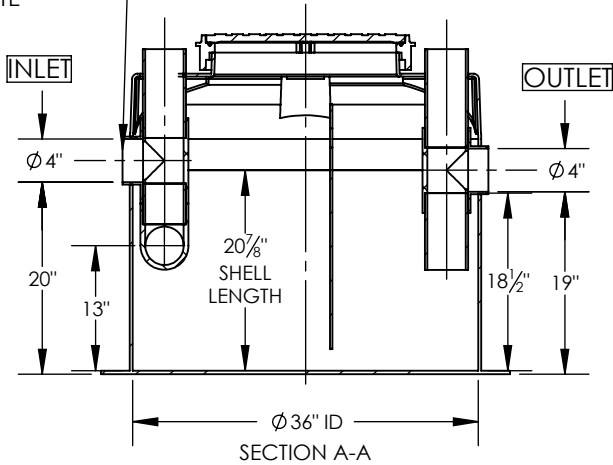
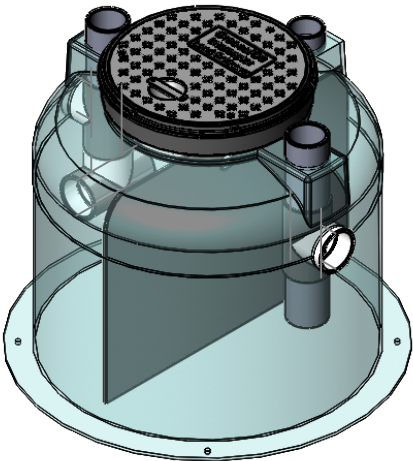
EFFICIENCY AT THE RATED CAPACITY: 6 FT.

STD. MAX BURIAL DEPTH TO TOP OF TANK: 1133 PSF

MAX VERTICAL LOAD:

MONTH/YEAR OF MANUFACTURE:

PROVIDED FLOW CONTROL DEVICE (NOT SHOWN) TO BE INSTALLED ON SITE



|                     |         |
|---------------------|---------|
| TOTAL WET VOLUME    | 85 GAL  |
| MAX GREASE CAPACITY | 150 LBS |
| MAX SOLID CAPACITY  |         |
|                     |         |
| FLOW RATING         | 75 GPM  |
|                     |         |
| MAX TEMPERATURE     | 160 F   |
| MIN. TEMPERATURE    | - 30 F  |

DWG. TITLE:  
Z75H FOG-CEPTOR

PROJECT:

SIZE A

DRAWING NOT TO SCALE

Proceptor®

ZURN®

DWG #: 18-4649-C

REV. 2