



# Z874-U-18-HD

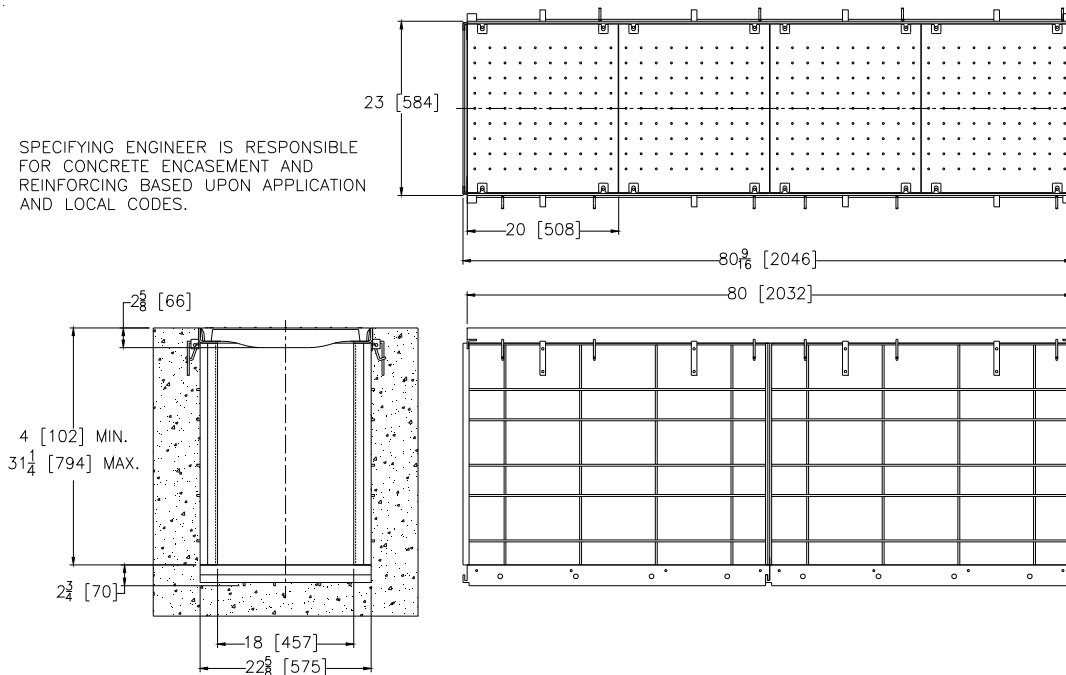
## UTILITY TRENCH W/STEEL FRAME

### 18 [457] THROAT WIDTH & COVER

SPECIFICATION SHEET

TAG \_\_\_\_\_

Dimensional Data (inches and [ mm ]) are Subject to Manufacturing Tolerances and Change Without Notice

**ENGINEERING SPECIFICATION: Zurn Z874-U-18-HD**

Channels shall be 80 [2032] long, 23 [584] wide reveal and have a 18 [457] wide throat. Modular channel sections shall be made of 0% water absorbent High Density Polyethylene (HDPE). Shall have a positive mechanical connection between channel sections that will not separate during the installation and shall mechanically lock into the concrete surround every 10 [254]. Channels shall weigh less than 5.05 lbs.[2.29kg] per linear foot, smooth bottom with a Manning's coefficient of .009 and neutral 0% built in slope. Channels shall have rebar clips standard to secure trench in its final location. Shall be provided with standard DC Ductile Iron Solid covers that lock down to frame. Zurn 23 [584] wide reveal Ductile Iron Cover conforming to ASTM specification A536-84, Grade 80-55-06. Ductile Iron cover is rated class C per the DIN EN1433 top load classifications. Supplied in 20 [508] nominal lengths and 2.625 [66] bearing depth. The 1/4 [6] thick Heavy-Duty Carbon Steel Frame Assembly conforms to ASTM specification A36 with 10 - 4 [102] long concrete anchors per 80 [2032]. Grate lockdown bars are to be integral to the frame. The frame is supplied with a powder coated finish. All welds must be performed by a certified welder per ASTM standard AWS D1.1. Frames Shall be produced in the U.S.A.

**PREFIX OPTIONS (Check/specify appropriate options)**

- ☐ Z Six-foot, Eight-inch High Density Polyethylene (HDPE) channel,  
Heavy Duty Frame with anchor studs \*

**SUFFIX OPTIONS (Check/specify appropriate options)****Outlet Adapters Add/Each**

- ☐ -E1 Closed End Cap  
☐ -E2 2 [51] No-Hub End Outlet (6 [152] min.)  
☐ -E4 4 [102] No-Hub End Outlet (8 [203] min.)  
☐ -E6 6 [152] No-Hub End Outlet (10 [254] min.)  
☐ -E8 8 [203] No-Hub End Outlet (12 [305] min.)  
☐ -E10 10 [254] No-Hub End Outlet (14 [356] min.)  
☐ -U4 4 [102] No-Hub Bottom Outlet  
☐ -U6 6 [152] No-Hub Bottom Outlet  
☐ -U8 8 [203] No-Hub Bottom Outlet  
☐ -U12 12 [305] No-Hub Bottom Outlet  
☐ -U15 15 [381] No-Hub Bottom Outlet

**Frame Options**

- ☐ -CBF Black Acid Resistant Coated Top Frame  
☐ -CWF White Acid Resistant Coated Top Frame

**Grate Options (Load Classifications are per DIN EN1433)**

- ☐ -DC Ductile Iron Solid Cover - Class C \*  
☐ -DCE Ductile Iron Solid Cover - Class E  
☐ -GC Galvanized Ductile Iron Solid Cover - Class C  
☐ -GCE Galvanized Ductile Iron Solid Cover - Class E

**Grate Options (Load Classifications are per DIN EN1433)**

- ☐ -DGC Ductile Iron Slotted Grate - Class C  
☐ -DGF Ductile Iron Slotted Grate - Class F  
☐ -GDC Galvanized Ductile Iron Grate - Class C  
☐ -GDF Galvanized Ductile Iron Grate - Class F  
☐ -HPD Heel-Proof Longitudinal Ductile Iron Grate - Class C

**Made in the U.S.A. (Load Classifications are per DIN EN1433)**

- ☐ -DGE-USA Ductile Iron Slotted Grate - Class E  
☐ -GDE-USA Galvanized Ductile Slotted Grate - Class E

**Miscellaneous Options**

- ☐ -DB Bottom Dome Strainer  
☐ -SSGL Stainless Steel Lockdown  
☐ -VP Vandal-Proof Lockdown

\*REGULARLY FURNISHED UNLESS OTHERWISE SPECIFIED

REV. C DATE: 07/03/12 C.N.NO. 124527

DWG. NO. 301358 PRODUCT NO. Z874-U-18-HD

ZURN INDUSTRIES, LLC ♦ SPECIFICATION DRAINAGE OPERATION ♦ 1801 Pittsburgh Ave. ♦ Erie, PA 16514

Phone: 814/455-0921 ♦ Fax: 814/454-7929 ♦ World Wide Web: www.zurn.com

In Canada: ZURN INDUSTRIES LIMITED ♦ 3544 Nashua Drive ♦ Mississauga, Ontario L4V1L2 ♦ Phone: 905/405-8272 Fax: 905/405-1292