



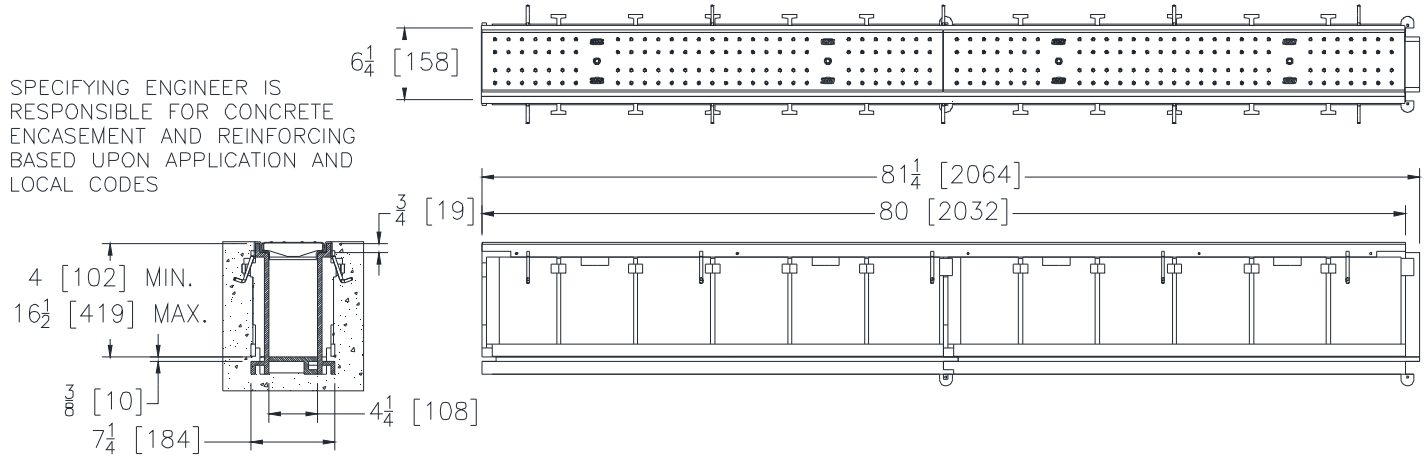
Z874-U-4-HDS

UTILITY TRENCH W/HEAVY DUTY STAINLESS STEEL
FRAME 4-1/4" THROAT WIDTH & COVER

SPECIFICATION SHEET

TAG _____

Dimensional Data (inches and [mm]) are Subject to Manufacturing Tolerances and Change Without Notice



ENGINEERING SPECIFICATION: Zurn Z874-U-4-HDS Channels shall be 80 [2032] long, 6.25 [159] wide reveal and have a 4.25 [108] wide throat. Modular channel sections shall be made of 0% water absorbent High Density Polyethylene (HDPE). Shall have a positive mechanical connection between channel sections that will not separate during the installation and shall mechanically lock into the concrete surround every 10 [254]. Channels shall weigh less than 2.31 lbs. [1.05kg] per linear foot, smooth bottom with a Manning's coefficient of 0.009 and neutral 0% built in slope. Shall be provided with standard RSC covers that lock down to frame. Zurn 5.375 [137] wide reveal Stainless Steel Cover conforming to ASTM specification A351, Grade CF8 (type 304), cast grate is rated class B per the DIN EN1433 top load classification. Supplied in 20 [508] nominal lengths and 0.75 [19] bearing depth. The 0.105 [2.66] thick Heavy-Duty Stainless Steel Frame Assembly conforms to ASTM specification A-240 (type 304). with 10 - 4 [102] long concrete anchors per 80 [2032]. Grate lockdown bars are to be integral to the frame. All welds must be performed by a certified welder per ASTM standard AWS D1.6. Frames Shall be produced in the U.S.A.

PREFIX OPTIONS (Check/specify appropriate options)

- ☐ Z Six-foot, Eight-inch High Density Polyethylene (HDPE) channel,
Stainless Steel Heavy Duty Frame with anchor studs*

SUFFIX OPTIONS (Check/specify appropriate options)

Outlet Adapters Add/Each

- ☐ -E1 Closed End Cap
☐ -E2 2 [51] No-Hub End Outlet (6 [152] min.)
☐ -E4 4 [102] No-Hub End Outlet (8 [203] min.)
☐ -E6 6 [152] No-Hub End Outlet (10 [254] min.)
☐ -U4 4 [102] No-Hub Bottom Outlet
☐ -U6 6 [152] No-Hub Bottom Outlet

Grate Options (Load Classifications are per DIN EN1433)

- ☐ -DCE Ductile Iron Solid Cover - Class E
☐ -RSCC Reinforced Stainless Steel Cover - Class C

Made in the U.S.A. (Load Classifications are per DIN EN1433)

- ☐ -SC-USA Stainless Steel Cover - Class A*

Miscellaneous Options

- ☐ -DB Bottom Dome Strainer
☐ -SSGL Stainless Steel Lockdown
☐ -VP Vandal-Proof Lockdown

* Regularly furnished unless otherwise specified.