

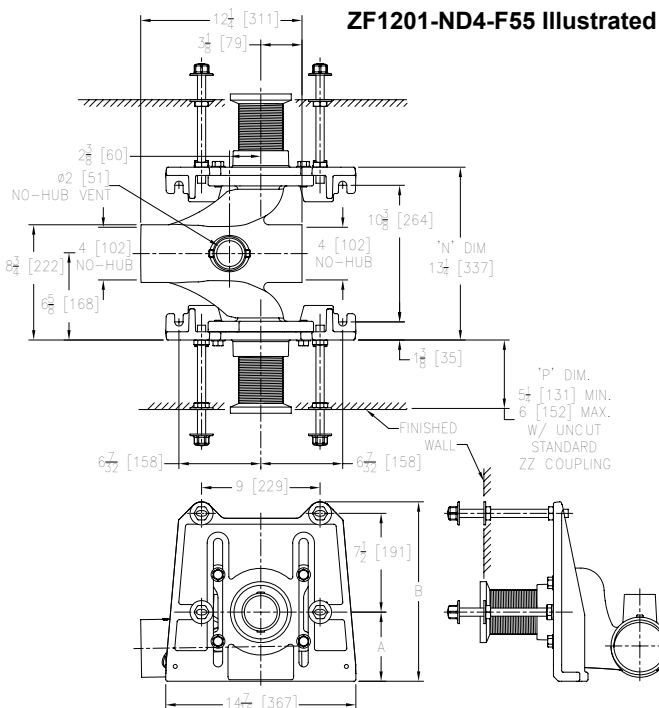


ZF1201-ND4-F
ONE-PIECE COMBINATION BACK-TO-BACK FOOT/FACEPLATE
EZCARRY® HORIZONTAL HIGH PERFORMANCE
SIPHON JET NO-HUB WATER CLOSET CARRIER SYSTEM

SPECIFICATION SHEET

TAG _____

Design and Dimensional Data (inches and [mm]) are Subject to Manufacturing Tolerances and Change Without Notice



| Product Number | Approx. Wt. lbs [kg] | Dimensions in Inches [mm] | |
|----------------|----------------------|---------------------------|--------------|
| | | A | B |
| ZF1201-ND4-F55 | 93 [42] | 5-1/2 [140] | 13-7/8 [352] |
| ZF1201-ND4-F75 | 100 [46] | 7-1/2 [191] | 15-7/8 [403] |

Note:

1. Cut ZZ coupling, Min. 'P' Dim. Obtainable=2 [51]. Cut EZ-Set™ Coupling, Min. 'P' Dim. Obtainable=4-1/4 [108] or 2-1/16 [52] for 12 [305] NPT.
2. Faceplate bolted to floor using min. 1/2 [13] dia. anchors.

ENGINEERING SPECIFICATION: ZURN ZF1201-ND4-F

EZCarry® One-piece combination floor mounted foot/faceplate horizontal siphon jet water closet carrier system, supplied for () rough-in height, with high performance Dura-Coated cast iron main fitting with hydro-mechanically optimized sweep, 4" [102 mm] no-hub connections and extended 2" [51 mm] vent. Corrosion resistant, adjustable 3" [76 mm] dia. X 6" [152 mm] couplings with integral test caps, designed to increase flow velocity and line carry, and labor saving "Neo-Seal" bonded gaskets optimize flow performance while reducing installation steps. Complete system includes one-piece combination foot/faceplates; heavy-duty 1/2" [13 mm] rear anchor tie downs; fixture bolts, trim and stud protectors. EZCarry® one-piece combination floor mounted foot/faceplate system complies with all applicable requirements of ASME A112.6.1M up to a 500 lbs [227 kg] maximum static load.

OPTIONS (Check/specify appropriate options)

___ **ZF1201-ND4-F55** 4 [102] No-Hub Back-to-Back Inlet (Double) with 5-1/2 [140] Non-Adjustable Rough-In Height
___ **ZF1201-ND4-F75** 4 [102] No-Hub Back-to-Back Inlet (Double) with 7-1/2 [191] Non-Adjustable Rough-In Height

PREFIXES

___ **ZF** D.C.C.I. System with Zurn ZZ Adjustable Coupling*
___ **ZQF** D.C.C.I. System with NPT Faceplate, Non-Adjustable Coupling

SUFFIXES

| | | | |
|----------------|--|----------------|--|
| ___ -A | Auxiliary Support Assembly (For 'P' Dim. Greater than 18 [457]) | ___ -F | Floor Mounted, Back Outlet Fixture Support |
| ___ -CC | Corrosion Resistant Cast Iron Coupling (2-1/4 to 12 [57 to 305]) | ___ -G | Galvanized Cast Iron |
| ___ -CE | EZ-Set™ Coupling (NPSM 6 [152] ,12 [305] or custom) (NPT 12 [305] or custom) | ___ -M | Auxiliary Foot Support (for 'P' Dim. 10 thru 18 [254 thru 457]) |
| ___ -CL | Custom Length Standard Coupling with Integral Test Cap (Specify Length 4, 8, 10, 12 [102, 203, 254, 305]) | ___ -VP | Vandal-Proof Trim |
| ___ -CS | 2-1/4 [57] Polymer Coupling with Integral Test Cap (ZZ Coupling Only) | ___ -45 | Finishing Frame for Siphon Jet System |
| | | ___ -50 | Flush Valve Supply Support for Water Closets |

* Regularly furnished unless otherwise specified.

⚠ **WARNING:** Cancer and Reproductive Harm - www.P65Warnings.ca.gov

⚠ **ADVERTENCIA:** Cáncer y daño reproductivo - www.P65Warnings.ca.gov

⚠ **AVERTISSEMENT:** Cancer et effets néfastes sur la reproduction - www.P65Warnings.ca.gov

Zurn Industries, LLC | Specification Drainage Operation
1801 Pittsburgh Avenue, Erie, PA 16502, Ph. 855.663.9876

In Canada | Zurn Industries Limited
7900 Goreway Drive, Unit 10, Brampton, Ontario L6T 5W6, Ph. 877.892.5216

www.zurn.com

Rev. D
Date: 12/30/22
C.N. No. 144897
Patent zurn.com/patents
Prod. | Dwg. No. ZF1201-ND4-F_