



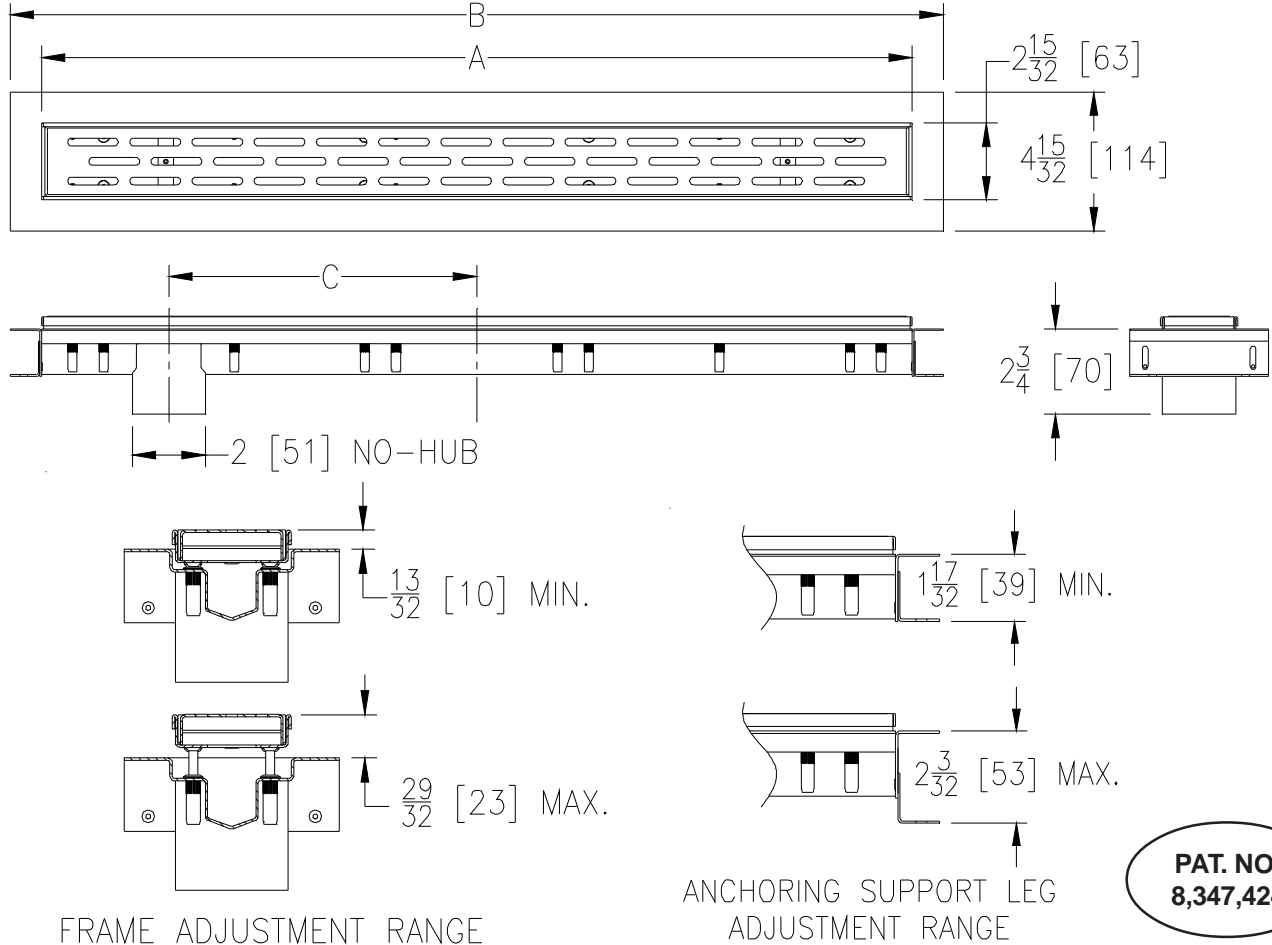
# ZS880-EO

## STAINLESS STEEL LINEAR SHOWER DRAIN W/ END BOTTOM OUTLET

SPECIFICATION SHEET

TAG \_\_\_\_\_

Dimensional data (inches and [mm]) are subject to manufacturing tolerances and change without notice.



**PAT. NO.**  
**8,347,424**

Product Designation	Dimensions In Inches			Approx. Wt. Lbs. [kg]	Grate Open Area Sq. In. [cm <sup>2</sup> ]
	A	B	C		
-28	28 [711]	30 [762]	9-29/32 [252]	5.4 [2.5]	15 [97]
-32	32 [813]	34 [864]	11-1/2 [292]	5.9 [2.7]	18 [116]
-36	36 [914]	38 [965]	13-3/32 [333]	6.4 [2.9]	20 [129]
-40	40 [1016]	42 [1069]	15-3/4 [400]	7.2 [3.3]	22 [142]
-48	48 [1219]	50 [1270]	19-7/32 [488]	8.4 [3.8]	27 [174]
-60	60 [1524]	62 [1575]	25-1/4 [641]	10.3 [4.7]	34 [219]
-72	72 [1829]	74 [1880]	31-3/16 [792]	12.4 [5.6]	41 [265]

**ENGINEERING SPECIFICATION: ZS880-EO**  
All Type 304 (CF8) Fabricated Stainless Steel Linear Shower Drain. Complete with vertically adjustable anchoring support legs, anti-ponding V-shaped channel with 2 [51] No-Hub end bottom outlet, adjustable secured leveling frame with built-in tile edge, and secured, light-duty, slotted heel-proof grate. Drain is designed for installation in a minimum 2 [51] concrete pour and can be adjusted to accommodate 1/4 [6] and 3/8 [10] finished tile thicknesses.

**OPTIONS** (Check/specify appropriate options)

**PREFIXES**

- \_\_\_ ZS All Type 304 (CF8) Stainless Steel\*
- \_\_\_ ZR All Type 304 (CF8) Stainless Steel w/ Oil-Rubbed Bronze Finish

**GRATE OPTIONS**

- \_\_\_ -BW Basket Weave Grate
- \_\_\_ -DB Decorative Block Grate
- \_\_\_ -SG Serenity Grate
- \_\_\_ -TG Tile In-Lay Grate
- \_\_\_ -WG Wave Grate

**SUFFIXES**

- \_\_\_ -2IP 2 [51] Female IP Threaded Outlet
- \_\_\_ -FS Outlet Filter Screen
- \_\_\_ -LB Lower Body with Membrane Clamp Collar
- \_\_\_ -SO Side Outlet (2 [51] No-Hub), Not available with -LB Option

\* Regularly furnished unless otherwise specified