

NOTES:

1. FOR GRAVITY APPLICATIONS ONLY.
2. ALL PROCEPTOR® UNITS ARE MANUFACTURED WITH FIBERGLASS REINFORCED PLASTICS. PHYSICAL CHARACTERISTICS AND THICKNESS: POLYESTER RESIN AND E GLASS. MINIMUM THICKNESS 1/4" WALL AND 3/8" TOP AND BOTTOM BOWLS.
3. ALL PROCEPTOR® UNITS ARE TO BE INSTALLED IN ACCORDANCE WITH THE MANUFACTURERS INSTALLATION INSTRUCTION.
4. STANDARD PIPE STUBS ARE PVC MATERIAL (SCHEDULE 40 ADAPTORS ADDED FOR ALL PROJECTS IN USA).
5. GMC/OMC/SMC 50 - 300 UNITS COME STANDARD WITH 4" INLET AND OUTLET (OTHER CUSTOM SIZES AVAILABLE AT EXTRA CHARGE).
6. EXTENSION COLLAR TO BE ORDERED TO MEET FINISHED GRADE, CUT ON SITE FOR FINAL ADJUSTMENT AND CAULKED WITH SIKAFLEX BY CONTRACTOR FOR WATERTIGHT SEAL.
7. COVERS AVAILABLE FOR H2O TRAFFIC LOADING, PEDESTRIAN LOADING OR ABOVE GROUND INSTALLATION.
8. CONSULT GREEN TURTLE™ FOR OTHER SIZES.
9. LIFETIME WARRANTY AGAINST LEAKS, AND STRUCTURAL FAILURE.

CONSULT LOCAL AUTHORITIES FOR
MINIMUM SIZE OF SEPARATORS

US PAT. # 5746912

Proceptor®

MANUFACTURER: ZURN GREEN TURTLE

PROCEPTOR MODEL NUMBER:
STANDARDS: PDI G-101 and ASME A112.14.3
LIQUID CAPACITY (WORKING VOLUME): XX US GAL.
RATED FLOW: 100 GPM
PRODUCT TYPE BY RATING: TYPE A
EFFICIENCY AT THE RATED CAPACITY: 90%
STD. MAX BURIAL DEPTH TO TOP OF TANK: 6 FT.
MAX VERTICAL LOAD: 1133 PSF
MONTH/YEAR OF MANUFACTURE:

DETAIL "A1"

PROCEPTOR NOMINAL TANK DIMENSIONS (INCHES)

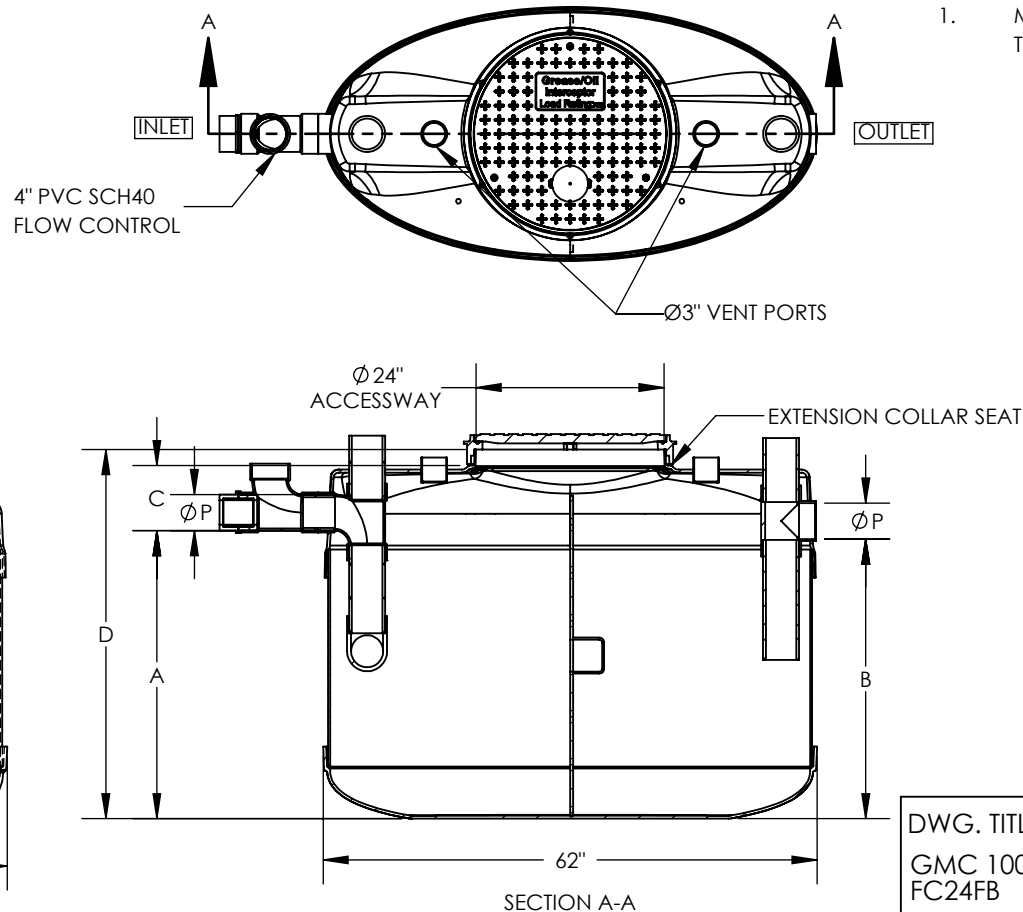
MODEL	VOLUME (US GAL) "XX"	GREASE CAPACITY (US GAL)	SOLIDS CAPACITY (US GAL)	PIPE SIZE (P)	INLET (A)	OUTLET (B)	BURIAL (C)	HEIGHT (D)
GMC 100 PDI	100	42	23	4 6	20 20	19 19	8 9	32 33
GMC 200 PDI	200	90	72	4 6	36 36	35 35	8 9	48 49
GMC 250 PDI	250	119	91	4 6	44 44	43 43	8 9	56 57
GMC 300 PDI	300	156	103	4 6	52 52	51 51	8 9	64 65

NOTES:

1. IF 6" PIPING IS ORDERED, INSTALLER IS RESPONSIBLE FOR INSTALLING THE PROVIDED 4" PVC FLOW CONTROL

PDI PLATE NOTE:

1. MODEL NO. ON PLATE TO MATCH MODEL NAME FROM TABLE EX. GMC 300 PDI



PDI PLATE

**MUST BE INSTALLED WITH FLOW CONTROL
DEVICE SUPPLIED WITH EACH UNIT**

PRODUCT TYPE BY RATING: TYPE A
EFFICIENCY AT THE RATED CAPACITY: 90%

DWG. TITLE:
GMC 100-300 S24M PDI
FC24FB

PROJECT:

SIZE A DRAWING NOT TO SCALE

Proceptor®
ZURN®

DWG #: 21-5471-S REV. 0