

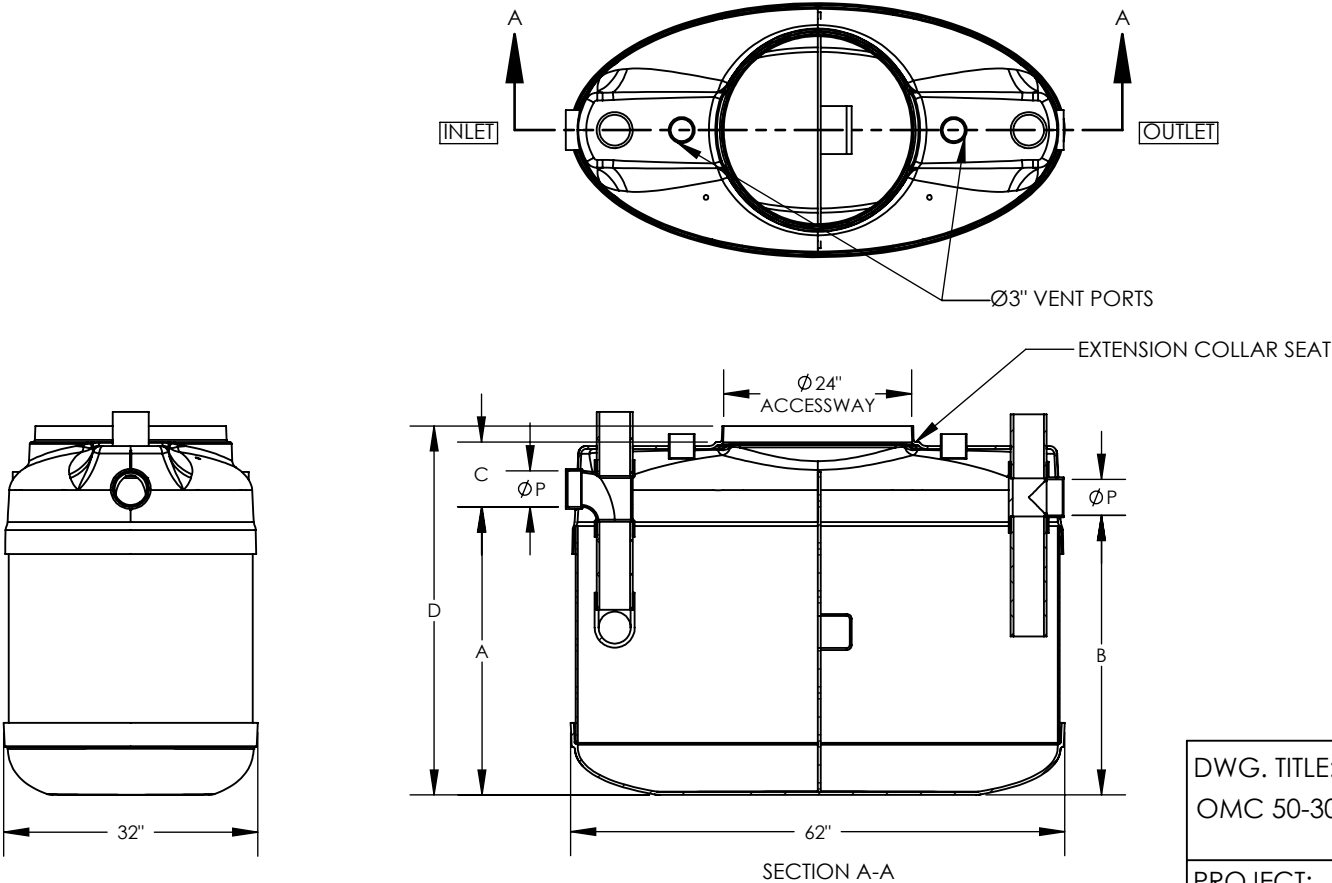
NOTES:

- 1. FOR GRAVITY APPLICATIONS ONLY.
- 2. ALL PROCEPTOR UNITS ARE MANUFACTURED WITH FIBERGLASS REINFORCED PLASTICS. PHYSICAL CHARACTERISTICS AND THICKNESS: POLYESTER RESIN AND E GLASS MINIMUM THICKNESS 1/4" WALL AND 3/8" TOP AND BOTTOM BOWLS.
- 3. ALL PROCEPTOR UNITS ARE TO BE INSTALLED IN ACCORDANCE WITH THE MANUFACTURER'S INSTALLATION INSTRUCTION.
- 4. STANDARD PIPING IS SCH. 40 PVC.
- 5. GMC/OMC 500 - 3000 UNITS COME STANDARD WITH 4" INLET AND OUTLET (OTHER PIPE SIZE OPTIONS AVAILABLE ON REQUEST).
- 6. EXTENSION COLLAR TO BE ORDERED TO MEET FINISHED GRADE, CUT ON SITE FOR FINAL ADJUSTMENT AND CAULKED WITH SIKAFLEX BY CONTRACTOR FOR WATERTIGHT SEAL.
- 7. COVERS AVAILABLE FOR H20 TRAFFIC LOADING, PEDESTRIAN LOADING OR ABOVE GROUND INSTALLATION.
- 8. CONSULT GREEN TURTLE FOR OTHER SIZES.
- 9. LIFETIME WARRANTY AGAINST LEAKS, AND STRUCTURAL FAILURE DUE TO MANUFACTURING DEFECTS.

CONSULT LOCAL AUTHORITIES FOR MINIMUM SIZE OF SEPARATORS

PROCEPTOR NOMINAL TANK DIMENSIONS (INCHES)

MODEL	VOLUME (US GAL)	OIL CAPACITY (US GAL)	SOLIDS CAPACITY (US GAL)	PIPE SIZE (P)	INLET (A)	OUTLET (B)	BURIAL (C)	HEIGHT (D)	SKU
OMC 50	50	18	17	4	12	11	8	24	11000000
OMC 100	100	42	23	4	20	19	8	32	11100000
				6	20	19	9	33	11100100
OMC 150	150	66	48	4	33	32	8	45	11200000
				6	33	32	9	46	11200100
OMC 200	200	90	72	4	36	35	8	48	11300000
				6	36	35	9	49	11300100
OMC 250	250	119	91	4	44	43	8	56	11400000
				6	44	43	9	57	11400100
OMC 300	300	156	103	4	52	51	8	64	11500000
				6	52	51	9	65	11500100



TANKS MAY NOT BE EXACTLY AS SHOWN

DWG. TITLE:
OMC 50-300 S24M

PROJECT:

