

Spec•Dec[®] Specified Decorative Systems

Offering a sleek, stylish look to your swimming pool, resort, water park, and residential drainage applications.



Systems are available from ¼" to 21" wide, with several grating options to meet your needs. Spec Dec systems are perfect for applications where drainage functionality compliments your surroundings.

Features and Benefits

- Easy to install Prom Deck drains with rotatable frames are ideal for use with paver systems, have decorative grating options, and are ADA/heel proof compliant
- Z880 trench drain system's mechanical interlocking connections save labor up to 75% and are available in five standard colors
- Perma-Trench[®] pre-sloped systems with radiused bottom offer several grating options and are available in longer, lightweight sections — saving installation time.
- Install high volume drainage faster with the Hi-Cap[®] Slotted Drainage System's lightweight sections — integral mechanical joint connections and built in rebar support for ease of leveling during installation
- Removable grates for easy maintenance and cleaning
- Made in the U.S.A. options available



Spec•Dec® Specified Decorative Systems

Area Drains



Z150-DT 14" Prom Deck with Bronze Decorative Grate



Z154-DT 11" Prom Deck with Bronze Decorative Grate



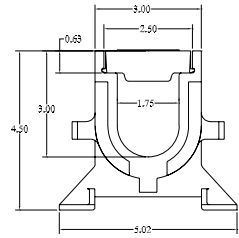
Z158-DT 8" Prom Deck with Bronze Decorative Grate



FD2283 10" Plastic Decorative Drain

Residential Drains

Z880 4' Length; Non-Sloped, Plastic
5 standard colors available.

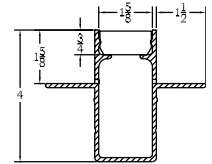


Wire Grate
Available in Aluminum or Stainless Steel.

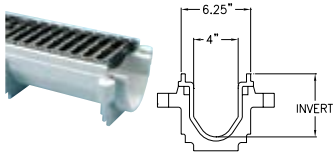


Bronze Grate

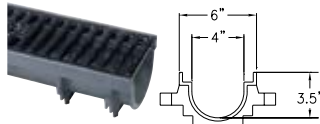
ZA880-156 4' Length, Non-Sloped, Aluminum



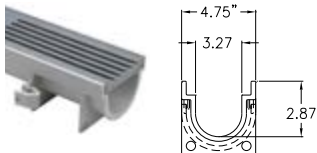
Trench Drains and Catch Basins



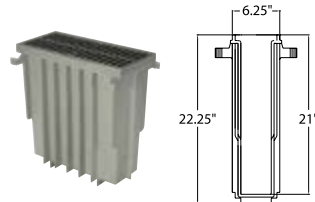
Z886 80" Length; Pre-Sloped



Z883 40" Length; Non-Sloped



Z884 40" Length; Non-Sloped



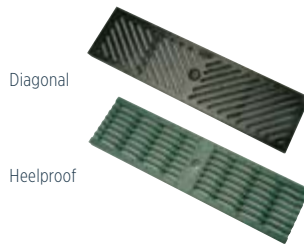
Z887 6" x 20" Catch Basin
12" x 24" and 24" x 24" also available

Zurn decorative grating systems are used with Z886, Z883, Z884, and Z887 6" x 20" systems. Available in bronze, stainless steel, and ductile iron. Plastic heel-proof grates are also available in a wide range of additional colors.



Decorative

Circular



Diagonal

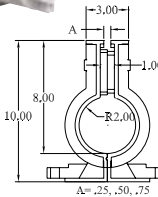
Heelproof

ADA/heelproof compliant available.

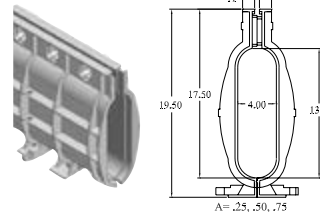
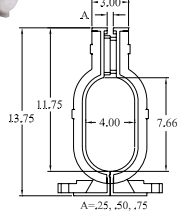
Slot Drains



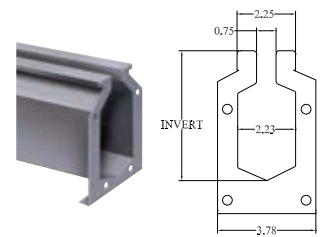
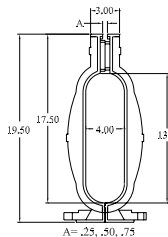
Z888-4 40" Length; Non-Sloped



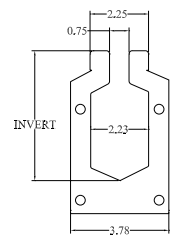
Z888-6 40" Length; Non-Sloped



Z888-8 40" Length; Non-Sloped



Z891 5' Length; Pre-Sloped, Stainless Steel



ZURN INDUSTRIES, LLC Linear Drainage Operation
1801 Pittsburgh Avenue, Erie, PA 16502, 855-663-9876

In Canada: **ZURN INDUSTRIES LIMITED** 7900 Goreway Drive, Unit 10, Brampton, Ontario L6T 5W6, 905-405-8272

Form No. 220-019, 2/17



1.855.ONE.ZURN | ZURN.COM