



Minimum and Maximum Dimensions for Z1903 Sani-Flor Receptor Stabilizer

Dimensional Data (inches and [mm]) are Subject to Manufacturing Tolerances and Change Without Notice

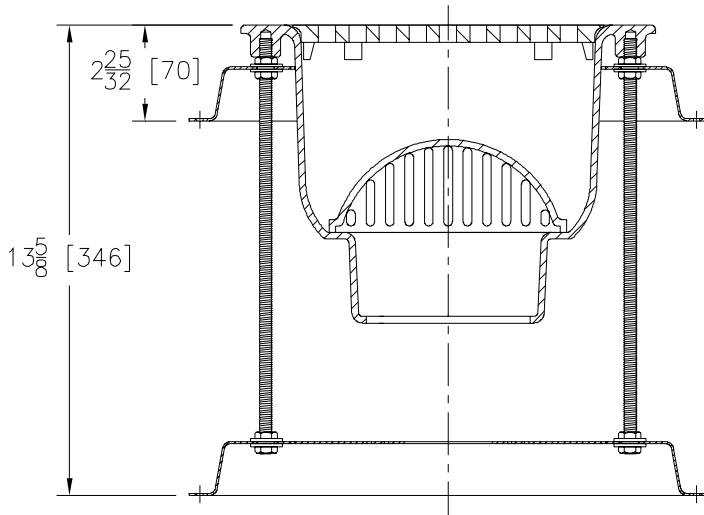


Diagram 1

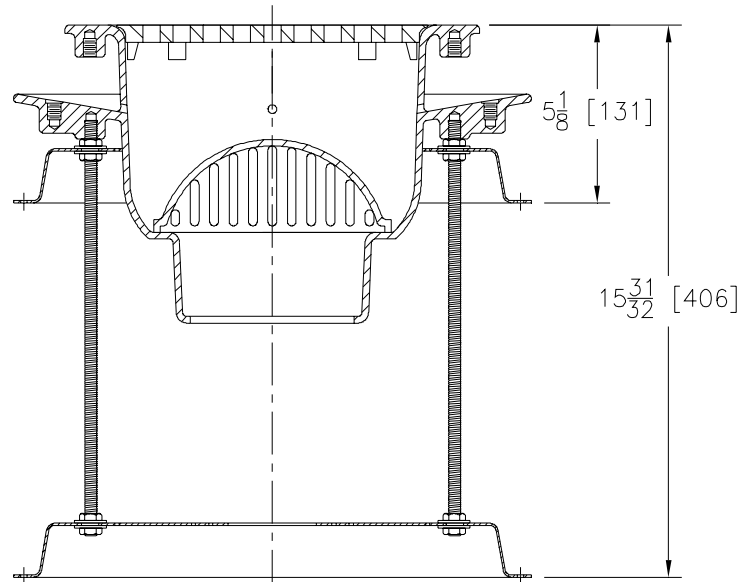


Diagram 2

Z1903 SANI-FLORECEPTOR STABILIZER

Z1900 12 x 12 Sani-Flor Receptor Drains are shown installed with Z1903 installation stabilizer.

- Diagram 1 shows minimum and maximum rough-in heights with standard hardware and studs provided.
- Diagram 2 shows minimum and maximum rough-in heights with receptor body including anchor flange.

Z1903 is provided with #16 gage galvanized steel and can accommodate 2", 3" or 4" pipe outlet. For narrow floor applications, the receptor body can be recessed into the stabilizer plate. Z1903 can also be used with Z1901 and Z1902 Sani-Flor Receptors.

Form # FS15

Date: 3/27/06

C.N. No. 94947

Rev.