

# Stainless Steel Drains

SSD0125 Customer Guide



ZURN.COM US 1.855.ONE.ZURN CANADA 1.877.892.5216

Effective January 1, 2025  
Replaces All Previous Price Lists

# INTRODUCTION

|   |   |
|---|---|
| TABLE OF CONTENTS – BY SECTION                    | 2 |
| ZURN STAINLESS STEEL DRAINS FOR FOOD AND BEVERAGE | 3 |

## TABLE OF CONTENTS – BY SECTION

### PRODUCT HIGHLIGHT

|  |   |
|--|---|
| ZURN STAINLESS STEEL DRAINS<br>FOR FOOD AND BEVERAGE | 3 |
|--|---|

### STAINLESS STEEL DRAINS

|   |    |
|---|----|
| <b>Z1800-12B</b> 12" DIAMETER ROUND INDUSTRIAL<br>FLOOR DRAIN                 | 6  |
| <b>Z1800-12S</b> 12" X 12" SQUARE INDUSTRIAL FLOOR DRAIN                      | 6  |
| <b>Z1805-12B</b> 12" DIAMETER INDUSTRIAL STANDARD<br>SANITARY FLOOR DRAIN     | 7  |
| <b>Z1805-12S</b> 12" X 12" SQUARE INDUSTRIAL STANDARD<br>SANITARY FLOOR DRAIN | 7  |
| <b>Z1830-12B</b> 12" DIAMETER INDUSTRIAL FLOOR DRAIN                          | 8  |
| <b>Z1830-12S</b> 12" X 12" SQUARE INDUSTRIAL FLOOR DRAIN                      | 8  |
| <b>Z1832</b> 6" DIAMETER ROUND DRAIN  | 9  |
| <b>Z1833</b> 8" DIAMETER ROUND DRAIN  | 9  |
| <b>Z1840-6B</b> 6" DIAMETER INDUSTRIAL FLOOR CLEANOUT                         | 10 |
| <b>Z1840-6S</b> 6" X 6" INDUSTRIAL FLOOR CLEANOUT                             | 10 |

|   |    |
|---|----|
| <b>Z1840-8B</b> 8" DIAMETER INDUSTRIAL FLOOR CLEANOUT     | 11 |
| <b>Z1840-8S</b> 8" X 8" INDUSTRIAL FLOOR CLEANOUT         | 11 |
| <b>Z1849</b> 12" X 12" SANI-FLO® RECEPTOR 4" SUMP DEPTH   | 12 |
| <b>Z1850</b> 12" X 12" SANI-FLO® RECEPTOR 6" SUMP DEPTH   | 13 |
| <b>Z1851</b> 12" X 12" SANI-FLO® RECEPTOR 8" SUMP DEPTH   | 13 |
| <b>Z1852</b> 12" X 12" SANI-FLO® RECEPTOR 10" SUMP DEPTH  | 14 |
| <b>Z1870</b> HUB DRAIN                                    | 15 |
| <b>Z1890</b> P-TRAP                                       | 16 |
| <b>ZS890</b> 6" WIDE SANI-FLO® TRENCH DRAIN SYSTEM        | 17 |
| <b>Z891</b> STAINLESS STEEL SLOTTED DRAINAGE SYSTEM       | 18 |
| <b>Z893</b> STAINLESS STEEL FLOOR RECEPTOR WITH BAR GRATE | 19 |
| <b>Z894</b> 24" WIDE TRENCH DRAIN SYSTEM                  | 20 |
| <b>ZS895</b> 12" WIDE SANI-FLO® TRENCH DRAIN SYSTEM       | 21 |
| <b>Z898</b> 18" WIDE TRENCH DRAIN SYSTEM                  | 22 |
| <b>Z897</b> STAINLESS STEEL CATCH BASIN                   | 23 |

### TECHNICAL INFORMATION

|   |    |
|---|----|
| TECHNICAL INFO – STAINLESS STEEL DRAINS<br>BUTT-WELD ENGINEERING DATA | 26 |
| TECHNICAL INFO – OUTLET PIPE CONNECTIONS                              | 27 |
| TECHNICAL INFO – TOP LOADING CLASSIFICATION                           | 28 |
| TECHNICAL INFO – EZ STOP LOCK   | 29 |
| TECHNICAL INFO – BUTTERFLY LOCKING VALVE                              | 29 |

**ZURN STAINLESS STEEL DRAINS FOR FOOD AND BEVERAGE**

# Easy Specification and Installation in Harsh Environments for More Than 100 Years

Standard Product, Custom Designed Systems and Superior Manufacturing

Your customers deserve a quality drain system that lasts. Zurn delivers reliable drainage solutions for long-lasting performance.

## Go for Appearance and Performance

Our comprehensive product portfolio coupled with our custom design and fabrication capabilities allow you to design a drainage system that meets the performance requirements and the aesthetic vision your customer demands.

## Specify Your System

Whether you are designing a new food processing facility, renovating an existing space, or retrofitting a current drainage system, Zurn is your single-source provider and trusted partner.



Scan or [click here](#) to see our complete portfolio of stainless steel drains



## Industry Leader of Standardized Product

- Sanitary, stainless steel design for easy maintenance to help avoid corrosion and audit inspection failure
- Versatility in configuration, flow rates, load ratings, strainers, grates and more

## Custom Designed Systems and Fabrication

The expert team at our Dallas, Texas, facility is ready to meet the needs of your unique drainage system. Custom systems are available in lengths up to 50' continuous runs.

## World-class Manufacturing

- Laser cut for precision and efficiency
- Robotic welding for consistency and performance
- Metal spinning to reduce bacteria-harboring angles, welds and crevices
- Bead blast finish for a smoother, more uniform look

# Zurn Stainless Steel Drains for Food and Beverage

## Z890 6" Wide Pre-sloped Trench Drainage System, Z891 Slot Drain and Z1870 Hub Drain

- Low-cost monitoring
- Aesthetic grate options available
- Contain, reroute and evacuate liquids to keep production area safe
- Modular trench systems designed for easy installation, load-bearing strength, high-flow capacity, chemical resistance and structural integrity



## Z1800 Industrial Floor Drain and Cleanout

- Seamless fabrication thoughtfully designed so that no water or sediment can deposit or accumulate
- Various sizes and grate configurations
- Angled body for sanitation
- No interior welds



## Z1752 Sani-Flor Receptor, Z1830 Deep Sump Sanitary Floor Drain and Z1805 Industrial Standard Sanitary Floor Drain

- Industrial sanitary floor drain with deep body, and heavy-duty slotted grate
- Anchor tabs that help stabilize during the pre-pour



## Z1840 Industrial Sanitary Cleanout

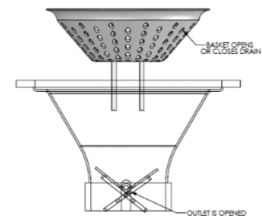


## Z1899 Industrial Double Containment Drain



## Accessories

| DESCRIPTION           |
|-----------------------|
| Trap Primer           |
| Butterfly Check Valve |
| EZ Stop Lock          |



Butterfly Check Valve



EZ Stop Lock

# STAINLESS STEEL DRAINS

|  |           |
|--|-----------|
| <b>Z1800-12B</b> 12" DIAMETER ROUND INDUSTRIAL FLOOR DRAIN                 | <b>6</b>  |
| <b>Z1800-12S</b> 12" X 12" SQUARE INDUSTRIAL FLOOR DRAIN                   | <b>6</b>  |
| <b>Z1805-12B</b> 12" DIAMETER INDUSTRIAL STANDARD SANITARY FLOOR DRAIN     | <b>7</b>  |
| <b>Z1805-12S</b> 12" X 12" SQUARE INDUSTRIAL STANDARD SANITARY FLOOR DRAIN | <b>7</b>  |
| <b>Z1830-12B</b> 12" DIAMETER INDUSTRIAL FLOOR DRAIN                       | <b>8</b>  |
| <b>Z1830-12S</b> 12" X 12" SQUARE INDUSTRIAL FLOOR DRAIN                   | <b>8</b>  |
| <b>Z1832</b> 6" DIAMETER ROUND DRAIN                                       | <b>9</b>  |
| <b>Z1833</b> 8" DIAMETER ROUND DRAIN                                       | <b>9</b>  |
| <b>Z1840-6B</b> 6" DIAMETER INDUSTRIAL FLOOR CLEANOUT                      | <b>10</b> |
| <b>Z1840-6S</b> 6" X 6" INDUSTRIAL FLOOR CLEANOUT                          | <b>10</b> |
| <b>Z1840-8B</b> 8" DIAMETER INDUSTRIAL FLOOR CLEANOUT                      | <b>11</b> |
| <b>Z1840-8S</b> 8" X 8" INDUSTRIAL FLOOR CLEANOUT                          | <b>11</b> |
| <b>Z1849</b> 12" X 12" SANI-FLO® RECEPTOR 4" SUMP DEPTH                    | <b>12</b> |
| <b>Z1850</b> 12" X 12" SANI-FLO® RECEPTOR 6" SUMP DEPTH                    | <b>13</b> |
| <b>Z1851</b> 12" X 12" SANI-FLO® RECEPTOR 8" SUMP DEPTH                    | <b>13</b> |
| <b>Z1852</b> 12" X 12" SANI-FLO® RECEPTOR 10" SUMP DEPTH                   | <b>14</b> |
| <b>Z1870</b> HUB DRAIN   | <b>15</b> |
| <b>Z1890</b> P-TRAP  | <b>16</b> |
| <b>ZS890</b> 6" WIDE SANI-FLO® TRENCH DRAIN SYSTEM                         | <b>17</b> |
| <b>Z891</b> STAINLESS STEEL SLOTTED DRAINAGE SYSTEM                        | <b>18</b> |
| <b>Z893</b> STAINLESS STEEL FLOOR RECEPTOR WITH BAR GRATE                  | <b>19</b> |
| <b>Z894</b> 24" WIDE TRENCH DRAIN SYSTEM                                   | <b>20</b> |
| <b>ZS895</b> 12" WIDE SANI-FLO® TRENCH DRAIN SYSTEM                        | <b>21</b> |
| <b>Z898</b> 18" WIDE TRENCH DRAIN SYSTEM                                   | <b>22</b> |
| <b>Z897</b> STAINLESS STEEL CATCH BASIN                                    | <b>23</b> |

## Z1800-12B 12" DIAMETER ROUND INDUSTRIAL FLOOR DRAIN

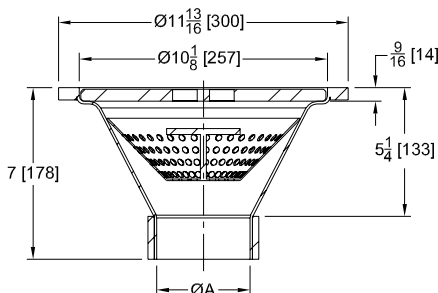
[SDcSN-R42120] **NEW**



### ENGINEERING SPECIFICATION

12 [305] Diameter x 5-1/4 [133] Deep, 12 gauge, type 304 stainless steel, round industrial sanitary floor drain features loose set heavy-duty slotted grate (1/2 [13] thick plate) with finger holes, 9/16 [14] top frame, perforated removable sediment bucket with lift handle, pre-pour stabilizing anchor tabs, and bead blasted finish. Approximate weight 18 lbs [8 kg].

| A Pipe Size<br>inches [mm]       | Approximate Weight<br>lb [kg] | Grate Open Area<br>sq in [cm <sup>2</sup> ] |
|----------------------------------|-------------------------------|---|
| Butt-Weld / No-Hub / Threaded    |                               |   |
| 2 [51], 3 [76], 4 [102], 6 [152] | 18 [8]                        | 19.2 [124]                                  |



Three anchor tabs spaced 120 degrees apart not represented in cross section view.

| PREFIXES   | DESCRIPTION   | A PIPE SIZE           | LIST PRICE |
|--|---|-----------------------|------------|
| Z1800-12B*   | Type 304 (CF8) Stainless Steel*                                 | 2" , 3" , 4"          | 1,628.00   |
|  |   | 6"                    | 1,691.00   |
| ZM1800-12B   | Type 316 (CF8M) Stainless Steel                                 | 2" , 3" , 4"          | 1,953.00   |
|  |   | 6"                    | 2,029.00   |
| OUTLETS (SPECIFY PIPE SIZE IN INCHES AND TYPE OF OUTLET) |   |                       |            |
| OUTLET TYPE  |   | PIPE SIZE/OUTLET TYPE | ADD        |
| BW   | Butt-Weld (Schedule 40)   | 2BW, 3BW, 4BW, 6BW    | N/C        |
| IP   | Threaded  | 2IP, 3IP, 4IP, 6IP    | 498.00     |
| NH   | No-Hub (Schedule 10)  | 2NH, 3NH, 4NH, 6NH    | N/C        |
| GRATE OPTIONS  |   |                       | ADD        |
| -2   | 1/2 Grate   |                       | N/C        |
| -3   | 3/4 Grate   |                       | N/C        |
| -H3  | Heavy Duty Perimeter Gap - 1/2" Plate                           |                       | 282.00     |
| -H5  | Heavy Duty Slotted Grate - 1/2" Plate with Finger Holes         |                       | 282.00     |
| SUFFIXES   |   |                       | ADD        |
| -BF  | Butterfly Lock Sediment Basket<br>(Only available in 4" Outlet) |                       | 768.00     |
| -K   | Anchor Flange   |                       | 277.00     |
| -KC  | Anchor Flange with Seepage Holes and Clamp Collar               |                       | 993.00     |
| -MG  | EZLock Magnetic Lock System                                     |                       | 368.00     |
| -P   | 1/2" Trap Primer Connection                                     |                       | 94.00      |
| -VP  | Vandal Proof Secured Top  |                       | 301.00     |

## Z1800-12S 12" X 12" SQUARE INDUSTRIAL FLOOR DRAIN

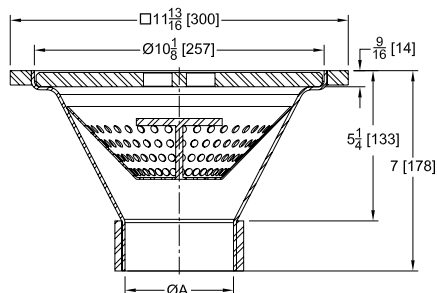
[SDcSN-Q42120] **NEW**



### ENGINEERING SPECIFICATION

12 x 12 x 7 [305 x 305 x 178] Deep, 12 gauge, type 304 stainless steel, square industrial sanitary floor drain features loose set heavy-duty slotted grate (1/2 [13] thick plate) with finger holes, 9/16 [14] top frame, perforated removable sediment bucket with lift handle, pre-pour stabilizing anchor tabs, and bead blasted finish. Approximate weight 18 lbs [8 kg].

| A Pipe Size<br>inches [mm]       | Approximate Weight<br>lb [kg] | Grate Open Area<br>sq in [cm <sup>2</sup> ] |
|----------------------------------|-------------------------------|---|
| Butt-Weld / No-Hub / Threaded    |                               |   |
| 2 [51], 3 [76], 4 [102], 6 [152] | 18 [8]                        | 19.2 [124]                                  |



Three anchor tabs spaced 120 degrees apart not represented in cross section view.

| PREFIXES   | DESCRIPTION   | A PIPE SIZE           | LIST PRICE |
|--|---|-----------------------|------------|
| Z1800-12S*   | Type 304 (CF8) Stainless Steel*                                 | 2", 3", 4"            | 1,628.00   |
|  |   | 6"                    | 1,691.00   |
| ZM1800-12S   | Type 316 (CF8M) Stainless Steel                                 | 2", 3", 4"            | 1,953.00   |
|  |   | 6"                    | 2,029.00   |
| OUTLETS (SPECIFY PIPE SIZE IN INCHES AND TYPE OF OUTLET) |   |                       |            |
| OUTLET TYPE  |   | PIPE SIZE/OUTLET TYPE | ADD        |
| BW   | Butt-Weld (Schedule 40)   | 2BW, 3BW, 4BW, 6BW    | N/C        |
| IP   | Threaded  | 2IP, 3IP, 4IP, 6IP    | 498.00     |
| NH   | No-Hub (Schedule 10)  | 2NH, 3NH, 4NH, 6NH    | N/C        |
| GRATE OPTIONS  |   |                       | ADD        |
| -2   | 1/2 Grate   |                       | N/C        |
| -3   | 3/4 Grate   |                       | N/C        |
| -H3  | Heavy Duty Perimeter Gap - 1/2" Plate                           |                       | 282.00     |
| -H5  | Heavy Duty Slotted Grate - 1/2" Plate with Finger Holes         |                       | 282.00     |
| SUFFIXES   |   |                       | ADD        |
| -BF  | Butterfly Lock Sediment Basket<br>(Only available in 4" Outlet) |                       | 768.00     |
| -K   | Anchor Flange   |                       | 277.00     |
| -KC  | Anchor Flange with Seepage Holes and Clamp Collar               |                       | 993.00     |
| -MG  | EZLock Magnetic Lock System                                     |                       | 368.00     |
| -P   | 1/2" Trap Primer Connection                                     |                       | 94.00      |
| -VP  | Vandal Proof Secured Top  |                       | 301.00     |

## Z1805-12B 12" DIAMETER INDUSTRIAL STANDARD SANITARY FLOOR DRAIN

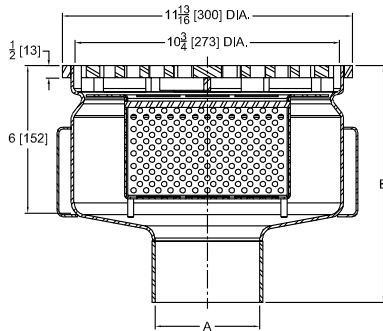
NEW



### ENGINEERING SPECIFICATION

12 [305] Diameter x 6 [152] Deep, 12 gauge, type 304 stainless steel industrial sanitary drain featuring 100% spun drain body construction, sloped bottom design and minimum continuous welds. Provided with perforated removable sediment bucket with lift handle, extra heavy-duty slotted grate, pre-pour stabilizing anchor tabs, and smooth bead blasted finish. Drain meets US FDA standards for corrosion resistance.

| A Pipe Size<br>inches [mm]    | Approximate Weight<br>lb [kg] | Grate Open Area<br>sq in [cm <sup>2</sup> ] |
|-------------------------------|-------------------------------|---|
| Butt-Weld / No-Hub / Threaded |                               |   |
| 3 [76], 4 [102], 6 [152]      | 18 [8]                        | 19.2 [124]                                  |



| PREFIXES    | DESCRIPTION                     | A PIPE SIZE | LIST PRICE |
|-------------|---------------------------------|-------------|------------|
| Z1805-12B*  | Type 304 (CF8) Stainless Steel  | 3", 4"      | 2,310.00   |
|             |                                 | 6"          | 2,373.00   |
| ZM1805-12B* | Type 316 (CF8M) Stainless Steel | 3", 4"      | 2,772.00   |
|             |                                 | 6"          | 2,848.00   |

| OUTLETS (SPECIFY PIPE SIZE IN INCHES AND TYPE OF OUTLET) |                         |                       |        |
|--|-------------------------|-----------------------|--------|
| OUTLET TYPE  |                         | PIPE SIZE/OUTLET TYPE | ADD    |
| BW   | Butt-Weld (Schedule 40) | 3BW, 4BW, 6BW         | N/C    |
| NH   | No-Hub (Schedule 10)    | 3NH, 4NH, 6NH         | N/C    |
| IP   | Threaded                | 3IP, 4IP, 6IP         | 498.00 |

| GRATE OPTIONS |  |        |
|---------------|--|--------|
|               |  | ADD    |
| -H3           | Special Duty Perimeter Gap Grate (1[25] Grate Seat)                | N/C    |
| -H5*          | Extra Heavy Duty Slotted Grate - 1/2 [13] Plate with Finger Holes* | N/C    |
| -H9           | Medium Duty Perforated Grate                                       | 282.00 |

| SUFFIXES |   |        |
|----------|---|--------|
|          |   | ADD    |
| -K       | Anchor Flange   | 277.00 |
| -KC      | Anchor Flange with Seepage Holes and Clamp Collar       | 993.00 |
| -MG      | EZ Lock Magnetic System With Secured Secondary Strainer | 368.00 |
| -P       | 3/4 [19] Trap Primer Connection                         | 94.00  |
| -VP      | Vandal Proof Secured Top                                | 301.00 |

## Z1805-12S 12" X 12" SQUARE INDUSTRIAL STANDARD SANITARY FLOOR DRAIN

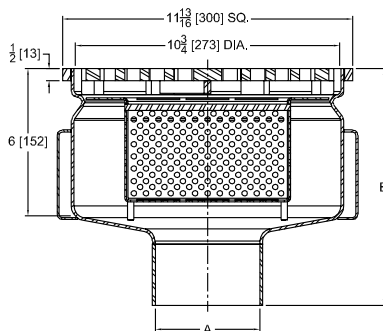
NEW



### ENGINEERING SPECIFICATION

12 [305] Square x 6 [152] Deep, 12 gauge, type 304 stainless steel industrial sanitary drain featuring 100% spun drain body construction, sloped bottom design and minimum continuous welds. Provided with perforated removable sediment bucket with lift handle, extra heavy-duty slotted grate, pre-pour stabilizing anchor tabs, and smooth bead blasted finish. Drain meets US FDA standards for corrosion resistance.

| A Pipe Size<br>inches [mm]    | Approximate Weight<br>lb [kg] | Grate Open Area<br>sq in [cm <sup>2</sup> ] |
|-------------------------------|-------------------------------|---|
| Butt-Weld / No-Hub / Threaded |                               |   |
| 3 [76], 4 [102], 6 [152]      | 18 [8]                        | 19.2 [124]                                  |



| PREFIXES    | DESCRIPTION                     | A PIPE SIZE | LIST PRICE |
|-------------|---------------------------------|-------------|------------|
| Z1805-12S*  | Type 304 (CF8) Stainless Steel  | 3", 4"      | 2,310.00   |
|             |                                 | 6"          | 2,373.00   |
| ZM1805-12S* | Type 316 (CF8M) Stainless Steel | 3", 4"      | 2,772.00   |
|             |                                 | 6"          | 2,848.00   |

| OUTLETS (SPECIFY PIPE SIZE IN INCHES AND TYPE OF OUTLET) |                         |                       |        |
|--|-------------------------|-----------------------|--------|
| OUTLET TYPE  |                         | PIPE SIZE/OUTLET TYPE | ADD    |
| BW   | Butt-Weld (Schedule 40) | 3BW, 4BW, 6BW         | N/C    |
| NH   | No-Hub (Schedule 10)    | 3NH, 4NH, 6NH         | N/C    |
| IP   | Threaded                | 3IP, 4IP, 6IP         | 498.00 |

| GRATE OPTIONS |  |     |
|---------------|--|-----|
|               |  | ADD |
| -H3           | Special Duty Perimeter Gap Grate (1-1/16 [27] Grate Seat)          | N/C |
| -H5*          | Extra Heavy Duty Slotted Grate - 1/2 [13] Plate with Finger Holes* | N/C |
| -H9           | Medium Duty Perforated Grate                                       | N/C |

| SUFFIXES |   |        |
|----------|---|--------|
|          |   | ADD    |
| -K       | Anchor Flange   | 277.00 |
| -KC      | Anchor Flange with Seepage Holes and Clamp Collar       | 993.00 |
| -MG      | EZ Lock Magnetic System With Secured Secondary Strainer | 368.00 |
| -P       | 3/4 [19] Trap Primer Connection                         | 94.00  |
| -VP      | Vandal Proof Secured Top                                | 301.00 |

\*Regularly furnished unless otherwise specified.

⌚ This symbol denotes a product that is engineered to reduce installation and rework time.

For additional product information, please visit [www.zurn.com](http://www.zurn.com)  
Patent [zurn.com/patents](http://zurn.com/patents)

## Z1830-12B 12" DIAMETER INDUSTRIAL FLOOR DRAIN

[SDcDS-R42120]

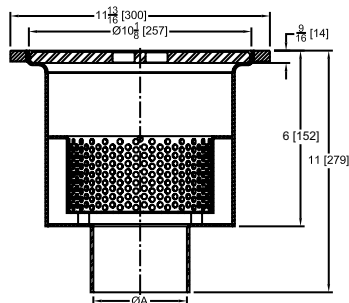
**NEW**



### ENGINEERING SPECIFICATION

12 [305] Diameter X 8 [203] Deep, 12 gauge, type 304 stainless steel, round industrial sanitary floor drain features loose set heavy-duty slotted grate (1/2 [13] thick plate) with finger holes, 9/16 [14] top frame, perforated removable sediment bucket with lift handle, pre-pour stabilizing anchor tabs, and bead blasted finish. Approximate weight 25 lbs [11 kg].

| A Pipe Size inches [mm]          | Approximate Weight lb [kg] | Grate Open Area sq in [cm <sup>2</sup> ] |
|----------------------------------|----------------------------|--|
| Butt-Weld / No-Hub / Threaded    |                            |  |
| 2 [51], 3 [76], 4 [102], 6 [152] | 25 [11]                    | 15 [97]                                  |



Three anchor tabs spaced 120 degrees apart not represented in cross section view.

| PREFIXES   | DESCRIPTION   | A PIPE SIZE           | LIST PRICE |
|--|---|-----------------------|------------|
| Z1830-12B*   | Type 304 (CF8) Stainless Steel*                                   | 2", 3", 4"            | 1,880.00   |
|  |   | 6"                    | 1,995.00   |
| ZM1830-12B   | Type 316 (CF8M) Stainless Steel                                   | 2", 3", 4"            | 2,256.00   |
|  |   | 6"                    | 2,394.00   |
| OUTLETS (SPECIFY PIPE SIZE IN INCHES AND TYPE OF OUTLET) |   |                       |            |
| OUTLET TYPE  |   | PIPE SIZE/OUTLET TYPE | ADD        |
| BW   | Butt-Weld (Schedule 40)   | 2BW, 3BW, 4BW, 6BW    | N/C        |
| IP   | Threaded  | 2IP, 3IP, 4IP, 6IP    | 498.00     |
| NH   | No-Hub (Schedule 10)  | 2NH, 3NH, 4NH, 6NH    | N/C        |
| GRATE OPTIONS  |   |                       | ADD        |
| -H3  | Heavy-Duty Perimeter Gap -1/2 [13] Plate (1-1/16 [27] Grate Seat) |                       | 282.00     |
| -H5  | Heavy-Duty Slotted Grate - 1/2 [13] Plate with Finger Holes*      |                       | 282.00     |
| -2   | 1/2 Grate   |                       | N/C        |
| -3   | 3/4 Grate   |                       | N/C        |
| SUFFIXES   |   |                       | ADD        |
| -B   | Bell Trap   |                       | 283.00     |
| -BF  | Butterfly Lock Sediment Basket (Only available in 4" Outlet)      |                       | 768.00     |
| -K   | Anchor Flange   |                       | 277.00     |
| -KC  | Anchor Flange with Seepage Holes and Clamp Collar                 |                       | 993.00     |
| -MG  | EZLock Magnetic Lock System                                       |                       | 368.00     |
| -P   | 1/2" Trap Primer Connection                                       |                       | 94.00      |

## Z1830-12S 12" X 12" SQUARE INDUSTRIAL FLOOR DRAIN

[SDcDS-Q42120]

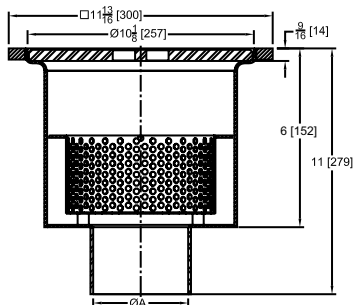
**NEW**



### ENGINEERING SPECIFICATION

12 x 12 x 8 [305 x 305 x 203] Deep, 12 gauge, type 304 stainless steel, square industrial sanitary floor drain features loose set heavy-duty slotted grate (1/2 [13] thick plate) with finger holes, 9/16 [14] top frame, perforated removable sediment bucket with lift handle, pre-pour stabilizing anchor tabs, and bead blasted finish. Approximate weight 30 lbs [14 kg].

| A Pipe Size inches [mm]          | Approximate Weight lb [kg] | Grate Open Area sq in [cm <sup>2</sup> ] |
|----------------------------------|----------------------------|--|
| Butt-Weld / No-Hub / Threaded    |                            |  |
| 2 [51], 3 [76], 4 [102], 6 [152] | 30 [14]                    | 19.2 [124]                               |



Three anchor tabs spaced 120 degrees apart not represented in cross section view.

| PREFIXES   | DESCRIPTION   | A PIPE SIZE           | LIST PRICE |
|--|---|-----------------------|------------|
| Z1830-12S*   | Type 304 (CF8) Stainless Steel*                                   | 2", 3", 4"            | 1,880.00   |
|  |   | 6"                    | 1,995.00   |
| ZM1830-12S   | Type 316 (CF8M) Stainless Steel                                   | 2", 3", 4"            | 2,256.00   |
|  |   | 6"                    | 2,394.00   |
| OUTLETS (SPECIFY PIPE SIZE IN INCHES AND TYPE OF OUTLET) |   |                       |            |
| OUTLET TYPE  |   | PIPE SIZE/OUTLET TYPE | ADD        |
| BW   | Butt-Weld (Schedule 40)   | 2BW, 3BW, 4BW, 6BW    | N/C        |
| IP   | Threaded  | 2IP, 3IP, 4IP, 6IP    | 498.00     |
| NH   | No-Hub (Schedule 10)  | 2BW, 3NH, 4NH, 6NH    | N/C        |
| GRATE OPTIONS  |   |                       | ADD        |
| -H3  | Heavy-Duty Perimeter Gap -1/2 [13] Plate (1-1/16 [27] Grate Seat) |                       | 282.00     |
| -H5  | Heavy-Duty Slotted Grate - 1/2 [13] Plate with Finger Holes*      |                       | 282.00     |
| -2   | 1/2 Grate   |                       | N/C        |
| -3   | 3/4 Grate   |                       | N/C        |
| SUFFIXES   |   |                       | ADD        |
| -B   | Bell Trap   |                       | 283.00     |
| -BF  | Butterfly Lock Sediment Basket (Only available in 4" Outlet)      |                       | 768.00     |
| -K   | Anchor Flange   |                       | 277.00     |
| -KC  | Anchor Flange with Seepage Holes and Clamp Collar                 |                       | 993.00     |
| -MG  | EZLock Magnetic Lock System                                       |                       | 368.00     |
| -P   | 1/2" Trap Primer Connection                                       |                       | 94.00      |

## Z1832 6" DIAMETER ROUND DRAIN

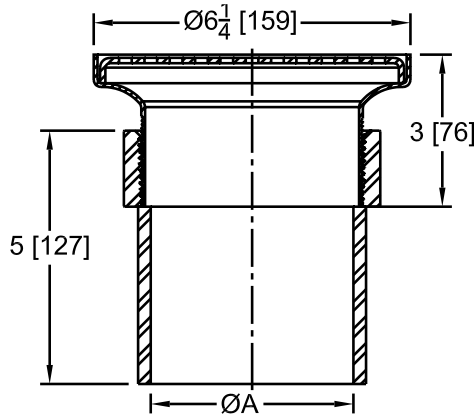
[SDcAD-R42060] **NEW**



### ENGINEERING SPECIFICATION

Zurn Z1832 6-1/4" [159] Diameter 3" Deep, 12 gauge, type 304 stainless steel, round drain features light duty perforated grates, and bead blasted finish. Replaces 1786.

| Dimensions in inches [mm] | Approximate Weight<br>lb [kg] |
|---------------------------|-------------------------------|
| A                         |                               |
| <b>No-Hub (NH)</b>        |                               |
| 2NH, 3NH, 4NH             | 6 [3]                         |



Note: Shown with -A Adjustable Threaded Outlet.

| PREFIXES  | DESCRIPTION   | A PIPE SIZE | LIST PRICE    |
|---|---|-------------|---------------|
| <b>Z1832*</b>   | Type 304 (CF8) Stainless Steel                          | 3", 4"      | <b>567.00</b> |
| <b>ZM1832</b>   | Type 316 (CF8M) Stainless Steel                         | 3", 4"      | <b>681.00</b> |
| <b>OUTLETS (SPECIFY PIPE SIZE IN INCHES AND TYPE OF OUTLET)</b> |   |             |               |
| OUTLET TYPE   | PIPE SIZE/<br>OUTLET TYPE                               | ADD         |               |
| <b>NH</b>   | No-Hub (Schedule 10)                                    | 3NH, 4NH    | <b>N/C</b>    |
| <b>GRATE OPTIONS</b>  |   |             |               |
| <b>-H3</b>  | Heavy Duty Perimeter Gap - 1/2" Plate                   |             | <b>282.00</b> |
| <b>-H5</b>  | Heavy Duty Slotted Grate - 1/2" Plate with Finger Holes |             | <b>282.00</b> |
| <b>SUFFIXES</b>   |   |             |               |
| <b>-A</b>   | Adjustable Threaded Outlet                              |             | <b>550.00</b> |
| <b>-K</b>   | Anchor Flange   |             | <b>213.00</b> |
| <b>-KC</b>  | Anchor Flange with Seepage Holes and Clamp Collar       |             | <b>277.00</b> |
| <b>-P</b>   | 1/2" Trap Primer Connection                             |             | <b>94.00</b>  |

## Z1833 8" DIAMETER ROUND DRAIN

[SSDcAD-R42080] **NEW**

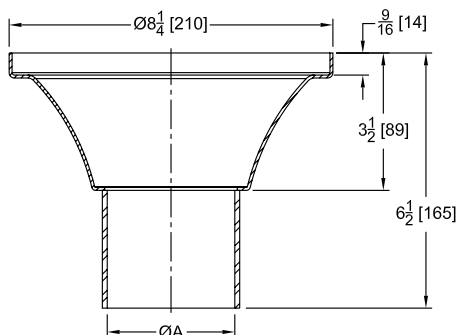


Shown with optional -H5 grate.  
Perforated grate is standard.

### ENGINEERING SPECIFICATION

Zurn Z1833 8-1/4" [210] Diameter 3-1/2" [89] Deep, 12 gauge, type 304 stainless steel, round drain features light duty perforated grates, and bead blasted finish. Drain manufactured without any inside seams or welds to eliminate hidden areas for bacteria growth. Replaces Z1788.

| Dimensions in inches [mm] | Approximate Weight<br>lb [kg] |
|---------------------------|-------------------------------|
| A                         |                               |
| <b>No-Hub (NH)</b>        |                               |
| 2NH, 3NH, 4NH             | 6 [3]                         |
| <b>Butt-Weld (BW)</b>     |                               |
| 2BW, 3BW, 4BW             | 6 [3]                         |



| PREFIXES  | DESCRIPTION   | A PIPE SIZE        | LIST PRICE      |
|---|---|--------------------|-----------------|
| <b>Z1833*</b>   | Type 304 (CF8) Stainless Steel                          | 2", 3", 4", 6"     | <b>840.00</b>   |
| <b>ZM1833</b>   | Type 316 (CF8M) Stainless Steel                         | 2", 3", 4", 6"     | <b>1,008.00</b> |
| <b>OUTLETS (SPECIFY PIPE SIZE IN INCHES AND TYPE OF OUTLET)</b> |   |                    |                 |
| OUTLET TYPE   | PIPE SIZE/OUTLET TYPE                                   | ADD                |                 |
| <b>NH</b>   | No-Hub (Schedule 10)                                    | 2NH, 3NH, 4NH, 6NH | <b>N/C</b>      |
| <b>BW</b>   | Butt-Weld (Schedule 40)                                 | 2BW, 3BW, 4BW, 6BW | <b>N/C</b>      |
| <b>GRATE OPTIONS</b>  |   |                    |                 |
| <b>-2</b>   | 1/2 Grate   |                    | <b>N/C</b>      |
| <b>-3</b>   | 3/4 Grate   |                    | <b>N/C</b>      |
| <b>-H3</b>  | Heavy Duty Perimeter Gap - 1/2" Plate                   |                    | <b>282.00</b>   |
| <b>-H5</b>  | Heavy Duty Slotted Grate - 1/2" Plate with Finger Holes |                    | <b>282.00</b>   |
| <b>SUFFIXES</b>   |   |                    |                 |
| <b>-A</b>   | Adjustable Threaded Outlet                              |                    | <b>550.00</b>   |
| <b>-BF</b>  | Butterfly Lock Sediment Basket (4" SCH 40 Outlet Only)  |                    | <b>388.00</b>   |
| <b>-K</b>   | Anchor Flange   |                    | <b>213.00</b>   |
| <b>-KC</b>  | Anchor Flange with Seepage Holes and Clamp Collar       |                    | <b>277.00</b>   |
| <b>-P</b>   | 1/2" Trap Primer Connection                             |                    | <b>94.00</b>    |
| <b>-VP</b>  | Vandal Proof Secured Top                                |                    | <b>301.00</b>   |
| <b>-YS</b>  | Sediment Basket   |                    | <b>368.00</b>   |

\*Regularly furnished unless otherwise specified.

⌚ This symbol denotes a product that is engineered to reduce installation and rework time.

For additional product information, please visit [www.zurn.com](http://www.zurn.com)  
Patent [zurn.com/patents](http://zurn.com/patents)

## Z1840-6B 6" DIAMETER INDUSTRIAL FLOOR CLEANOUT

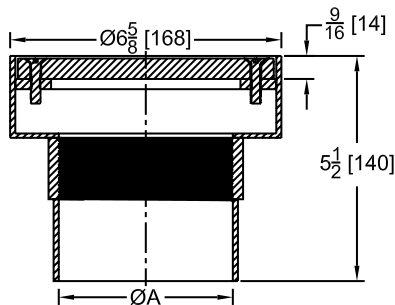
[SDcCL-R42060] **NEW**



### ENGINEERING SPECIFICATION

6-5/8" [168] Diameter, 12 gauge, type 304 stainless steel, round industrial sanitary cleanout features heavy duty grate (1/2" Thick Plate), PVC plug, and bead blasted finish.

| Dimensions in inches [mm] |          |                          |             | Approximate Weight lb [kg] |
|---------------------------|----------|--------------------------|-------------|----------------------------|
| A Pipe Size               | B N.P.T. | E Body Height Dimensions | Top Size    |                            |
| Butt-Weld / No-Hub        |          |                          |             |                            |
| 2 [51]                    | 2-1/2"   | 5-1/2 [141]              | 6-5/8 [168] | 10 [5]                     |
| 3 [76]                    | 2-1/2"   | 5-1/2 [141]              | 6-5/8 [168] |                            |
| 4 [102]                   | 3-1/2"   | 5-1/2 [141]              | 6-5/8 [168] |                            |



| PREFIXES   | DESCRIPTION                     | A PIPE SIZE           | LIST PRICE        |               |
|--|---------------------------------|-----------------------|-------------------|---------------|
| <b>Z1840-6B*</b>   | Type 304 (CF8) Stainless Steel* | 2", 3", 4"            | <b>1,050.00</b>   |               |
| <b>ZM1840-6B</b>   | Type 316 (CF8M) Stainless Steel | 2", 3", 4"            | <b>1,260.00</b>   |               |
| OUTLETS (SPECIFY PIPE SIZE IN INCHES AND TYPE OF OUTLET) |                                 |                       |                   |               |
| OUTLET TYPE  |                                 | PIPE SIZE/OUTLET TYPE | 'E' BODY HT. DIM. | ADD           |
| <b>BW</b>  | Butt-Weld<br>(Schedule 40)      | 2BW                   | 5-1/2"            | <b>N/C</b>    |
|  |                                 | 3BW                   | 5-1/2"            | <b>N/C</b>    |
|  |                                 | 4BW                   | 5-1/2"            | <b>N/C</b>    |
| <b>NH</b>  | No-Hub<br>(Schedule 10)         | 2NH                   | 5-1/2"            | <b>N/C</b>    |
|  |                                 | 3NH                   | 5-1/2"            | <b>N/C</b>    |
|  |                                 | 4NH                   | 5-1/2"            | <b>N/C</b>    |
| SUFFIXES   |                                 |                       |                   | ADD           |
| <b>-A</b>  | Adjustable Threaded Outlet      |                       |                   | <b>550.00</b> |

## Z1840-6S 6" X 6" INDUSTRIAL FLOOR CLEANOUT

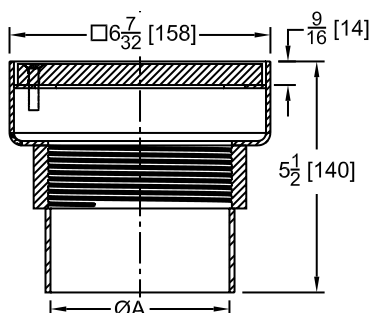
[SDcCL-Q42060] **NEW**



### ENGINEERING SPECIFICATION

6" Square, 12 gauge, type 304 stainless steel, square industrial sanitary cleanout features heavy duty grate (1/2" Thick Plate), PVC plug, and bead blasted finish.

| Dimensions in inches [mm] |          |                          |              | Approximate Weight<br>lb [kg] |
|---------------------------|----------|--------------------------|--------------|-------------------------------|
| A Pipe Size               | B N.P.T. | E Body Height Dimensions | Top Size     |                               |
| Butt-Weld / No-Hub        |          |                          |              |                               |
| 2 [51]                    | 2-1/2"   | 5-1/2 [141]              | 6-7/32 [158] | 10 [5]                        |
| 3 [76]                    | 2-1/2"   | 5-1/2 [141]              | 6-7/32 [158] |                               |
| 4 [102]                   | 3-1/2"   | 5-1/2 [141]              | 6-7/32 [158] |                               |



| PREFIXES   | DESCRIPTION                     | A PIPE SIZE           | LIST PRICE        |               |
|--|---------------------------------|-----------------------|-------------------|---------------|
| <b>Z1840-6S*</b>   | Type 304 (CF8) Stainless Steel* | 2", 3", 4"            | <b>1,050.00</b>   |               |
| <b>ZM1840-6S</b>   | Type 316 (CF8M) Stainless Steel | 2", 3", 4"            | <b>1,260.00</b>   |               |
| OUTLETS (SPECIFY PIPE SIZE IN INCHES AND TYPE OF OUTLET) |                                 |                       |                   |               |
| OUTLET TYPE  |                                 | PIPE SIZE/OUTLET TYPE | 'E' BODY HT. DIM. | ADD           |
| <b>BW</b>  | Butt-Weld<br>(Schedule 40)      | 2BW                   | 5-1/2"            | <b>N/C</b>    |
|  |                                 | 3BW                   | 5-1/2"            | <b>N/C</b>    |
|  |                                 | 4BW                   | 5-1/2"            | <b>N/C</b>    |
| <b>NH</b>  | No-Hub<br>(Schedule 10)         | 2NH                   | 5-1/2"            | <b>N/C</b>    |
|  |                                 | 3NH                   | 5-1/2"            | <b>N/C</b>    |
|  |                                 | 4NH                   | 5-1/2"            | <b>N/C</b>    |
| SUFFIXES   |                                 |                       |                   | ADD           |
| <b>-A</b>  | Adjustable Threaded Outlet      |                       |                   | <b>550.00</b> |

## Z1840-8B 8" DIAMETER INDUSTRIAL FLOOR CLEANOUT

[SDcCL-R42080]

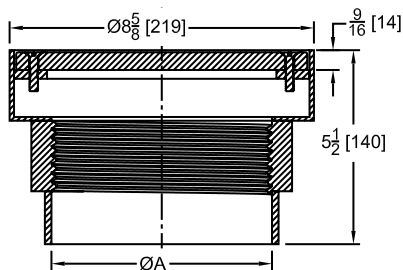
**NEW**



### ENGINEERING SPECIFICATION

8-5/8" Diameter, 12 gauge, type 304 stainless steel, round industrial sanitary cleanout features heavy duty grate (1/2" Thick Plate), PVC plug, and bead blasted finish.

| Dimensions in inches [mm] |          |             | Approximate Weight<br>lb [kg] |
|---------------------------|----------|-------------|-------------------------------|
| A Pipe Size               | B N.P.T. | Top Size    |                               |
| Butt-Weld / No-Hub        |          |             |                               |
| 2 [51]                    | 2-1/2"   | 8-5/8 [219] | 20 [9]                        |
| 3 [76]                    | 2-1/2"   | 8-5/8 [219] | 20 [9]                        |
| 4 [102]                   | 3-1/2"   | 8-5/8 [219] | 20 [9]                        |
| 6 [152]                   | 5-1/2"   | 8-5/8 [219] | 20 [9]                        |



| PREFIXES   | DESCRIPTION                     | A PIPE SIZE        | LIST PRICE      |
|--|---------------------------------|--------------------|-----------------|
| <b>Z1840-8B*</b>   | Type 304 (CF8) Stainless Steel* | 2", 3", 4", 6"     | <b>1,229.00</b> |
| <b>ZM1840-8B</b>   | Type 316 (CF8M) Stainless Steel | 2", 3", 4", 6"     | <b>1,475.00</b> |
| OUTLETS (SPECIFY PIPE SIZE IN INCHES AND TYPE OF OUTLET) |                                 |                    |                 |
| OUTLET TYPE  | PIPE SIZE/OUTLET TYPE           |                    | ADD             |
| <b>BW</b>  | Butt-Weld (Schedule 40)         | 2BW, 3BW, 4BW, 6BW | <b>N/C</b>      |
| <b>NH</b>  | No-Hub (Schedule 10)            | 2NH, 3NH, 4NH, 6NH | <b>N/C</b>      |
| SUFFIXES   |                                 |                    | ADD             |
| ⌚ <b>-A</b>  | Adjustable Threaded Outlet      |                    | <b>550.00</b>   |

## Z1840-8S 8" X 8" INDUSTRIAL FLOOR CLEANOUT

[SDcCL-Q42080]

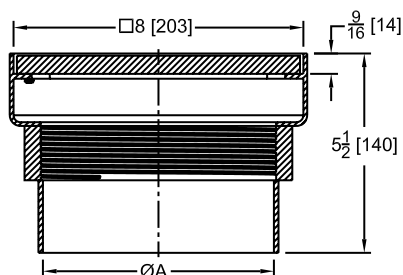
**NEW**



### ENGINEERING SPECIFICATION

8 [203] Square, 12 gauge, type 304 stainless steel, square industrial sanitary cleanout features heavy duty grate (1/2" Thick Plate), PVC plug, and bead blasted finish.

| Dimensions in inches [mm] |          |          | Approximate Weight<br>lb [kg] |
|---------------------------|----------|----------|-------------------------------|
| A Pipe Size               | B N.P.T. | Top Size |                               |
| Butt-Weld / No-Hub        |          |          |                               |
| 2 [51]                    | 5-1/2"   | 8 [203]  | 18 [8]                        |
| 3 [76]                    | 5-1/2"   | 8 [203]  | 18 [8]                        |
| 4 [102]                   | 5-1/2"   | 8 [203]  | 18 [8]                        |
| 6 [152]                   | 5-1/2"   | 8 [203]  | 18 [8]                        |



| PREFIXES   | DESCRIPTION                     | A PIPE SIZE        | LIST PRICE      |
|--|---------------------------------|--------------------|-----------------|
| <b>Z1840-8S*</b>   | Type 304 (CF8) Stainless Steel* | 2", 3", 4", 6"     | <b>1,229.00</b> |
| <b>ZM1840-8S</b>   | Type 316 (CF8M) Stainless Steel | 2", 3", 4", 6"     | <b>1,475.00</b> |
| OUTLETS (SPECIFY PIPE SIZE IN INCHES AND TYPE OF OUTLET) |                                 |                    |                 |
| OUTLET TYPE  | PIPE SIZE/OUTLET TYPE           |                    | ADD             |
| <b>BW</b>  | Butt-Weld                       | 2BW, 3BW, 4BW, 6BW | <b>N/C</b>      |
| <b>NH</b>  | No-Hub                          | 2NH, 3NH, 4NH, 6NH | <b>N/C</b>      |
| SUFFIXES   |                                 |                    | ADD             |
| ⌚ <b>-A</b>  | Adjustable Threaded Outlet      |                    | <b>550.00</b>   |

\*Regularly furnished unless otherwise specified.

⌚ This symbol denotes a product that is engineered to reduce installation and rework time.

For additional product information, please visit [www.zurn.com](http://www.zurn.com)  
Patent [zurn.com/patents](http://zurn.com/patents)

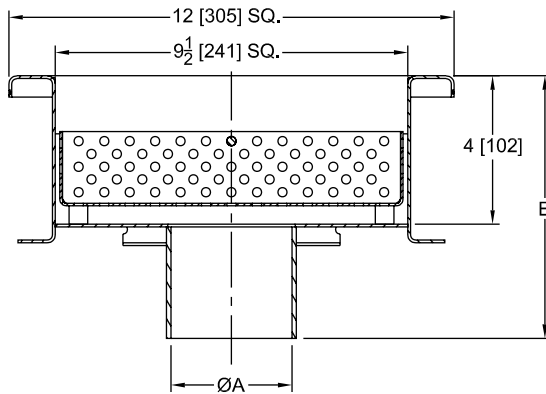
## Z1849 12" X 12" SANI-FLO® RECEPTOR 4" SUMP DEPTH

**NEW**


### ENGINEERING SPECIFICATION

12" X 12" X 4" [305 x 305 x 102] Deep, 14 gauge, type 304 stainless steel, loose set 12 gauge type 304 light duty perforated grate and 16 ga type 304 perforated stainless steel sediment basket with lift handle. Drain meets U.S. FDA standards for corrosion resistance.

| Dimensions in inches [mm] | Approximate Weight<br>lb [kg] |
|---------------------------|-------------------------------|
| A                         |                               |
| No-Hub (NH)               |                               |
| 2NH, 3NH, 4NH, 6NH        | 10 [5]                        |
| Butt-Weld (BW)            |                               |
| 2BW, 3BW, 4BW, 6BW        | 10 [5]                        |



| PREFIXES      | DESCRIPTION                     | A PIPE SIZE | LIST PRICE      |
|---------------|---------------------------------|-------------|-----------------|
| <b>Z1849*</b> | Type 304 (CF8) Stainless Steel  | 2", 3", 4"  | <b>2,121.00</b> |
|               |                                 | 6"          | <b>2,184.00</b> |
| <b>ZM1849</b> | Type 316 (CF8M) Stainless Steel | 2", 3", 4"  | <b>2,546.00</b> |
|               |                                 | 6"          | <b>2,621.00</b> |

| OUTLETS (SPECIFY PIPE SIZE IN INCHES AND TYPE OF OUTLET) |  |                    |                 |
|--|--|--------------------|-----------------|
| OUTLET TYPE  | PIPE SIZE/OUTLET TYPE                                  |                    | ADD             |
| <b>NH</b>  | No-Hub (Schedule 10)                                   | 2NH, 3NH, 4NH, 6NH | <b>N/C</b>      |
| <b>BW</b>  | Butt-Weld (Schedule 40)                                | 2BW, 3BW, 4BW, 6BW | <b>N/C</b>      |
| GRATE OPTIONS  |  |                    | ADD             |
| <b>-2</b>  | Heavy Duty Slotted Grate - 1/2" Plate                  |                    | <b>N/C</b>      |
| <b>-3</b>  | Heavy Duty Perimeter Gap Grate - 1/2" Plate            |                    | <b>N/C</b>      |
| <b>-HD</b>   | Heavy Duty Slotted Grate with Gasket Seal              |                    | <b>1,217.00</b> |
| SUFFIXES   |  |                    | ADD             |
| Ⓢ <b>-A</b>  | Adjustable Threaded Outlet                             |                    | <b>550.00</b>   |
| <b>-BF</b>   | Butterfly Lock Sediment Basket (4" SCH 40 Outlet Only) |                    | <b>768.00</b>   |
| <b>-K</b>  | Anchor Flange  |                    | <b>366.00</b>   |
| <b>-KC</b>   | Anchor Flange with Seepage Holes and Clamp Collar      |                    | <b>725.00</b>   |
| <b>-MG</b>   | EZLock Magnetic Lock System                            |                    | <b>368.00</b>   |
| <b>-P</b>  | Trap Primer Connection                                 |                    | <b>176.00</b>   |
| <b>-VP</b>   | Vandal Proof   |                    | <b>428.00</b>   |

## Z1850 12" X 12" SANI-FLOR RECEPTOR 6" SUMP DEPTH

[SDcFS-Q44120]

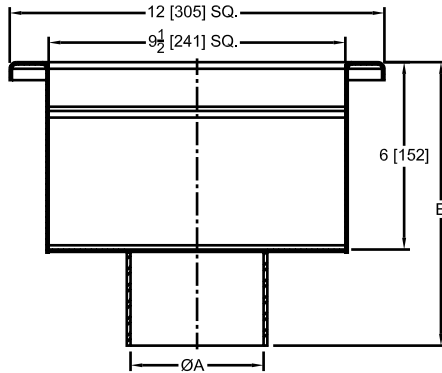
**NEW**



### ENGINEERING SPECIFICATION

Zurn Z1850 12" x 12" x 6" [305 x 305 x 152] Deep, 14 gauge, type 304 stainless steel, loose set 12 gauge light duty perforated grate, stainless steel sediment basket. Replaces Z1750-SDC.

| Dimensions in inches [mm] | Approximate Weight lb [kg] |
|---------------------------|----------------------------|
| A                         |                            |
| <b>No-Hub (NH)</b>        |                            |
| 2NH, 3NH, 4NH, 6NH        | 10 [5]                     |
| <b>Butt-Weld (BW)</b>     |                            |
| 2BW, 3BW, 4BW, 6BW        | 10 [5]                     |



| PREFIXES      | DESCRIPTION                     | A PIPE SIZE | LIST PRICE |
|---------------|---------------------------------|-------------|------------|
| <b>Z1850*</b> | Type 304 (CF8) Stainless Steel  | 2", 3", 4"  | 2,247.00   |
|               |                                 | 6"          | 2,310.00   |
| <b>ZM1850</b> | Type 316 (CF8M) Stainless Steel | 2", 3", 4"  | 2,697.00   |
|               |                                 | 6"          | 2,772.00   |

### OUTLETS (SPECIFY PIPE SIZE IN INCHES AND TYPE OF OUTLET)

| OUTLET TYPE | PIPE SIZE/OUTLET TYPE   | ADD                |
|-------------|-------------------------|--------------------|
| <b>NH</b>   | No-Hub (Schedule 10)    | 2NH, 3NH, 4NH, 6NH |
| <b>BW</b>   | Butt-Weld (Schedule 40) | 2BW, 3BW, 4BW, 6BW |

### GRATE OPTIONS

|            | ADD                      |
|------------|--------------------------|
| <b>-2</b>  | 1/2 Grate                |
| <b>-3</b>  | 3/4 Grate                |
| <b>-HD</b> | Heavy Duty Slotted Grate |

### SUFFIXES

|            | ADD  |
|------------|--|
| <b>-A</b>  | Adjustable Threaded Outlet                             |
| <b>-BF</b> | Butterfly Lock Sediment Basket (4" SCH 40 Outlet Only) |
| <b>-K</b>  | Anchor Flange  |
| <b>-KC</b> | Anchor Flange with Seepage Holes and Clamp Collar      |
| <b>-MG</b> | EZLock Magnetic Lock System                            |
| <b>-P</b>  | 1/2" Trap Primer Connection                            |
| <b>-VP</b> | Vandal Proof Secured Top                               |

## Z1851 12" X 12" SANI-FLOR RECEPTOR 8" SUMP DEPTH

[SDcFS-Q44120]

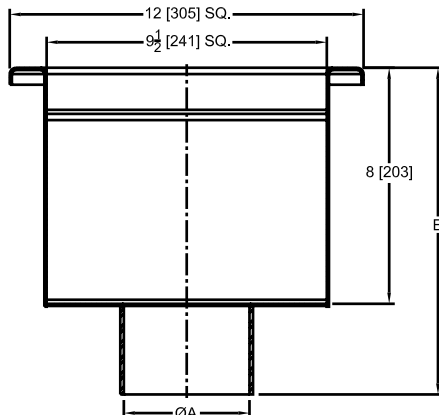
**NEW**



### ENGINEERING SPECIFICATION

Zurn Z1851 12" x 12" x 8" [305 x 305 x 203] Deep, 14 gauge, type 304 stainless steel, loose set 12 gauge light duty perforated grate, stainless steel sediment basket. Replaces Z1751-SDC.

| Dimensions in inches [mm] | Approximate Weight lb [kg] |
|---------------------------|----------------------------|
| A                         |                            |
| <b>No-Hub (NH)</b>        |                            |
| 2NH, 3NH, 4NH, 6NH        | 11 [5]                     |
| <b>Butt-Weld (BW)</b>     |                            |
| 2BW, 3BW, 4BW, 6BW        | 11 [5]                     |



| PREFIXES      | DESCRIPTION                     | A PIPE SIZE | LIST PRICE |
|---------------|---------------------------------|-------------|------------|
| <b>Z1851*</b> | Type 304 (CF8) Stainless Steel  | 2", 3", 4"  | 2,373.00   |
|               |                                 | 6"          | 2,436.00   |
| <b>ZM1851</b> | Type 316 (CF8M) Stainless Steel | 2", 3", 4"  | 2,848.00   |
|               |                                 | 6"          | 2,924.00   |

### OUTLETS (SPECIFY PIPE SIZE IN INCHES AND TYPE OF OUTLET)

| OUTLET TYPE | PIPE SIZE/OUTLET TYPE   | ADD                |
|-------------|-------------------------|--------------------|
| <b>NH</b>   | No-Hub (Schedule 10)    | 2NH, 3NH, 4NH, 6NH |
| <b>BW</b>   | Butt-Weld (Schedule 40) | 2BW, 3BW, 4BW, 6BW |

### GRATE OPTIONS

|            | ADD                      |
|------------|--------------------------|
| <b>-2</b>  | 1/2 Grate                |
| <b>-3</b>  | 3/4 Grate                |
| <b>-HD</b> | Heavy Duty Slotted Grate |

### SUFFIXES

|            | ADD  |
|------------|--|
| <b>-A</b>  | Adjustable Threaded Outlet                             |
| <b>-BF</b> | Butterfly Lock Sediment Basket (4" SCH 40 Outlet Only) |
| <b>-K</b>  | Anchor Flange  |
| <b>-KC</b> | Anchor Flange with Seepage Holes and Clamp Collar      |
| <b>-MG</b> | EZLock Magnetic Lock System                            |
| <b>-P</b>  | 1/2" Trap Primer Connection                            |
| <b>-VP</b> | Vandal Proof Secured Top                               |

For additional product information, please visit [www.zurn.com](http://www.zurn.com)  
Patent [zurn.com/patents](http://zurn.com/patents)

# Z1852 12" X 12" SANI-FLOR RECEPTOR 10" SUMP DEPTH

[SDcFS-Q44120]

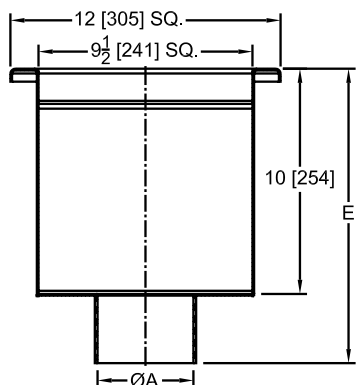
**NEW**



## ENGINEERING SPECIFICATION

Zurn Z1852 12" x 12" x 10" [305 x 305 x 254] Deep, 14 gauge, type 304 stainless steel, loose set 12 gauge light duty perforated grate, stainless steel sediment basket. Replaces Z1752-SDC.

| Dimensions in inches [mm] | Approximate Weight<br>lb [kg] |
|---------------------------|-------------------------------|
| A                         |                               |
| <b>No-Hub (NH)</b>        |                               |
| 2NH, 3NH, 4NH, 6NH        | 13 [6]                        |
| <b>Butt-Weld (BW)</b>     |                               |
| 2BW, 3BW, 4BW, 6BW        | 14 [6]                        |



| PREFIXES      | DESCRIPTION                     | A PIPE SIZE | LIST PRICE      |
|---------------|---------------------------------|-------------|-----------------|
| <b>Z1852*</b> | Type 304 (CF8) Stainless Steel  | 2", 3", 4"  | <b>2,499.00</b> |
|               |                                 | 6"          | <b>2,562.00</b> |
| <b>ZM1852</b> | Type 316 (CF8M) Stainless Steel | 2", 3", 4"  | <b>2,999.00</b> |
|               |                                 | 6"          | <b>3,075.00</b> |

## OUTLETS (SPECIFY PIPE SIZE IN INCHES AND TYPE OF OUTLET)

| OUTLET TYPE | PIPE SIZE/OUTLET TYPE   | ADD                              |
|-------------|-------------------------|----------------------------------|
| <b>NH</b>   | No-Hub (Schedule 10)    | 2NH, 3NH, 4NH, 6NH<br><b>N/C</b> |
| <b>BW</b>   | Butt-Weld (Schedule 40) | 2BW, 3BW, 4BW, 6BW<br><b>N/C</b> |

## GRATE OPTIONS

|            | ADD   |
|------------|---|
| <b>-2</b>  | 1/2 Grate<br><b>N/C</b>                     |
| <b>-3</b>  | 3/4 Grate<br><b>N/C</b>                     |
| <b>-HD</b> | Heavy Duty Slotted Grate<br><b>1,217.00</b> |

## SUFFIXES

|             | ADD   |
|-------------|---|
| ⌚ <b>-A</b> | Adjustable Threaded Outlet<br><b>550.00</b>                             |
| <b>-BF</b>  | Butterfly Lock Sediment Basket (4" SCH 40 Outlet Only)<br><b>768.00</b> |
| <b>-K</b>   | Anchor Flange<br><b>366.00</b>  |
| <b>-KC</b>  | Anchor Flange with Seepage Holes and Clamp Collar<br><b>725.00</b>      |
| <b>-MG</b>  | EZLock Magnetic Lock System<br><b>368.00</b>                            |
| <b>-P</b>   | 1/2" Trap Primer Connection<br><b>176.00</b>                            |
| <b>-VP</b>  | Vandal Proof Secured Top<br><b>428.00</b>                               |

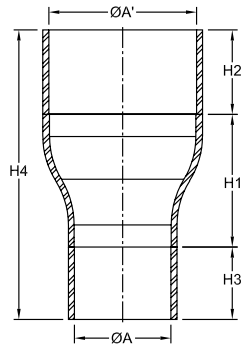
# Z1870 HUB DRAIN

[SDcHD] **NEW**



## ENGINEERING SPECIFICATION

Type 304 stainless steel, hub drain.



| PREFIXES   | DESCRIPTION                     | A INLET (LARGER) SIZE | LIST PRICE |
|--|---------------------------------|-----------------------|------------|
| Z1870*   | Type 304 (CF8) Stainless Steel* | 3", 4"                | 567.00     |
|  |                                 | 6", 8"                | 725.00     |
| ZM1870   | Type 316 (CF8M) Stainless Steel | 3", 4"                | 681.00     |
|  |                                 | 6", 8"                | 870.00     |
| OUTLETS (SPECIFY PIPE SIZE IN INCHES AND TYPE OF OUTLET) |                                 |                       |            |
| OUTLET TYPE  |                                 | PIPE SIZE/OUTLET TYPE | ADD        |
| BW   | Butt-Weld (Schedule 40)         | 3BW, 4BW, 6BW, 8BW    | N/C        |
| NH   | No-Hub (Schedule 10)            | 3NH, 4NH, 6NH, 8NH    | N/C        |

| Dimensions in inches [mm]               |             |            |            |          | Approximate Weight<br>lb [kg] |
|---|-------------|------------|------------|----------|-------------------------------|
| Nominal Pipe<br>A' - Inlet / B - Outlet | H1          | H2         | H3         | H4       |                               |
| Butt-Weld / No-Hub                      |             |            |            |          |                               |
| 3/2 [38]                                | 3-1/2 [89]  | 2-1/2 [64] | 3 [76]     | 9 [229]  | 5 [2]                         |
| 4/2 [51]                                | 4 [102]     | 3 [76]     | 3 [76]     | 10 [254] | 6 [2]                         |
| 6/2 [76]                                | 5-1/2 [140] | 3-1/2 [89] | 4 [102]    | 13 [330] | 8 [4]                         |
| 4/3 [34]                                | 4 [102]     | 3 [76]     | 3 [76]     | 10 [254] | 8 [4]                         |
| 6/3 [51]                                | 5-1/2 [140] | 3-1/2 [89] | 3 [76]     | 12 [305] | 8 [4]                         |
| 6/4 [38]                                | 5-1/2 [140] | 3 [76]     | 3-1/2 [89] | 12 [305] | 15 [7]                        |
| 8/4 [51]                                | 5-1/2 [140] | 3 [76]     | 3-1/2 [89] | 12 [305] | 24 [11]                       |
| 8/6 [34]                                | 6 [152]     | 4 [102]    | 4 [102]    | 14 [356] | 26 [12]                       |

\*Regularly furnished unless otherwise specified.

⌚ This symbol denotes a product that is engineered to reduce installation and rework time.

For additional product information, please visit [www.zurn.com](http://www.zurn.com)  
Patent [zurn.com/patents](http://zurn.com/patents)

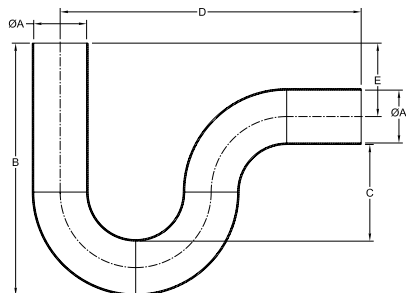
# Z1890 P-TRAP

[SDcPT] **NEW**



## ENGINEERING SPECIFICATION

Type 304 stainless steel, P Trap.



| PREFIXES   | DESCRIPTION                     | A PIPE SIZE           | LIST PRICE |
|--|---------------------------------|-----------------------|------------|
| Z1890*   | Type 304 (CF8) Stainless Steel* | 2"                    | 672.00     |
|  |                                 | 3", 4"                | 987.00     |
|  |                                 | 6"                    | 2,751.00   |
| ZM1890   | Type 316 (CF8M) Stainless Steel | 2"                    | 807.00     |
|  |                                 | 3", 4"                | 1,185.00   |
|  |                                 | 6"                    | 3,302.00   |
| OUTLETS (SPECIFY PIPE SIZE IN INCHES AND TYPE OF OUTLET) |                                 |                       |            |
| OUTLET TYPE  |                                 | PIPE SIZE/OUTLET TYPE | ADD        |
| BW   | Butt-Weld (Schedule 40)         | 2BW, 3BW, 4BW, 6BW    | N/C        |
| NH   | No-Hub (Schedule 10)            | 2NH, 3NH, 4NH, 6NH    | N/C        |

| Product Designation | Dimensions in inches [mm] |                |              |                |                | Approximate Weight<br>lb [kg] |
|---------------------|---------------------------|----------------|--------------|----------------|----------------|-------------------------------|
|                     | A Pipe Size               | B              | C            | D              | E              |                               |
| Butt-Weld           |                           |                |              |                |                |                               |
| 2BW                 | 2 [51]                    | 11-13/64 [285] | 2-47/64 [69] | 10 [254]       | 5-1/64 [127]   | 5 [2]                         |
| 3BW                 | 3 [76]                    | 17-1/4 [438]   | 3-1/16 [78]  | 16 [406]       | 9-1/64 [229]   | 11 [5]                        |
| 4BW                 | 4 [102]                   | 18-1/4 [464]   | 3-37/64 [91] | 17-1/2 [445]   | 7-63/64 [203]  | 16 [7]                        |
| 6BW                 | 6 [152] 27                | 27-5/16 [694]  | 3-11/32 [85] | 23-51/64 [604] | 14-7/64 [358]  | 33 [15]                       |
| No-Hub              |                           |                |              |                |                |                               |
| 2NH                 | 2 [51]                    | 11-13/64 [285] | 2-45/64 [69] | 10 [254]       | 5 [127]        | 5 [2]                         |
| 3NH                 | 3 [76]                    | 17-1/4 [438]   | 3-1/8 [79]   | 16-1/16 [408]  | 8-15/16 [227]  | 11 [5]                        |
| 4NH                 | 4 [102]                   | 18-1/4 [464]   | 3-39/64 [92] | 17-39/64 [447] | 7-59/64 [201]  | 16 [7]                        |
| 6NH                 | 6 [152]                   | 27-5/16 [694]  | 3-33/64 [89] | 23-45/64 [602] | 13-15/16 [354] | 33 [15]                       |

## ZS890 6" WIDE SANI-FLO® TRENCH DRAIN SYSTEM



Standard Length: 80"  
Standard Grate Included: FS or PS

### ENGINEERING SPECIFICATION

Channels shall be 80" long, 6" wide, and have a 4" wide throat. Modular channel sections shall be made of 16-gauge 304 stainless steel and shall be provided with a neoprene gasket for flanged connections. Channel shall be provided either flat (neutral) or with a 1.04% pre-slope. Channels shall be available with inverts ranging from 3.5" to 16.00". Choices of class A thru E grates shall be available with H-20 and/or FAA load ratings and/or ADA compliance with mechanical lockdown devices. End caps and catch basins shall be available to complement the channels and grates. Trench drain shall be Flo-Thru model ZS890.

### NOTES

Type 316 Stainless Steel trench is available upon request. Please call customer care for pricing and lead time.

| PREFIX  | DESCRIPTION   | CHANNEL NUMBER   | LIST PRICE/FOOT |
|---|---|------------------|-----------------|
| ZS*   | 80" #16-Gauge Type 304 Stainless Steel Trench with Fabricated Stainless Steel Grate with Four Stainless Steel Lockdowns | 89001 thru 89015 | 468.00          |
|   |   |                  | ADD/EACH        |
| Endcaps/Outlet                                  |   |                  | 422.00          |
| GRATE OPTIONS                                   |   |                  | ADD/FOOT        |
| -GG   | Fiberglass Grate - Class A  |                  | 147.00          |
| -HPS  | Heel-Proof Stainless Steel Slotted Grate - Class A  |                  | 460.00          |
| -PVSS   | Stainless Steel Paver Slot - Class B  |                  | 414.00          |
| -PVSSD  | Stainless Steel Heel Proof Double Paver Slot - Class B  |                  | 414.00          |
| -RFSC   | Reinforced Stainless Steel Slotted Grate - Class C  |                  | 147.00          |
| -RPSC   | Reinforced Stainless Steel Perforated Grate - Class C   |                  | 147.00          |
| -RPSRC  | Reinforced Stainless Steel Perforated Reverse Punch Anti-Slip Grate - Class C   |                  | 147.00          |
| -SBG  | Stainless Steel Bar Grate - Class E   |                  | 252.00          |
| -SCD  | Stainless Steel Circular Decorative Grate - Class B   |                  | 460.00          |
| -SDD  | Stainless Steel Diagonal Decorative Grate - Class B   |                  | 460.00          |
| -SOG  | Stainless Steel Decorative Grate - Class B  |                  | 460.00          |
| -SWGB-AS  | Slip-Resistant Stainless Steel Wire Grate - Class B   |                  | 453.00          |
| <b>MADE IN THE U.S.A.</b> (HIGHLIGHTED IN GRAY) |   |                  |                 |
| GRATE OPTIONS                                   |   |                  | ADD/FOOT        |
| -FS   | Fabricated Stainless Steel Slotted Grate - Class A  |                  | *               |
| -PS   | Stainless Steel Perforated Grate - Class A  |                  | N/C             |
| -PSR  | Stainless Steel Perforated Reverse Punch Anti-Slip Grate - Class A  |                  | N/C             |
| MISCELLANEOUS OPTIONS                           |   |                  | ADD/FOOT        |
| -K  | Anchor Flange   |                  | 154.00          |
| -KC   | Clamp Collar and Pan with Weep Holes  |                  | 254.00          |
| -P6-DEBRIS-COVER                                | Debris Cover  |                  | N/C             |
| -VP   | Vandal-Proof Center Lockdown  |                  | 15.00           |
|   |   |                  | ADD/EACH        |
| -DB   | Bottom Drop-In Bucket   |                  | 444.00          |
| -VG   | Viton Gasket  |                  | 155.00          |
| SERVICE CHARGES                                 |   |                  | ADD/EACH        |
| Fabrication - 45°; 90°; Tee Fabs                |   |                  | 3,483.00        |
| - Cross Fabs                                    |   |                  | 6,963.00        |

| Trench Number | Shallow Invert |       | Deep Invert |       | Flow Rate |     |       | Approx. Wt. |      |
|---------------|----------------|-------|-------------|-------|-----------|-----|-------|-------------|------|
|               | In.            | mm    | In.         | mm    | LPS       | GPM | CFS   | lb          | Kg   |
| 89001         | 3.5            | 89    | 4.33        | 110.1 | 8         | 129 | 0.287 | 20          | 9    |
| 89002         | 4.33           | 110.1 | 5.17        | 131.2 | 10        | 163 | 0.363 | 21          | 9.5  |
| 89003         | 5.17           | 131.2 | 5.38        | 6.00  | 13        | 201 | 0.448 | 23          | 10.4 |
| 89004         | 6.00           | 152.4 | 6.83        | 173.6 | 15        | 239 | 0.532 | 24          | 10.9 |
| 89005         | 6.83           | 173.6 | 7.67        | 194.7 | 17        | 276 | 0.615 | 26          | 11.8 |
| 89006         | 7.67           | 194.7 | 8.5         | 215.9 | 20        | 313 | 0.697 | 27          | 12.2 |
| 89007         | 8.5            | 215.9 | 9.33        | 237.1 | 22        | 351 | 0.782 | 29          | 13.1 |
| 89008         | 9.33           | 237.1 | 10.17       | 258.2 | 25        | 389 | 0.867 | 30          | 13.6 |
| 89009         | 10.17          | 258.2 | 11.00       | 279.4 | 27        | 428 | 0.954 | 32          | 14.5 |
| 89010         | 11.00          | 279.4 | 11.83       | 300.6 | 29        | 465 | 1.036 | 34          | 15.4 |
| 89011         | 11.83          | 300.6 | 12.67       | 321.7 | 32        | 504 | 1.123 | 35          | 15.9 |
| 89012         | 12.67          | 321.7 | 13.50       | 342.9 | 34        | 543 | 1.21  | 37          | 16.8 |
| 89013         | 13.50          | 342.9 | 14.33       | 364.1 | 37        | 581 | 1.294 | 39          | 17.7 |
| 89014         | 14.33          | 364.1 | 15.17       | 385.2 | 39        | 620 | 1.381 | 40          | 18.1 |
| 89015         | 15.17          | 385.2 | 16.00       | 406.4 | 42        | 659 | 1.468 | 42          | 19   |

\*Regularly furnished unless otherwise specified.

⌚ This symbol denotes a product that is engineered to reduce installation and rework time.

For additional product information, please visit [www.zurn.com](http://www.zurn.com)

Patent [zurn.com/patents](http://zurn.com/patents)

## Z891 STAINLESS STEEL SLOTTED DRAINAGE SYSTEM




Standard Length: 5'

### ENGINEERING SPECIFICATION

Channels shall be 5' long, 3/4" wide slot and have a 2-1/4" wide throat. Modular channel sections shall be made of 16-gauge type 304 stainless steel. Channel shall be provided with no slope (neutral) or with a 1.04% built-in slope. Channels shall be available with inverts ranging from 4" to 10.25". End caps and catch basins shall be available to complement the channels. Trench drain shall be Flo-Thru model Z891.

### NOTES

Type 316 Stainless Steel trench is available upon request. Please call customer care for pricing and lead time.

| PREFIX  | DESCRIPTION  | LIST PRICE/FOOT |
|---|--|-----------------|
| Z*  | 5' #16 Gauge Type 304 Modular Stainless Steel Slotted Trench Drain with Bolted Flange Connection | 426.00          |
|  <b>MADE IN THE U.S.A.</b> (HIGHLIGHTED IN GRAY) |  |                 |
| OUTLET ADAPTERS   |  | ADD/EACH        |
| - E1  | Closed End Cap   | 422.00          |
| - E2  | 2" No-Hub End Outlet   | 422.00          |
| - U2  | 2" No-Hub Bottom Outlet  | 422.00          |
| MISCELLANEOUS OPTIONS   |  | ADD/FOOT        |
| - HD  | Heavy Duty Reinforcement - Class E   | 225.00          |
| - K   | Waterproofing Flange   | 171.00          |
| - KC  | Pan and Clamping Collar with Weep Holes  | 254.00          |

| Trench Number | Shallow Invert |     | Deep Invert |     | Flow Rate |     |     | Approx. Wt. |      |
|---------------|----------------|-----|-------------|-----|-----------|-----|-----|-------------|------|
|               | In.            | mm  | In.         | mm  | GPM       | CFS | LPS | lb          | Kg   |
| 89101         | 4              | 102 | 4.63        | 118 | 51        | 3   | 194 | 15          | 6.8  |
| 89102         | 4.63           | 118 | 5.25        | 133 | 67        | 4   | 255 | 16          | 7.3  |
| 89103         | 5.25           | 133 | 5.88        | 149 | 84        | 5   | 316 | 17          | 7.7  |
| 89104         | 5.88           | 149 | 6.50        | 165 | 100       | 6   | 378 | 18          | 8.2  |
| 89105         | 6.50           | 165 | 7.13        | 181 | 117       | 7   | 441 | 19          | 8.6  |
| 89106         | 7.13           | 181 | 7.75        | 197 | 135       | 8   | 504 | 20          | 9.1  |
| 89107         | 7.75           | 197 | 8.38        | 213 | 150       | 9   | 568 | 21          | 9.6  |
| 89108         | 8.38           | 213 | 9.00        | 229 | 167       | 11  | 632 | 22          | 10   |
| 89109         | 9.00           | 229 | 9.63        | 245 | 184       | 12  | 696 | 23          | 10.5 |
| 89110         | 9.63           | 245 | 10.25       | 260 | 201       | 13  | 760 | 24          | 10.9 |

## Z893 STAINLESS STEEL FLOOR RECEPTOR WITH BAR GRATE



### ENGINEERING SPECIFICATION

Channels are made of #14 ga. fabricated Stainless Steel conforming to ASTM A-240 (Type 304). Channels weigh less than 4.15 lb per linear foot, have a smooth, 1.5" radiused self cleaning bottom with a Manning's coefficient of .009. Channels have feet for patty pour or leveling studs standard to secure trench in its final location with 4" No-Hub bottom outlet. All welds must be performed by a certified welder per ASTM standard AWS D1.6. Channels to be produced in the U.S.A.

### NOTES

Standard size units are shown, special sizes are available upon request.

| SIZE<br>W" X          | L"                                   | GRATE<br>WIDTH | SBG<br>QTY. | LIST PRICE | -SBG<br>LIST ADD | -RPSC/<br>RFSC<br>LIST ADD | -RFS/RPS<br>LIST ADD |
|-----------------------|--------------------------------------|----------------|-------------|------------|------------------|----------------------------|----------------------|
| 12x                   | 24                                   | 11.25          | 1           | 5,379.00   | *                | 620.00                     | -                    |
| 12x                   | 30                                   | 11.25          | 2           | 6,724.00   | *                | 774.00                     | -                    |
| 12x                   | 36                                   | 11.25          | 2           | 8,068.00   | *                | 930.00                     | -                    |
| 12x                   | 48                                   | 11.25          | 2           | 10,757.00  | *                | 1,235.00                   | -                    |
| 12x                   | 60                                   | 11.25          | 3           | 13,446.00  | *                | 1,543.00                   | -                    |
| 12x                   | 72                                   | 11.25          | 3           | 16,138.00  | *                | 1,851.00                   | -                    |
| 12x                   | 84                                   | 11.25          | 4           | 18,830.00  | *                | 2,159.00                   | -                    |
| 12x                   | 96                                   | 11.25          | 4           | 20,685.00  | *                | 2,467.00                   | -                    |
| 12x                   | 108                                  | 11.25          | 5           | 24,202.00  | *                | 2,775.00                   | -                    |
| 12x                   | 120                                  | 11.25          | 5           | 26,891.00  | *                | 3,082.00                   | -                    |
| 18x                   | 24                                   | 17.25          | 1           | 6,636.00   | *                | -                          | 764.00               |
| 18x                   | 30                                   | 17.25          | 2           | 8,295.00   | *                | -                          | 956.00               |
| 18x                   | 36                                   | 17.25          | 2           | 9,953.00   | *                | -                          | 1,144.00             |
| 18x                   | 48                                   | 17.25          | 2           | 13,271.00  | *                | -                          | 1,425.00             |
| 18x                   | 60                                   | 17.25          | 3           | 16,589.00  | *                | -                          | 1,905.00             |
| 18x                   | 72                                   | 17.25          | 3           | 19,906.00  | *                | -                          | 2,285.00             |
| 18x                   | 84                                   | 17.25          | 4           | 23,224.00  | *                | -                          | 2,665.00             |
| 18x                   | 96                                   | 17.25          | 4           | 26,542.00  | *                | -                          | 3,048.00             |
| 18x                   | 108                                  | 17.25          | 5           | 29,860.00  | *                | -                          | 3,426.00             |
| 18x                   | 120                                  | 17.25          | 5           | 33,177.00  | *                | -                          | 3,805.00             |
| 24x                   | 24                                   | 23.25          | 2           | 7,252.00   | *                | -                          | 4,069.00             |
| 24x                   | 30                                   | 23.25          | 2           | 9,064.00   | *                | -                          | 5,086.00             |
| 24x                   | 36                                   | 23.25          | 2           | 10,877.00  | *                | -                          | 6,101.00             |
| 24x                   | 48                                   | 23.25          | 3           | 14,503.00  | *                | -                          | 8,134.00             |
| 24x                   | 60                                   | 23.25          | 3           | 18,128.00  | *                | -                          | 10,169.00            |
| 24x                   | 72                                   | 23.25          | 4           | 21,753.00  | *                | -                          | 12,199.00            |
| 24x                   | 84                                   | 23.25          | 5           | 25,379.00  | *                | -                          | 14,232.00            |
| 24x                   | 96                                   | 23.25          | 5           | 29,005.00  | *                | -                          | 16,264.00            |
| 24x                   | 108                                  | 23.25          | 6           | 32,632.00  | *                | -                          | 18,297.00            |
| 24x                   | 120                                  | 23.25          | 6           | 36,258.00  | *                | -                          | 20,331.00            |
| MISCELLANEOUS OPTIONS |                                      |                |             |            |                  |                            | ADD/FOOT             |
| -KC                   | Clamp Collar and Pan with Weep Holes |                |             |            |                  |                            | 329.00               |
| -VP                   | Vandal-Proof Center Lockdown         |                |             |            |                  |                            | 15.00                |
| ADD/EACH              |                                      |                |             |            |                  |                            |                      |
| -DB                   | Bottom Drop-In Bucket                |                |             |            |                  |                            | 117.00               |

| Size | No. of Grates | Dimensions in Inches [mm] |     |     |      |     |     |
|------|---------------|---------------------------|-----|-----|------|-----|-----|
|      |               | A                         |     | B   |      | C   |     |
|      |               | In.                       | mm  | In. | mm   | In. | mm  |
| 12   | 1             | 14.3                      | 363 | 24  | 610  | 4   | 102 |
|      | 2             |                           |     | 48  | 1219 |     |     |
|      | 3             |                           |     | 72  | 1829 |     |     |
|      | 5             |                           |     | 120 | 3048 |     |     |
| 18   | 1             | 20.3                      | 516 | 24  | 610  |     |     |
|      | 2             |                           |     | 48  | 1219 |     |     |
|      | 3             |                           |     | 72  | 1829 |     |     |
|      | 5             |                           |     | 120 | 3048 |     |     |
| 24   | 1             | 26.6                      | 676 | 24  | 610  |     |     |
|      | 2             |                           |     | 48  | 1219 |     |     |
|      | 3             |                           |     | 72  | 1829 |     |     |
|      | 5             |                           |     | 120 | 3048 |     |     |

\*Regularly furnished unless otherwise specified.

⌚ This symbol denotes a product that is engineered to reduce installation and rework time.

For additional product information, please visit [www.zurn.com](http://www.zurn.com)  
Patent [zurn.com/patents](http://zurn.com/patents)

## Z894 24" WIDE TRENCH DRAIN SYSTEM



Standard length: 60"  
Standard grate: FS

### ENGINEERING SPECIFICATION

24" Wide Pre-Sloped Trench Drainage System with 1/8" per foot slope. #12 Gage Type 304 Stainless Steel drain channel with bolted flanged connection complete with rubber neoprene flange gasket.

| PREFIX                            | DESCRIPTION   | CHANNEL NUMBER                    | LIST PRICE/FOOT |
|-----------------------------------|---|-----------------------------------|-----------------|
| Z*                                | #12 Gage Type 304 Stainless Steel Trench              | Section 1-6 (6"-9.75" invert)     | 1,751.00        |
| Z*                                | #12 Gage Type 304 Stainless Steel Trench              | Section 7-12 (9.75"-13.5" invert) | 1,876.00        |
| ENDCAP/OUTLET OPTIONS             |   |                                   | ADD/EACH        |
| Endcaps/Outlet                    |   |                                   | 401.00          |
| GRATE OPTIONS - NO STANDARD GRATE |   |                                   | ADD/FOOT        |
| -RFS                              | Reinforced Stainless Steel Slotted Grate - Class A    |                                   | 1,914.00        |
| -RPS                              | Reinforced Stainless Steel Perforated Grate - Class A |                                   | 1,631.00        |
| -SBG                              | Stainless Steel Bar Grate - Class A                   |                                   | 4,452.00        |
| -GG                               | Fiberglass Grate - Class A                            |                                   | 210.00          |
| MISCELLANEOUS OPTIONS             |   |                                   | ADD/FOOT        |
| -K                                | Anchor Flange   |                                   | 196.00          |
| -KC                               | Clamp Collar and Pan with Weep Holes                  |                                   | 296.00          |
| -VP                               | Vandal-Proof Center Lockdown                          |                                   | 15.00           |
|                                   |   |                                   | ADD/EACH        |
| -DB                               | Bottom Drop-In Bucket                                 |                                   | 422.00          |
| -GL                               | Grate Lockdown Assembly                               |                                   | 57.00           |
| SERVICE CHARGES                   |   |                                   | ADD/EACH        |
| Fabrication - 45°; 90°; Tee Fabs  |   |                                   | 4,438.00        |
| - Cross Fabs                      |   |                                   | 8,868.00        |

| Trench Number | Overall Depth |     |        |     | Max. Flow Rate |      |     | Approx. Wt. (Less Grates) |    |
|---------------|---------------|-----|--------|-----|----------------|------|-----|---------------------------|----|
|               | A Min.        |     | B Max. |     | CFS            | GPM  | LPS | lb                        | Kg |
|               | In.           | mm  | In.    | mm  |                |      |     |                           |    |
| 89401         | 6.00          | 152 | 6.63   | 168 | 3              | 1299 | 82  | 70                        | 32 |
| 89402         | 6.63          | 168 | 7.25   | 184 | 4              | 1636 | 103 | 72                        | 33 |
| 89402N        | 7.25          | 184 | 7.25   | 184 | -              | -    | -   | 73                        | 33 |
| 89403         | 7.25          | 184 | 7.88   | 200 | 4              | 1991 | 126 | 74                        | 34 |
| 89404         | 7.88          | 200 | 8.50   | 216 | 5              | 2362 | 149 | 76                        | 34 |
| 89404N        | 8.50          | 216 | 8.50   | 216 | -              | -    | -   | 77                        | 35 |
| 89405         | 8.50          | 216 | 9.13   | 232 | 6              | 2746 | 173 | 78                        | 35 |
| 89406         | 9.13          | 232 | 9.75   | 248 | 7              | 3142 | 198 | 80                        | 36 |
| 89406N        | 9.75          | 248 | 9.75   | 248 | -              | -    | -   | 81                        | 37 |
| 89407         | 9.75          | 248 | 10.38  | 264 | 8              | 3548 | 224 | 82                        | 37 |
| 89408         | 10.38         | 264 | 11.00  | 279 | 9              | 3963 | 250 | 84                        | 38 |
| 89408N        | 11.00         | 279 | 11.00  | 279 | -              | -    | -   | 85                        | 39 |
| 89409         | 11.00         | 279 | 11.63  | 295 | 10             | 4387 | 277 | 86                        | 39 |
| 89410         | 11.63         | 295 | 12.25  | 311 | 11             | 4817 | 304 | 88                        | 40 |
| 89410N        | 12.25         | 311 | 12.25  | 311 | -              | -    | -   | 89                        | 40 |
| 89411         | 12.25         | 311 | 12.88  | 327 | 12             | 5253 | 331 | 90                        | 41 |
| 89412         | 12.88         | 327 | 13.50  | 343 | 13             | 5696 | 359 | 92                        | 42 |
| 89412N        | 13.50         | 343 | 13.50  | 343 | -              | -    | -   | 93                        | 42 |
| 89413         | 13.50         | 343 | 14.13  | 359 | 14             | 6143 | 388 | 94                        | 43 |
| 89414         | 14.13         | 359 | 14.75  | 375 | 15             | 6595 | 416 | 96                        | 44 |
| 89414N        | 14.75         | 375 | 14.75  | 375 | -              | -    | -   | 97                        | 44 |
| 89415         | 14.75         | 375 | 15.38  | 391 | 16             | 7051 | 445 | 98                        | 44 |
| 89416         | 15.38         | 391 | 16.00  | 406 | 17             | 7512 | 474 | 100                       | 45 |
| 89416N        | 16.00         | 406 | 16.00  | 406 | -              | -    | -   | 101                       | 46 |
| 89417         | 16.00         | 406 | 16.63  | 422 | 18             | 7975 | 503 | 102                       | 46 |
| 89418         | 16.63         | 422 | 17.25  | 438 | 19             | 8442 | 533 | 104                       | 47 |
| 89418N        | 17.25         | 438 | 17.25  | 438 | -              | -    | -   | 105                       | 48 |
| 89419         | 17.25         | 438 | 17.88  | 454 | 20             | 8912 | 562 | 106                       | 48 |
| 89420         | 17.88         | 454 | 18.50  | 470 | 21             | 9385 | 592 | 108                       | 49 |

## ZS895 12" WIDE SANI-FLO® TRENCH DRAIN SYSTEM



Standard Length: 96"  
Standard Grate Included: FS or PS

### ENGINEERING SPECIFICATION

Channels shall be 96" long, 12" wide, and have a 9-1/8" wide throat. Modular channel sections shall be made of 12-gauge 304 stainless steel. Channel shall be provided with no slope (neutral) or with a 1.04% built-in slope. Channels shall be available with inverts ranging from 6.00" to 18.50". Choices of class A thru C grates shall be available with H-20 and/or FAA load ratings and/or ADA compliance with mechanical lockdown devices. End caps and catch basins shall be available to complement the channels and grates. End outlets, bottom outlets, and side outlets shall be available in 4", 6", and 8" diameters. Trench drain shall be Flo-Thru model ZS895.

### NOTES

Type 316 Stainless Steel trench is available upon request. Please call customer care for pricing and lead time.

| MADE IN THE U.S.A. (HIGHLIGHTED IN GRAY) |  |                  |                 |
|--|--|------------------|-----------------|
| PREFIX                                   | DESCRIPTION  | CHANNEL NUMBER   | LIST PRICE/FOOT |
| ZS*                                      | 96" #12-Gauge Type 304 Stainless Steel Trench with Stamped Stainless Steel Grate with Four Stainless Steel Lockdowns | 89501 thru 89515 | 938.00          |
| OPTIONS                                  |  |                  | ADD/EACH        |
| Endcaps/Outlet                           |  |                  | 496.00          |
| GRATE OPTIONS                            |  |                  | ADD/FOOT        |
| - FS                                     | Fabricated Stainless Steel Slotted Grate - Class A   |                  | *               |
| - GG                                     | Fiberglass Grate (Not Made in U.S.A. Configurable) - Class A   |                  | 345.00          |
| - PS                                     | Stainless Steel Perforated Grate - Class A   |                  | N/C             |
| - PSR                                    | Stainless Steel Perforated Reverse Punch Grate - Class A   |                  | N/C             |
| - RFSC                                   | Reinforced Stainless Steel Slotted Grate - Class C   |                  | 415.00          |
| - RPSC                                   | Reinforced Stainless Steel Perforated Grate - Class C  |                  | 595.00          |
| - RPSRC                                  | Reinforced Stainless Steel Perforated Reversed Punch Anti-Slip Grate - Class C                                       |                  | 595.00          |
| - SBGE                                   | Stainless Steel Bar Grate - Class E  |                  | 651.00          |
| - SBG-L                                  | Stainless Steel Bar Grate - Class C  |                  | 524.00          |
| - SSCD                                   | Reinforced Stainless Steel Solid Cover - Class B   |                  | 464.00          |
| - SWG                                    | Stainless Steel Wire Grate   |                  | 549.00          |
| - SWGB-AS                                | Slip-Resistant Stainless Steel Wire Grate - Class B  |                  | 1,071.00        |
| MISCELLANEOUS OPTIONS                    |  |                  | ADD/FOOT        |
| - K                                      | Anchor Flange  |                  | 186.00          |
| - KC                                     | Clamp Collar and Pan with Weep Holes   |                  | 281.00          |
| - P12-DEBRIS-COVER                       | Debris Cover   |                  | N/C             |
| - VG                                     | Viton Gasket   |                  | 98.00           |
| - VP                                     | Vandal-Proof Center Lockdown   |                  | 14.00           |
|  |  |                  | ADD/EACH        |
| - DB                                     | Bottom Drop-In Bucket  |                  | 401.00          |
| SERVICE CHARGES                          |  |                  | ADD/EACH        |
| Fabrication - 45°; 90°; Tee Fabs         |  |                  | 3,951.00        |
| - Cross Fabs                             |  |                  | 7,893.00        |

| Trench Number | Shallow Invert |       | Deep Invert |       | Flow Rate |      |     | Approx. Wt. |      |
|---------------|----------------|-------|-------------|-------|-----------|------|-----|-------------|------|
|               | In.            | mm    | In.         | mm    | CFS       | GPM  | LPS | lb          | Kg   |
| 89501         | 6.00           | 152.4 | 7.00        | 177.8 | 1.286     | 577  | 36  | 70          | 31.7 |
| 89502         | 7.00           | 177.8 | 8.00        | 203.2 | 2.324     | 1043 | 66  | 73          | 33.1 |
| 89503         | 8.00           | 203.2 | 9.00        | 228.6 | 2.705     | 1214 | 77  | 76          | 34.5 |
| 89504         | 9.00           | 228.6 | 10.00       | 254   | 3.095     | 1389 | 88  | 80          | 36.3 |
| 89505         | 10.00          | 254   | 11.00       | 279.4 | 3.487     | 1565 | 99  | 83          | 37.6 |
| 89506         | 11.00          | 279.4 | 12.00       | 304.8 | 3.886     | 1744 | 110 | 86          | 39   |
| 89507         | 12.00          | 304.8 | 13.00       | 330.2 | 4.289     | 1925 | 121 | 90          | 40.8 |
| 89508         | 13.00          | 330.2 | 14.00       | 355.6 | 4.692     | 2106 | 126 | 93          | 42.2 |
| 89509         | 14.00          | 355.6 | 15.00       | 381   | 5.102     | 2290 | 133 | 96          | 43.5 |
| 89510         | 15.00          | 381   | 16.00       | 406.4 | 5.512     | 2474 | 156 | 99          | 44.9 |
| 89511         | 16.00          | 406.4 | 17.00       | 431.8 | 5.924     | 2659 | 168 | 103         | 46.7 |
| 89512         | 17.00          | 431.8 | 18.00       | 457.2 | 6.341     | 2846 | 180 | 106         | 48   |

\*Regularly furnished unless otherwise specified.

⌚ This symbol denotes a product that is engineered to reduce installation and rework time.

For additional product information, please visit [www.zurn.com](http://www.zurn.com)  
Patent [zurn.com/patents](http://zurn.com/patents)

## Z898 18" WIDE TRENCH DRAIN SYSTEM



Standard length: 60"  
Standard grate: FS

### ENGINEERING SPECIFICATION

18" Wide Pre-Sloped Trench Drainage System with 1/8" per foot slope. #12 Gage Type 304 Stainless Steel drain channel with bolted flanged connection complete with rubber neoprene flange gasket and stamped stainless steel grate.

| PREFIX                            | DESCRIPTION   | CHANNEL NUMBER      | LIST PRICE/FOOT |
|-----------------------------------|---|---------------------|-----------------|
| Z*                                | #12 Gage Type 304 Stainless Steel Trench              | 89801 through 89806 | 1,564.00        |
| Z*                                | #12 Gage Type 304 Stainless Steel Trench              | 89807 through 89820 | 1,814.00        |
| ENDCAP/OUTLET OPTIONS             |   |                     | ADD/EACH        |
| Endcaps/Outlet                    |   |                     | 726.00          |
| GRATE OPTIONS - NO STANDARD GRATE |   |                     | ADD/FOOT        |
| -RFS                              | Reinforced Stainless Steel Slotted Grate - Class A    |                     | 1,934.00        |
| -RPS                              | Reinforced Stainless Steel Perforated Grate - Class A |                     | 1,624.00        |
| -SBG                              | Stainless Steel Bar Grate - Class A                   |                     | 1,901.00        |
| -GG                               | Fiberglass Grate - Class A                            |                     | 171.00          |
| MISCELLANEOUS OPTIONS             |   |                     | ADD/FOOT        |
| -K                                | Anchor Flange   |                     | 196.00          |
| -KC                               | Clamp Collar and Pan with Weep Holes                  |                     | 296.00          |
| -VP                               | Vandal-Proof Center Lockdown                          |                     | 15.00           |
|                                   |   |                     | ADD/EACH        |
| -DB                               | Bottom Drop-In Bucket                                 |                     | 422.00          |
| SERVICE CHARGES                   |   |                     | ADD/EACH        |
| Fabrication - 45°; 90°; Tee Fabs  |   |                     | 4,976.00        |
| - Cross Fabs                      |   |                     | 9,947.00        |

| Trench Number | Overall Depth |     |        |     | Max. Flow Rate |      |       | Approx. Wt. (Less Grates) |    |
|---------------|---------------|-----|--------|-----|----------------|------|-------|---------------------------|----|
|               | A Min.        |     | B Max. |     | CFS            | GPM  | LPS   | lb                        | Kg |
|               | In.           | mm  | In.    | mm  |                |      |       |                           |    |
| 89801         | 6.00          | 152 | 6.63   | 168 | 1.43           | 640  | 2423  | 60                        | 27 |
| 89802         | 6.63          | 168 | 7.25   | 184 | 1.79           | 805  | 3047  | 62                        | 28 |
| 89802N        | 7.25          | 184 | 7.25   | 184 | -              | -    | -     | 64                        | 29 |
| 89803         | 7.25          | 184 | 7.88   | 200 | 2.19           | 982  | 3717  | 65                        | 29 |
| 89804         | 7.88          | 200 | 8.50   | 216 | 2.60           | 1167 | 4418  | 67                        | 30 |
| 89804N        | 8.50          | 216 | 8.50   | 216 | -              | -    | -     | 68                        | 31 |
| 89805         | 8.50          | 216 | 9.13   | 232 | 3.03           | 1361 | 5152  | 69                        | 31 |
| 89806         | 9.13          | 232 | 9.75   | 248 | 3.48           | 1562 | 5913  | 72                        | 33 |
| 89806N        | 9.75          | 248 | 9.75   | 248 | -              | -    | -     | 73                        | 33 |
| 89807         | 9.75          | 248 | 10.38  | 264 | 3.94           | 1769 | 6696  | 74                        | 34 |
| 89808         | 10.38         | 264 | 11.00  | 279 | 4.42           | 1982 | 7503  | 76                        | 34 |
| 89808N        | 11.00         | 279 | 11.00  | 279 | -              | -    | -     | 77                        | 35 |
| 89809         | 11.00         | 279 | 11.63  | 295 | 4.90           | 2200 | 8328  | 78                        | 35 |
| 89810         | 11.63         | 295 | 12.25  | 311 | 5.40           | 2423 | 9172  | 81                        | 37 |
| 89810N        | 12.25         | 311 | 12.25  | 311 | -              | -    | -     | 82                        | 37 |
| 89811         | 12.25         | 311 | 12.88  | 327 | 5.91           | 2651 | 10035 | 83                        | 38 |
| 89812         | 12.88         | 327 | 13.50  | 343 | 6.42           | 2882 | 10910 | 85                        | 39 |
| 89812N        | 13.50         | 343 | 13.50  | 343 | -              | -    | -     | 86                        | 39 |
| 89813         | 13.50         | 343 | 14.13  | 359 | 6.95           | 3117 | 11799 | 88                        | 40 |
| 89814         | 14.13         | 359 | 14.75  | 375 | 7.48           | 3356 | 12704 | 90                        | 41 |
| 89814N        | 14.75         | 375 | 14.75  | 375 | -              | -    | -     | 91                        | 41 |
| 89815         | 14.75         | 375 | 15.38  | 391 | 8.02           | 3597 | 13616 | 92                        | 42 |
| 89816         | 15.38         | 391 | 16.00  | 406 | 8.56           | 3841 | 14544 | 95                        | 43 |
| 89816N        | 16.00         | 406 | 16.00  | 406 | -              | -    | -     | 96                        | 44 |
| 89817         | 16.00         | 406 | 16.63  | 422 | 9.11           | 4089 | 15479 | 97                        | 44 |
| 89818         | 16.63         | 422 | 17.25  | 438 | 9.67           | 4338 | 16421 | 99                        | 45 |
| 89818N        | 17.25         | 438 | 17.25  | 438 | -              | -    | -     | 100                       | 45 |
| 89819         | 17.25         | 438 | 17.88  | 454 | 10.23          | 4590 | 17375 | 102                       | 46 |
| 89820         | 17.88         | 454 | 18.50  | 470 | 10.79          | 4844 | 18337 | 104                       | 47 |

## Z897 STAINLESS STEEL CATCH BASIN



Standard Grate Included: FS or PS

### ENGINEERING SPECIFICATION

Catch Basins shall be 6" wide x 20" long x 24" deep, 12" wide x 24" long x 24" deep, or 24" wide x 24" long x 24" deep and shall be made of #16- or #12-gauge 304 stainless steel. Choices of class A thru E grates shall be available with H-20, FAA, and/or ADA compliance. Outlets in 2", 3", 4", 6", and 8" diameters shall be available. Catch Basin shall be Flo-Thru model Z897.

### NOTES

Type 316 Stainless Steel trench is available upon request. Please contact customer care for pricing and lead time.

Please contact customer care for mechanical lockdown availability and pricing.

| PREFIX | DESCRIPTION                 | NOMINAL SIZE | APPROX WT. LBS. (LESS GRATES) | STANDARD PRICE |
|--------|-----------------------------|--------------|-------------------------------|----------------|
| Z*     | Stainless Steel Catch Basin | 6x20         | 49                            | 2,076.00       |
|        |                             | 12x24        | 67                            | 3,239.00       |
|        |                             | 24x24        | 88                            | 3,988.00       |

### OUTLET OPTIONS

|                |        |
|----------------|--------|
| 2", 3", 4", 6" | 210.00 |
|----------------|--------|

### GRATE OPTIONS

|          |   | 6X20   | 12X24    | 24X24  |
|----------|---|--------|----------|--------|
| -GG      | Fiberglass Grate - Class A  | 144.00 | 281.00   | 420.00 |
| -HPS     | Heel-Proof Stainless Steel Slotted Grate - Class A                                | 460.00 | -        | -      |
| -RFSC    | Reinforced Stainless Steel Slotted Grate - Class C                                | 357.00 | 702.00   | -      |
| -RPSC    | Reinforced Stainless Steel Perforated ADA Grate - Class C                         | 357.00 | 702.00   | -      |
| -RPSRC   | Reinforced Stainless Steel Perforated Reverse Punch Anti-Slip ADA Grate - Class C | 357.00 | 702.00   | -      |
| -SBGE    | Stainless Steel Bar Grate - Class E   | 429.00 | 1,053.00 | -      |
| -SCD     | Stainless Steel Circular Decorative Grate - Class B                               | 460.00 | -        | -      |
| -SDD     | Stainless Steel Diagonal Decorative Grate - Class B                               | 460.00 | -        | -      |
| -SOD     | Stainless Steel Decorative Grate - Class B  | 460.00 | -        | -      |
| -SWGB-AS | Slip-Resistant Stainless Steel Wire Grate - Class B                               | 754.00 | 1,677.00 | -      |

### MADE IN THE U.S.A. (HIGHLIGHTED IN GRAY)

| GRATE OPTIONS |  | 6X20 | 12X24  | 24X24 |
|---------------|--|------|--------|-------|
| -FS           | Fabricated Stainless Steel Slotted Grate - Class A | *    | *      | *     |
| -PS           | Perforated Stainless Steel Grate - Class A         | *    | *      | *     |
| -SBG-L        | Stainless Steel Bar Grate - Class C                | -    | 524.00 | -     |

### MISCELLANEOUS OPTIONS

|                   |                                 |        | ADD/EACH |        |
|-------------------|---------------------------------|--------|----------|--------|
| -K                | Anchor Flange                   | 180.00 | 311.00   | 444.00 |
| -KC               | Clamp Collar and Pan            | 267.00 | 396.00   | 527.00 |
| -P6-DEBRIS-COVER  | Debris Cover                    | N/C    | -        | -      |
| -P12-DEBRIS-COVER | Debris Cover                    | -      | N/C      | -      |
| -VP               | Vandal-Proof Center Lockdown    | 136.00 | 136.00   | 136.00 |
| -YS               | Stainless Steel Sediment Bucket | 378.00 | 546.00   | 917.00 |

\*Regularly furnished unless otherwise specified.

⌚ This symbol denotes a product that is engineered to reduce installation and rework time.

## NOTES

# TECHNICAL INFORMATION

|  |           |
|--|-----------|
| TECHNICAL INFO – STAINLESS STEEL DRAINS BUTT-WELD ENGINEERING DATA | <b>26</b> |
| TECHNICAL INFO – OUTLET PIPE CONNECTIONS                           | <b>27</b> |
| TECHNICAL INFO – TOP LOADING CLASSIFICATION                        | <b>28</b> |
| TECHNICAL INFO – EZ STOP LOCK                                      | <b>29</b> |
| TECHNICAL INFO – BUTTERFLY LOCKING VALVE                           | <b>29</b> |
| GENERAL TERMS AND CONDITIONS                                       | <b>30</b> |

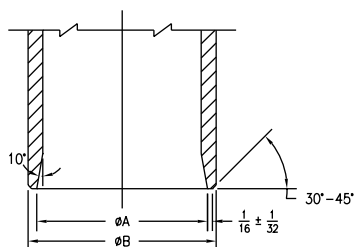
## TECHNICAL INFO – STAINLESS STEEL DRAINS BUTT-WELD ENGINEERING DATA

### Butt-Welding Casting Outlets

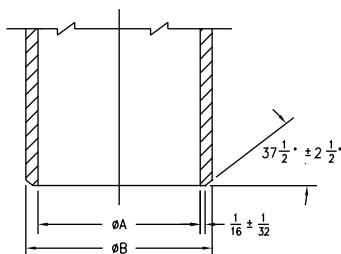
The outlet sections of all cast carbon steel or cast stainless steel products as specified from this brochure shall conform to ANSI-B36.10M-85 and ANSI-B36.19M-85 standards for pipe wall thicknesses for Schedule 10, Schedule 40, or Schedule 80 as specified.

Butt-welding ends of the above mentioned sections shall conform to ANSI B16.25-86 standard for plain welding bevel of  $37\frac{1}{2}^\circ \pm 2\frac{1}{2}^\circ$  and root face (land) of  $\frac{1}{16}'' \pm \frac{1}{32}''$ .

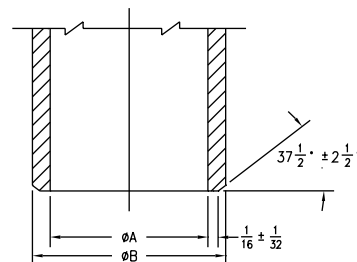
All outlet requirements must be specified and made known to the manufacturer prior to quotation of prices of products applicable to the project.



Schedule 10S Pipe



Schedule 40 Pipe



Schedule 80 Pipe

| SCHEDULE<br>PIPE | DIMENSIONS IN INCHES [MM] |       |        |       |         |       |         |       |         |       |
|------------------|---------------------------|-------|--------|-------|---------|-------|---------|-------|---------|-------|
|                  | PIPE SIZE                 |       |        |       |         |       |         |       |         |       |
|                  | 2 [51]                    |       | 3 [76] |       | 4 [102] |       | 6 [152] |       | 8 [203] |       |
|                  | A                         | B     | A      | B     | A       | B     | A       | B     | A       | B     |
| 10S              | 2.157                     | 2.375 | 3.260  | 3.500 | 4.260   | 4.500 | 6.375   | 6.625 | 8.329   | 8.625 |
| 40               | 2.067                     | 2.375 | 3.068  | 3.500 | 4.026   | 4.500 | 6.065   | 6.625 | 7.981   | 8.625 |
| 80               | 1.939                     | 2.375 | 2.900  | 3.500 | 3.826   | 4.500 | 5.761   | 6.625 | 7.625   | 8.625 |

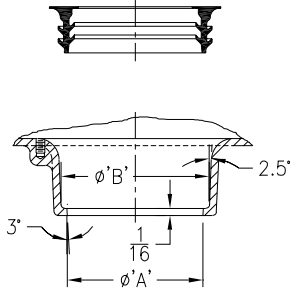
## TECHNICAL INFO – OUTLET PIPE CONNECTIONS

### INSIDE CAULK (IC)

Often specified where drain body is positioned on pipe, bottom of outlet is sealed with oakum and connection is then completed according to local plumbing codes.

### INSIDE GASKET (IG)

The IG connections utilize an inside caulk drain body and a Zurn "Sealtrol" gasket. This connection is only recommended for basement or ground floor applications.

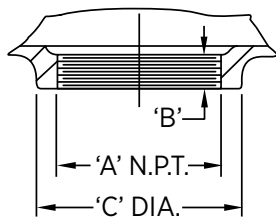


I.C. with Sealtrol Gasket (IG) Inside Caulk (IC)

| OUTLETS              | 'A'         | 'B'          | 'C' |
|----------------------|-------------|--------------|-----|
| 2. [51] I.C. Outlet  | 2-5/8 [67]  | 3-1/16 [78]  | -   |
| 3. [76] I.C. Outlet  | 3-3/4 [95]  | 4-3/16 [106] | -   |
| 4. [102] I.C. Outlet | 4-3/4 [121] | 5-3/16 [132] | -   |
| 5. [127] I.C. Outlet | 5-3/4 [146] | 6-3/16 [157] | -   |
| 6. [152] I.C. Outlet | 6-3/4 [172] | 7-3/16 [183] | -   |
| 8. [203] I.C. Outlet | 8-7/8 [226] | 9-1/2 [241]  | -   |

### IRON PIPE (IP)

Zurn Iron Pipe Threaded connection is an old industry standard. The female (NPT) threaded outlet is often specified on industrial and institutional applications.

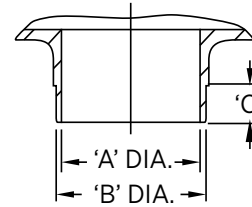


I.P. (Threaded/N.P.T.)

| OUTLETS                | 'A'     | 'B'        | 'C'           |
|------------------------|---------|------------|---------------|
| 2. [51] N.P.T. Outlet  | 2 [51]  | 9/16 [14]  | 3-1/4 [83]    |
| 3. [76] N.P.T. Outlet  | 3 [76]  | 3/4 [19]   | 4-1/2 [114]   |
| 4. [102] N.P.T. Outlet | 4 [102] | 15/16 [24] | 5-5/8 [143]   |
| 5. [127] N.P.T. Outlet | 5 [127] | 15/16 [24] | 6-11/16 [170] |
| 6. [152] N.P.T. Outlet | 6 [152] | 1 [25]     | 7-3/4 [197]   |
| 8. [203] N.P.T. Outlet | 8 [203] | 1-1/8 [29] | 9-3/8 [238]   |

### NO-HUB (NH)

The most widely used connection. A No-Hub connection is achieved by butting No-Hub soil pipe or plastic pipe to the bottom of drain and securing it with a NH joint clamp. (Clamp furnished by others.)



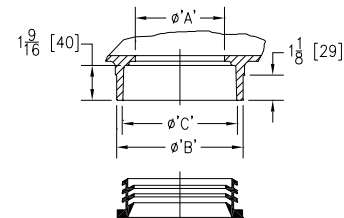
No-Hub (NH)

| OUTLETS                 | 'A'           | 'B'           | 'C'         |
|-------------------------|---------------|---------------|-------------|
| 2. [51] No-Hub Outlet   | 2 [51]        | 2-3/8 [60]    | 1-9/16 [40] |
| 3. [76] No-Hub Outlet   | 3 [76]        | 3-3/8 [86]    | 1-9/16 [40] |
| 4. [102] No-Hub Outlet  | 4 [102]       | 4-3/8 [111]   | 1-9/16 [40] |
| 5. [127] No-Hub Outlet  | 4-15/16 [126] | 5-5/16 [135]  | 2-1/16 [52] |
| 6. [152] No-Hub Outlet  | 5-15/16 [151] | 6-5/16 [160]  | 2-1/16 [52] |
| 8. [203] No-Hub Outlet  | 8 [203]       | 8-3/8 [213]   | 2-1/16 [52] |
| 10. [254] No-Hub Outlet | 10 [254]      | 10-9/16 [268] | 2-1/16 [52] |
| 12. [305] No-Hub Outlet | 12 [305]      | 12-9/16 [319] | 2-1/16 [52] |

### NEO-LOC (NL)

Zurn Neo-Loc is a unique labor-saving compression gasketed connection designed to simply push on the stub end of the pipe. The Neo-Loc drain body and gasket can be utilized with plastic, steel, No-Hub and service weight soil pipe. A unique pipe stop cast in each Zurn Neo-Loc drain body ensures a proper fit.

**Note:** Not recommended for roof drain applications due to the watertight integrity of the Neo-Loc connection to the leader pipe being dependent upon adequate leader pipe support and accurate perpendicularity of leader pipe into Neo-Loc gasket.



"Neo-Loc" (NL)

| OUTLETS                 | 'A'     | 'B'         | 'C'         |
|-------------------------|---------|-------------|-------------|
| 2. [51] Neo-Loc Outlet  | 2 [51]  | 3-3/8 [86]  | 3 [76]      |
| 3. [76] Neo-Loc Outlet  | 3 [76]  | 4-3/8 [111] | 4 [102]     |
| 4. [102] Neo-Loc Outlet | 4 [102] | 5-1/2 [140] | 5-1/8 [130] |
| 2. [51] NL w/-TC        | 2 [51]  | 3-3/8 [86]  | 3 [76]      |
| 3. [76] NL w/-TC        | 3 [76]  | 4-3/8 [111] | 4 [102]     |
| 4. [102] NL w/-TC       | 4 [102] | 5-1/2 [140] | 5-1/8 [130] |

**Special Note:** Zurn "Neo-Loc" and "Sealtrol" gaskets are designed for use exclusively with Zurn drainage products. They are not sold separately and all warranties either expressed or implied would be forfeited if used in other than a Zurn drainage product.

## TECHNICAL INFO – TOP LOADING CLASSIFICATION

Selection of a Zurn Floor Drain should be based on the load factor and the anticipated traffic. Many of Zurn's cast iron grates may be furnished in Duresist iron when increased working load requirements are necessary. Specify Duresist grate (-DG) when required or contact your Zurn representative when special applications are necessary.

Zurn drains are rated as follows: (Reference ASME Standard A112.6.3M)

### 6.1 – LOADING CLASSIFICATIONS

Grates and top rims shall be designed to meet the following loading classifications.

#### 6.1.1 – LIGHT DUTY

All grates having safe live load (as calculated in para. 6.2.5) under 2000 lb. [900 kg].

#### 6.1.2 – MEDIUM DUTY

All grates having safe live load (as calculated in para. 6.2.5) between 2000 lb. [900 kg] and 4999 lb. [2250 kg].

#### 6.1.3 – HEAVY DUTY

All grates having safe live load (as calculated in para. 6.2.5) between 5000 lb. [2250 kg] and 7499 lb. [3375 kg].

#### 6.1.4 – EXTRA HEAVY DUTY

All grates having safe live load (as calculated in para. 6.2.5) between 7500 lb. [3375 kg] and 10,000 lb. [4500 kg].

#### 6.1.5 – SPECIAL DUTY

Grates having safe live load (as calculated in para. 6.2.5) over 10,000 lb. [4500 kg] shall be considered special and treated accordingly.

### 6.2 – TEST PROCEDURE FOR GRATE LOADING

Live Load – Requirements listed in 6.1 through 6.1.5 shall be determined as follows:

\*Safe live load rating of grates is for general classification purposes only.

For the actual safe live load of any given grate, contact your Zurn representative.

Note: ZB and ZN 400 Series drain head assemblies are rated for light-duty applications only.

### 6.2.1 – LOAD CLASSIFICATIONS

Load classifications as stated in 6.1 shall be determined by laboratory tests.

#### 6.2.2 – PLATEN SIZE

A 3.5 in. [89 mm] diameter platen shall be applied to the center of the grate specimen.

#### 6.2.3 – LOADING

Loading shall be applied slowly so that point of failure can be observed.

#### 6.2.4 – POINT OF FAILURE

(a) Brittle Materials (Cast Iron). The load (in pounds or kilograms) at which the first fracture on any part of the specimen appears.

(b) Ductile Material. The load which the permanent set (at the point of loading) is greater than 2% of the longest transverse dimension of the specimen.

#### 6.2.5 – GRATE CLASSIFICATION

The maximum safe live load is computed by dividing the load at failure by two.

## TECHNICAL INFO – EZ STOP LOCK

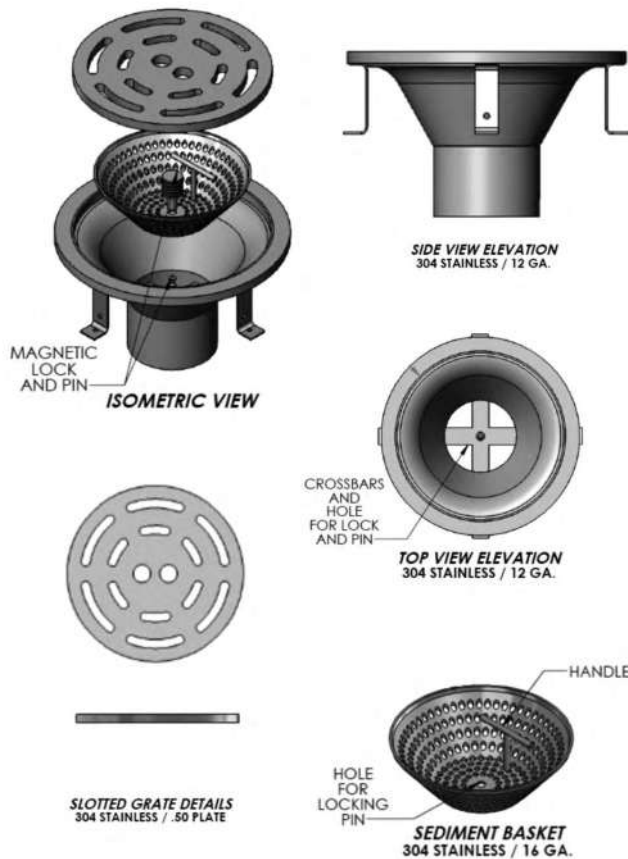
### A SOLUTION FOR EXISTING DRAINS

Prevent damage and protect your plumbing system with the EZ Stop Lock and stainless steel inserts.

The EZ Stop Lock, with its use of a magnetic lock, is a tested solution developed to prevent unauthorized access to trunk lines, protecting your drainage system from negligence and improper disposal of

trash and debris. This solution can be added to any of our existing area drains or floor drains.

The EZ Stop Lock can be fitted to any Zurn stainless drain and our stainless steel inserts can be fitted to existing floor and area drains.

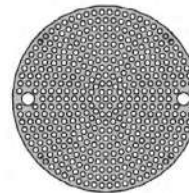


S05 - 12.0 X 10.0 ID X 7.0 ROUND SANITARY AREA DRAIN

### STAINLESS STEEL DRAIN INSERTS

Stainless steel inserts, made from 304 or 316 stainless, can be added to any existing floor or area drain to add an additional layer of protection for your plumbing system. Much like the EZ-Stop-Lock, the inserts are secured with the use of a magnetic lock. Available in round and square perforated screens.

SDS - 9.0 X .135  
PERFORATED SCREEN INSERT



TOP VIEW ELEVATION  
304 STAINLESS / 10 GA.

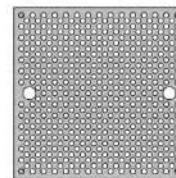


SIDE VIEW ELEVATION  
304 STAINLESS / 10 GA.



(2) LOCK & PIN  
304 STAINLESS

SDS - 8.25 X 8.25 X .135  
PERFORATED SCREEN INSERT



TOP VIEW ELEVATION  
304 STAINLESS / 10 GA.



SIDE VIEW ELEVATION  
304 STAINLESS / 10 GA.



(2) LOCK & PIN  
304 STAINLESS

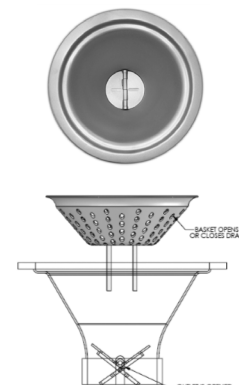
## TECHNICAL INFO – BUTTERFLY LOCKING VALVE

Zurn offers a patent pending Butterfly Locking Valve (BLV) to protect your pipes and trunk lines against debris. This stainless steel basket strainer system discourages improper waste disposal by simply closing off the drain when the sediment basket is removed by maintenance crews. This drain option can be a valuable tool by helping to prevent clogged drain systems, as well as reducing the potential for unexpected maintenance costs.

### ENGINEERING SPECIFICATIONS

#### STANDARD OPTIONS

304 or 316 Stainless Steel  
Schedule 40 Outlet  
Outlet Sizes: 4" only



## NOTES



## NOTES

For terms and conditions, please visit [zurn.com/terms](https://www.zurn.com/terms)

Zurn is not responsible for typographical errors. The contents of this guide are subject to revision without notice.

© 2025 Zurn Water, LLC Items in this guide may be covered by U.S. and foreign Patents and Patents Pending. Registered Trademarks.

