

# present launches Erie Test Lab

Grand Opening April 25

Roof Drain Test Stand





## how it works step-by-step

- 1 ● complete and ready to install
- 2 ● post pour adjustment
- 3 ● tilt feature set - built in



**1:44 Video:**  
[Zurn Floor Drains EZ1 – It's About Time](#)

# EZ1 plastic product line

## nomenclature

- EZ-PV2 (PVC body material)
- ZN415-3NH-5BZ1



## Introducing the Plastic EZ1™ Nomenclature Decoder



**SHIM KIT**  
Shims built into the rough-in cover for IIR adjustment, screws included.

**ROUGH-IN COVER**  
Designed to stand up to rigorous jobsites with 3,000 lb load rating.

**PROTECTIVE LABEL**  
Keeps grate/cover finish intact until the job is complete.

**COVER OPTIONS**  
**EZ1-R6** = Round 6" Top  
**EZ1-S6** = Square 6" Top  
**EZ1-R6** = Round 6" Top  
**EZ1-S6** = Square 6" Top  
**EZ1-S5** = Square 5" Top  
**EZ1-S5** = Square 5" Top

**BODY OPTIONS**  
**PV** = PVC Body Material  
**AB** = ABS Body Material

**OUTLET SIZES**  
**2"** = 2"x3" outlet  
**3"** = 3"x4" outlet  
**4"** = 4" outlet

### A Whole Family of Product

**EZ** = Slab on grade adjustable drain  
**EZ1** = Floor drain with clamping collar  
**EZ2** = Floor drain with deck plate  
**FD2** = Floor drain with deck plate and no post-pour adjustment

### Model Number Example

**[EZ]-[PV][2]-[R][6]-[SS]**  
**EZ** = Denotes post-pour adjustability  
**PV** = Outlet material  
**2** = Denotes outlet size  
**R** = Cover type (round or square)  
**6** = Cover size  
**SS** = Cover material\*

\*Comes standard with 5" nickel bronze cover unless otherwise noted.

ZURN INDUSTRIES, LLC Commercial Drainage Operation, 1801 Pittsburgh Avenue, Erie, PA 16502, 855.651.9876  
Form No. ZIB-029-2, 5/18

Learn more at [zurn.com/ez1](http://zurn.com/ez1)  
US 1/01/2018, ZURN CANADA 1/01/2018 ZURN.COM

# past launches marketing

## PHIX case study, brochure, sell sheet

CHEMICAL DRAINAGE



### PHIX® Acid Neutralization Cartridge

Makes the grade in safety, savings, and ease of use

Don't experiment when it comes to neutralizing acidic wastewater inside your school's laboratories. Our PHIX cartridge is a safe and effective solution for your classroom and our shared environment. It neutralizes acid at the source, fits conveniently under the sink, and takes minimal steps to clean up.

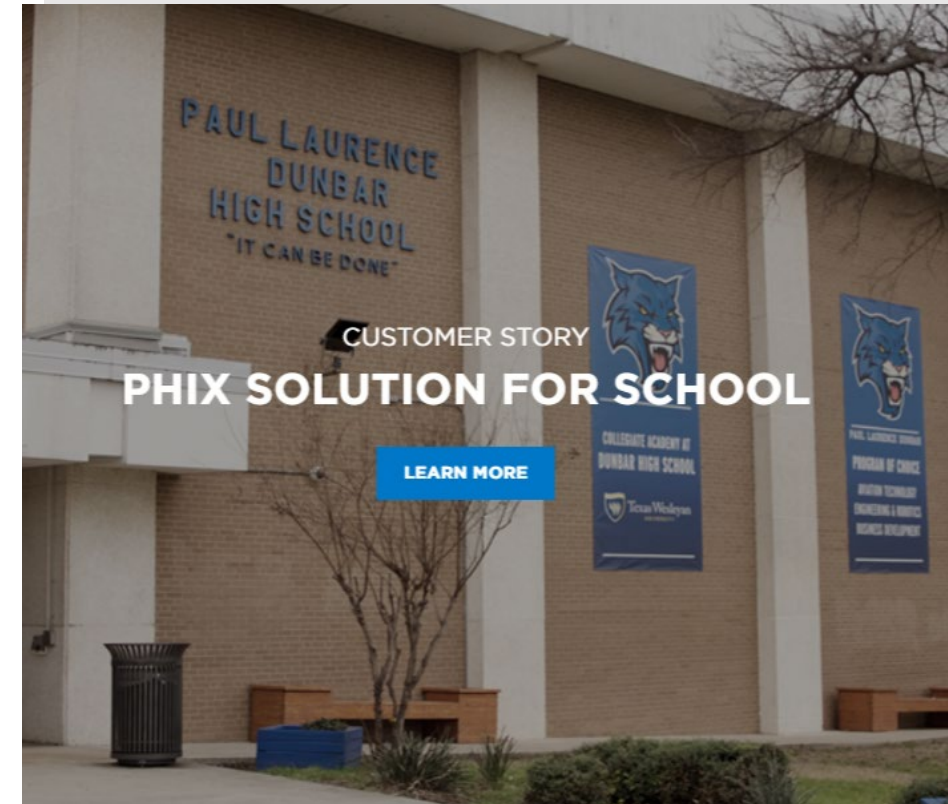
**Below the sink neutralization.**  
**Above average system.**

The media comes standard with a solids filter. It installs and replaces easily for maintenance staff and plumbing professionals. We recommend checking over summer and winter breaks. You'll also know it's time to replace when the drain slows.

PHIX cartridge is an environmentally sound and cost-effective choice too. It does require a separate handwashing sink. You should also note, soap will decrease the life of the media. If maintained properly, the system lasts longer without as many cleaning steps or risk of cross-contamination.

#### Features and Benefits

- 5 times more efficient for less maintenance
- Lasts up to 30 times longer than limestone
- Compact design for retrofit applications
- Durable glass-filled, polypropylene construction extends life
- Backed by an industry-leading 10-year warranty
- Does not require special piping, equipment, storage or handling
- Tested to NSF International



# present launches marketing

## PHIX

<https://www.zurn.com/about/customer-stories/fort-worth-isd>  
The master plumbing team at Fort Worth ISD had a large lab renovation to plan. After weighing the different neutralization options, the team selected a system that could actually do more for less. James Cohen and David Smith discuss how the Zurn PHIX cartridge neutralizes acids from the point of use, while also saving space, time, and money.



# features & benefits

## bi-functional roof drains

### Froet roof drains

- Designed like no other roof drain
- The industry's original patented bi-functional roof drain and drain with vent

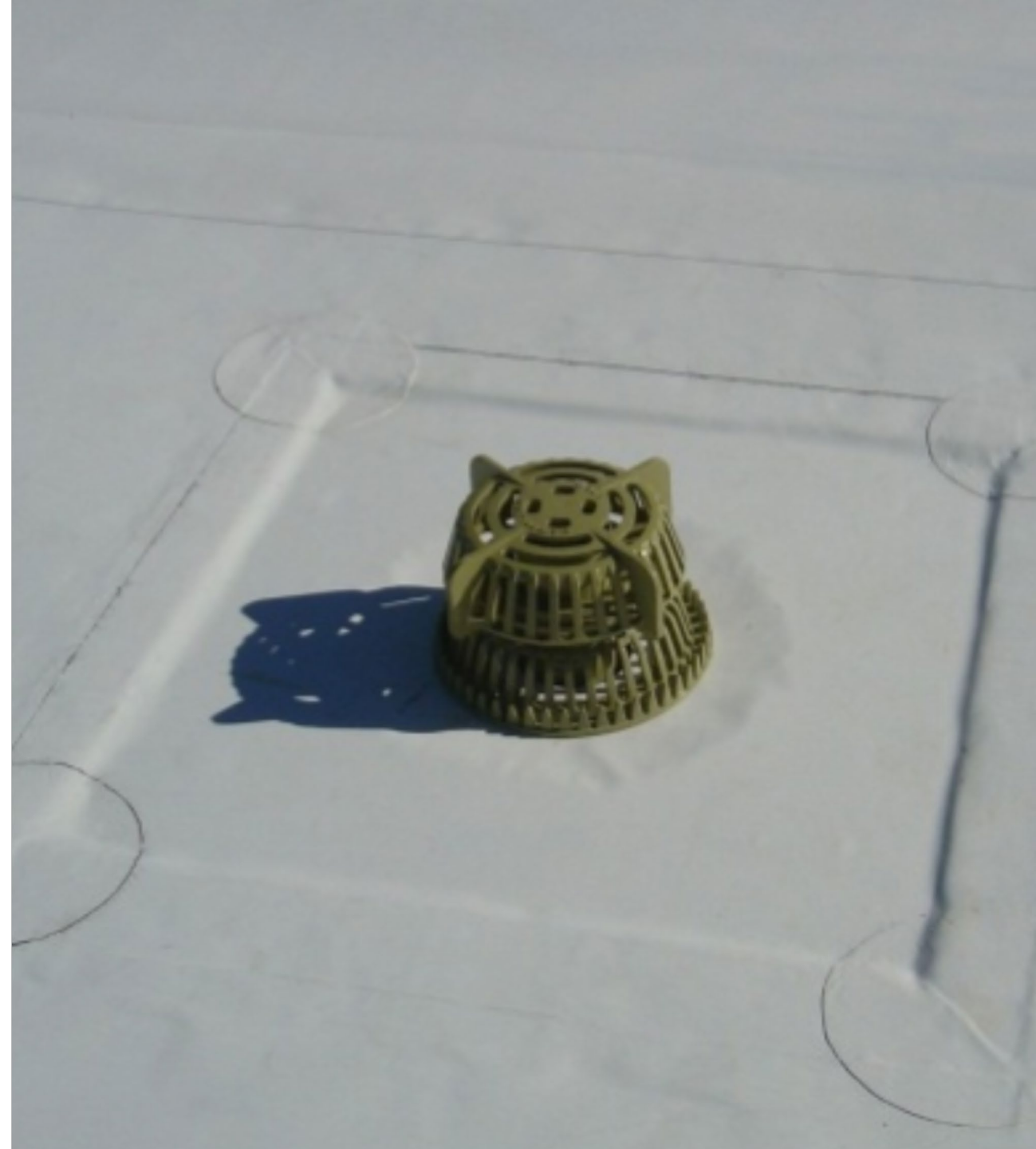


# features & benefits

## bi-functional roof drains

### Froet roof drains

- Cast iron
- Fully cast one piece sump
- Powder coated finish
- Labor savings
- Roof penetration reduction
- Roof drainage simplified
- Most stoutly built roof drain on the market
- UPC and IPC Listed



# features & benefits

## bi-functional roof drains

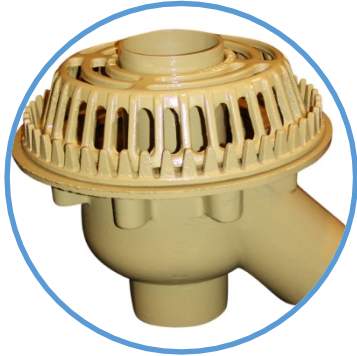
### superior quality

- Cast iron construction for all parts (no plastic)
- Powder coat finish exceeds the industry standard
- Superior quality will provide decades of service



# top SKU's nomenclature

## Bi-Functional Drain



- 100 => Bi-functional Drain
- C => Cast Iron
- X => NH Outlet (2"-8")

### Examples

- 100C3
- 100C4
- 100C6

## Dome Options



- LP => Low Profile Dome
- ULP => Ultra Low Profile Dome
- OFS => Overflow Strainer

### Examples

- 100C4LP
- 100C4-OFS

## Installation Options



- DP => Drain Pan (Deck Plate)
- GRBA => Green Roof Box

ULP	Ultra Low Profile	OFSL	Overflow Strainer Low Profile
LP	Low Profile	ER 1.5	Elevation Ring for 1-1/2" Insulation
DC	Deck Clamp	ER 2	Elevation Ring for 2" Insulation
ADC	Alternate Deck Clamp	IG	IRMA Roof Guard
DP	Drain Pan	DEX-2	2" Ring Extension
SP	Sump Drain Pan	DEX-4	4" Ring Extension
DMP	Deck Mounting Plate	DEX-6	6" Ring Extension
FR	Finishing Ring	CFW	Control Flow Weir
OFS	Overflow Strainer	VP	Vent Pipe

# future collateral spec sheets and part breakdowns



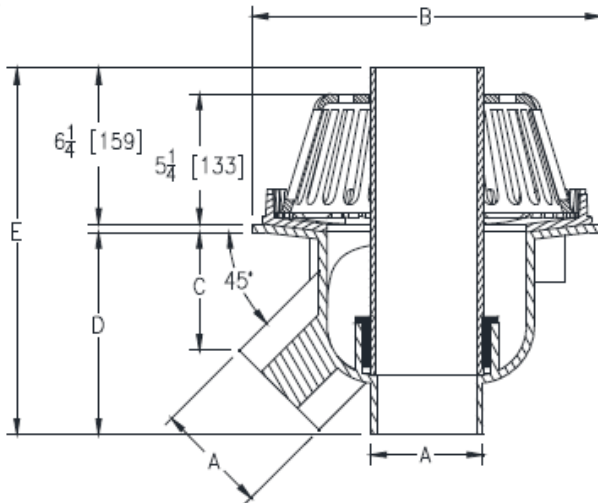
## FROET™ C100

BI-FUNCTIONAL DEEP SUMP DUAL OUTLET ROOF  
DRAIN W/ DOME

SPECIFICATION SHEET

TAG  

Dimensional Data (inches and [ mm ]) are Subject to Manufacturing Tolerances and Change Without Notice



A Pipe Size In. [mm]	B In. [mm]	C In. [mm]	D In. [mm]	E In. [mm]	Approx. Wt. Lbs. [kg]	Dome Open Area Sq. In. [cm²]
2 [51]	10-1/4 [260]	2-13/16 [71]	5 [127]	11-5/8 [295]	21 [8]	48 [310]
3 [76]	14 [356]	4-7/8 [124]	6-7/8 [175]	13-1/2 [343]	47 [21]	90 [581]
4 [102]	14 [356]	4-7/8 [124]	8 [203]	14-5/8 [371]	53 [24]	90 [581]
5 [127]	18 [457]	5-1/2 [30]	10-1/4 [260]	16-7/8 [429]	83 [38]	127 [819]
6 [152]	18 [457]	5-1/2 [30]	11-1/4 [286]	17-7/8 [454]	89 [40]	127 [819]
8 [203]	25 [635]	8-1/4 [210]	13-3/4 [349]	20-3/8 [518]	122 [55]	203 [1310]

**ENGINEERING SPECIFICATION:** ZURN Froet™ 100C Froet™ bi-functional roof drain with 45° primary outlet connection. Powder coated cast iron deep sump body with combination membrane flashing clamp/gravel guard, overflow pipe (2", 3", 4", 5", 6", 8" [51mm, 76mm, 102mm, 127mm, 152mm, 203mm]) with standard 5-1/4" [133] high cast iron dome and 6-1/4" [159mm] high cast iron overflow.

**OPTIONS** (Check/specify appropriate options)

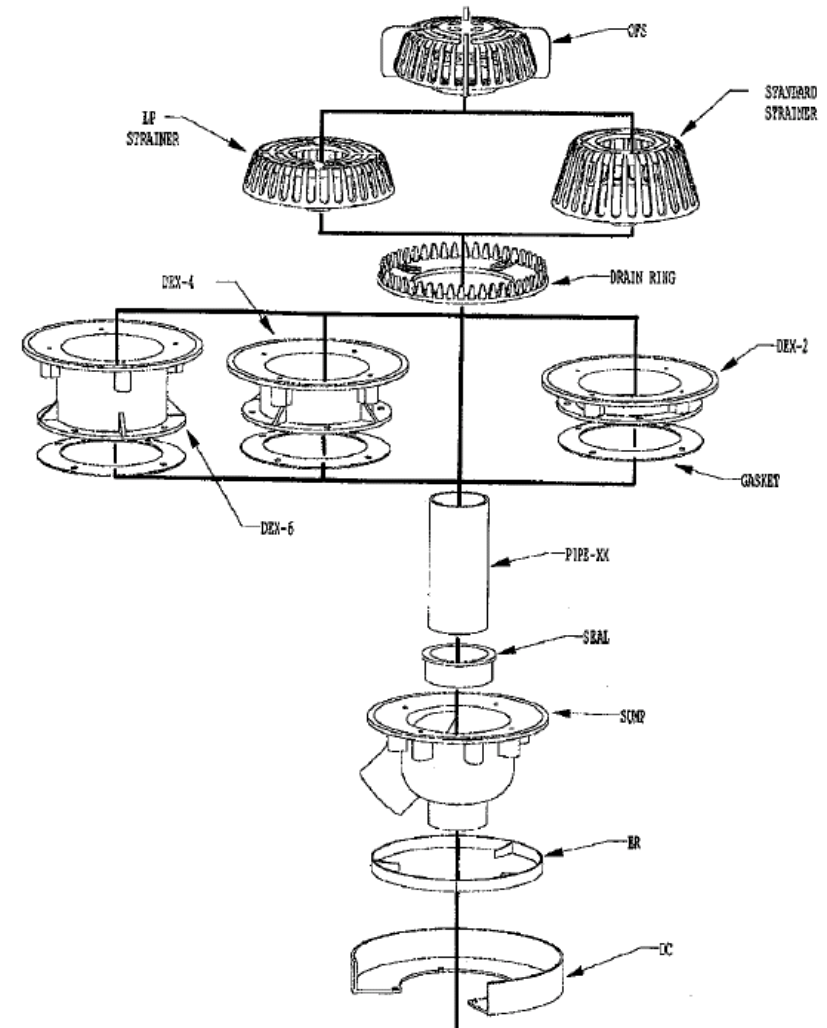
**PIPE SIZE**

2,3,4,5,6,8 [51,76,102,127,152,203]

(Specify size) **OUTLET**

  NH No-Hub

## Part Breakdowns



# Froet roof drains features & benefits

## black box

- Easy job site adjustability
- Fertilizer resistant
- Lower cost than stainless steel
- Many lid options
- Even 10,000 LBS rated lid
- Proven material for subsoil use
- HDPE



# Froet roof drains monitoring

## flow sensors

Do you need to monitor for water and be notified or monitor for water and actuate a valve? If so, then this is your answer.

- Low cost sensor
- 24/7/365 operation and notification when tied to a BMS
- Battery backup to sustain operation during power outage
- Easy customized to your specific needs
- Overflow monitor, rainwater harvesting, backflow preventer relieve valve monitor, water level monitor, etc...
- If you need to sense water and turn valves, this is your low cost option



# integration summary

## value proposition

- ✓ stainless steel product offering
- ✓ Improved lead times
- ✓ complete custom capability



## promotion

- ✓ stainless catalog
- ✓ samples in process to REP's



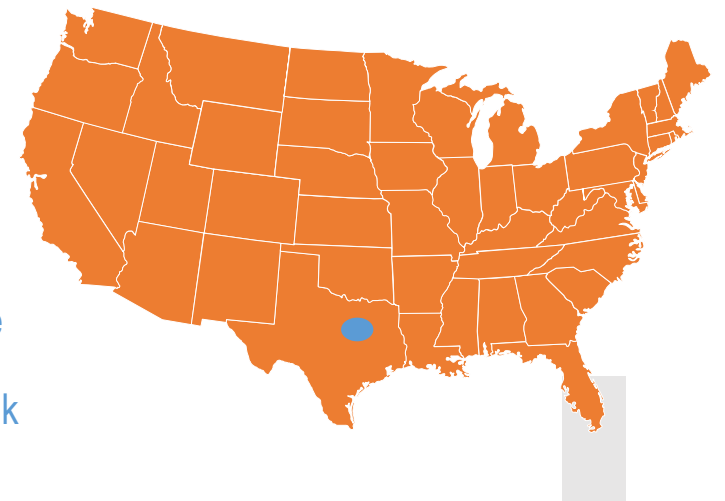
## product

- ✓ sanitary drainage
- ✓ area drainage & cleanouts
- ✓ linear drainage
- ✓ custom



## order / shipment

- ✓ located in Dallas region
- ✓ select SKU's AX09
- ✓ Spec Drain => Dan Hause
- ✓ Linear Drain => Chris Brink



# integration product review

## Sanitary Drainage



Standardize on Stainlessdrains.com  
as new Z1800 products

*Example*  
Z1800-12B

## Area Drainage



6", 8", & 10" sizes

*Example*  
Z1706 – 6" Round

## Floor Sinks



Unique Products  
(i.e. Magnetic Lock & Butterfly Valve)

*Example*  
Z1750-SDC

# stainless products marketing collateral

- Stainless steel addendum available online and shipped next week
- Product pages available on [www.zurn.com](http://www.zurn.com)
- Spec sheets available on [www.zurn.com](http://www.zurn.com)
- Sell sheets and brochure in process, available end of July
- Product samples available for reps (August)
- Videos in production



## Stainless Steel Drains

Customer Guide



ZURN.COM US 1.855.ONE.ZURN CANADA 1.877.892.5216

Effective July 1, 2019  
Replaces All Previous Price Lists

# customers restaurants & kitchens



12" Wide Trench and Perforated Grate in Kitchen



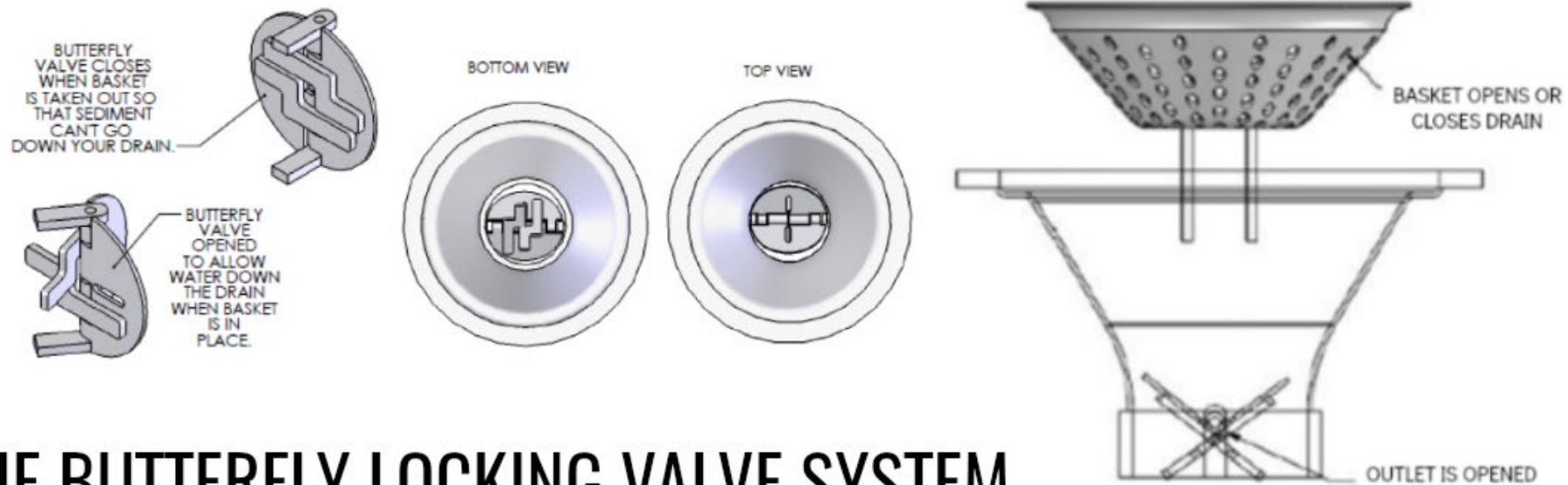
# customers healthcare

SDcSH shower drains installed in patient room showers



# solutions

## first generation



## THE BUTTERFLY LOCKING VALVE SYSTEM

Our patent pending Butterfly Locking Valve System is manufactured to **keep your drains and pipes clear of unwanted debris.**

**The concept is simple; when the sediment basket is removed, the drain is closed off. When the basket is back in place, the butterfly valve opens allowing water down the drain.**

This product offers additional protection for your pipes and trunk lines while the baskets are removed and discourages improper waste disposal. It can be a valuable tool to help prevent clogged drains and reduce the potential for unexpected maintenance costs. Available for 4" or larger outlets.

solutions

## second generation EZ-STOP-LOCK

- Unique locking mechanism to secure your drain components
- Cannot be removed with pliers, wrenches, screw drivers, crowbars, etc.
- Only those with an assigned key can remove secured components
- Simple to operate
- Prevents employees from throwing away sediment baskets or dumping trash, which damages the trunk lines
- Proactively reduce incidents of tampering or damage to your plumbing system
- Reduce unexpected costs & downtime due to unauthorized access and damage to your drainage system, while allowing fast access for routine maintenance tasks

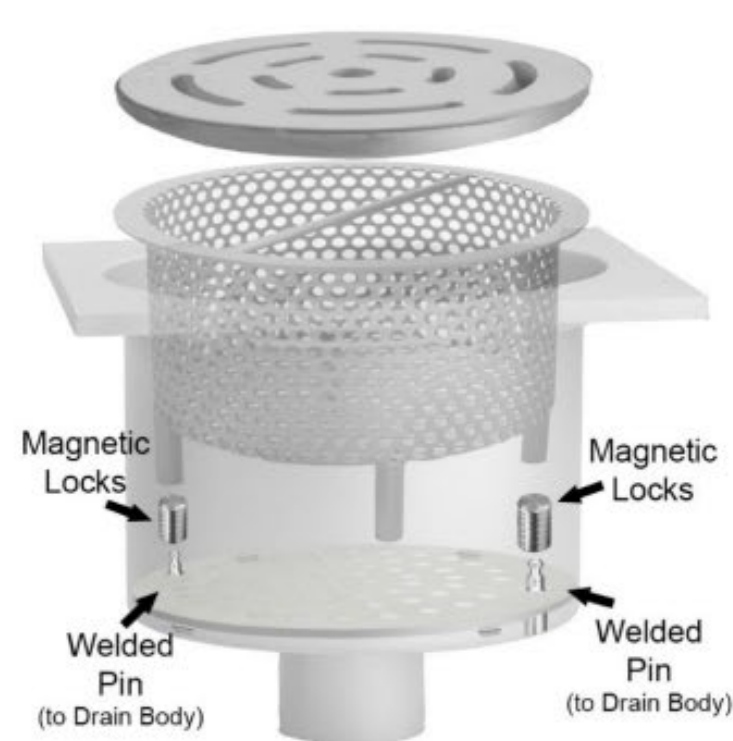


# solutions EZ-STOP-LOCK



## EZ-STOP-LOCK

\*\*THE EZ -STOP-LOCK IS NOT CURRENTLY USED IN COSTCO WAREHOUSES\*\*



# stainless products sanitary design

## ABOUT OUR SANITARY DESIGN WHAT MAKES IT SO SPECIAL?

- High Quality
- Low Cost
- Sanitary Design
- Speed to Market (Standard 10 Days; Faster, on Demand)
- Unique Process
- Highly Customizable



# stainless products

## area drains

Ideal for low to medium flow areas:  
kitchens, restrooms, showers, wet areas, and interior overflow  
applications



### Features:

Area drain is available in 304 or 316 Stainless Steel  
and comes standard with 6" Round Adjustable Top

Perforated Light-Duty 12 Gauge Grate with  
2", 3", 4" Outlet sizes available

Bead Blast Finish (Satin)

14 Gauge Body

*\*Area drains are fully customizable.  
Please contact Zurn customer care for custom applications\**

# stainless products

## double containment sanitary and hub drains

### Double Containment Sanitary Drain

captures condensation case by extreme temps on second floor  
applications used in chemical plants  
and heavy corrosive environments

### Hub Drains

Eccentric or concentric available with baskets and grates

All products meet U.S. FDA Standards and are corrosion resistant.

All products available in SS 304, 304L, 316, 316L. All outlets and fittings available in schedule 10 and 40.



# stainless products grates

Full line of stainless steel grate options

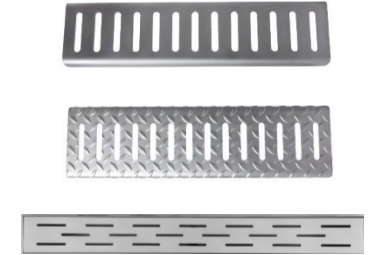
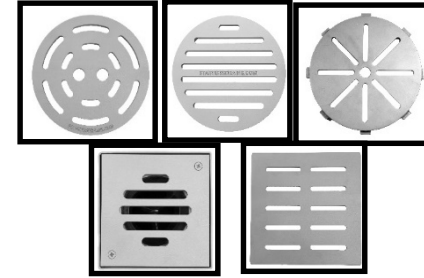
Replacement stainless steel grates for existing drains

Any load class A-F

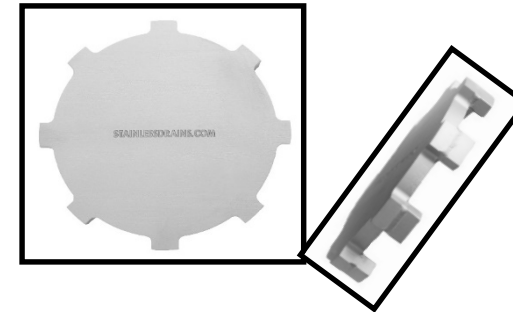
Options include: perforated, bar, subway bar, perimeter gap, slotted, reinforced and custom logo grates



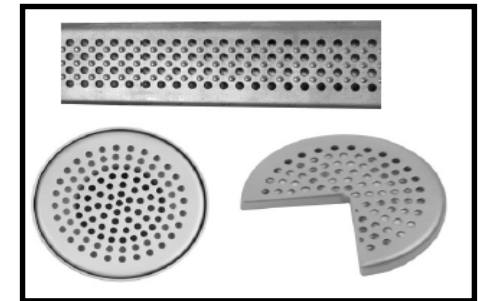
## Slotted Grates



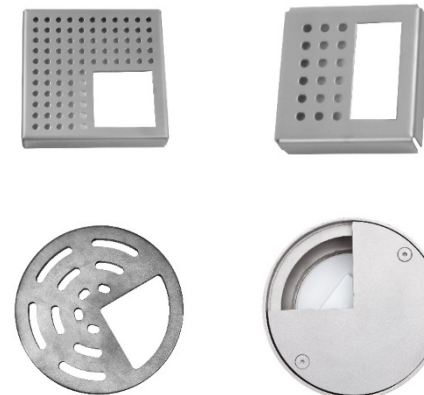
## Perimeter Gap Grates



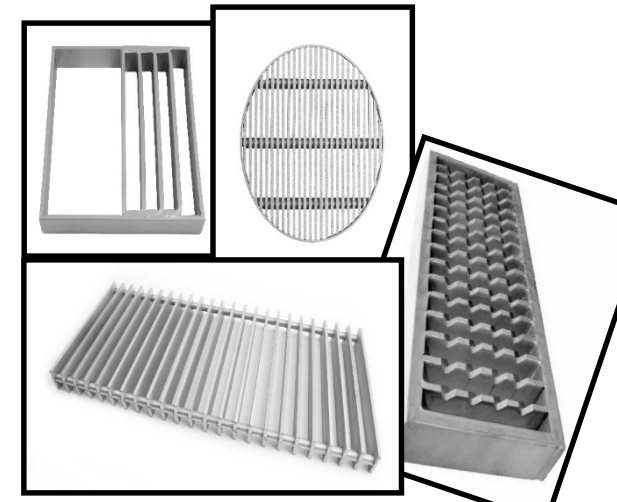
## Perforated Grates



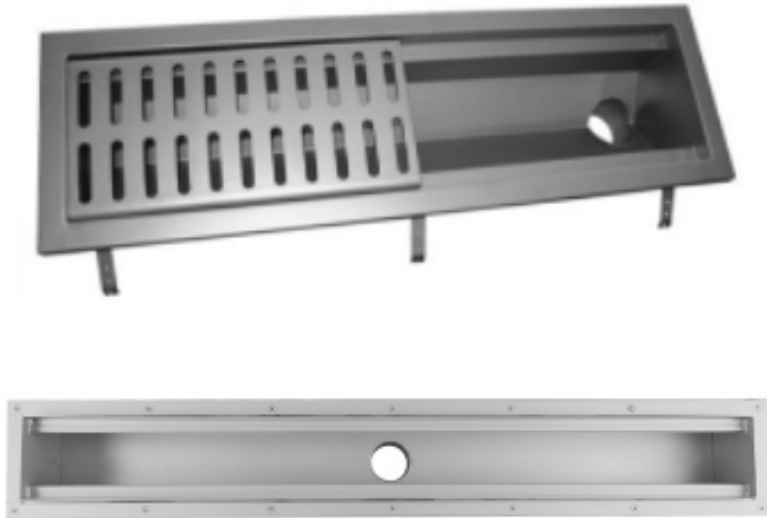
## Half and 3/4 Grates



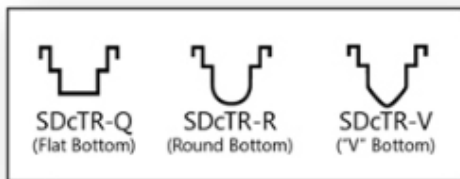
## Bar Grates



# stainless products trench drain systems



## TRENCH BOTTOM SHAPES



5' TRENCH DRAIN



10' TRENCH DRAIN



15' TRENCH DRAIN

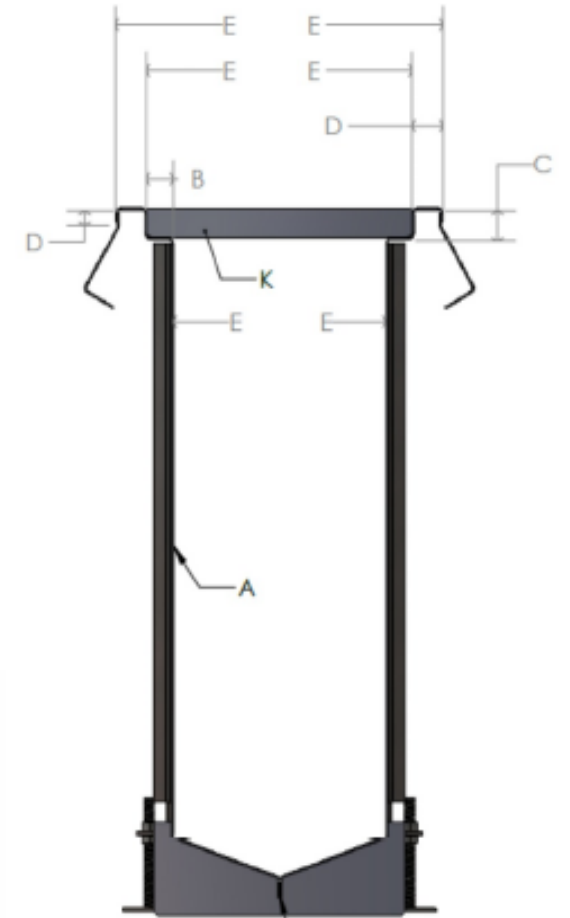
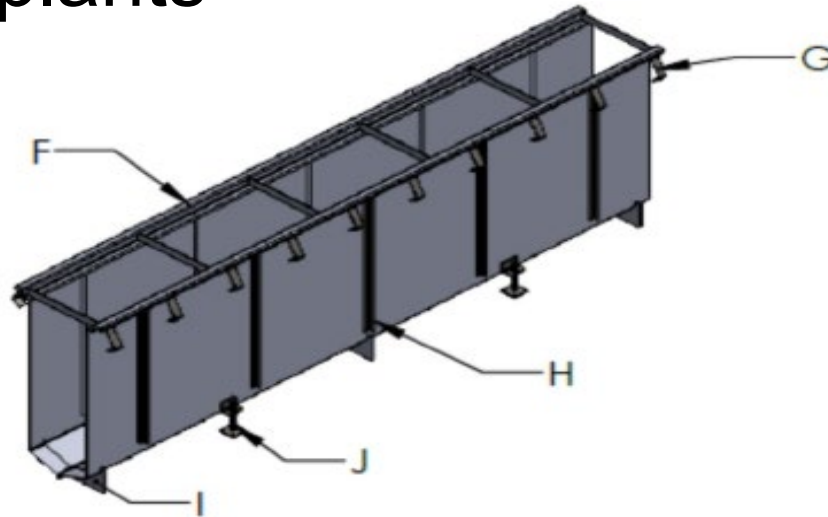


25' TRENCH DRAIN USED IN THE ROTISSERIE AREA

When we first began supplying Costco Warehouses with our drains, we used traditional stainless steel trench drains, but after reviewing problems, we added a catch basin and the Butterfly Locking Valve.

# stainless products

## trench drains for poultry plants



Depth over 21.5"  
Made into two pieces

### PRODUCT SPECIFICATIONS

A-12ga. Body (2B) Mill Finish

B-1.5" Wide Grate Ledge

C-1.5" Grate Height

D-1.75" Top Flange, .75" Return

E-21" Throat, 24" Grate Opening, 27.5" O.D.

F-.1875" Air Relief Holes on 48" Centers @ Top Flange Each Side

G-12ga. Anchor Tabs 4"X2"X1.5" Wide 12 O.C. Each Side with (Three) Rebar Tie-off Grooves

H-12ga. 1"X 1" X varies L-Angle 24" O.C.

I-(Three) .25" Thick SS Plate Cradles at Bottom of Trench Drain to Strengthen/Support/Help Prevent Warping of Material

J-(Four) Adjustable Leg/Feet .25"X 2"X 2" L-Angle SS 304 with 11/16" X 1.25" Slot with .625" X 12" All Thread Rod Welded to .25" X 3" Plate with (Four) .375" Holes for Mounting to Mud Slab. .625" Nuts to be Provided.

K- Temporary 10ga. 304 1.5" X 11" Bearing Bars on 24" Centers in Grate Ledge. Break Out After Pour.



# stainless products

## trench drains for poultry plants



# stainless products

## epoxy ledge

As more construction calls for epoxy floors, our team designed a new epoxy ledge that can be added to any of our stainless steel floor drains. The ledge allows for a seamless floor to drain transition.

### BENEFITS

- Secures the epoxy floor to the drain preventing spalling and cracking of the finished floor
- Creates a seal, helping prevent water leakage around the drain
- Helps prevent bacteria growth around the drain
- Makes the epoxy floor monolithic
- Saves on maintenance cost by helping eliminate future problems
- Ensures a quality finished product



FLOOR SINK



TRENCH DRAIN



ROUND FLOOR SINK



VIEW FROM INSIDE

